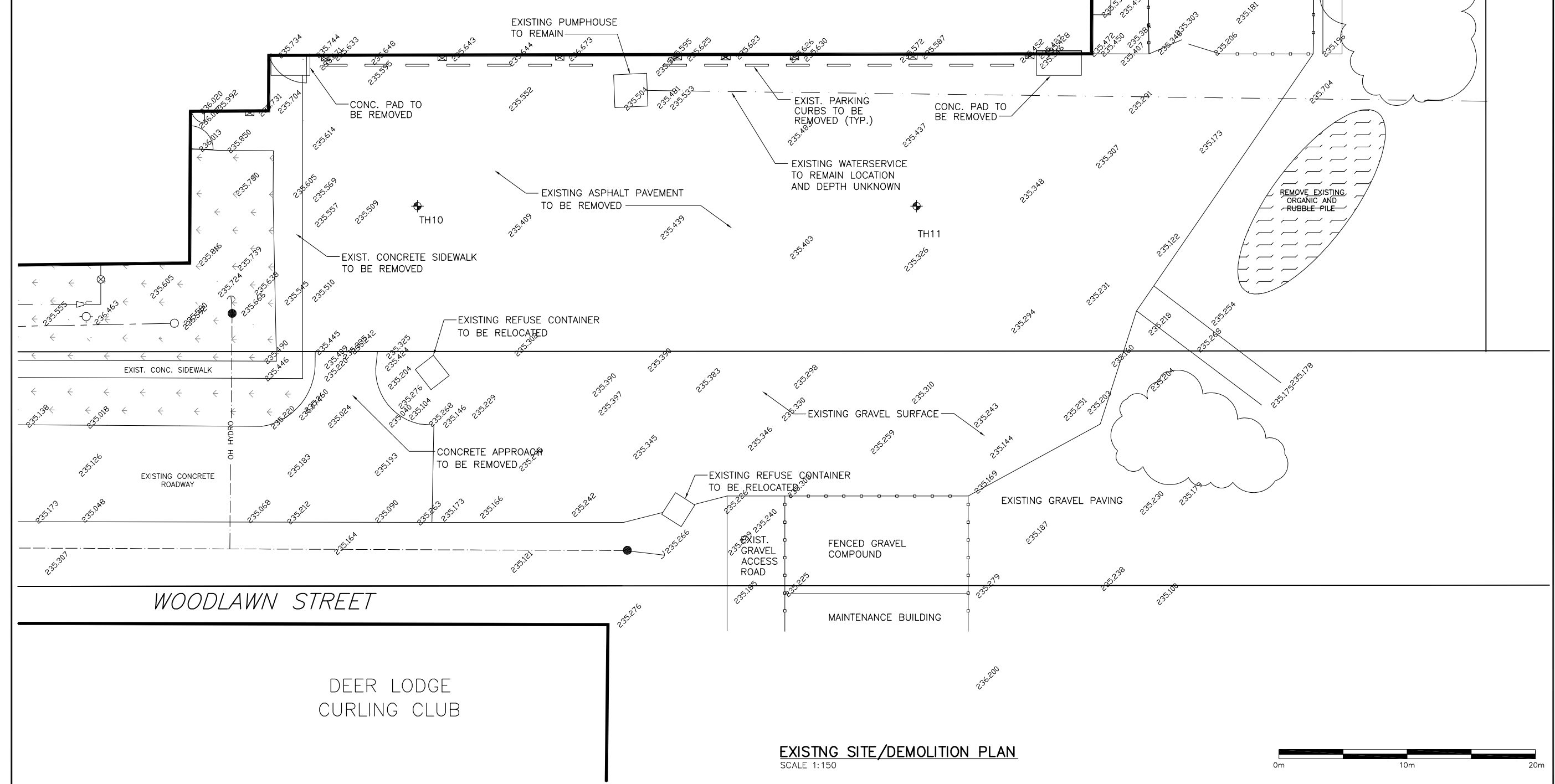
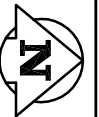
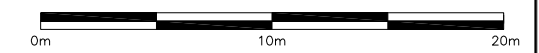


# ST. JAMES CIVIC CENTRE



**EXISTING SITE/DEMOLITION PLAN**  
SCALE 1:150



**METRIC**  
WHOLE NUMBERS INDICATE MILLIMETRES  
DECIMALIZED NUMBERS INDICATE METRES



150 mm WM	WATERMAIN	150 mm WM	HYDRO	150 mm WM	WATERMAIN
+	HYDRANT	+	MTS	+	HYDRANT
+	VALVE	+	CONCRETE	+	VALVE
300 mm LDS	LAND DRAINAGE SEWER	300 mm LDS	LIMIT OF ASPHALT	300 mm LDS	SEWER
250 mm CS	COMBINED SEWER	250 mm CS	CURB RENEWAL	300 mm LDS	300 mm LDS
○	MANHOLE	●	ASPHALT		
□	CATCH BASIN (CB)	■	ELEVATIONS		
△	CATCH PIT (CP)	▲	PROPERTY LINE		
+	SIGN	+	SURVEY BAR		
○	LAMP STANDARD	○	CURB STOP		
○	GAS	○	RAMP CURB		
EXISTING	LEGEND - PLAN	NEW	EXISTING	LEGEND - PLAN	NEW

**LOCATION APPROVED UNDERGROUND STRUCTURES**

SUPR. U/G STRUCTURES DATE COMMITTEE

NOTE: LOCATION OF UNDERGROUND STRUCTURES AS SHOWN ARE BASED ON THE BEST INFORMATION AVAILABLE. BUT NO GUARANTEE IS GIVEN THAT ALL EXISTING UTILITIES ARE SHOWN OR THAT THE GIVEN LOCATIONS ARE EXACT. CONFIRMATION OF EXISTENCE AND EXACT LOCATION OF ALL SERVICES MUST BE OBTAINED FROM THE INDIVIDUAL UTILITIES BEFORE PROCEEDING WITH CONSTRUCTION.

**B.M.(36-037) 235.778m**  
W. SIDE OF WOODLAWN ST. N. OF NESS AVE., TBLT IN E. CONC. FOUNDATION OF ST.JAMES CIVIC CENTRE, 18m N. OF S.E. CORNER OF BLDG & 0.3m BELOW CONC. BLOCK.

ISSUED FOR TENDER	07/25/02	D.T.B.
NO. REVISIONS	DATE	BY

**GENIVAR**

DESIGNED BY: D.T.B. CHECKED BY: B.D.E.  
DRAWN BY: D.T.B. APPROVED BY: D.T.B.

HOR. SCALE: AS NOTED

DATE: MAY 2, 2007

ENGINEER'S SEAL

CONSULTANT DRAWING NO. 07043C01

**THE CITY OF WINNIPEG**  
PUBLIC WORKS DEPARTMENT

**ST. JAMES CIVIC CENTRE**  
EXISTING EAST PARKING LOT  
SITE/DEMOLITION PLAN

CITY DRAWING NUMBER 227-2007-001  
SHEET 1 OF 4  
REV. 1 0