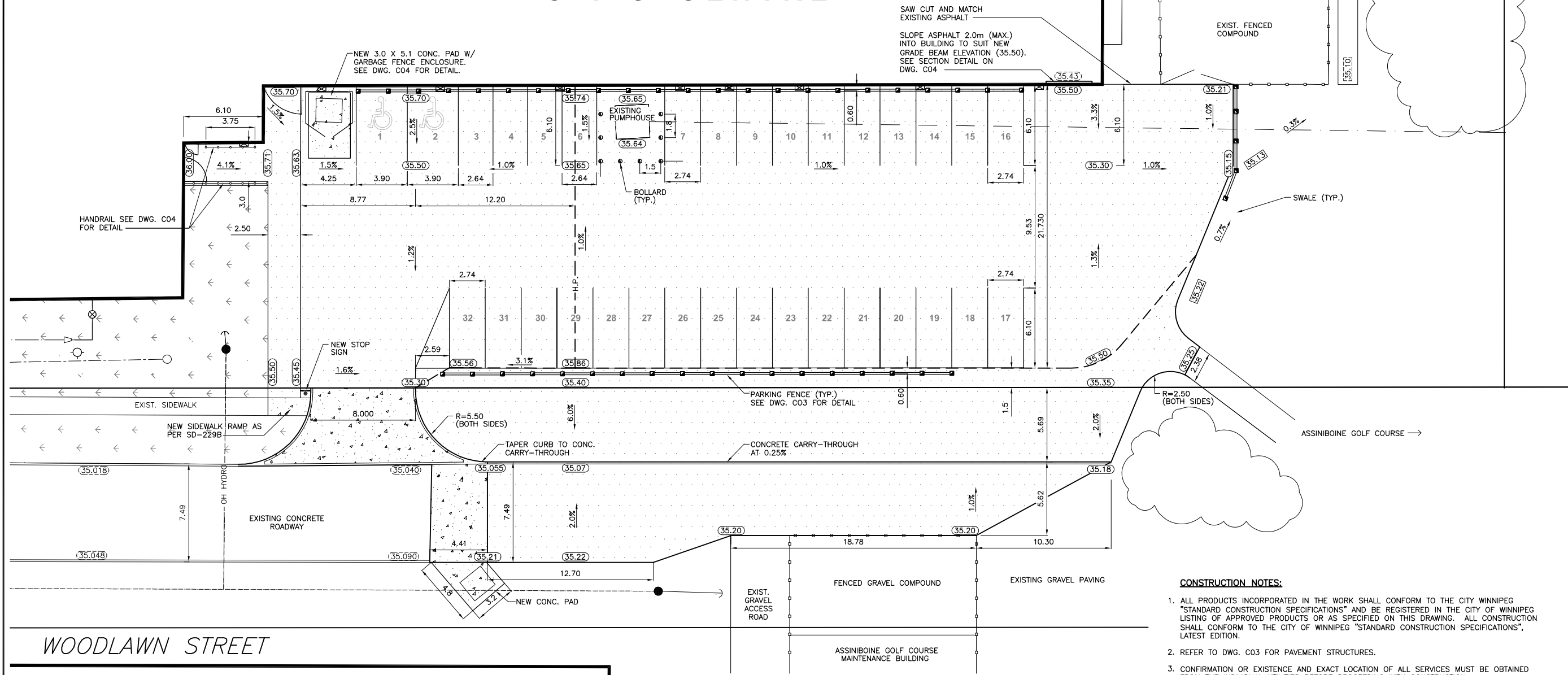


ST. JAMES CIVIC CENTRE



- CONSTRUCTION NOTES:**
1. ALL PRODUCTS INCORPORATED IN THE WORK SHALL CONFORM TO THE CITY WINNIPEG "STANDARD CONSTRUCTION SPECIFICATIONS" AND BE REGISTERED IN THE CITY OF WINNIPEG LISTING OF APPROVED PRODUCTS OR AS SPECIFIED ON THIS DRAWING. ALL CONSTRUCTION SHALL CONFORM TO THE CITY OF WINNIPEG "STANDARD CONSTRUCTION SPECIFICATIONS", LATEST EDITION.
 2. REFER TO DWG. C03 FOR PAVEMENT STRUCTURES.
 3. CONFIRMATION OR EXISTENCE AND EXACT LOCATION OF ALL SERVICES MUST BE OBTAINED FROM THE INDIVIDUAL UTILITIES BEFORE PROCEEDING WITH CONSTRUCTION.
 4. LOCATION AND ELEVATION OF EXISTING WORKS TO BE VERIFIED BY THE CONTRACTOR PRIOR TO CONSTRUCTION. IT IS THE RESPONSIBILITY OF THE CONTRACTOR TO VERIFY THE LOCATIONS OF SUCH UTILITIES, PIPES, SURVEY MARKERS, OR STRUCTURES AND NOTIFY ALL RELEVANT UTILITIES PRIOR TO COMMENCEMENT OF CONSTRUCTION. THE CONTRACTOR SHALL NOTIFY THE CONTRACT ADMINISTRATOR OF ANY ERROR OR OMISSION PRIOR TO CONSTRUCTION.
 5. ALL AREAS AFFECTED BY CONSTRUCTION TO BE RESTORED TO THE ORIGINAL CONDITION UNLESS OTHERWISE NOTED ON THE DRAWINGS.
 6. ALL GRADES TO BE CONFIRMED WITH THE CONTRACT ADMINISTRATOR PRIOR TO CONSTRUCTION.
 7. ADD 200.0m TO OBTAIN GEODETIC ELEVATIONS.

PROPOSED SITE AND GRADING PLAN
SCALE 1:150

WOODLAWN STREET

DEER LODGE
CURLING CLUB

EXISTING	LEGEND - PLAN	NEW	EXISTING	LEGEND - PLAN	NEW	EXISTING	LEGEND - PROFILE	NEW
150 mm WM	WATERMAIN	150 mm WM	HYDRO	150 mm WM	WATERMAIN			
+	HYDRANT VALVE	+	MTS CONCRETE	+	HYDRANT VALVE			
300 mm LDS	LAND DRAINAGE SEWER	300 mm LDS	LIMIT OF ASPHALT	300 mm LDS	SEWER			
250 mm CS	COMBINED SEWER	250 mm CS	CURB RENEWAL					
○	MANHOLE	●	ASPHALT ELEVATIONS	○	SOUTH/EAST R			
□	CATCH BASIN (CB)	●	PROPERTY LINE	○	NORTH/WEST R			
△	CATCH PIT (CP)	▲	SURVEY BAR	○	PROFILE			
○	SIGN	+	RAMP CURB	○	SOUTH/EAST GUTTER			
○	LAMP STANDARD	○	RAMP CURB	○	NORTH/WEST GUTTER			
○	GAS							

LOCATION APPROVED UNDERGROUND STRUCTURES

W. SIDE OF WOODLAWN ST. N. OF NESS AVE., TBLT IN E. CONC. FOUNDATION OF ST. JAMES CIVIC CENTRE, 18m N. OF S.E. CORNER OF BLDG & 0.3m BELOW CONC. BLOCK.

235.778m

DATE: MAY 2, 2007

GENIVAR

ENGINEER'S SEAL

DESIGNED BY: D.T.B. CHECKED BY: B.D.E.

DRAWN BY: D.T.B. APPROVED BY: D.T.B.

HOR. SCALE: AS NOTED

DATE: MAY 2, 2007

THE CITY OF WINNIPEG

PUBLIC WORKS DEPARTMENT

ST. JAMES CIVIC CENTRE
PROPOSED EAST PARKING LOT
SITE AND GRADING PLAN

CITY DRAWING NUMBER: 227-2007-C02
SHEET 2 OF 4

REV. 2 0

