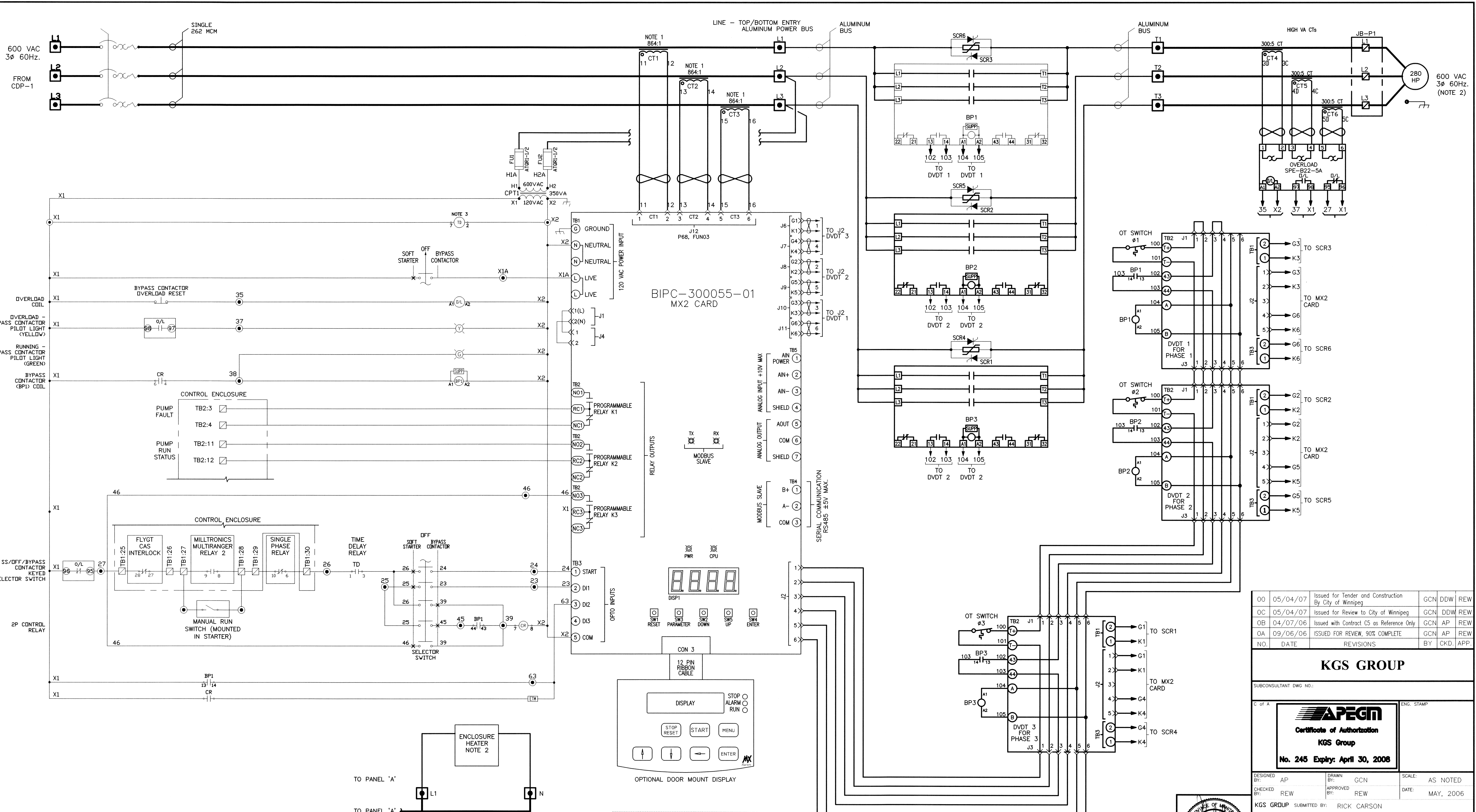


24"x36"/[609-914] P:\Projects\2005\05-0107-17-Electrical\Drawings\CC5-48aE-004c-01-00.dwg - Tab: E-004 - Jun 01, 2007 - 4:57pm - User: Nelson, G:\ Nelson



NOTES

1. INCOMING POWER THROUGH CT'S. SEE CT FASTENING DIAGRAM IN INSTRUCTION MANUAL FOR DETAILS.
2. ENCLOSURE HEATER EQUIPPED WITH AN INTEGRAL THERMOSTAT AND MAINTAINS THE INTERNAL ENCLOSURE TEMPERATURE AT 10°C.
3. SOLID-STATE TIMER WITH PROGRAMMABLE ON-DELAY TIME RANGE SETTABLE FROM 0.05 sec TO 300 HOURS ACCEPTABLE PRODUCT: OMRON PART No. H3CR-A8.
4. MAXIMUM RAMP DOWN TIME SHALL BE 10 SECONDS AND THE VOLTAGE SHALL NOT BE ALLOWED TO RAMP BELOW 60% OF FULL VOLTAGE BEFORE SOFT START IS DEACTIVATED TO ALLOW PUMP MOTOR TO COME TO A COMPLETE STOP. VERIFY DECELERATION SETTINGS WITH PUMP MANUFACTURER.

LEGEND

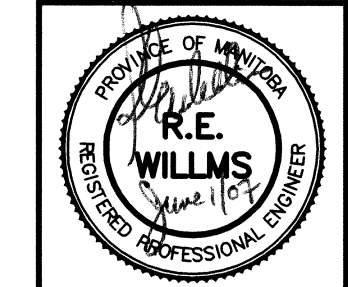
- PC BOARD TERMINALS
- WIRE NODE SYMBOL MAY HAVE TERMINAL BLOCK
- POWER TERMINAL
- CUSTOMER TERMINAL
- BENSHAW TERMINAL
- DEVICE TERMINAL
- ELAPSED TIME METER
- TWISTED PAIR
- FIELD WIRING
- PANEL WIRING
- CONNECTOR
- SHIELDED WIRE

***** IMPORTANT *****
PASSCODE # - - - -

CUSTOMER TERMINALS
L1 L2 L3
T1 T2 T3

CITY OF WINNIPEG IS RESPONSIBLE FOR MECHANICAL AND ELECTRICAL WORK
MFA acceptance is limited to the Red River Floodway Expansion project only, and specifically excludes acceptance of any mechanical and electrical works indicated on this drawing, which are incorporated for the purpose of City of Winnipeg Bid Opportunity 238-2007

THE CITY OF WINNIPEG WATER & WASTE DEPARTMENT
CAD FILE DRAWING NUMBER: CC5-48aE-004c-01-00.dwg
CITY DRAWING NUMBER: -



NO.	DATE	REVISIONS	BY	CHKD.	APP.
DO	05/04/07	Issued for Tender and Construction By City of Winnipeg	GCN	DDW	REW
OC	05/04/07	Issued for Review to City of Winnipeg	GCN	DDW	REW
OB	04/07/06	Issued with Contract C5 as Reference Only	GCN	AP	REW
DA	09/06/06	ISSUED FOR REVIEW, 90% COMPLETE	GCN	AP	REW

KGS GROUP
SUBCONSULTANT DWG NO.:
C of A: **APEGM**
Certificate of Authorization
KGS Group
No. 245 Expiry: April 30, 2008

DESIGNED BY: AP	DRAWN BY: GCN	SCALE: AS NOTED
CHECKED BY: REW	APPROVED BY: REW	DATE: MAY, 2006

MANITOBA FLOODWAY AUTHORITY
OWNER
PROJECT: RED RIVER FLOODWAY EXPANSION
PHASE: MAIN CHANNEL CONTRACT No C5
TITLE: KILDARE LAND DRAINAGE FLOOD PUMPING STATION ELECTRICAL WORKS
FLOOD PUMP - FP-2 SCHEMATIC/WIRING DIAGRAM
MFA acceptance:

DOUG McNEIL VICE PRESIDENT OF ENGINEERING AND CONSTRUCTION	OWNER DWG NO.: CC5-48aE-004c	SHT: 01	REV: 00
---	------------------------------	---------	---------