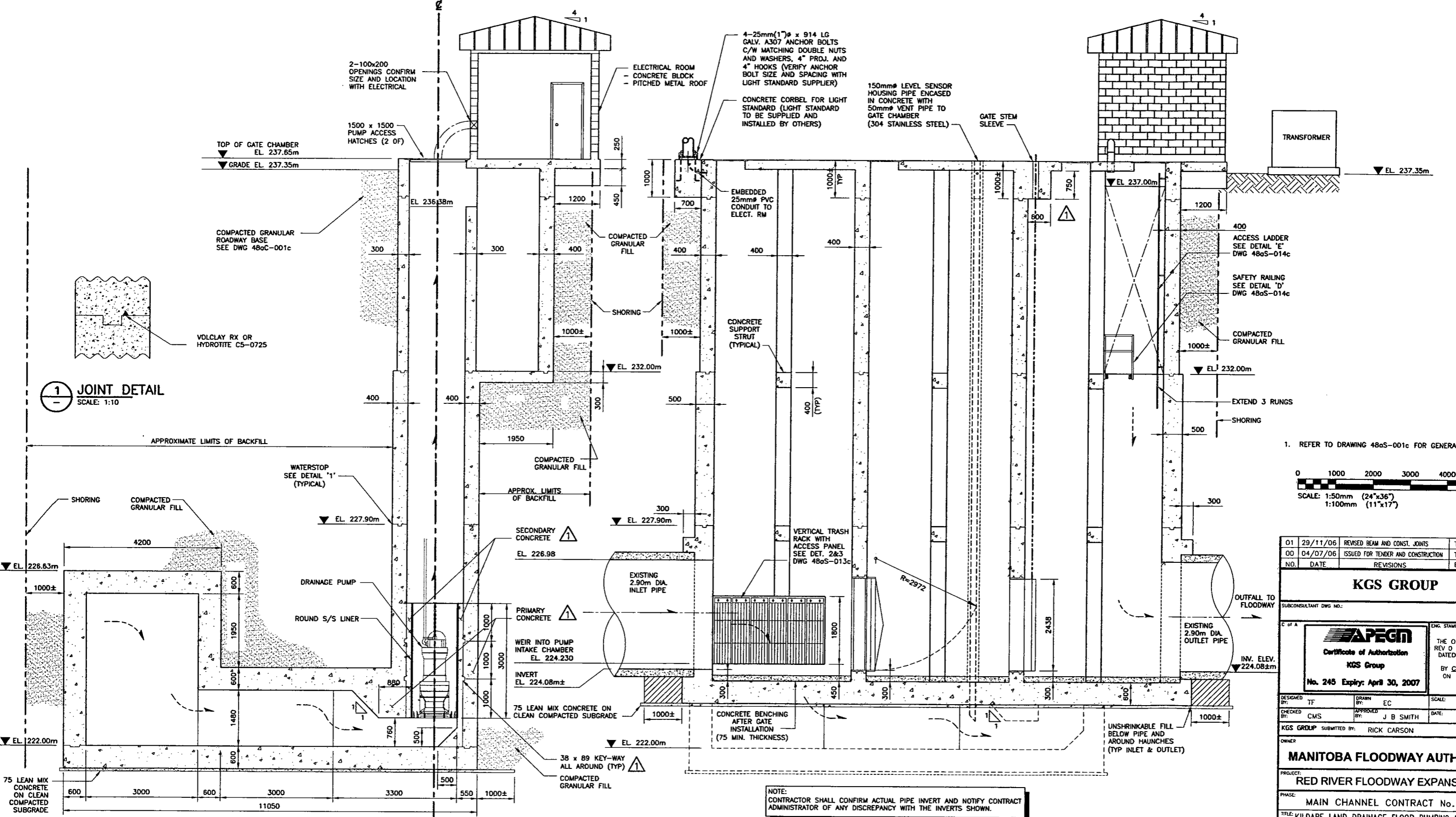


24"x36" (609x914) 2d/Prep/05/2005/05-0107-17/Civil/Drawings/REVISION 01/CC5-48aS-003c-01-01.dwg - Tab. 3c - Apr. 05, 2007 - 3:53pm - User Name: jgritzinger

PUMPS



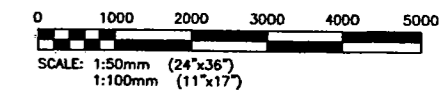
1 JOINT DETAIL
SCALE: 1:10

A SECTION
1c&2c SCALE: 1:50

B SECTION
1c&2c SCALE: 1:50

NOTE:
CONTRACTOR SHALL CONFIRM ACTUAL PIPE INVERT AND NOTIFY CONTRACT ADMINISTRATOR OF ANY DISCREPANCY WITH THE INVERTS SHOWN.

1. REFER TO DRAWING 48aS-001c FOR GENERAL NOTES.



01	29/11/06	REVISED BEAM AND CONST. JOINTS	TF	CMS	JBS
00	04/07/06	ISSUED FOR TENDER AND CONSTRUCTION	TF	CMS	JBS
NO.	DATE	REVISIONS	BY	CHKD.	APP.

KGS GROUP
SUBCONSULTANT DWG NO.:

 Certificate of Authorization KGS Group No. 245 Expiry: April 30, 2007	ENG. STAMP THE ORIGINAL ISSUE REV 0 WAS STAMPED, DATED AND SIGNED BY: G.M. SEIPMAN ON: 04/07/06 D/M/Y
--	---

DESIGNED BY: TF	DRAWN BY: EC	SCALE: AS NOTED
CHECKED BY: CMS	APPROVED BY: J B SMITH	DATE: MAY 2006
KGS GROUP SUBMITTED BY: RICK CARSON		

MANITOBA FLOODWAY AUTHORITY

PROJECT: RED RIVER FLOODWAY EXPANSION

PHASE: MAIN CHANNEL CONTRACT No. C5

TITLE: KILDARE LAND DRAINAGE FLOOD PUMPING STATION STRUCTURAL WORKS

CONCRETE SECTIONS A AND B

RELEASED FOR CONSTRUCTION:

DOUG McNEIL
VICE PRESIDENT OF ENGINEERING AND CONSTRUCTION

OWNER DWG NO.: CC5-48aS-003c SH. 01 REV. 01

