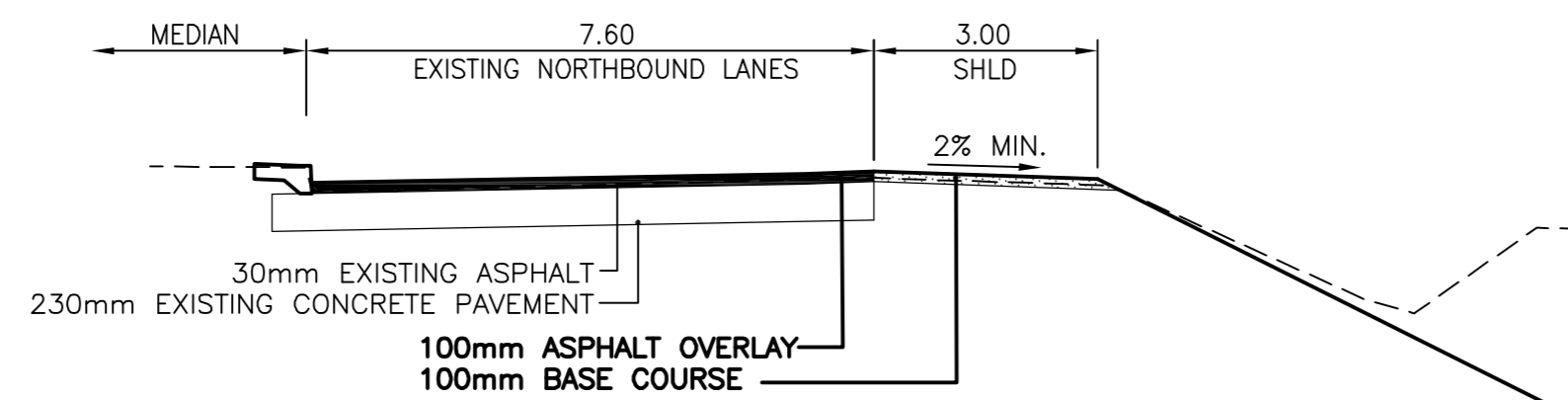
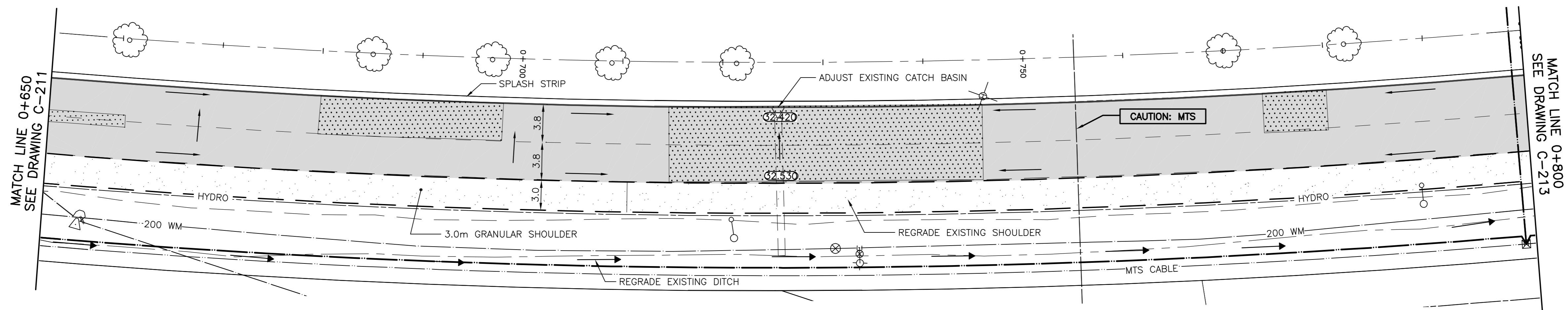
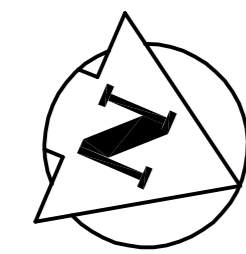


**NOTE:**  
STATIONING ALONG  
CENTRELINE OF WAVERLEY  
STREET RIGHT-OF-WAY.

**WAVERLEY STREET – NORTHBOUND**



**TYPICAL PAVEMENT SECTION NORTHBOUND LANES  
THROUGH SUPERELEVATION**

**WARNING**

IF POWER EQUIPMENT OR EXPLOSIVES ARE TO BE USED FOR EXCAVATION ON THIS PROJECT THE CONTRACTOR MUST:  
1) NOTIFY THE GAS COMPANY OF THE PROPOSED LOCATION OF EXCAVATION.  
2) TAKE PRECAUTION TO AVOID DAMAGE TO GAS COMPANY INSTALLATIONS.  
SEE PROVINCIAL REGULATION 140/92 FOR DETAILS

**METRIC**

WHOLE NUMBERS INDICATE MILLIMETRES  
DECIMALIZED NUMBERS INDICATE METRES

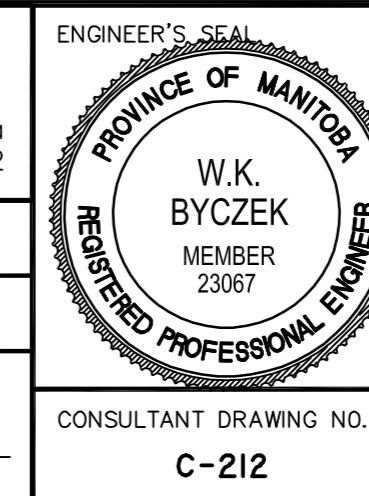
**LOCATION APPROVED UNDERGROUND STRUCTURES**

SUPV. U/G STRUCTURES COMMITTEE	DATE

**NOTE:**  
LOCATION OF UNDERGROUND STRUCTURES AS SHOWN ARE BASED ON THE BEST INFORMATION AVAILABLE BUT NO GUARANTEE IS GIVEN THAT ALL EXISTING UTILITIES ARE SHOWN OR THAT THE GIVEN LOCATIONS ARE EXACT. CONFIRMATION OF EXISTENCE AND EXACT LOCATION OF ALL SERVICES MUST BE OBTAINED FROM THE INDIVIDUAL UTILITIES BEFORE PROCEEDING WITH CONSTRUCTION.

BENCH MARK: 217 (654217) – E. shoulder of gravel Two-Mile Rd. (formerly Waverley St.) & drain S. of Superstreet spur line, 3rd set of hydro poles S. of Conc. new Waverley St., 1bit. in 7.6m Conc. pile, 57.3m S. of hydro poles & 8.3m W. of line most W. set of hydro poles.

<b>Stantec Consulting Ltd.</b>	
905 Waverley Street, Winnipeg, Manitoba Tel 204-489-5900 Fax 204-453-9012	
DESIGNED BY: <b>W.K.B.</b>	CHECKED BY: <b>V.M.M.</b>
DRAWN BY: <b>T.G.</b>	APPROVED BY: <b>W.K.B.</b>
HOR. SCALE: 1:250	RELEASED FOR CONSTRUCTION:
VERTICAL: 1:10	DATE:
NO. REVISIONS	DATE BY



<b>THE CITY OF WINNIPEG</b>	
Winnipeg TRANSPORTATION ENGINEERING DIVISION	
<b>WAVERLEY STREET-NORTHBOUND</b>	
BISON DRIVE TO BISHOP GRANDIN BOULEVARD	
STA 0+650 TO STA 0+800	
2007 REGIONAL STREETS PROGRAM	
SHEET <b>13</b> OF <b>15</b>	CAD FILE DRAWING NUMBER <b>04580c-208-685.dwg</b>
CITY DRAWING NUMBER <b>P-3276-13</b>	

