

- NOTES**
- 1.) ALL 7.500m WIDE PAVEMENT 150mm REINFORCED CONCRETE WITH 75mm LIP CURB.
 - 2.) MODIFIED BARRIER CURB CONSTRUCTED ON ALL RADII 9.000 m AND LESS.
 - 3.) PIPE CLASSES SHOWN FOR W.W.S. AND L.D.S. ARE CONCRETE PIPE UNLESS OTHERWISE SHOWN.
 - 4.) ALL UNDERGROUND SERVICES TO BE INSTALLED BY TRENCHLESS METHODS.
 - 5.) ALL CORNER RADII ARE 7.50m UNLESS OTHERWISE SHOWN.
 - 6.) MINIMUM = 0.56% GRADE ON ALL CATCH BASIN LEADS.
 - 7.) TREES LOCATED WITHIN BOULEVARDS WILL NOT BE CLEARED TO BE DETERMINED BY CONTACT ADMINISTRATOR.



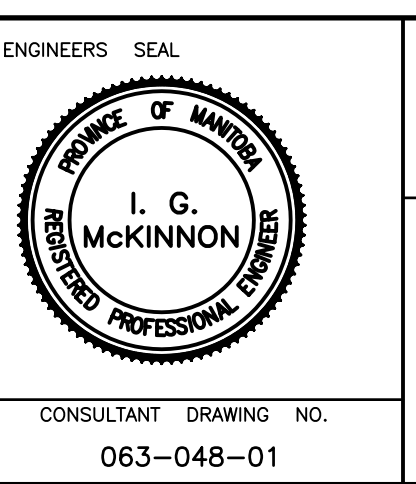
<table border="0"> <tr> <td>—</td><td>WATERMAIN</td><td>—</td><td>REDUCER</td><td>—</td><td>150mm W.W.</td><td>—</td><td>WATERMAIN</td><td>—</td><td>150mm W.W.</td> </tr> <tr> <td>—</td><td>HYDRANT VALVE</td><td>—</td><td>PLUG</td><td>—</td><td>300mm L.D.S.</td><td>—</td><td>VALVE</td><td>—</td><td>300mm L.D.S.</td> </tr> <tr> <td>—</td><td>LAND DRAINAGE SEWER</td><td>—</td><td>TRAFFIC SIGNAL GAS</td><td>—</td><td>250mm W.W.S.</td><td>—</td><td>LAND DRAINAGE SEWER</td><td>—</td><td>250mm W.W.S.</td> </tr> <tr> <td>—</td><td>WASTE WATER SEWER</td><td>—</td><td>HYDRO M.T.S.</td><td>—</td><td></td><td>—</td><td>WASTE WATER SEWER</td><td>—</td><td>250mm W.W.S.</td> </tr> <tr> <td>○</td><td>MANHOLE</td><td>●</td><td>SURVEY BAR</td><td>—</td><td></td><td>—</td><td>JUNCTIONS</td><td>—</td><td></td> </tr> <tr> <td>□</td><td>CATCH BASIN</td><td>■</td><td>CURB STOP</td><td>—</td><td></td><td>—</td><td>CULVERT</td><td>—</td><td></td> </tr> <tr> <td>△</td><td>CURB INLET</td><td>▲</td><td>C.B. LEAD</td><td>—</td><td></td><td>—</td><td>GUTTER</td><td>—</td><td></td> </tr> <tr> <td>+</td><td>TEE</td><td>+</td><td>TREE</td><td>—</td><td></td><td>—</td><td></td><td>—</td><td></td> </tr> <tr> <td>—</td><td>BEND</td><td>—</td><td>LAMP STANDARD</td><td>—</td><td></td><td>—</td><td></td><td>—</td><td></td> </tr> <tr> <td>—</td><td>ANODE</td><td>—</td><td></td><td>—</td><td></td><td>—</td><td></td><td>—</td><td></td> </tr> </table>	—	WATERMAIN	—	REDUCER	—	150mm W.W.	—	WATERMAIN	—	150mm W.W.	—	HYDRANT VALVE	—	PLUG	—	300mm L.D.S.	—	VALVE	—	300mm L.D.S.	—	LAND DRAINAGE SEWER	—	TRAFFIC SIGNAL GAS	—	250mm W.W.S.	—	LAND DRAINAGE SEWER	—	250mm W.W.S.	—	WASTE WATER SEWER	—	HYDRO M.T.S.	—		—	WASTE WATER SEWER	—	250mm W.W.S.	○	MANHOLE	●	SURVEY BAR	—		—	JUNCTIONS	—		□	CATCH BASIN	■	CURB STOP	—		—	CULVERT	—		△	CURB INLET	▲	C.B. LEAD	—		—	GUTTER	—		+	TEE	+	TREE	—		—		—		—	BEND	—	LAMP STANDARD	—		—		—		—	ANODE	—		—		—		—		<p>LOCATION APPROVED</p> <p>SUPV. U/G STRUCTURES DATE</p> <p>NOTE: LOCATION OF UNDERGROUND STRUCTURES AS SHOWN ARE BASED ON THE BEST INFORMATION AVAILABLE BUT NO GUARANTEE IS GIVEN THAT ALL EXISTING UTILITIES ARE SHOWN OR THAT THE GIVEN LOCATIONS ARE EXACT. CONFIRMATION OF EXISTENCE AND EXACT LOCATION OF ALL SERVICES MUST BE OBTAINED FROM THE INDIVIDUAL UTILITIES BEFORE PROCEEDING WITH CONSTRUCTION.</p>
—	WATERMAIN	—	REDUCER	—	150mm W.W.	—	WATERMAIN	—	150mm W.W.																																																																																												
—	HYDRANT VALVE	—	PLUG	—	300mm L.D.S.	—	VALVE	—	300mm L.D.S.																																																																																												
—	LAND DRAINAGE SEWER	—	TRAFFIC SIGNAL GAS	—	250mm W.W.S.	—	LAND DRAINAGE SEWER	—	250mm W.W.S.																																																																																												
—	WASTE WATER SEWER	—	HYDRO M.T.S.	—		—	WASTE WATER SEWER	—	250mm W.W.S.																																																																																												
○	MANHOLE	●	SURVEY BAR	—		—	JUNCTIONS	—																																																																																													
□	CATCH BASIN	■	CURB STOP	—		—	CULVERT	—																																																																																													
△	CURB INLET	▲	C.B. LEAD	—		—	GUTTER	—																																																																																													
+	TEE	+	TREE	—		—		—																																																																																													
—	BEND	—	LAMP STANDARD	—		—		—																																																																																													
—	ANODE	—		—		—		—																																																																																													

<p>DESIGNED BY: DJ</p> <p>CHECKED BY: RH</p> <p>DRAWN BY: DJ</p> <p>APPROVED BY: SM</p> <p>HOR. SCALE: 1:250</p> <p>VERT. SCALE: 1:50</p> <p>RELEASED FOR CONSTRUCTION: 11/04/2007</p> <p>ORIGINALLY SIGNED BY: K. Turko</p>	<p>DATE: February 2007</p>
--	----------------------------

SEG ENGINEERING INC.

200 TACHE AVENUE
WINNIPEG, MANITOBA
(204)-233-2113

DESIGNED BY: DJ
CHECKED BY: RH
DRAWN BY: DJ
APPROVED BY: SM
HOR. SCALE: 1:250
VERT. SCALE: 1:50
RELEASED FOR CONSTRUCTION: 11/04/2007
ORIGINALLY SIGNED BY: K. Turko



THE CITY OF WINNIPEG
PUBLIC WORKS DEPARTMENT

WATERMAIN, WASTEWATER SEWER, LAND DRAINAGE SEWER AND STREET PAVEMENT INSTALLATION
BETHRAY BAY (WEST LEG)
BETHRAY BAY (NORTH LEG)
TO RIVERBEND AVENUE

SHEET 1 OF 1
CITY DRAWING NO. D-9127