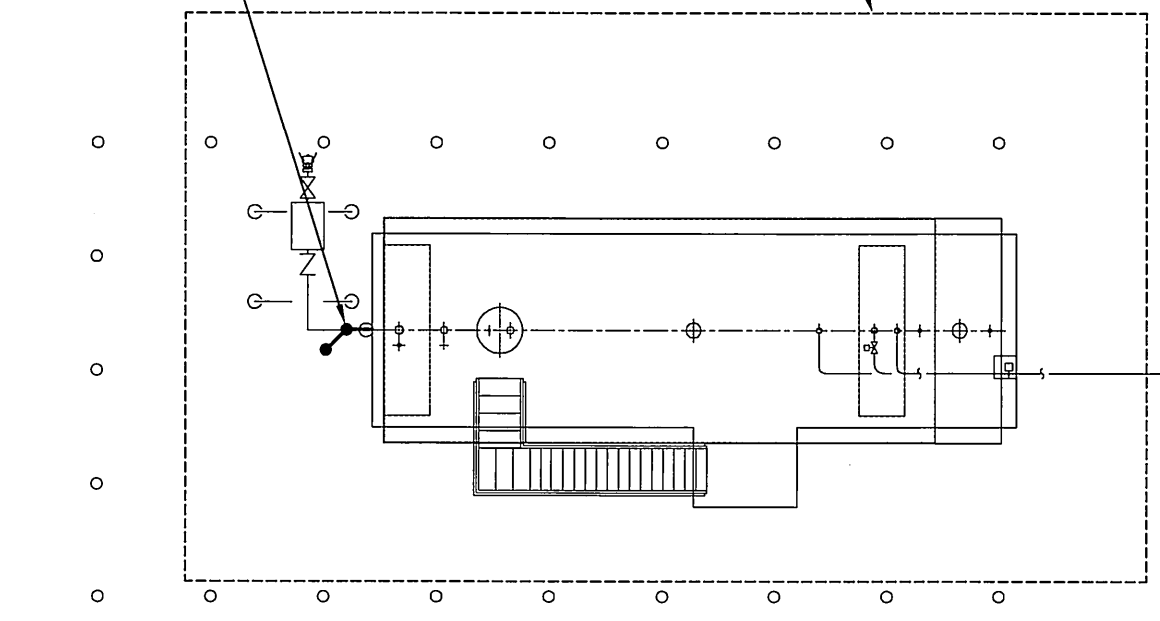


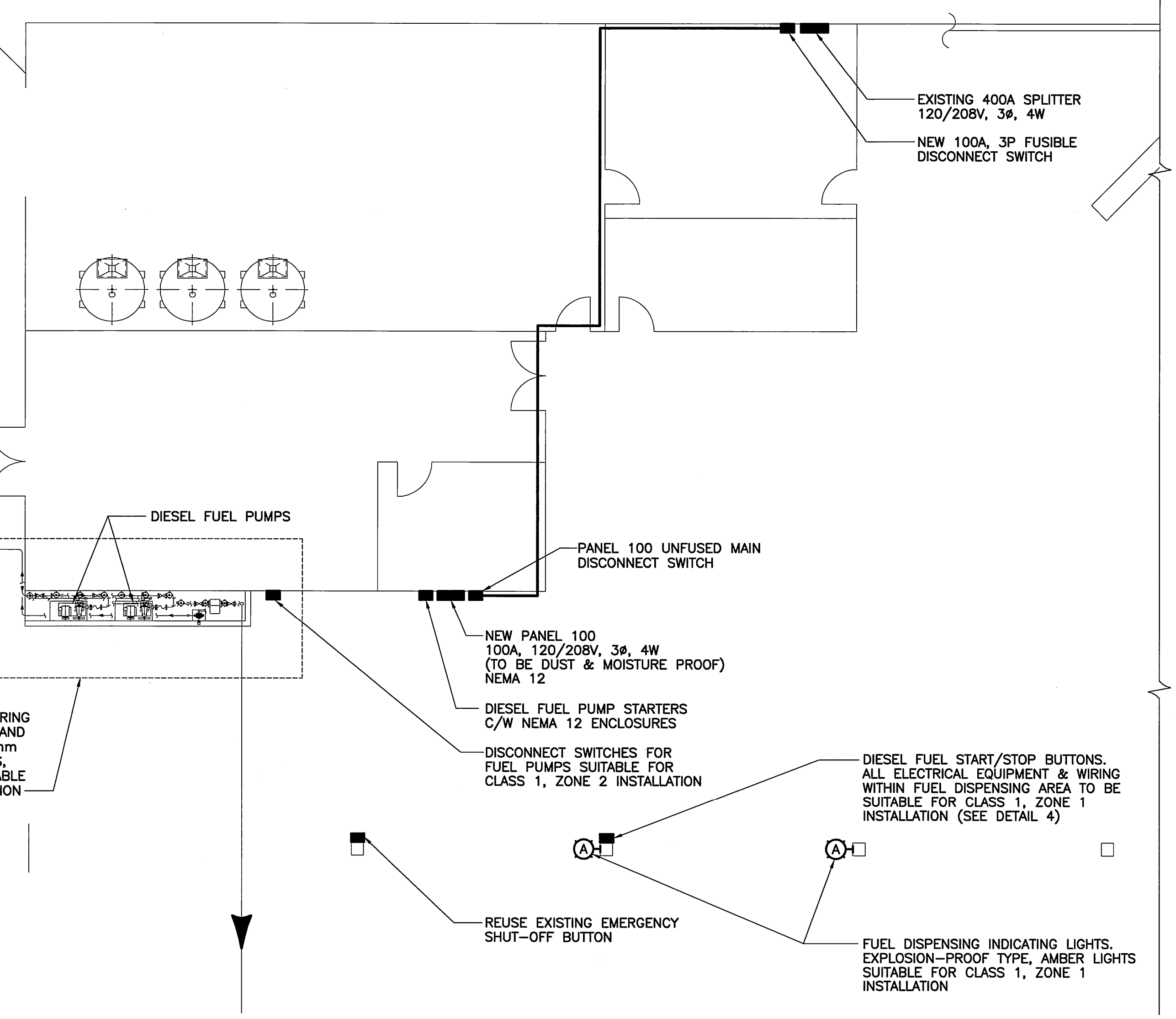
ALL ELECTRICAL WITHIN 3m FROM FUEL TANKS TO BE SUITABLE FOR CLASS 1, ZONE 1 INSTALLATION

GROUNDING ELECTRODE, BONDING CONNECTIONS TO TANK AND PIPING, AND BONDING CLAMP FOR FUEL LOADING. REFER TO MECHANICAL DWG. M0005 FOR DETAILS



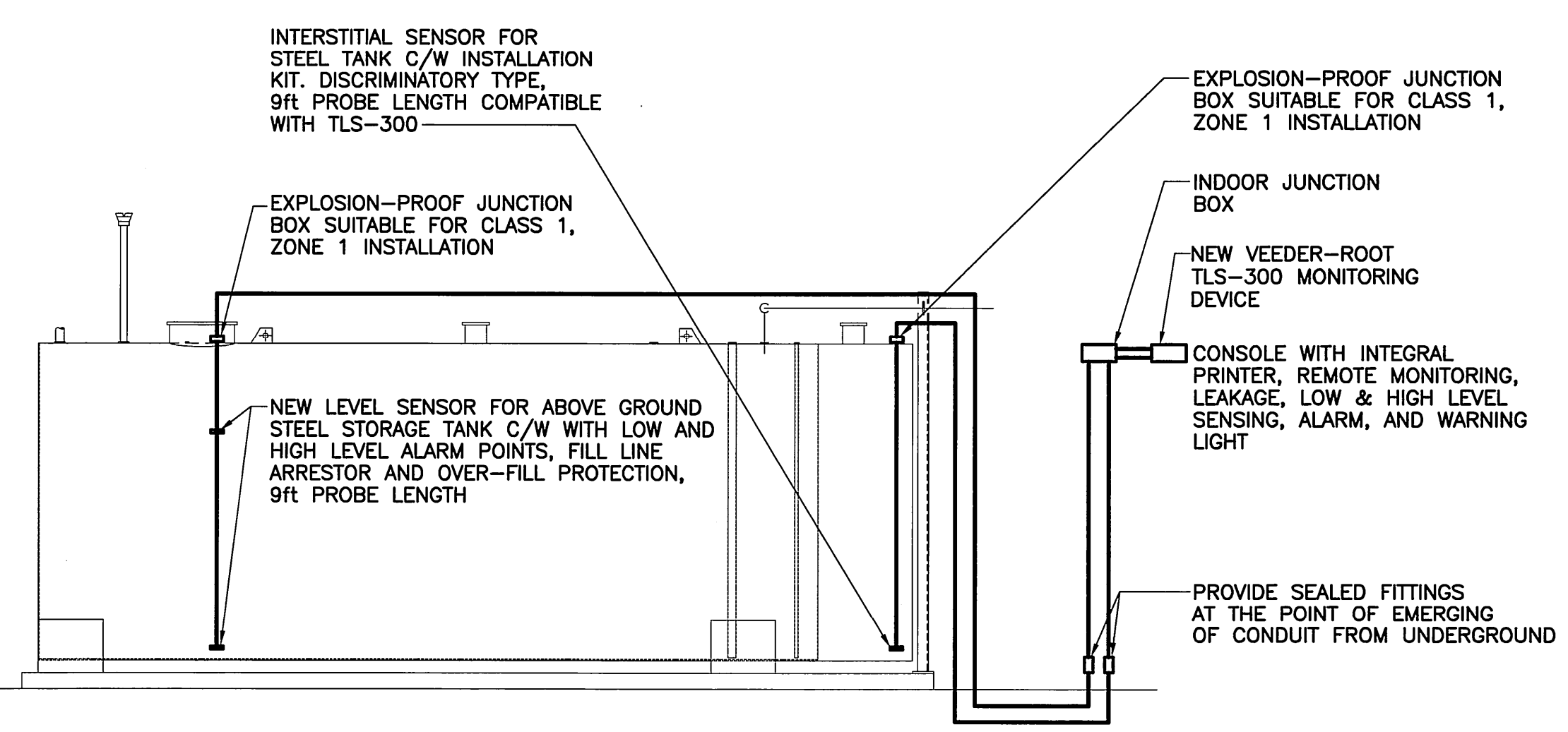
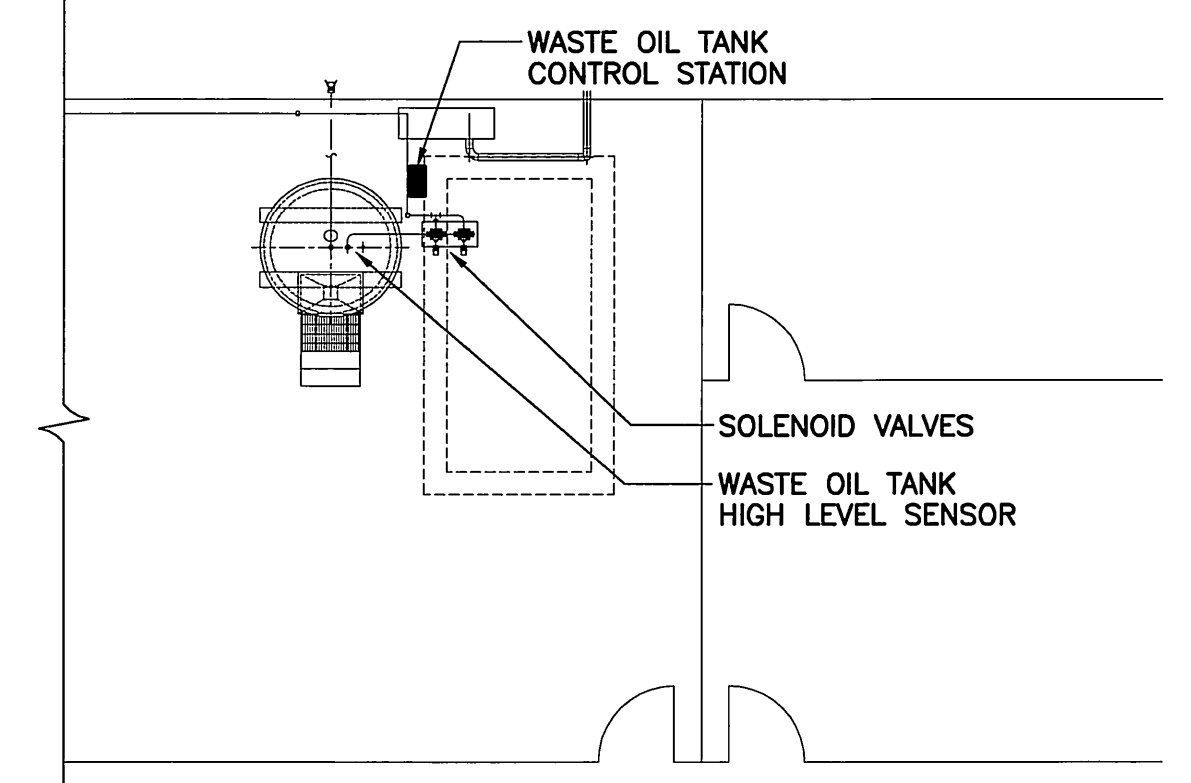
ALL ELECTRICAL EQUIPMENT & WIRING WITHIN 1.5m IN ALL DIRECTIONS AND 7.5m HORIZONTALLY UP TO 900mm ABOVE FLOOR FROM FUEL PUMPS, VALVES, OR METERS TO BE SUITABLE FOR CLASS 1, ZONE 2 INSTALLATION

**1**  
ELECTRICAL LAYOUT  
N.T.S.

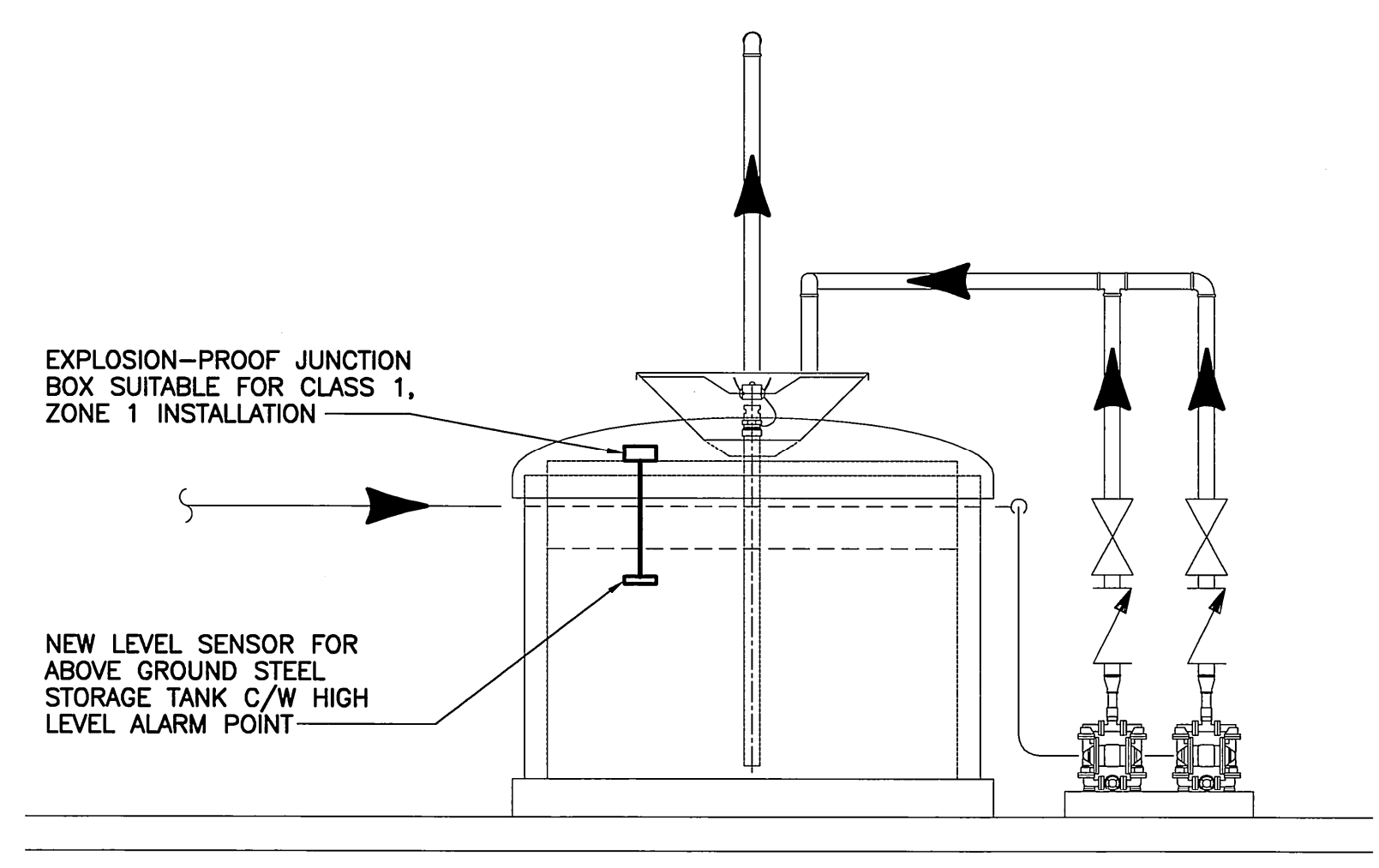


**NOTE:**

1. TO MAINTAIN THE INTRINSICALLY SAFE INTEGRITY OF THE INSTALLED CONSOLE, SENSOR & PROBE CONDUIT CAN SHARE THE SAME TRENCHES WITH POWER CONDUITS.
2. INSTALL CONDUIT FROM ALL PROBE AND SENSOR LOCATIONS TO THE CONSOLE'S LOCATION. KNOCKOUTS FOR CONDUIT ARE PROVIDED IN THE INTRINSICALLY SAFE AREA OF THE CONSOLE FOR PROBE AND SENSOR WIRING.
3. THE RIGID METAL CONDUITS MUST BE THREADED AND PROPERLY SEALED IN ACCORDANCE WITH THE LATEST EDITION OF THE CANADIAN ELECTRICAL CODE, SECTION 18-HAZARDOUS LOCATIONS ( I.E. CLASS 1, ZONE 1 INSTALLATION).
4. INTRINSICALLY SAFE WIRING: BONDED CONDUIT MEANS THAT THE METALLIC SECTIONS OF CONDUIT ARE PERMANENTLY JOINED TO FORM AN ELECTRICALLY CONDUCTIVE PATH THAT WILL ASSURE ELECTRICAL CONTINUITY AND THAT THE CONDUIT HAS THE CAPACITY TO CONDUCT SAFELY, ANY CURRENT LIKELY TO BE IMPOSED.
5. BONDED AND NON-BONDED CONDUIT: THE WIRING BETWEEN THE MONITOR AND EACH PROBE/SENSOR LOCATION MUST BE #16AWG. STRANDED COPPER WIRES WITHIN A SHIELDED CABLE.
6. CONNECT THE BARRIER GROUND TO THE EARTH ROUND BUS AT THE CLOSEST POWER DISTRIBUTION PANEL WITH #12AWG (OR LARGER) CONDUCTOR.
7. INTRINSICALLY SAFE WIRING SHALL BE INSTALLED IN ACCORDANCE WITH THE LATEST EDITION OF THE CANADIAN ELECTRICAL CODE.
8. ELECTRICAL RATING POWER INPUT 120VAC 60HZ 100VA MAXIMUM FOR CONSOLE WITH INTEGRAL PRINTER.
9. INSTALL BUILDING WIRES IN CONDUIT SYSTEMS IN ACCORDANCE WITH SECTION 16-133 - CONDUITS, CONDUIT FASTENINGS AND CONDUIT FITTINGS.
10. TERMINATE CABLES IN ACCORDANCE WITH SECTION 16151-WIRE AND BOX CONNECTORS - 0 -1000 V.

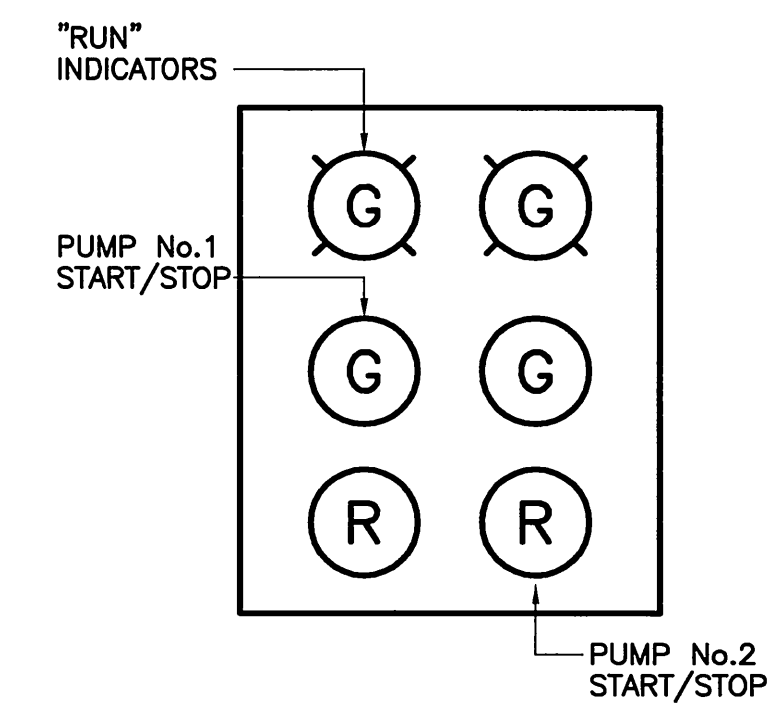


**2**  
DIESEL FUEL TANK LEVEL SENSOR/PROBE SCHEMATIC DETAIL  
N.T.S.



**3**  
WASTE OIL TANK LEVEL SENSOR/PROBE SCHEMATIC DETAIL  
N.T.S.

NOTE:  
1. SEE DETAIL 4 ON DWG. E0003 FOR CONTROL SCHEMATIC



**4**  
DIESEL FUEL START/STOP STATION DETAIL  
N.T.S.



0	ISSUED FOR TENDER	07.04.05	S.N.
NO.	DESCRIPTION	DATE	ISSUED BY
<b>REVISIONS/ISSUE</b>			
<small>THE CONTENT OF THIS DOCUMENT IS NOT INTENDED FOR THE USE OF, NOR IS IT INTENDED TO BE RELIED UPON BY ANY PERSON, FIRM OR CORPORATION, OTHER THAN THE CLIENT AND WARDROP ENGINEERING INC. WARDROP ENGINEERING DENIES ANY LIABILITY WHATSOEVER TO OTHER PARTIES FOR DAMAGES OR INJURY SUFFERED BY SUCH THIRD PARTY ARISING FROM USE OF THIS DOCUMENT BY THEM, WITHOUT THE EXPRESS WRITTEN AUTHORITY OF WARDROP ENGINEERING AND OUR CLIENT. THIS DOCUMENT IS SUBJECT TO FURTHER RESTRICTIONS IMPOSED BY THE CONTRACT BETWEEN THE CLIENT AND WARDROP ENGINEERING INC. AND THESE PARTIES' PERMISSION MUST BE SOUGHT REGARDING THIS DOCUMENT IN ALL OTHER CIRCUMSTANCES.</small>			
CLIENT			
CITY OF WINNIPEG TRANSIT DEPARTMENT			
<b>WARDROP</b>   Engineering Inc.			
PROJECT NAME			
PETROLEUM STORAGE AND HANDLING SYSTEMS REPLACEMENT			
DRAWING DESCRIPTION			
ELECTRICAL EQUIPMENT LAYOUT AND SCHEMATIC DETAILS @ 1520 MAIN STREET FACILITY			
DESIGNED BY:	DRAWN BY:	CHECKED BY:	
S.N.	H.P.C.C.		
APPROVED BY:			
SCALE:	N.T.S.	DATE:	07.02.28
DRAWING NO.	0729720100-DWG-E0002		REV.
			0

