

**NOTES:**

1. DISCONNECT AND REMOVE EXISTING ELECTRICAL AND ALL ASSOCIATED WIRES AND CONDUITS.
2. EXISTING SOUND SYSTEM SHALL BE REMOVED AND RE-INSTALLED.

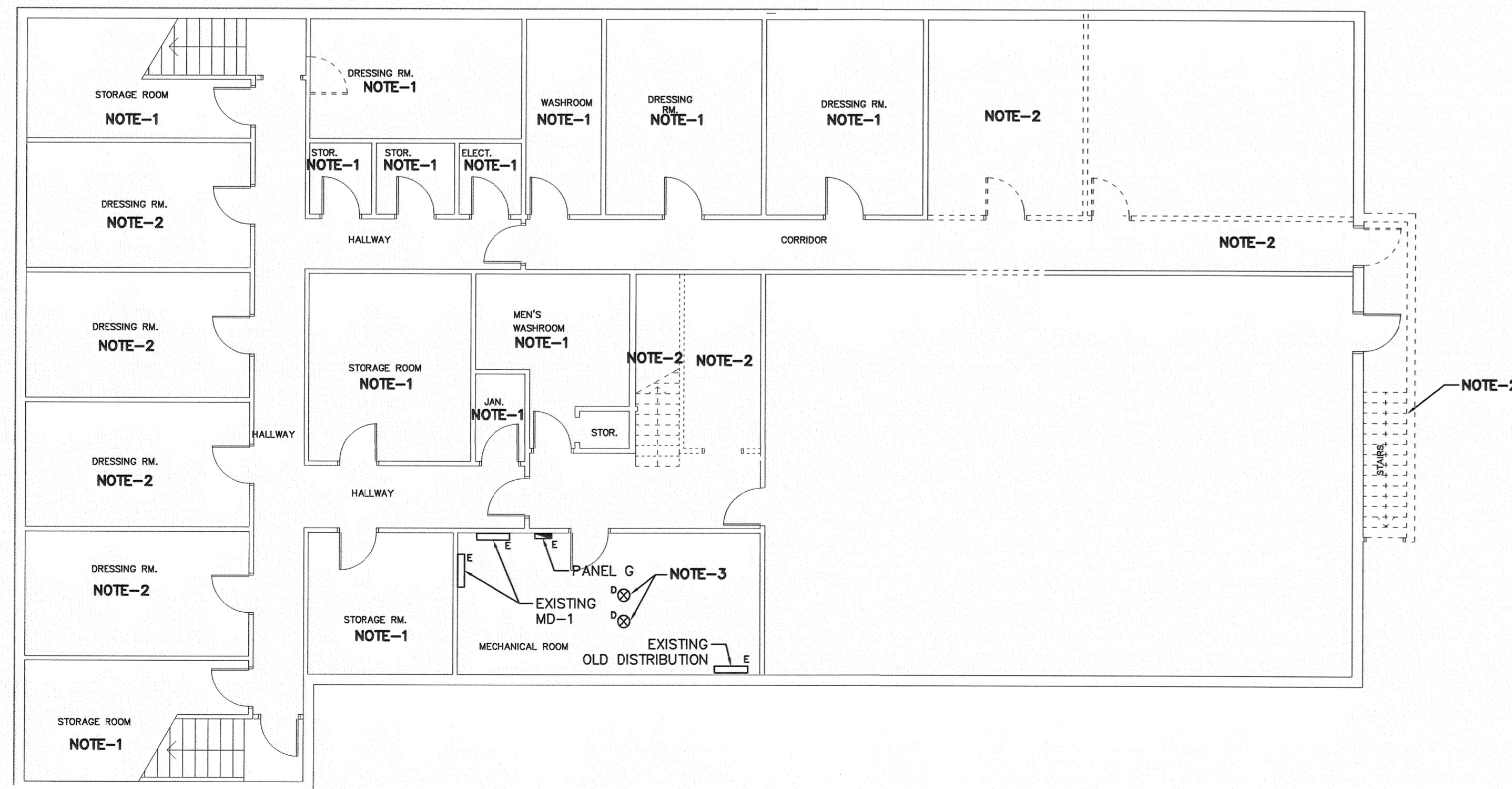
1 MAIN FLOOR - DEMOLITION PLAN  
SCALE: 1:100

- 4 ISSUED FOR TENDER DG 2007.11.13
- 3 ISSUED FOR 100% REVIEW DG 2007.11.09
- 2 ISSUED FOR 100% REVIEW DG 2007.07.06
- 1 ISSUED FOR 99% REVIEW DG 2007.06.29

This drawing must not be scaled.  
The general Contractor must verify all dimensions, datum and levels prior to commencement of work. All errors and omissions must be reported immediately to the Architect.  
Variations and modifications to work shown on this drawing shall not be carried out without written permission from the Architect.  
This drawing is the exclusive property of the Architect and cannot be reproduced without written permission of the Architect. Reproduction must bear the name of the Architect. Copyright © 2006.

seals

**APECM**  
Certificate of Authorization  
MCW/AGE Consulting  
Professional Engineers  
No. 589 Expiry: April 30, 2008



**NOTES:**

1. EXISTING ELECTRICAL IN THE INDICATED AREAS SHALL REMAIN AND BE MAINTAINED.
2. DISCONNECT AND REMOVE ALL EXISTING ELECTRICAL AND ALL ASSOCIATED WIRING AND CONDUITS IN INDICATED AREAS.
3. DISCONNECT EXISTING FURNACES.

1 BASEMENT - DEMOLITION PLAN  
SCALE: 1:100

engineers

**MCW / AGE**  
Consulting Professional Engineers  
A member of the MCOR Group of Companies  
1821 Wellington Avenue, Suite 210, Winnipeg, MB, R3M 0G4  
PHONE: (204) 778-7900 FAX: (204) 778-1119  
464 Somerset Street West, Ottawa, Ontario K1R 5J8  
740 Nicola Street, Suite 200, Vancouver, B.C. V6G 2C1  
156 Front Street West, Suite 600, Toronto, Ontario M5J 2L6

architect:  
**HAROLD FUNK ARCHITECT INC.**

#320-55 Donald Street  
Winnipeg, Manitoba  
Canada R3C 1J8  
Tel: 204 943 5987  
Fax: 204 949 9231  
E-mail: funkarch@mts.net

project:  
**VALOUR COMMUNITY CENTRE GYMNASIUM ADDITION AND REVOLUTIONS**  
715 Telfer St. North, Winnipeg, Manitoba

sheet title:  
**DEMOLITION PLAN**

project no. 5603  
scale: AS SHOWN  
drawn by: AJ  
approved by: ERI  
date November 9, 2007

sheet no.

**E-2**