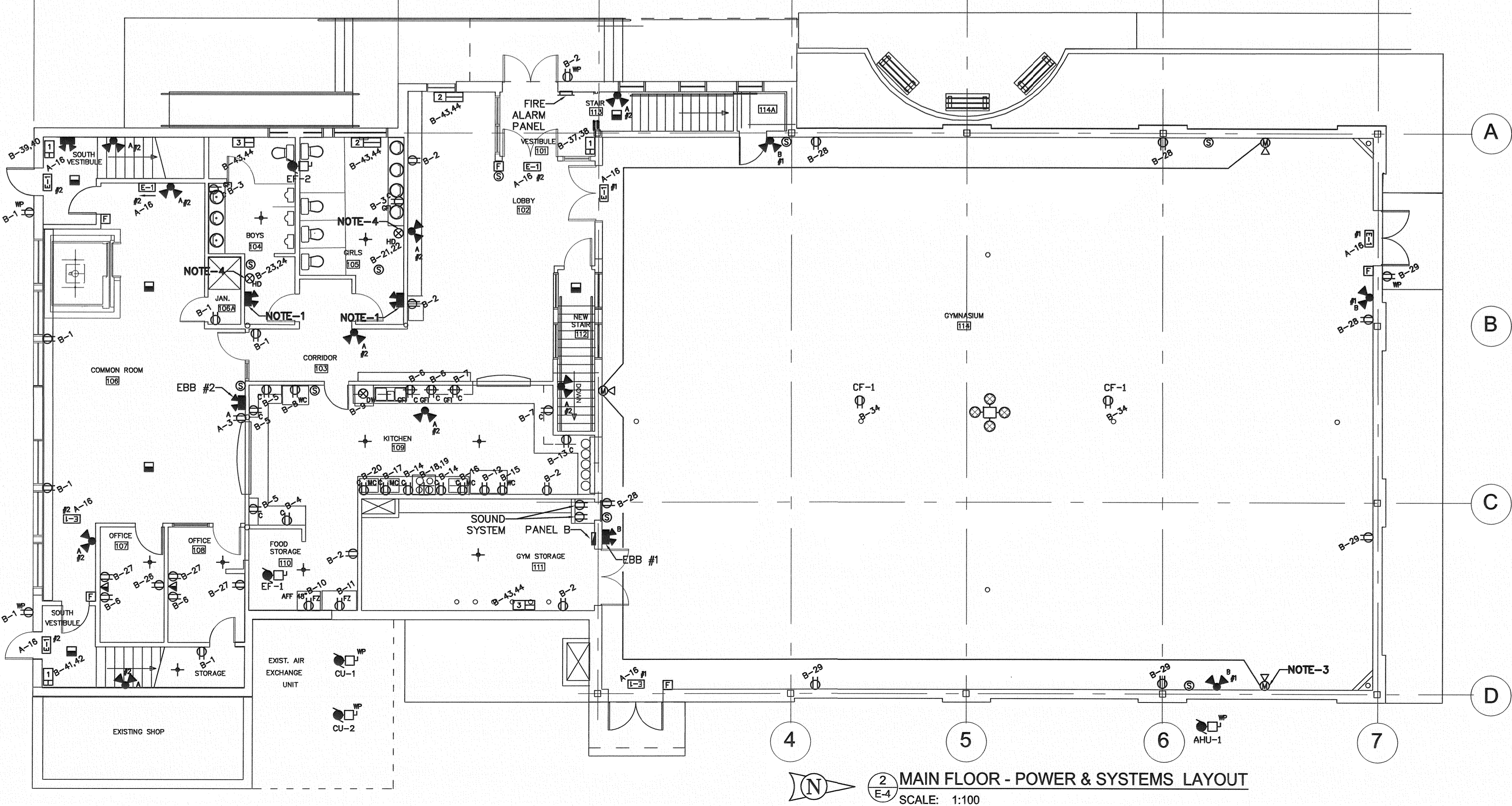
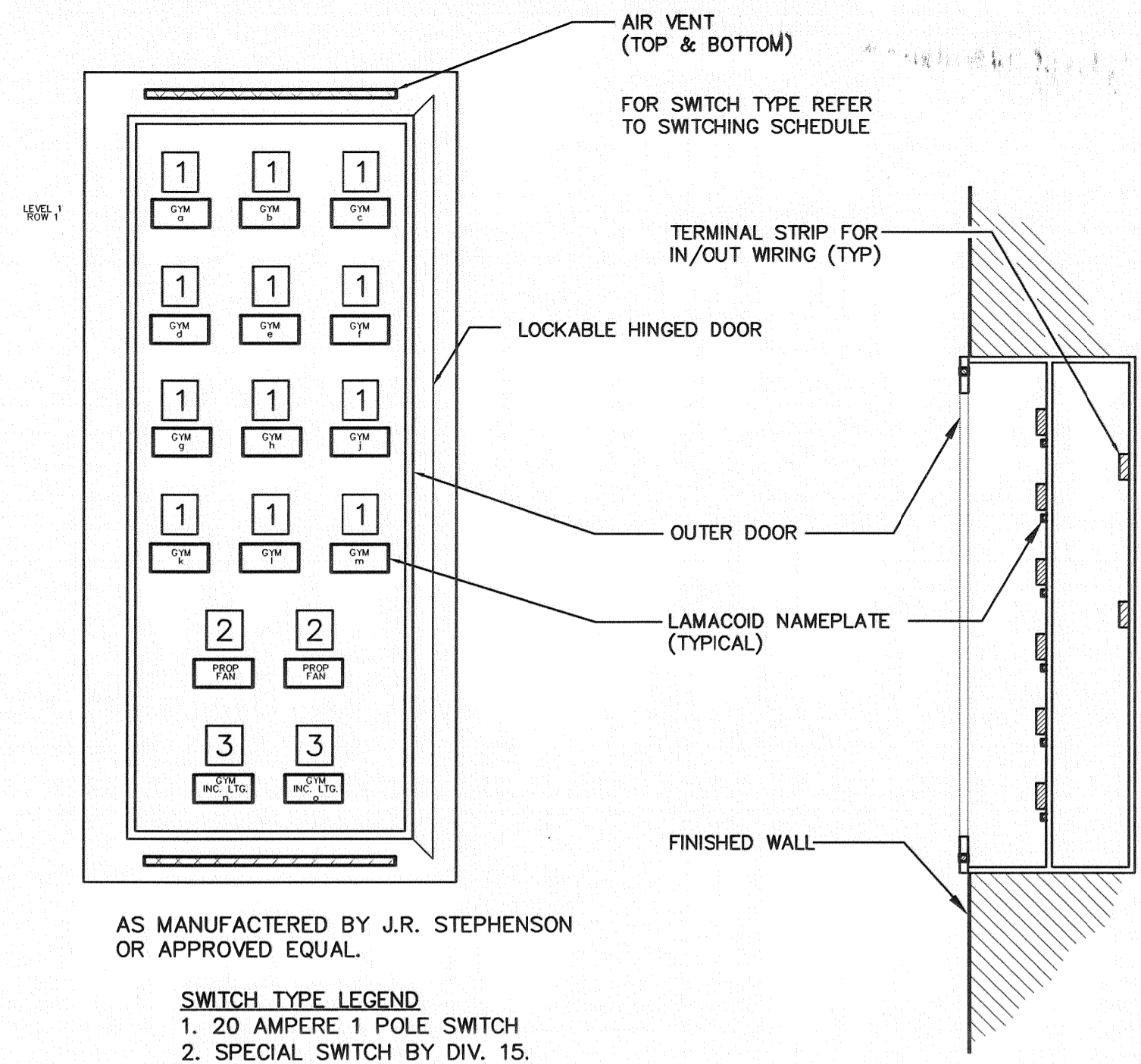


1 MAIN FLOOR - LIGHTING LAYOUT
SCALE: 1:100



2 MAIN FLOOR - POWER & SYSTEMS LAYOUT
SCALE: 1:100



AS MANUFACTURED BY J.R. STEPHENSON OR APPROVED EQUAL.

SWITCH TYPE LEGEND
1. 20 AMPERE 1 POLE SWITCH
2. SPECIAL SWITCH BY DIV. 15.
3. 1000 WATT DIMMER

3 GYM SWITCHING PANEL DETAIL
SCALE: N.T.S.

NOTES:
1. REFER TO DETAIL 3/E-3.

1 ISSUED FOR TENDER DG 2007.11.13
revisions

This drawing must not be scaled.
The general Contractor must verify all dimensions, datums and levels prior to commencement of work. All errors and omissions must be reported immediately to the Architect.

Variations and modifications to work shown on this drawing shall not be carried out without written permission from the Architect.

This drawing is the exclusive property of the Architect and cannot be reproduced without written permission of the Architect. Reproduction must bear the name of the Architect. Copyright © 2006.

seals

APEGN
Certificate of Authorization
MCW/AGE Consulting
Professional Engineers
No. 589 Expiry: April 30, 2008

E.H. GARFINKEL
REGISTERED PROFESSIONAL ENGINEER

5603
MCW / AGE
Consulting Professional Engineers
A member of the MCW Group of Companies
1821 Wellington Avenue, Suite 215, Winnipeg, MB R2M 0S4
PHONE (204) 775-7900 FAX (204) 775-1119
484 Somerset Street West, Ottawa, Ontario K1R 5J8
740 Nicola Street, Suite 200, Vancouver, B.C. V6C 2C1
156 Front Street West, Suite 600, Toronto, Ontario M5J 2L6

architect
HAROLD FUNK ARCHITECT INC.
4320-55 Donald Street
Winnipeg, Manitoba
Canada
Tel. 204 943 5087
Fax. 204 949 9231
E-mail: funkarch@mts.net

project
**VALOUR COMMUNITY CENTRE
GYMNASIUM ADDITION AND
RENOVATIONS**
715 Telfer St. North, Winnipeg, Manitoba
sheet title
**MAIN FLOOR
ELECTRICAL LAYOUT**

project no. 5603
scale : AS SHOWN
drawn by: AJ
approved by: KEI
date November 9, 2007

Sheet no.
E-4