

LEGEND	
	GATE VALVE
	GLOBE VALVE
	CHECK VALVE
	PUMP
	UNION
	NEW DOMESTIC WATER LINE

**GENERAL NOTES:**

1. THIS DRAWING IS DIAGRAMMATIC ONLY. FINAL PIPE ROUTING TO BE COORDINATED ON SITE BY GENERAL CONTRACTOR AND SITE SERVICES.
2. THIS DRAWING IS DIAGRAMMATIC ONLY. ALL FINAL RELOCATION OF WADING POOL EQUIPMENT TO BE COORDINATED ON SITE BY MECHANICAL CONTRACTOR, SITE SERVICES CONTRACTOR UNDER THE DIRECTION OF CITY OF WINNIPEG REPRESENTATIVE.

**DRAWING NOTES:**

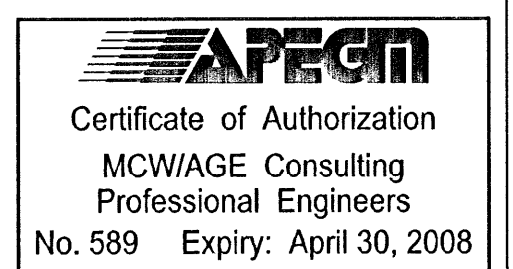
1. NEW 50# DOMESTIC WATER LINE TO CONNECT TO EXISTING WADING POOL FILLING SYSTEM. MECHANICAL CONTRACTOR, SITE SERVICES, AND OWNER REPRESENTATIVE TO COORDINATE EXACT TIE-IN LOCATION ON SITE.
2. NEW WATER METER IN PUMP HOUSE.
3. APPROXIMATE LOCATION OF NEW PUMP HOUSE REFER TO ARCHITECTURAL SITE PLAN FOR FINAL LOCATION AND SIZE.
4. NEW PUMP (P-1). SEE DRAWING M-4 FOR DETAILS.
5. RELOCATED EXISTING WADING POOL MAINTENANCE ACCESS PORTS. FINAL LOCATION TO BE COORDINATED ON SITE BY MECHANICAL CONTRACTOR, SITE SERVICES CONTRACTOR AND CITY OF WINNIPEG REPRESENTATIVE TO PROVIDE A FULL FUNCTIONAL SYSTEM BY CODE AUTHORITY HAVING JURISDICTION.
6. EXISTING WADING POOL MAINTENANCE ACCESS PORT TO REMAIN.
7. REFER TO DRAWING #J3/M-0 FOR PUMP HOUSE LAYOUT.

3 ISSUED FOR TENDER SR 2007.11.14  
 2 ISSUED FOR 100% REVIEW DG 2007.07.06  
 1 ISSUED FOR 99% REVIEW DG 2007.06.29  
 revisions

This drawing must not be scaled.  
 The general Contractor must verify all dimensions, details and levels prior to commencement of work. All errors and omissions must be reported immediately to the Architect.

Variations and modifications to work shown on this drawing shall not be carried out without written permission from the Architect.  
 This drawing is the exclusive property of the Architect and cannot be reproduced without written permission of the Architect. Reproduction must bear the name of the Architect. Copyright © 2006.

seals



engineers



5603

architect  
**HAROLD FUNK ARCHITECT INC.**  
 #320-55 Donald Street  
 Winnipeg, Manitoba R3C 1J8  
 Tel. 204 943 5897  
 Fax. 204 949 9231  
 E-mail: funkarc@atcs.net

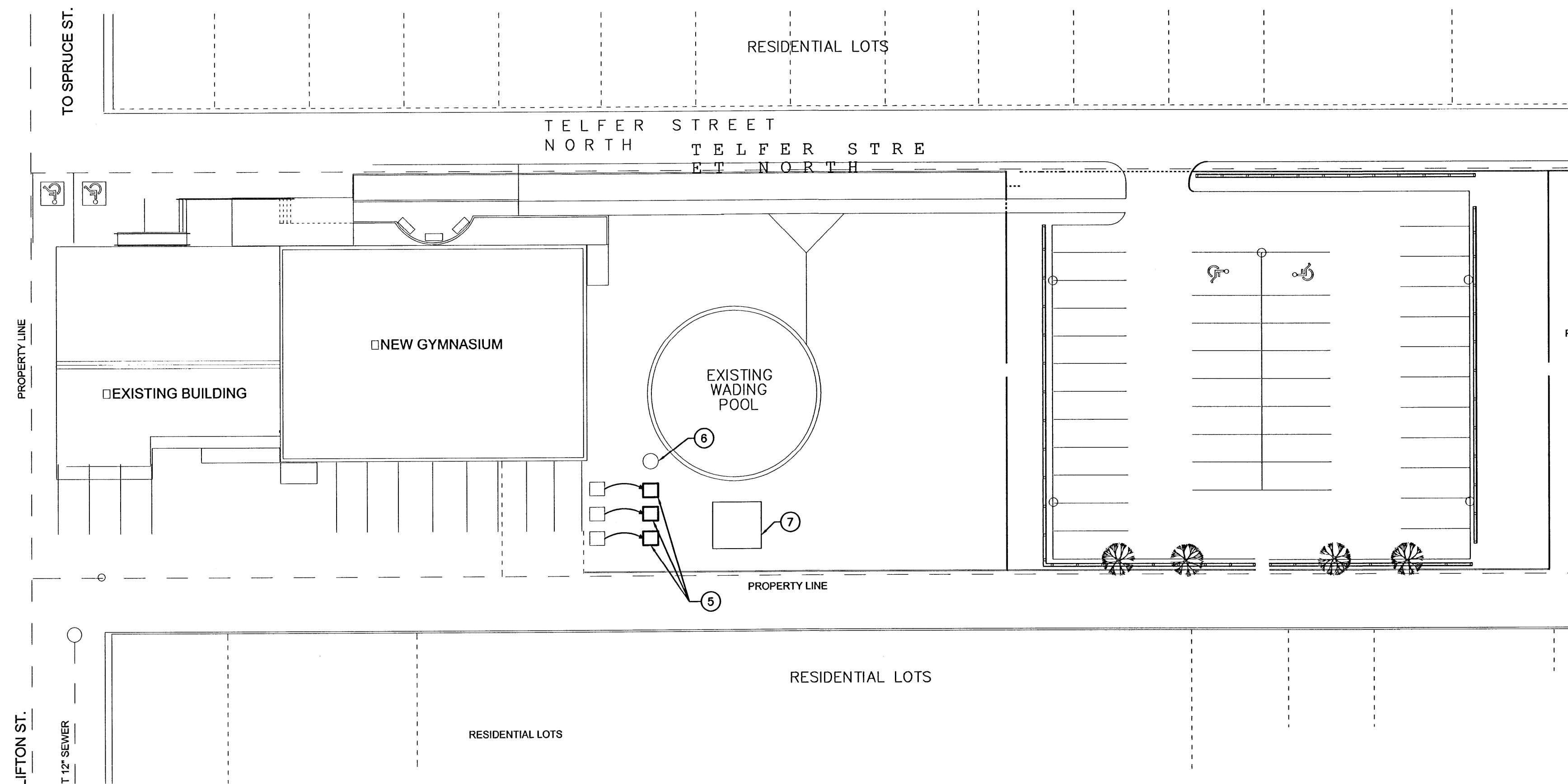
project  
**VALOUR COMMUNITY CENTRE GYMNASIUM ADDITION AND REVOLUTIONS**  
 715 Telfer St. North, Winnipeg, Manitoba

sheet title  
**SITE PLAN MECHANICAL LAYOUT**

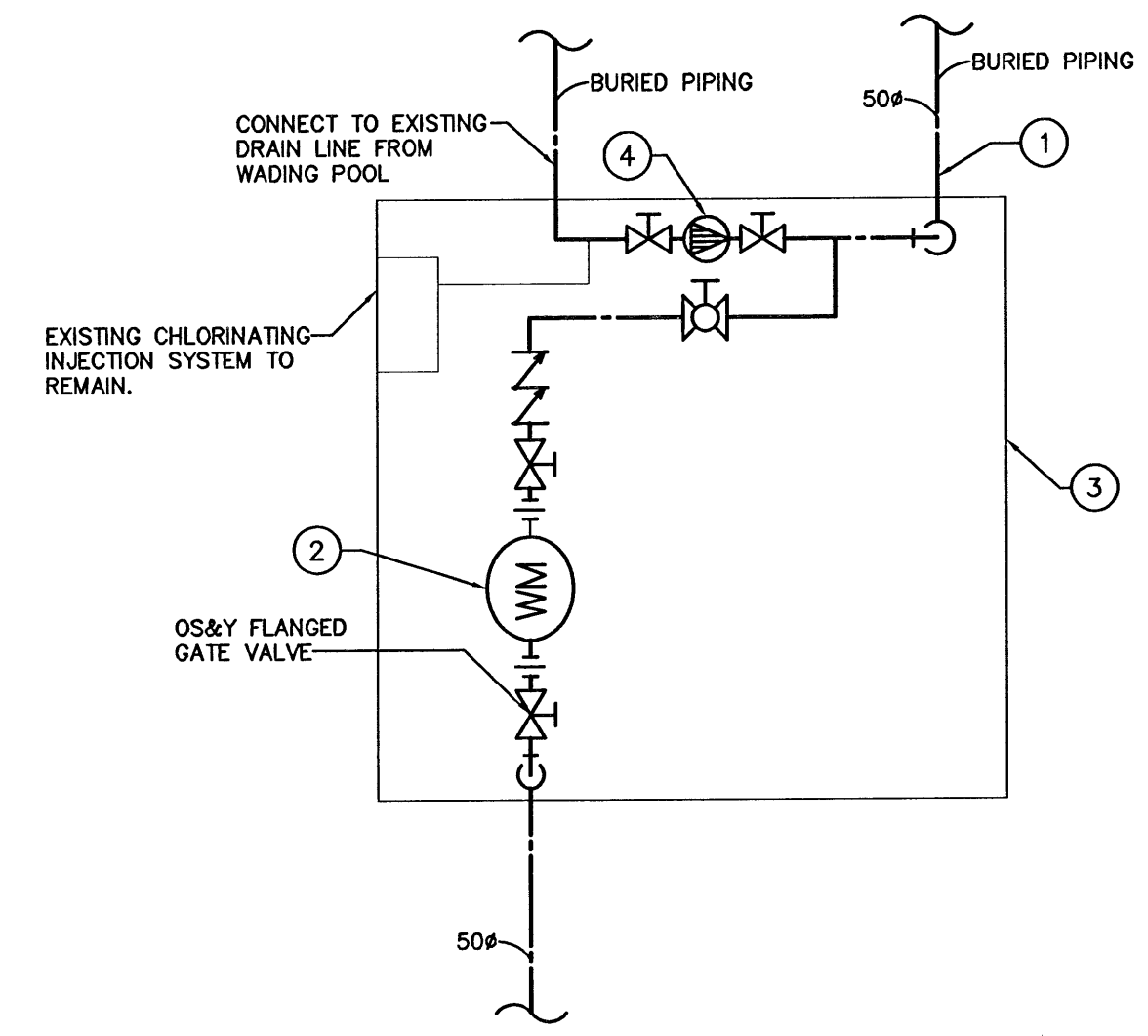
project no. 5603  
 scale :AS SHOWN  
 drawn by: RK  
 approved by: SR  
 date JULY 6, 2007

sheet no.

**M-0**



**1 SITE PLAN**  
 SCALE: 1:300



**2 PUMP HOUSE LAYOUT**  
 SCALE: N.T.S.

project no. 5603  
 scale :AS SHOWN  
 drawn by: RK  
 approved by: SR  
 date JULY 6, 2007