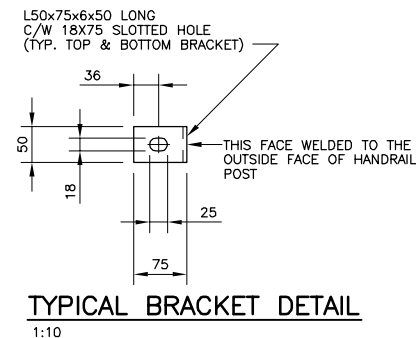
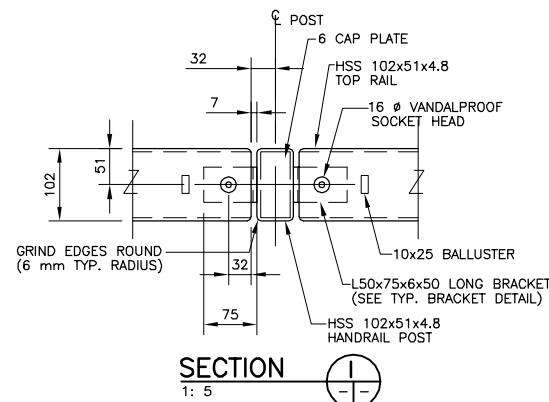
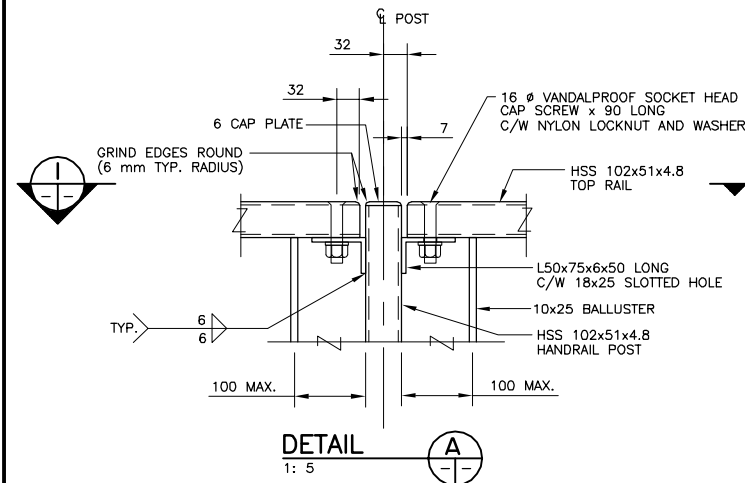
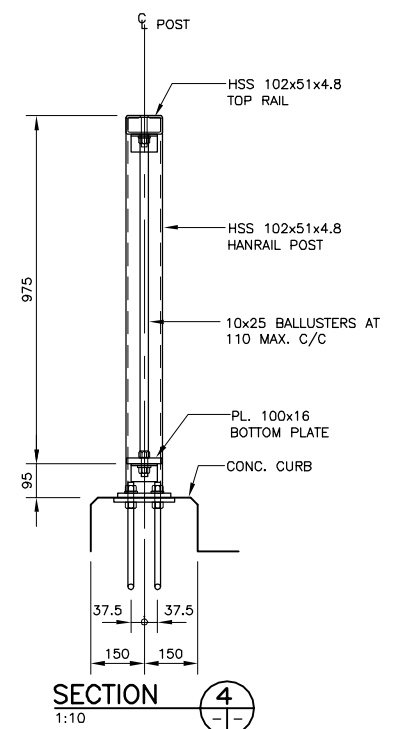
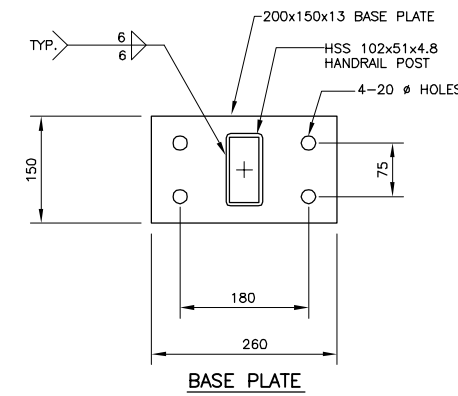
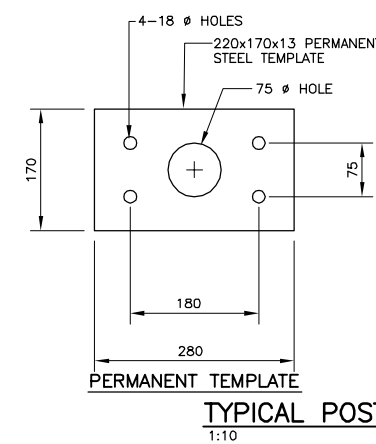
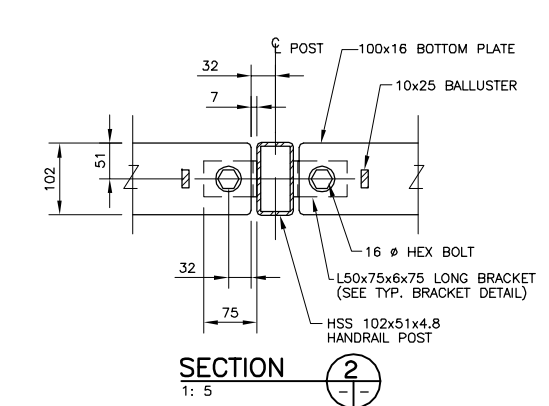
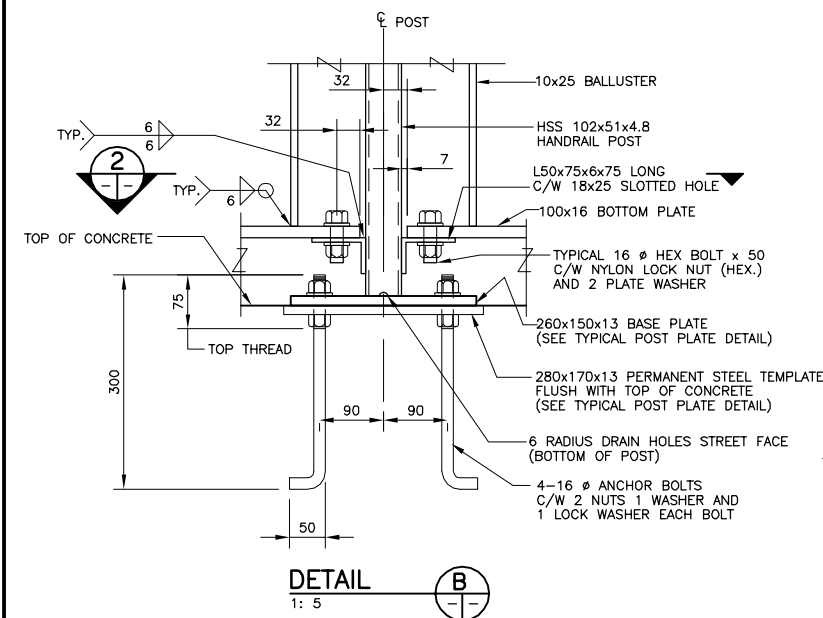


HANDRAIL PANEL SCHEDULE							
PANEL TYPE	NO. REQ'D.	A	B	C	D	E	F
H1	71	2400	2336	20	108	88	88
COMPONENTS (PER PANEL)							
<ul style="list-style-type: none"> <li>HSS 102x51x4.8 TOP RAIL</li> <li>PLATE 100x16 BOTTOM RAIL</li> <li>10x25 BALLUSTERS (SEE C VALUE FOR NO. REQ'D.)</li> </ul>							

HANDRAIL POST SCHEDULE		
POST TYPE	NO. REQ'D.	COMPONENTS (PER POST)
P1	68	<b>INTERMEDIATE POST</b> <ul style="list-style-type: none"> <li>HSS 102x51x4.8</li> <li>2-L50x75x6 TOP BRACKET C/W 1-16 Ø VANDALPROOF SOCKET HEAD CAP SCREWS</li> <li>1-NYLON LOCK NUT</li> <li>1-PLATE WASHER</li> <li>EACH ANGLE BRACKET</li> </ul>
P2R	3	<ul style="list-style-type: none"> <li>2-L50x75x6x BOTTOM BRACKET C/W 1-16 Ø HEX BOLT x 50 LG.</li> <li>1-NYLON LOCK NUT (HEX)</li> <li>2-PLATE WASHERS</li> <li>EACH ANGLE BRACKET</li> </ul>
P2L	3	
<b>NOTE:</b> END POST COMPONENT TYPE P2R & P2L REQUIRED-1 ANGLE BRACKET TOP & BOTTOM ON ONE SIDE ONLY.		
<ul style="list-style-type: none"> <li>1-260x150x13 BASE PLATE</li> <li>1-280x170x13 PERMANENT TEMPLATE</li> <li>4-16 Ø ANCHOR BOLTS C/W 2-NUTS AND 1-WASHER</li> </ul>		



**DRAWING REDUCED NOT TO SCALE**



- NOTES:**
- STRUCTURAL STEEL GRADE 300 W EXCEPT HSS GRADE 350 W.
  - BOLTS GRADE A307 OR BETTER
  - ALL MATERIALS HOT-DIP GALVANIZED AFTER FABRICATION.
  - GRIND ALL EXPOSED SHARP EDGES SMOOTH AND ROUNDED.
  - ANCHOR BOLTS GALVANIZED AFTER THREADING AND GALVANIZED NUTS SIZED AS NECESSARY.

B.M. ELEV.	DESIGNED BY	DATE	BY
	NBG		
	DRAWN BY		
	NBG		
	CHECKED BY		
	RAW		
	REVIEWED BY		
	ASD		
2	ISSUED FOR TENDER	05/22/07	MRD
1	ISSUED FOR CITY REVIEW	04/03/07	NBG
NO.	REVISIONS	DATE	BY

DESIGNED BY NBG  
 DRAWN BY NBG  
 CHECKED BY RAW  
 REVIEWED BY ASD  
 HOR. SCALE AS SHOWN  
 VERTICAL  
 DATE APRIL 2007  
 RELEASED FOR CONSTRUCTION  
 ORIGINAL SIGNED BY B. A. NEIRICK  
 DATE

**DILLON CONSULTING**  
 ENGINEER'S SEAL  
 PROVINCE OF MANITOBA  
 ORIGINAL STAMPED BY  
**R.A. WIEBE**  
 05/17/07  
 REGISTERED PROFESSIONAL ENGINEER  
 ENGINEER'S SEAL  
 PROVINCE OF MANITOBA  
 ORIGINAL STAMPED BY  
**A.S. DERAJ**  
 05/17/07  
 REGISTERED PROFESSIONAL ENGINEER

**THE CITY OF WINNIPEG**  
 PUBLIC WORKS DEPARTMENT  
 2007 CAPITAL PROGRAM  
 ANNABELLA STREET UNDERPASS  
 RETAINING WALL REHABILITATION  
 AND ROADWORKS  
 PEDESTRIAN HANDRAIL DETAILS  
 CITY DRAWING NUMBER  
**U223-07-11**  
 SHEET 11 OF 12  
 BID OPP NO.  
**291-2007**