

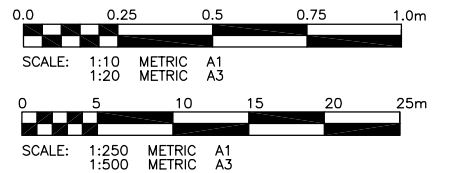
BENCH MARK NOTES

B.M. 35-048
S.W. COR. PORTAGE AVE. & KENNEDY ST., TBLT. IN S. CONC. FOUNDATION OF BLDG. (CLIFFORD'S LADIES WEAR) 0.5m W. & 0.1m BELOW BRICKS OF S.E. COR. OF BLDG. (ELEV=232.247m)

B.M. 35-051
N.E. COR. OSBORNE ST. N. & YORK AVE., TBLT. MARKED NO. 1 MANITOBA LAND SURVEYS, JUNE 21, 1967, NEAR S. EDGE OF 3.65m DIA. CONC. SLAB KNOWN AS SURVEYOR'S CENTENNIAL MONUMENT, 20m E. EDGE OF CONC. SIDEWALK ON E. SIDE OF OSBORNE ST. N., OF FACE OF CURB OF YORK AVE. CONC. PAVEMENT. (ELEV=231.816m)

NOTE:

1. BASELINE STATIONING IS BASED ON A LINE PROJECTED ALONG THE W. PROPERTY LINE OF VAUGHAN ST.
2. STA 1+00 IS THE PROPERTY LINE INTERSECTION AT THE N.W. CORNER OF YORK AVE. AND VAUGHAN ST.
3. ALL ROAD WIDTH MEASUREMENTS ARE BACK TO BACK OF CURB
4. ADJUST MH AND CB RIMS TO NEW GRADES
5. PLANE REHABILITATION FROM STA 3+50 TO STA 3+92.5



NOTE:

FOR LOCATION OF NEW 250 PVC WM
SEE:
CITY OF WINNIPEG
2007 WATERMAIN RENEWAL
CONTRACT 2
BID OPPORTUNITY 267-2007
CITY DRAWING NUMBER D-9139

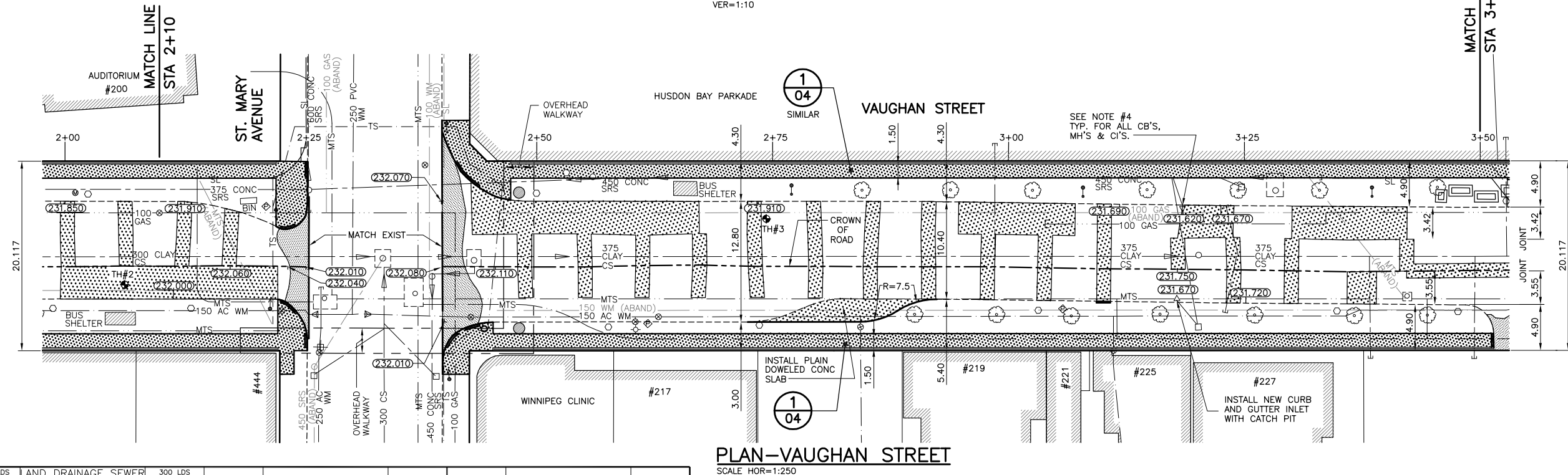
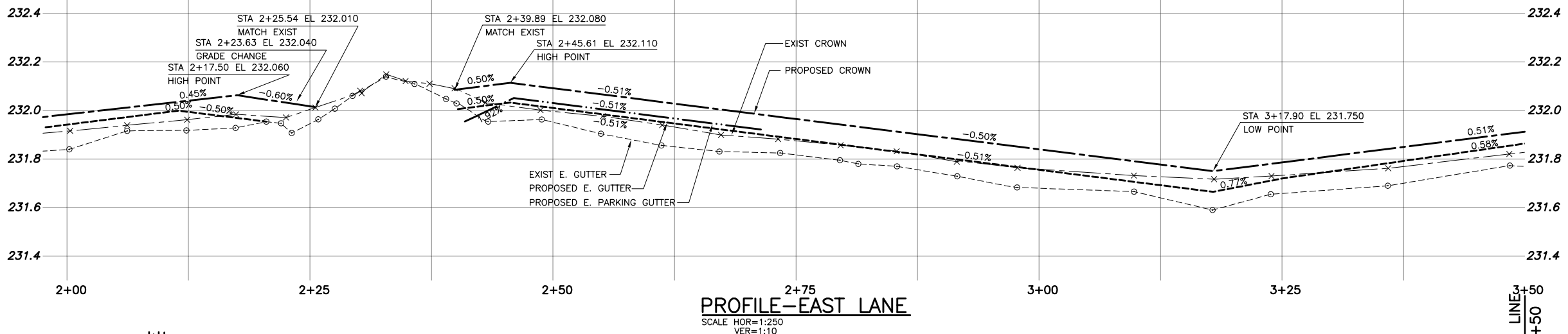
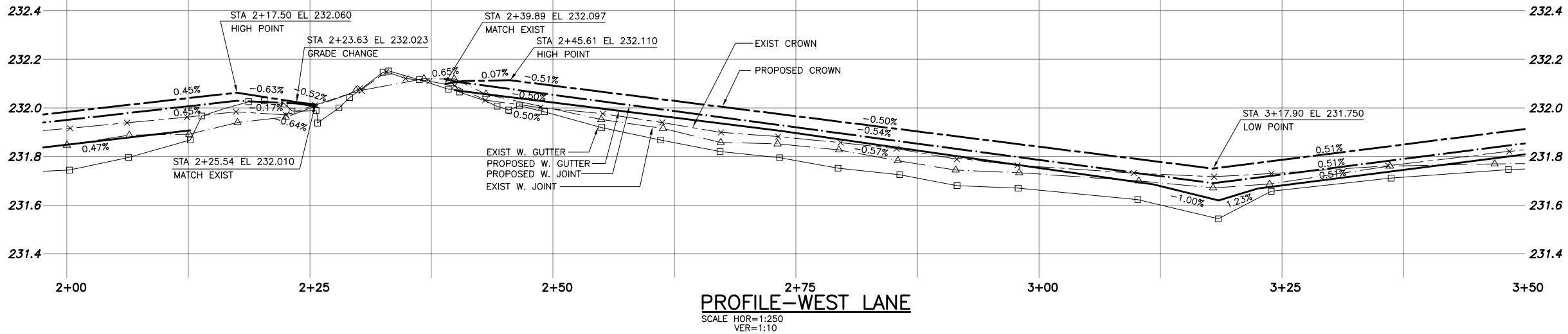


WARNING

IF POWER EQUIPMENT OR EXPLOSIVES ARE TO BE USED FOR EXCAVATION ON THIS PROJECT THE CONTRACTOR MUST:
1) NOTIFY THE GAS COMPANY OF THE PROPOSED LOCATION OF EXCAVATION.
2) TAKE PRECAUTION TO AVOID DAMAGE TO GAS COMPANY INSTALLATIONS.
SEE PROVINCIAL REGULATION 210/72 FOR DETAILS.

METRIC

WHOLE NUMBERS INDICATE MILLIMETRES
DECIMALIZED NUMBERS INDICATE METRES



300 LBS	LAND DRAINAGE SEWER	300 LBS	TEST HOLE		
250 WWS	WASTE WATER SEWER	250 WWS	GUY WIRE		
---	GAS	---	LIGHT STANDARD		
---	HYDRO	---	BACK OF CURB		
---	M.T.S.	---	CONCRETE		
150 WM	WATERMAIN	150 WM	ASPHALT		
+	HYDRANT	+	SIDEWALK		
o	VALVE	o	PROPERTY LINE		
o	MANHOLE	o	SURVEY BAR		
□	CATCH BASIN	□	GEODETIC BENCHMARK		
▽	CURB INLET	▽	ELEVATION		
•	POLES	•			
EXISTING	LEGEND-PLAN	PROPOSED	EXISTING	LEGEND-PROFILE	PROPOSED

LOCATION APPROVED UNDERGROUND STRUCTURES

LOCATIONS OF UNDERGROUND STRUCTURES AS SHOWN ARE BASED ON THE BEST INFORMATION AVAILABLE BUT NO GUARANTEE IS GIVEN THAT ALL EXISTING UTILITIES ARE SHOWN OR THAT THE GIVEN LOCATIONS ARE EXACT. CONFIRMATION OF EXISTENCE AND EXACT LOCATION OF ALL SERVICES MUST BE OBTAINED FROM THE INDIVIDUAL UTILITIES BEFORE PROCEEDING WITH CONSTRUCTION.

B.M. 35-048	ELEV=232.247m	SEE BENCH MARK NOTES FOR DESCRIPTION
B.M. 35-051	ELEV=231.816m	
0	ISSUED FOR TENDER	02/05/07 CR
NO. REVISIONS	DATE	BY

KGS GROUP CONSULTING ENGINEERS & PROJECT MANAGERS
WINNIPEG (204) 896-1209
THUNDER BAY (807) 345-2233

DESIGNED BY PP CHECKED BY CR
DRAWN BY DW APPROVED BY

HOR. SCALE: 1:250
VERTICAL: 1:50

RELEASED FOR CONSTRUCTION: DATE

ENGINEER'S SEAL
ORIGINAL SIGNED BY M.C. ROWBOTHAM
MAY 7, 2007

CONSULTANT DRAWING NO. 06-107-21

THE CITY OF WINNIPEG
PUBLIC WORKS DEPARTMENT
ENGINEERING SERVICES DIVISION

PROJECT TITLE: VAUGHAN STREET CONCRETE REPAIRS & ASPHALT OVERLAY
SHEET 02 OF 04
COMPUTER FILE NAME: VAUGHAN-PLOT
CITY DRAWING NUMBER: P-3281-02

P:\PROJECTS\2006\06-0107-21\MUN\DWGS\VAUGHAN2\DWG\VAUGHAN-PLOT.DWG
PLOT 1:1 (A-1 SHEET)