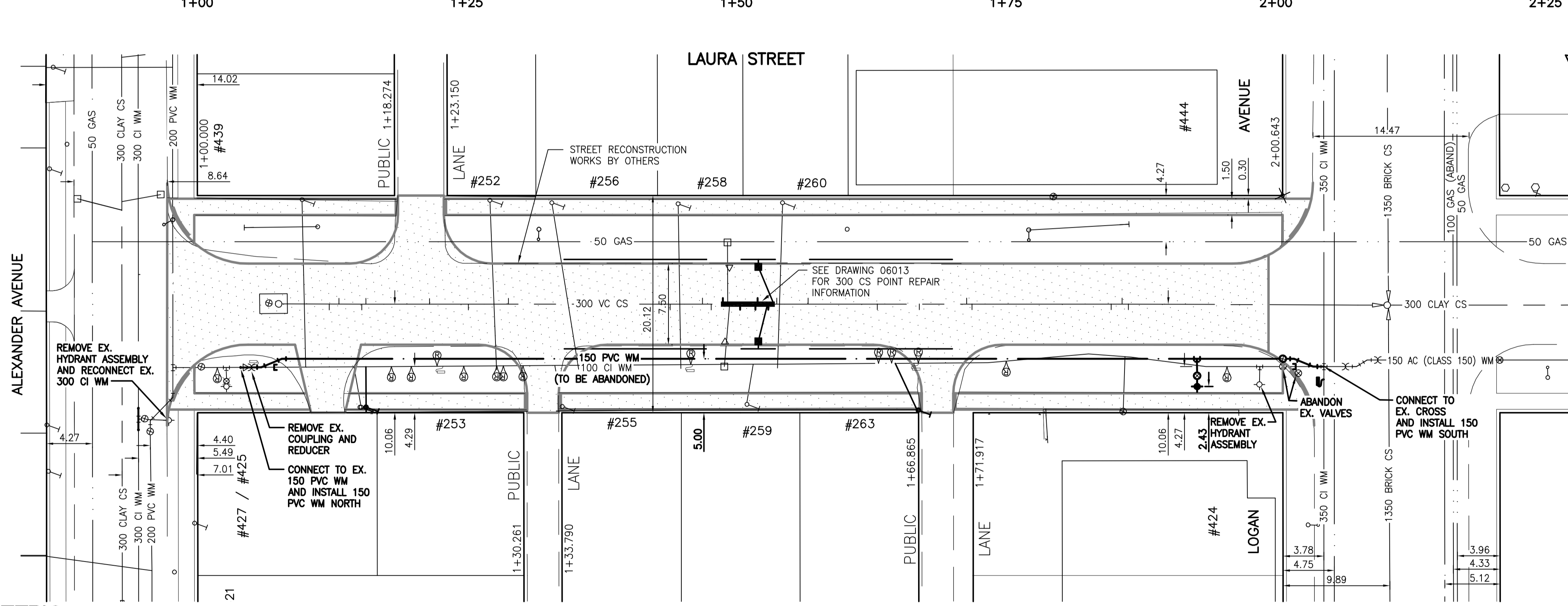


WATER SERVICE INFORMATION

ADDRESS & SERVICE	SIZE (mm) & TYPE (STREET)	STOP COCK SHORT & LONG MEASUREMENT	CORPORATION LOCATION	REMARKS
427/425 ALEXANDER AVE. NO INFO COMMERCIAL	NO INFO	NO INFO	NO INFO	DOUBLE SERVICE WITH 253 LAURA
429 ALEXANDER AVENUE NO INFO RESIDENTIAL	NO INFO	NO INFO	NO INFO	
252 LAURA STREET RESIDENTIAL	NO INFO	NO INFO	NO INFO	
253 LAURA STREET RESIDENTIAL	20 COPPER	6.9m SSL HSE 15.2m NNL ALEXANDER	0.9m S OF SC	DOUBLE SERVICE WITH 427/427 ALEXANDER
255 LAURA STREET RESIDENTIAL	20 COPPER	OPP SL OF HSE 34.1m NNL ALEXANDER	0.9m S OF SC	
256 LAURA STREET RESIDENTIAL	20 COPPER	0.6m SSL HSE 35.4m NNL ALEXANDER	OPP SC	
258 LAURA STREET RESIDENTIAL	20 COPPER	OPP SL HSE 44.6m NNL ALEXANDER	OPP SC	
259 LAURA STREET RESIDENTIAL	20 COPPER	2.1m NNL HSE 31.2m NNL ALEXANDER	OPP SC	
260 LAURA STREET RESIDENTIAL	20 COPPER	3.2m SSL HSE 44.3m SSL LOGAN	0.6m S OF SC	
263 LAURA STREET RESIDENTIAL	12 LEAD	0.3m NNL HSE 33.8m SSL LOGAN	2.4m N SC	
424 LOGAN AVENUE COMMERCIAL	NO INFO	NO INFO	NO INFO	

RENEW SERVICE
* ALL OTHERS TO BE RECONNECTED



WARNING

IF POWER EQUIPMENT OR EXPLOSIVES ARE TO BE USED FOR EXCAVATION ON THIS PROJECT THE CONTRACTOR MUST:
 1) NOTIFY THE GAS COMPANY OF THE PROPOSED LOCATION OF EXCAVATION.
 2) TAKE PRECAUTION TO AVOID DAMAGE TO GAS COMPANY INSTALLATIONS.
 SEE PROVINCIAL REGULATION 140/92 FOR DETAILS

METRIC
 WHOLE NUMBERS INDICATE MILLIMETRES
 DECIMALIZED NUMBERS INDICATE METRES

BENCH MARK: W. side Ellen St. btwn. Logan Ave. & Henry Ave., tbit. in E. conc foundation No. 294 Ellen St., 2.1m N. & 1.7m below brick of most S. eiy. cor. of bldg.

BID OPPORTUNITY 312-2007

APEGM
 Certificate of Authorization
 Stantec Consulting Ltd.
 No. 1301 Expiry: April 30, 2007

EXISTING	LEGEND-PLAN	PROPOSED	EXISTING	LEGEND-PLAN	PROPOSED	EXISTING	LEGEND-PROFILE	PROPOSED
150 WM	WATERMAIN	150 WM	HYDRO	M.T.S.	150 WM	WATERMAIN	150 WM	HYDRANT VALVE
300 LDS	LAND DRAINAGE SEWER	300 LDS	CONCRETE	300 LDS	LAND DRAINAGE SEWER	300 LDS	300 LDS	LAND DRAINAGE SEWER
250 WWS	WASTE WATER SEWER	250 WWS	ASPHALT	250 WWS	WASTE WATER SEWER	250 WWS	250 WWS	WASTE WATER SEWER
○	MANHOLE	●	PROPERTY LINE	○	NORTH OR WEST GUTTER	○	○	SOUTH OR EAST GUTTER
□	CATCH BASIN	⊕	SURVEY BAR	○	NORTH OR WEST P	○	○	SOUTH OR EAST P
▽	CURB INLET	▽	DITCH	○	NORTH OR WEST DITCH	○	○	NORTH OR WEST DITCH
+	JUNCTIONS	+	ELEVATION	○	SOUTH OR EAST DITCH	○	○	SOUTH OR EAST DITCH
+	CULVERT	+	SIDEWALK RAMP	○	SOUTH OR EAST DITCH	○	○	SOUTH OR EAST DITCH
+	GAS	+		○		○	○	

LOCATION APPROVED UNDERGROUND STRUCTURES

SUPV. U/G STRUCTURES COMMITTEE DATE

NOTE:
 LOCATION OF UNDERGROUND STRUCTURES AS SHOWN ARE BASED ON THE BEST INFORMATION AVAILABLE BUT NO GUARANTEE IS GIVEN THAT ALL EXISTING UTILITIES ARE SHOWN OR THAT THE GIVEN LOCATIONS ARE EXACT. CONFIRMATION OF EXISTENCE AND EXACT LOCATION OF ALL SERVICES MUST BE OBTAINED FROM THE INDIVIDUAL UTILITIES BEFORE PROCEEDING WITH CONSTRUCTION.

NO.	REVISIONS	DATE	BY

Stantec Consulting Ltd.
 905 Waverley Street, Winnipeg, Manitoba
 Tel 204-489-5900 Fax 204-453-9012

DESIGNED BY: J.K.H. CHECKED BY: W.B.
 DRAWN BY: J.K.H. APPROVED BY: H.A.K.

HOR. SCALE: 1:250
 VERTICAL: 1:50

RELEASED FOR CONSTRUCTION: DATE

ENGINEER'S SEAL
 ORIGINAL SEALED BY
 H.A. KATZ
 P. ENG.
 07.04.27

CONSULTANT DRAWING NO.
C-206

THE CITY OF WINNIPEG
 WATER AND WASTE DEPARTMENT

2007 WATERMAIN RENEWALS, SEWER RENEWALS, AND EXTERNAL POINT REPAIRS - CONTRACT 8

LAURA STREET
 ALEXANDER AVENUE TO LOGAN AVENUE
 150 WATERMAIN RENEWAL

SHEET 5 OF 11
 CAD FILE DRAWING NUMBER 09700C-205685.dwg
 CITY DRAWING NUMBER D-9165