

- NOTES:**
1. STATIONING IN CENTER OF CORYDON WESTBOUND LANES UNLESS OTHERWISE NOTED
  2. EAST PROPERTY LINE OF MONTROSE STREET = STA 16+02.797
  3. ALL MEASUREMENTS TO BACK OF CURB
  4. ADJUST MH AND CB RIMS TO NEW GRADES
  5. PLUG SUBDRAINS AT TERMINAL ENDS
  6. PLANE EXISTING ASPHALT PAVEMENT FROM STA 17+26.5 THROUGH STA 19+08.3
  7. CONSTRUCT MH AND CB ISOLATIONS IN ACCORDANCE WITH SD-228C

**WARNING**

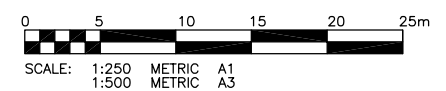
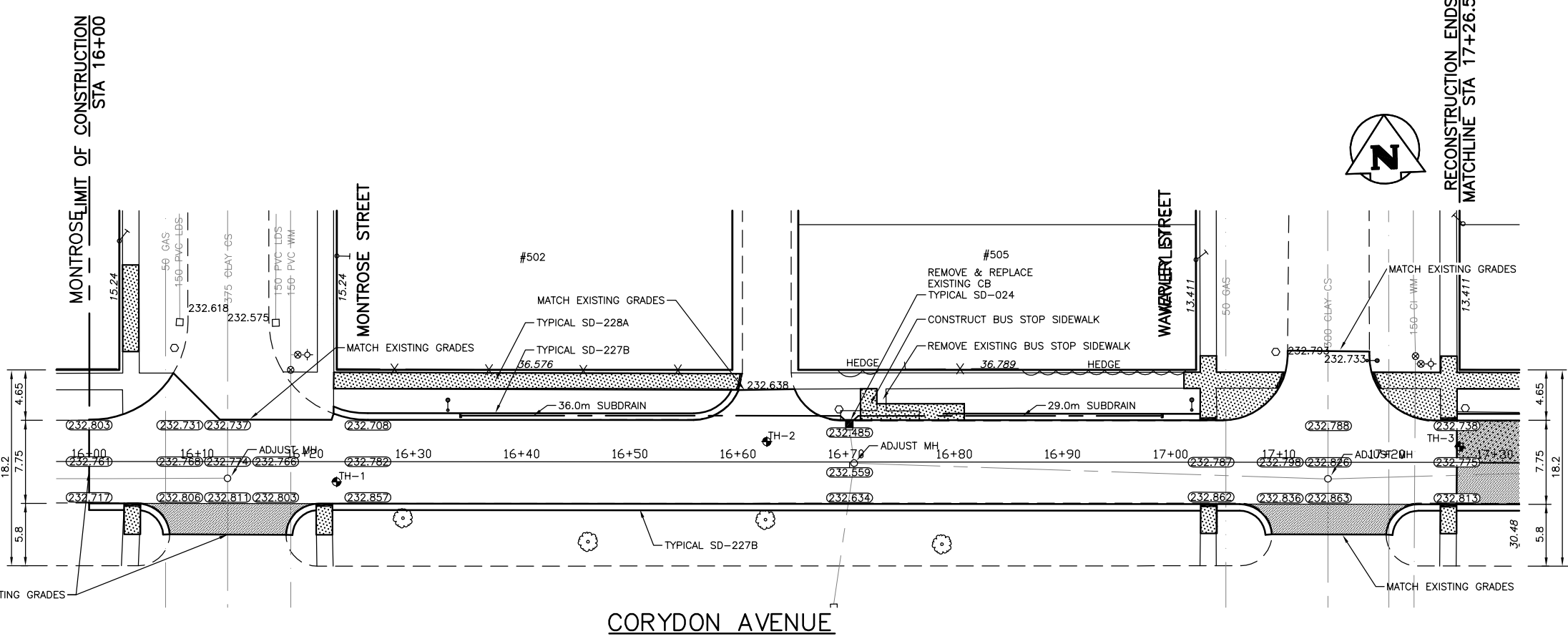
IF POWER EQUIPMENT OR EXPLOSIVES ARE TO BE USED FOR EXCAVATION ON THIS PROJECT THE CONTRACTOR MUST:  
 1) NOTIFY THE GAS COMPANY OF THE PROPOSED LOCATION OF EXCAVATION.  
 2) TAKE PRECAUTION TO AVOID DAMAGE TO GAS COMPANY INSTALLATIONS.  
 SEE PROVINCIAL REGULATION 210/72 FOR DETAILS.

**METRIC**

WHOLE NUMBERS INDICATE MILLIMETRES  
 DECIMALIZED NUMBERS INDICATE METRES

**GEODETIC MONUMENT PROTECTION**

CONTACT WINNIPEG GEOMATICS BRANCH A MINIMUM OF 3 WORKING DAYS PRIOR TO CONSTRUCTION.



**APEGM**  
 Certificate of Authorization  
 KGS Group  
 No. 245 Expiry: April 30, 2007

150 WM	WATERMAIN	150 WM	CONCRETE	X-X	Q PROFILE
300 LDS	HYDRANT	300 LDS	ASPHALT	□-□	NORTH/WEST GUTTER
250 WWS	VALVE	250 WWS	PLANNING	○-○	SOUTH/EAST GUTTER
	LAND DRAINAGE SEWER		SIDEWALK		
	WASTE WATER SEWER		CURB RAMPS		
	MANHOLE		PROPERTY LINE		
	CATCH BASIN		SURVEY BAR		
	CURB INLET		ELEVATION		
	HYDRO		CURB STOP		
	M.T.S.		HYDRO POLE		
	GAS		STREET LIGHT		
EXISTING	LEGEND-PLAN	PROPOSED	EXISTING	LEGEND-PROFILE	PROPOSED

**LOCATION APPROVED UNDERGROUND STRUCTURES**

SUPV. U/G STRUCTURES COMMITTEE DATE

NOTE:  
 LOCATION OF UNDERGROUND STRUCTURES AS SHOWN ARE BASED ON THE BEST INFORMATION AVAILABLE BUT NO GUARANTEE IS GIVEN THAT ALL EXISTING UTILITIES ARE SHOWN OR THAT THE GIVEN LOCATIONS ARE EXACT. CONFIRMATION OF EXISTENCE AND EXACT LOCATION OF ALL SERVICES MUST BE OBTAINED FROM THE INDIVIDUAL UTILITIES BEFORE PROCEEDING WITH CONSTRUCTION.

B.M. 52-014 S.E. COR. CORYDON AVE. & CHAMBERGE ST. 18.1E IN MOST N.W. COR. FOUNDATION OF ST. MARK LUTHERAN CHURCH NO. 800 CHAMBERGE ST. 1.5M N. & 0.1M BELOW BROOK OF MOST N. ELY. COR. OF CHURCH.

**KGS GROUP CONSULTING ENGINEERS & PROJECT MANAGERS**  
 WINNIPEG (204) 896-1209  
 THUNDER BAY (807) 345-2233

DESIGNED BY: JDF  
 CHECKED BY: RJH  
 DRAWN BY: GEL  
 APPROVED BY:  
 HOR. SCALE: 1:250  
 VERTICAL: 1:50  
 RELEASED FOR CONSTRUCTION:  
 DATE: 13/03/07

**THE CITY OF WINNIPEG PUBLIC WORKS DEPARTMENT ENGINEERING SERVICES DIVISION**

PROJECT TITLE: CORYDON AVENUE WESTBOUND PAVEMENT RECONSTRUCTION

Winnipeg

ENGINEER'S SEAL: M.C. ROWBOTHAM Member 22876

CONSULTANT DRAWING NO. 06-107-20\_03

SHEET 03 OF 05  
 COMPUTER FILE NAME: CORYDON-PLOT.DWG  
 CITY DRAWING NUMBER: P-3279-03

STA 16+00 TO STA 17+26.5

P:\Projects\2006\06-107-20\_Mun\Draws\CORYDON.dwg CORYDON-PLT.DWG - Tab: SHEET03 Plotted By: JFriesen 04/17/2007 [Tue 2:56pm]