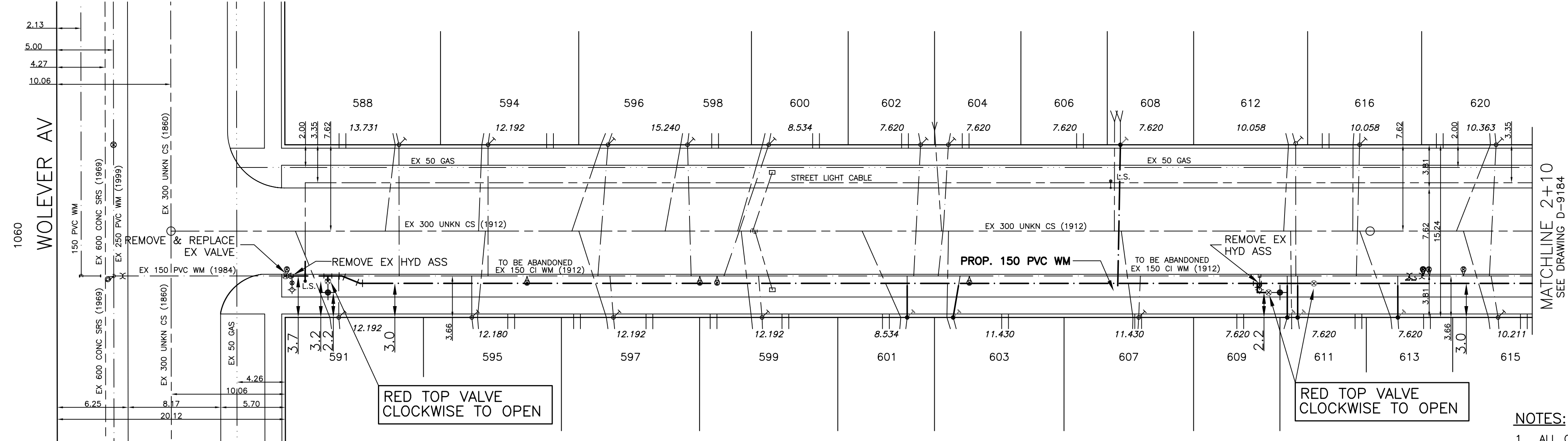
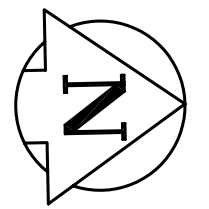


CHAINAGE ALONG EAST PROPERTY LINE OF GARFIELD STREET
GARFIELD STREET NORTH



* SERVICES TO BE RENEWED



APEGM
Certificate of Authorization
SEG Engineering Inc.
No. 252 Expiry: April 30, 2008

- NOTES:**
1. ALL GATE VALVES ARE TO BE CLOCKWISE TO OPEN WITH A RED OPERATING NUT.
 2. WATERMAIN TO BE INSTALLED BY TRENCHLESS METHODS.
 3. BACKFILL IS CLASS 5 WITHIN BOULEVARD AND CLASS 3 WHEN WITHIN PAVEMENT/SIDEWALK OR WHEN WITHIN 1.0m OF PAVEMENT OR SIDEWALK.
 4. WATER SERVICES ARE 19mm UNLESS OTHERWISE NOTED.
 5. MINIMUM COVER TO TOP OF WATERMAIN SHALL BE 2.4m.
 6. LOCATION OF ALL SERVICES TO BE CONFIRMED IN FIELD.
 7. EXPOSE EXISTING WATERMAIN TO CONFIRM DEPTH PRIOR TO CONSTRUCTION.
 8. ALL LEAD SERVICES TO BE RENEWED TO PROPERTY LINE.
 9. SERVICES TO BE RENEWED SHALL BE REPLACED FROM WATERMAIN TO PROPERTY LINE. ALL OTHERS TO BE RECONNECTED.

METRIC
WHOLE NUMBERS INDICATE MILLIMETRES
DECIMALIZED NUMBERS INDICATE METRES

—	WATERMAIN	—	REDUCER	—	150mm W.M.	WATERMAIN	150mm W.M.
—	HYDRANT	—	PLUG	—	300mm L.D.S.	VALVE	300mm L.D.S.
—	VALVE	—	TRAFFIC SIGNAL	—	250mm W.W.S.	LAND DRAINAGE SEWER	300mm L.D.S.
—	LAND DRAINAGE SEWER	—	GAS	—	250mm W.W.S.	WASTE WATER SEWER	250mm W.W.S.
—	WASTE WATER SEWER	—	HYDRO	—	—	JUNCTIONS	—
—	MANHOLE	—	M.T.S.	—	—	CULVERT	—
—	CATCH BASIN	—	SURVEY BAR	—	—	—	—
—	CURB INLET	—	CURB STOP	—	—	—	—
—	TEE	—	C.B. LEAD	—	—	—	—
—	BEND	—	LAMP STANDARD	—	—	—	—
—	ANODE	—	PROPOSED	—	—	—	—
—	EXISTING	—	LEGEND - PLAN	—	—	—	—
—	LEGEND - PLAN	—	PROPOSED	—	—	—	—
—	PROPOSED	—	EXISTING	—	—	—	—
—	EXISTING	—	LEGEND - PROFILE	—	—	—	—
—	LEGEND - PROFILE	—	PROPOSED	—	—	—	—
—	PROPOSED	—	EXISTING	—	—	—	—
—	EXISTING	—	LEGEND - PROFILE	—	—	—	—

LOCATION APPROVED
SUPPLY U/G STRUCTURES DATE COMMITTEE

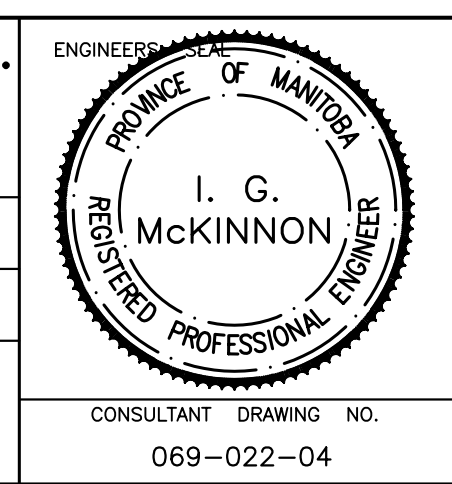
NOTE:
LOCATION OF UNDERGROUND STRUCTURES AS SHOWN ARE BASED ON THE BEST INFORMATION AVAILABLE BUT NO GUARANTEE IS GIVEN THAT ALL EXISTING UTILITIES ARE SHOWN OR THAT THE GIVEN LOCATIONS ARE EXACT. CONFIRMATION OF EXISTENCE AND EXACT LOCATION OF ALL SERVICES MUST BE OBTAINED FROM THE INDIVIDUAL UTILITIES BEFORE PROCEEDING WITH CONSTRUCTION.

B.M. ELEV.	CHBM: 37-011	ELEV: 232.668
NO.	REVISIONS	DATE BY
1	BID OPPORTUNITY 339-2007	MAY 07 DJ

SEG ENGINEERING INC.
200 TACHE AVENUE
WINNIPEG, MANITOBA
(204)-233-2113

DESIGNED BY DJ
DRAWN BY DJ
CHECKED BY SM
APPROVED BY ImcK
RELEASED FOR CONSTRUCTION BY K. ZUREK P. ENG
ORIGINALLY SIGNED BY K. ZUREK P. ENG

DATE MAY 2007
DATE May 25, 2007



THE CITY OF WINNIPEG
WATER AND WASTE DEPARTMENT

2007 CAPITAL WORKS
WATERMAIN RENEWALS
GARFIELD STREET NORTH
WOLEVER AVENUE
TO 110M NORTH OF WOLEVER AVENUE