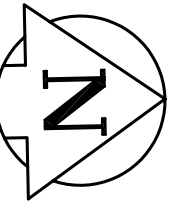
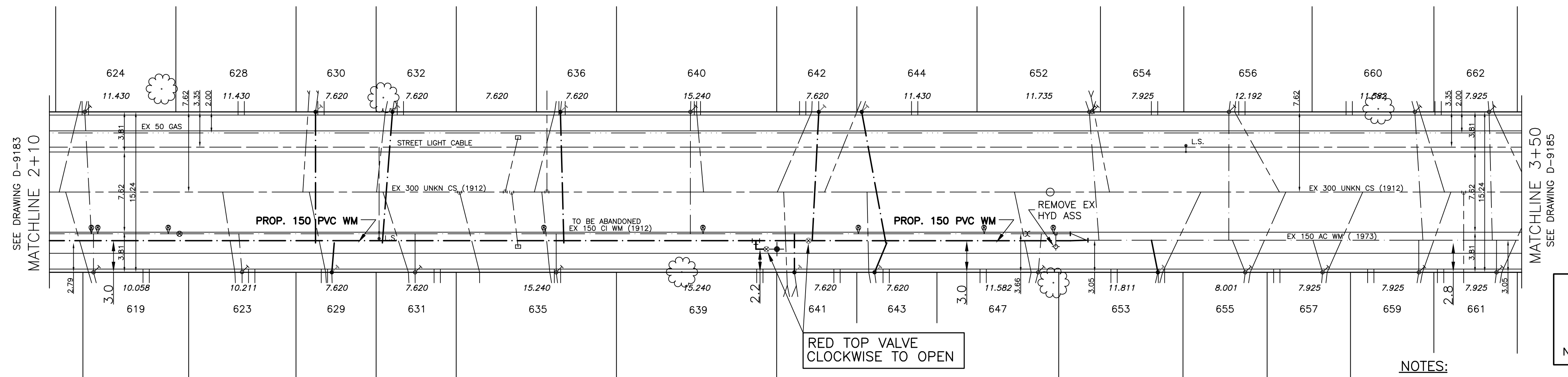


CHAINAGE ALONG EAST PROPERTY LINE OF GARFIELD STREET
GARFIELD STREET NORTH



* SERVICES TO BE RENEWED



NOTES:

1. ALL GATE VALVES ARE TO BE CLOCKWISE TO OPEN WITH A RED OPERATING NUT.
2. WATERMAIN TO BE INSTALLED BY TRENCHLESS METHODS.
3. BACKFILL IS CLASS 5 WITHIN BOULEVARD AND CLASS 3 WHEN WITHIN PAVEMENT/SIDEWALK OR WHEN WITHIN 1.0m OF PAVEMENT OR SIDEWALK.
4. WATER SERVICES ARE 19mm UNLESS OTHERWISE NOTED.
5. MINIMUM COVER TO TOP OF WATERMAIN SHALL BE 2.4m.
6. LOCATION OF ALL SERVICES TO BE CONFIRMED IN FIELD.
7. EXPOSE EXISTING WATERMAIN TO CONFIRM DEPTH PRIOR TO CONSTRUCTION.
8. ALL LEAD SERVICES TO BE RENEWED TO PROPERTY LINE.
9. SERVICES TO BE RENEWED SHALL BE REPLACED FROM WATERMAIN TO PROPERTY LINE. ALL OTHERS TO BE RECONNECTED.

METRIC
WHOLE NUMBERS INDICATE MILLIMETRES
DECIMALIZED NUMBERS INDICATE METRES

---	WATERMAIN	---	REDUCER	---	150mm W.M.	WATERMAIN	150mm W.M.
⊕	HYDRANT	+	PLUG	⊕	300mm L.D.S.	VALVE	300mm L.D.S.
⊕	VALVE	*	TRAFFIC SIGNAL	⊕	250mm W.W.S.	LAND DRAINAGE SEWER	300mm L.D.S.
---	LAND DRAINAGE SEWER	---	GAS	---	---	WASTE WATER SEWER	250mm W.W.S.
---	WASTE WATER SEWER	---	HYDRO	---	---	JUNCTIONS	---
○	MANHOLE	●	M.T.S.	---	---	CULVERT	---
□	CATCH BASIN	⊕	SURVEY BAR	---	---	---	---
△	CURB INLET	▲	CURB STOP	---	---	---	---
⊕	TEE	⊕	C.B. LEAD	---	---	---	---
⊕	BEND	⊕	LAMP STANDARD	---	---	---	---
⊕	ANODE	⊕	---	---	---	---	---
---	EXISTING	---	LEGEND - PLAN	---	---	---	---
---	LEGEND - PLAN	---	PROPOSED	---	---	---	---
---	EXISTING	---	LEGEND - PROFILE	---	---	---	---
---	LEGEND - PROFILE	---	PROPOSED	---	---	---	---

LOCATION APPROVED

SUP.	U/G	STRUCTURES	DATE

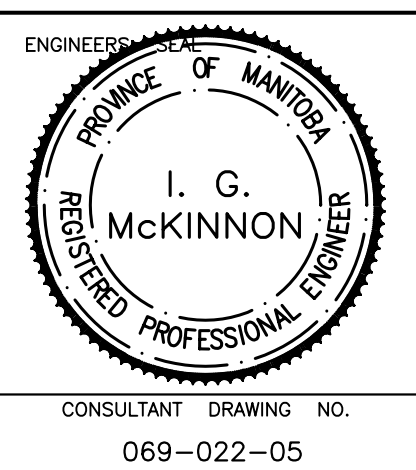
NOTE:
LOCATION OF UNDERGROUND STRUCTURES AS SHOWN ARE BASED ON THE BEST INFORMATION AVAILABLE BUT NO GUARANTEE IS GIVEN THAT ALL EXISTING UTILITIES ARE SHOWN OR THAT THE GIVEN LOCATIONS ARE EXACT. CONFIRMATION OF EXISTENCE AND EXACT LOCATION OF ALL SERVICES MUST BE OBTAINED FROM THE INDIVIDUAL UTILITIES BEFORE PROCEEDING WITH CONSTRUCTION.

B.M. ELEV.	CHBM: 37-011 ELEV 232.668

SEG ENGINEERING INC.

200 TACHE AVENUE
WINNIPEG, MANITOBA
(204)-233-2113

DESIGNED BY	DJ	CHECKED BY	SM
DRAWN BY	DJ	APPROVED BY	IMcK
HOR. SCALE:	1:250	RELEASED FOR CONSTRUCTION	SIGNED BY K. ZUREK P. ENG
VERT. SCALE:	1:50	DATE	May 25, 2007



THE CITY OF WINNIPEG
WATER AND WASTE DEPARTMENT

2007 CAPITAL WORKS
WATERMAIN RENEWALS
GARFIELD STREET NORTH
110M NORTH OF WOLEVER AVENUE
TO 250M NORTH OF WOLEVER AVENUE

SHEET 2 OF 3
CITY DRAWING NO.
D-9184

CONSULTANT DRAWING NO.
069-022-05