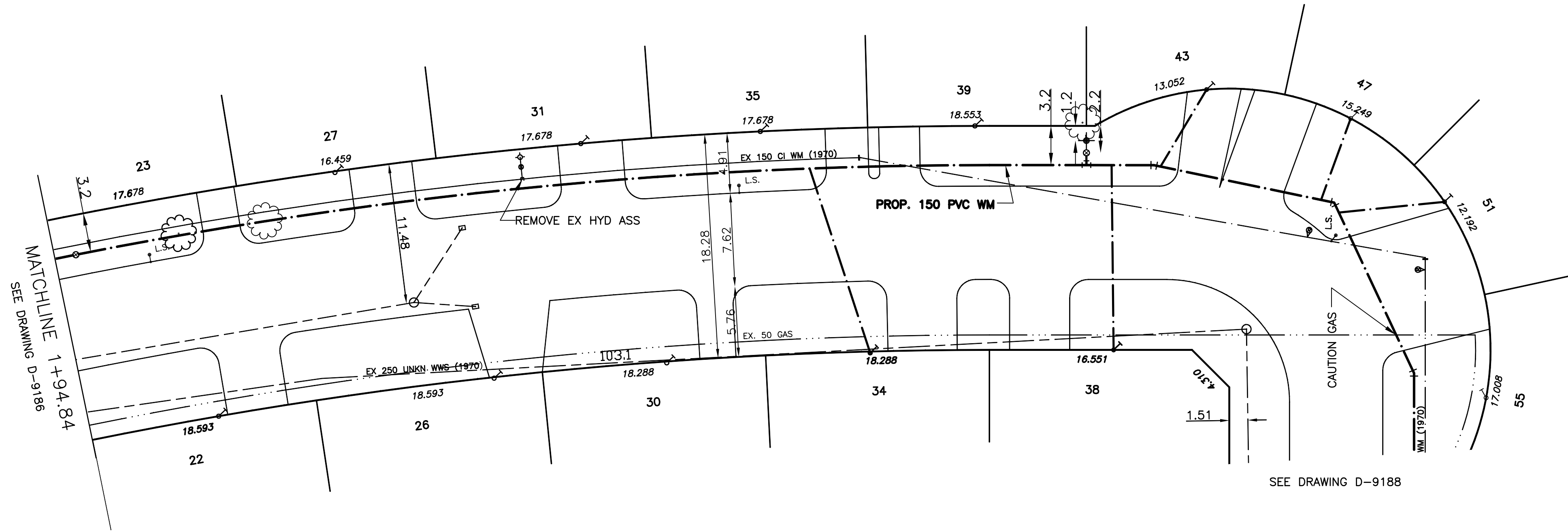
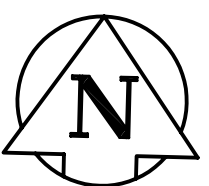


CHAINAGE ALONG NORTH PROPERTY LINE OF TAMARAC BAY
TAMARAC BAY (NORTH LEG)



METRIC
WHOLE NUMBERS INDICATE MILLIMETRES
DECIMALIZED NUMBERS INDICATE METRES



- NOTES:**
- ALL GATE VALVES ARE COUNTER-CLOCKWISE TO OPEN WITH A BLACK OPERATING NUT.
 - WATERMAIN TO BE INSTALLED BY TRENCHLESS METHODS.
 - BACKFILL IS CLASS 5 WITHIN BOULEVARD AND CLASS 3 WHEN WITHIN PAVEMENT/SIDEWALK OR WHEN WITHIN 1.0m OF PAVEMENT OR SIDEWALK.
 - WATER SERVICES ARE 19mm UNLESS OTHERWISE NOTED.
 - MINIMUM COVER TO TOP OF WATERMAIN SHALL BE 2.4m.
 - LOCATION OF ALL SERVICES TO BE CONFIRMED IN FIELD.
 - EXPOSE EXISTING WATERMAIN TO CONFIRM DEPTH PRIOR TO CONSTRUCTION.
 - ALL LEAD SERVICES TO BE RENEWED TO PROPERTY LINE.
 - SERVICES TO BE RENEWED SHALL BE REPLACED FROM WATERMAIN TO PROPERTY LINE. ALL OTHERS TO BE RECONNECTED.

—	WATERMAIN	—	REDUCER	—	150mm W.M.	WATERMAIN	150mm W.M.
⊕	HYDRANT	+	PLUG	⊕	300mm L.D.S.	VALVE	300mm L.D.S.
⊙	VALVE	⊙	TRAFFIC SIGNAL	⊙	250mm W.W.S.	LAND DRAINAGE SEWER	300mm L.D.S.
---	LAND DRAINAGE SEWER	---	GAS	---	250mm W.W.S.	WASTE WATER SEWER	250mm W.W.S.
---	WASTE WATER SEWER	---	HYDRO	---	M.T.S.	JUNCTIONS	---
○	MANHOLE	○	SURVEY BAR	○	CULVERT	---	---
□	CATCH BASIN	□	CURB STOP	□	---	---	---
△	CURB INLET	△	C.B. LEAD	△	---	---	---
⊕	TEE	⊕	---	⊕	---	---	---
⊕	BEND	⊕	---	⊕	---	---	---
⊕	ANODE	⊕	---	⊕	---	---	---
---	EXISTING	---	LEGEND - PLAN	---	PROPOSED	---	PROPOSED

LOCATION APPROVED

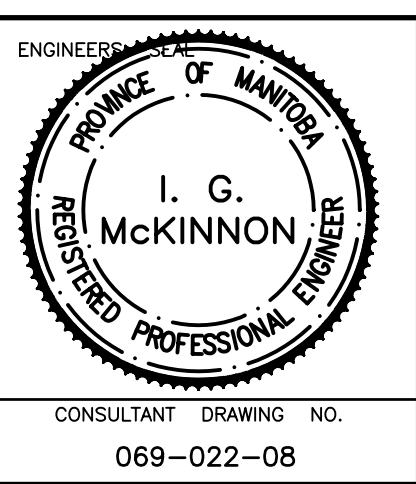
SUPV.	U/G	STRUCTURES	DATE

NOTE:
LOCATION OF UNDERGROUND STRUCTURES AS SHOWN ARE BASED ON THE BEST INFORMATION AVAILABLE BUT NO GUARANTEE IS GIVEN THAT ALL EXISTING UTILITIES ARE SHOWN OR THAT THE GIVEN LOCATIONS ARE EXACT. CONFIRMATION OF EXISTENCE AND EXACT LOCATION OF ALL SERVICES MUST BE OBTAINED FROM THE INDIVIDUAL UTILITIES BEFORE PROCEEDING WITH CONSTRUCTION.

B.M. ELEV.	CHBM: 55-014	ELEV. 233.023
1	BID OPPORTUNITY 339-2007	MAY 07 DJ
NO.	REVISIONS	DATE BY

SEG ENGINEERING INC.
200 TACHE AVENUE
WINNIPEG, MANITOBA
(204)-233-2113

DESIGNED BY	DJ	CHECKED BY	SM
DRAWN BY	DJ	APPROVED BY	ImcK
HOR. SCALE:	1:250	RELEASED FOR CONSTRUCTION	ORIGINALLY SIGNED BY K. ZUREK P. ENG
VERT. SCALE:	1:50	DATE	MAY 25, 2007



THE CITY OF WINNIPEG
WATER AND WASTE DEPARTMENT

2007 CAPITAL WORKS
WATERMAIN RENEWALS
TAMARAC BAY (NORTH LEG)
95M EAST OF LAKEWOOD BOULEVARD TO TAMARAC BAY (EAST LEG)

CONSULTANT DRAWING NO. 069-022-08

SHEET 2 OF 4
CITY DRAWING NO. D-9187