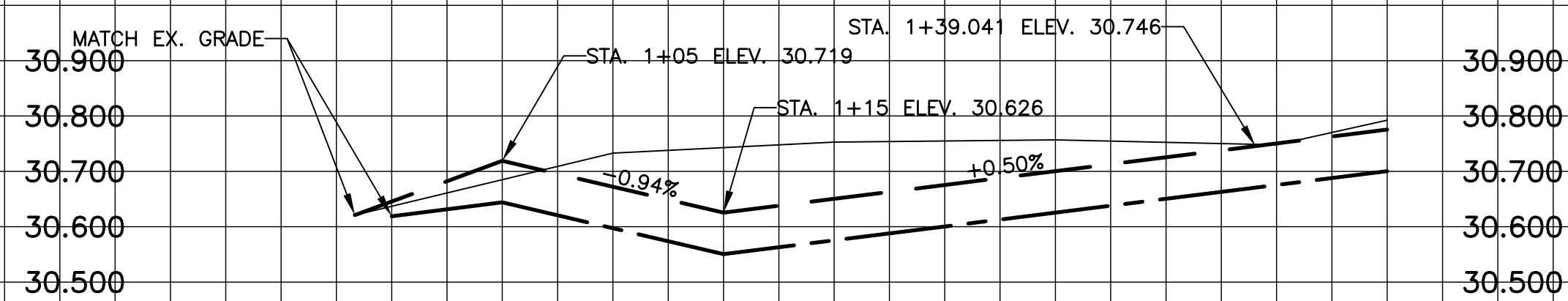


EAST PROFILE



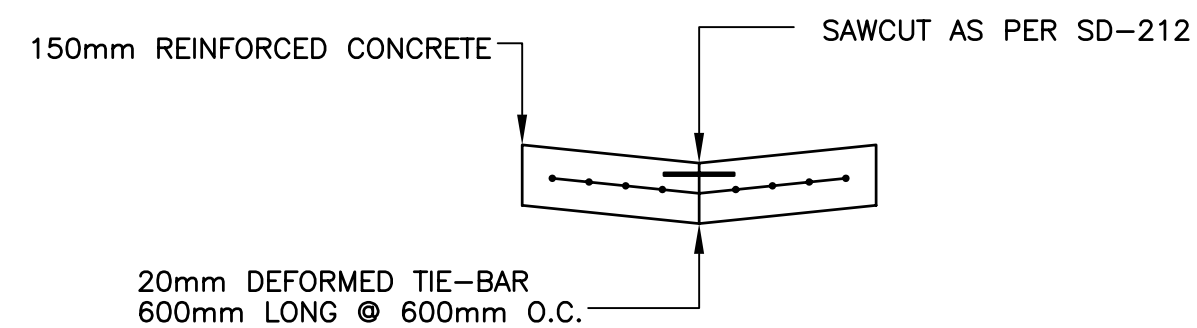
WEST PROFILE

CHAINAGE ALONG CENTER OF ROW

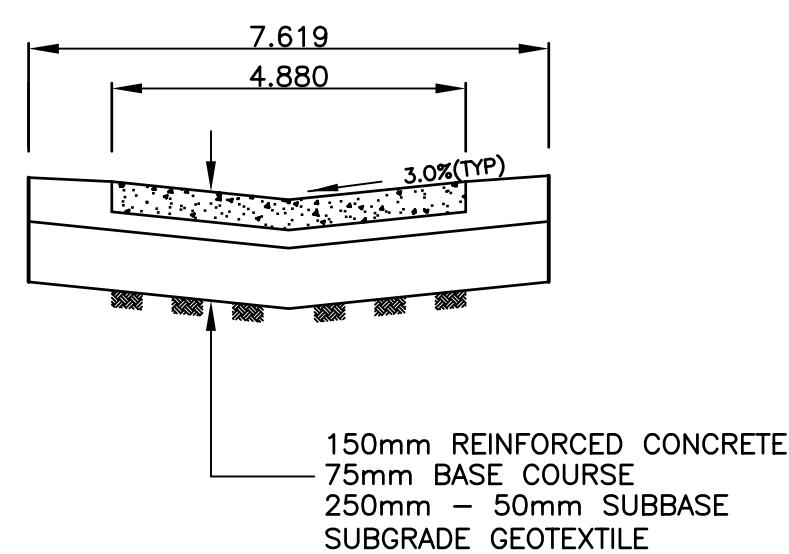
1+00 S. E. GUILBAULT
 1+05 HIGH POINT
 1+09 SUBDRAIN BEGINS
 1+15 LOW POINT
 1+21 SUBDRAIN ENDS
 1+25
 1+39.041 BEND
 1+45 MATCHLINE

NOTES:

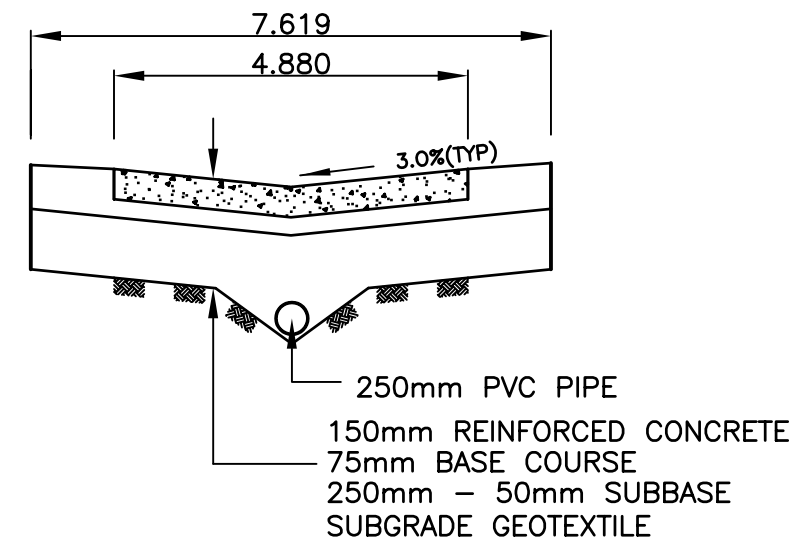
- ISOLATE EXISTING HYDRO POLES AS DIRECTED BY CONTRACT ADMINISTRATOR
- RENEW EXISTING APPROACHES AS DIRECTED BY CONTRACT ADMINISTRATOR
- MODIFIED BARRIER CURB TO BE USED FOR CURB RENEWAL AT RADII.



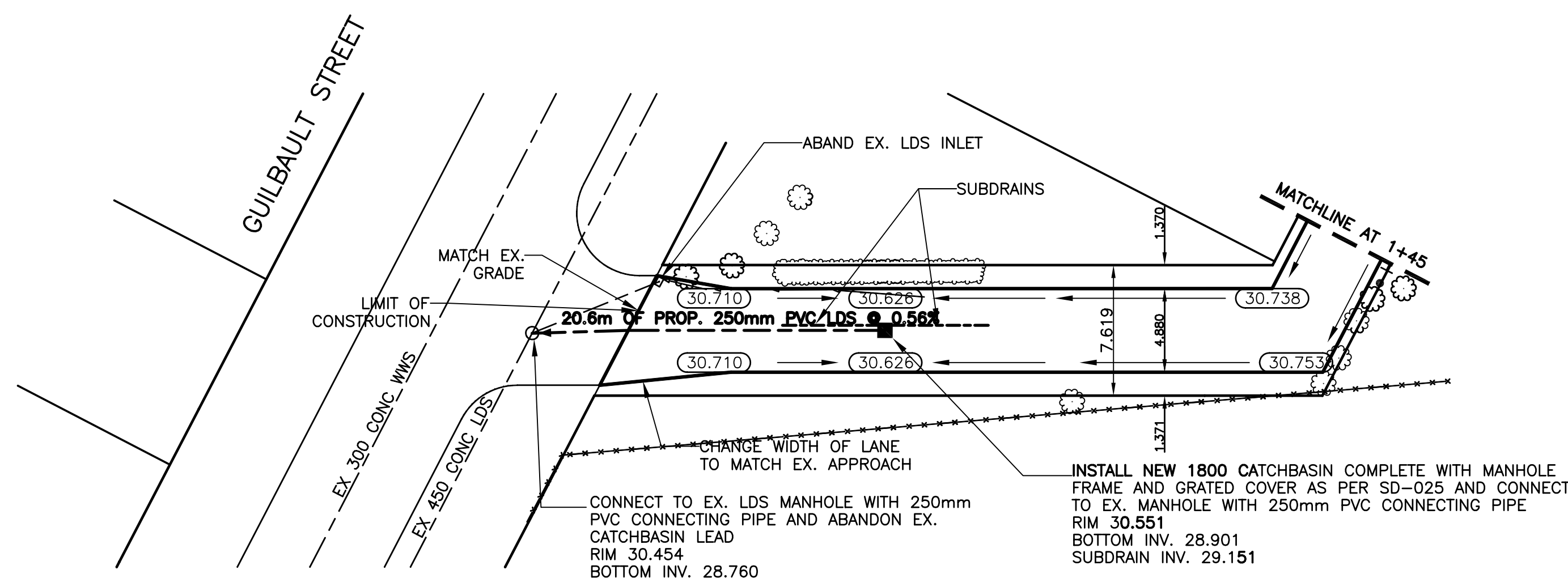
TYPICAL PAVEMENT CROSS SECTION
N.T.S.



LANE CROSS SECTION



LANE CROSS SECTION WITH SUBDRAIN



BENCHMARK:
 N.E. CORNER OF ELIZABETH RD. AND C.P.R. EMERSON SUBD. E. OF RUE ARCHBALD.
 TBLT. IN 7.6m CONC. PILE, 7.7m E. OF E. RAIL OF TRACKS AND 6.8m N. OF C.L.
 OF PAVEMENT OF ELIZABETH RD.

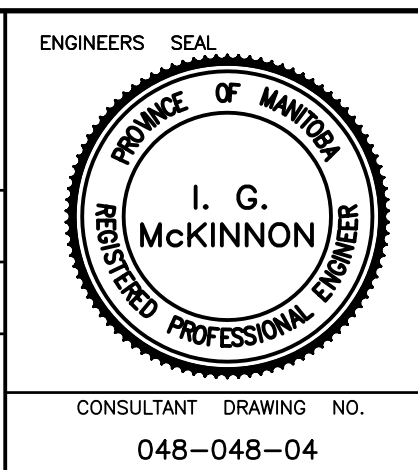
INSTALL PVC SUB DRAINS
 BETWEEN STA. 1+09 AND 1+21

EXISTING	LEGEND - PLAN	PROPOSED	EXISTING	LEGEND - PLAN	PROPOSED	EXISTING	LEGEND - PROFILE	PROPOSED
---	WATERMAIN	---	---	HYDRO	---	---	CENTER LINE	---
⊙	HYDRANT VALVE	⊙	---	M.T.S. CONCRETE	---	---	EAST GUTTER LINE	---
---	LAND DRAINAGE SEWER	---	---	ASPHALT	---	---	WEST GUTTER LINE	---
---	WASTE WATER SEWER	---	---	PROPERTY LINE	---	---	WATERMAIN	---
○	MANHOLE	⊕	---	SURVEY BAR	---	---	VALVE	---
□	CATCH BASIN	⊙	---	CURB STOP	---	---	LAND DRAINAGE SEWER	---
△	CURB INLET	▲	---	C.B. LEAD	---	---	WASTE WATER SEWER	---
---	TRAFFIC SIGNAL	---	---	SIDEWALK	---	---	JUNCTIONS	---
---	STEAM HT.	---	---	FENCE LINE	---	---	CULVERT	---
---	GAS	---	---	ELEVATIONS	---	---	ASPH./CONC. PAD	---
---		---	---		---	---	GARAGE PAD	---

LOCATION APPROVED		B.M. ELEV.	CWM: 33-008
---	SUPV. U/G STRUCTURES		231.859
---	DATE		
NOTE: LOCATION OF UNDERGROUND STRUCTURES AS SHOWN ARE BASED ON THE BEST INFORMATION AVAILABLE BUT NO GUARANTEE IS GIVEN THAT ALL EXISTING UTILITIES ARE SHOWN OR THAT THE GIVEN LOCATIONS ARE EXACT. CONFIRMATION OF EXISTENCE AND EXACT LOCATION OF ALL SERVICES MUST BE OBTAINED FROM THE INDIVIDUAL UTILITIES BEFORE PROCEEDING WITH CONSTRUCTION.			
NO.	REVISIONS	DATE	BY

SEG ENGINEERING INC.
 200 TACHE AVENUE
 WINNIPEG, MANITOBA
 (204)-233-2113

DESIGNED BY: S.M./R.H.
 CHECKED BY: S.M.
 DRAWN BY: R.H.
 APPROVED BY: I.McK.
 HOR. SCALE: 1:250
 VERT. SCALE: 1:10
 RELEASED FOR CONSTRUCTION: _____
 ORIGINALLY SIGNED BY: _____
 DATE: JUNE 2007



METRIC
 WHOLE NUMBERS INDICATE MILLIMETRES
 DECIMALIZED NUMBERS INDICATE METRES

THE CITY OF WINNIPEG
 PUBLIC WORKS DEPARTMENT

2007 LOCAL IMPROVEMENTS
 GUILBAULT/ARCHBALD LANES
 LANE PAVEMENT
 FROM GUILBAULT ST.
 TO MATCHLINE AT 1+45

CITY DRAWING NO.
 SHEET 1 OF 4
 344-2007

