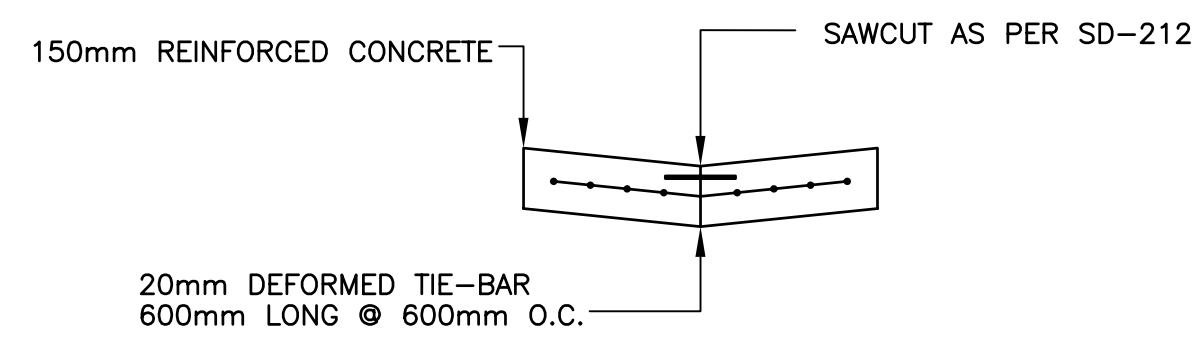
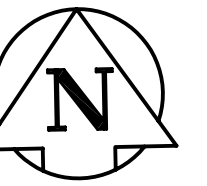
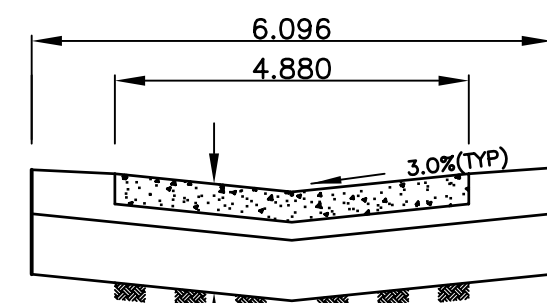


NOTES:

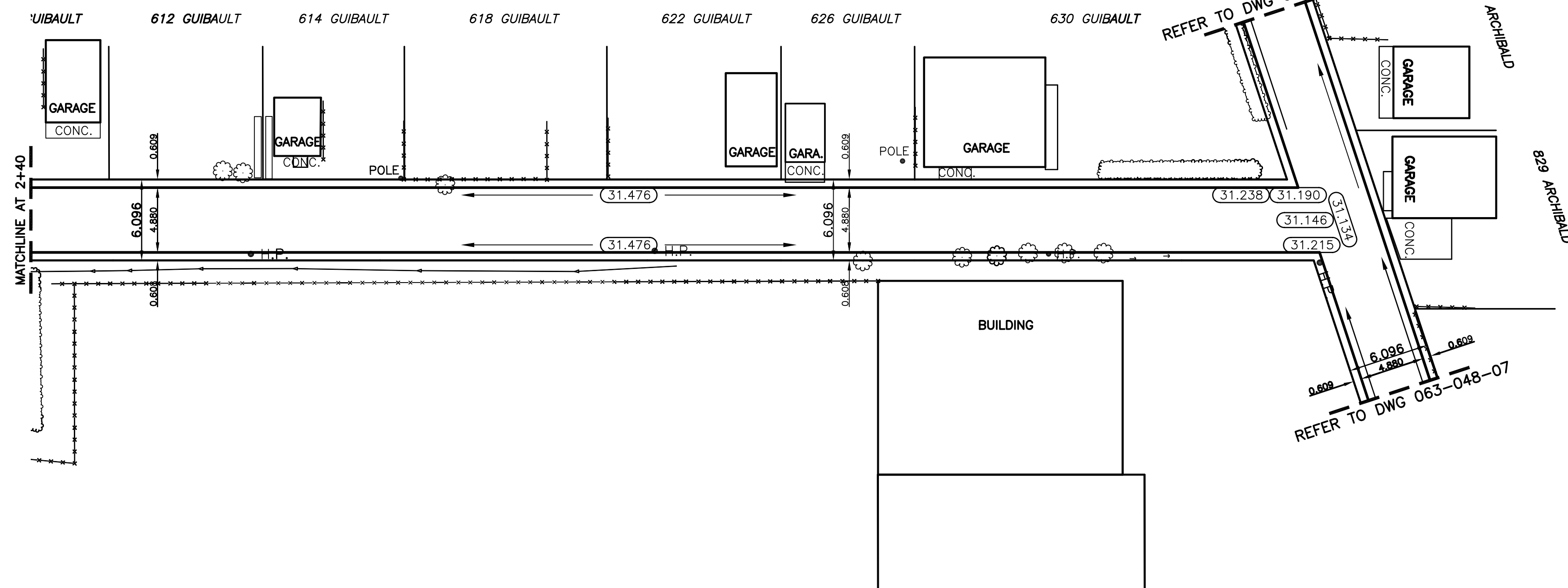
1. ISOLATE EXISTING HYDRO POLES AS DIRECTED BY CONTRACT ADMINISTRATOR
2. RENEW EXISTING APPROACHES AS DIRECTED BY CONTRACT ADMINISTRATOR
3. MODIFIED BARRIER CURB TO BE USED FOR CURB RENEWAL AT RADII.



TYPICAL PAVEMENT CROSS SECTION
N.T.S.



LANE CROSS SECTION



EXISTING	LEGEND - PLAN	PROPOSED	EXISTING	LEGEND - PLAN	PROPOSED	EXISTING	LEGEND - PROFILE	PROPOSED
	WATERMAIN		HYDRO	M.T.S.		CENTER LINE		
	HYDRANT		CONCRETE	ASPHALT		NORTH GUTTER LINE		
	VALVE		ASPHALT	PROPERTY LINE		SOUTH GUTTER LINE		
	LAND DRAINAGE SEWER		SURVEY BAR	CURB STOP		WATERMAIN		
	WASTE WATER SEWER		CURB STOP	C.B. LEAD		VALVE		
	MANHOLE		SIDEWALK	FENCE LINE		LAND DRAINAGE SEWER		
	CATCH BASIN		FENCE LINE	ELEVATIONS		WASTE WATER SEWER		
	CURB INLET		ELEVATIONS			JUNCTIONS		
	TRAFFIC SIGNAL					CULVERT		
	STEAM HT.					ASP./CONC. PAD		
	GAS					GARAGE PAD		

LOCATION APPROVED

SUPV.	U/G	STRUCTURES	DATE

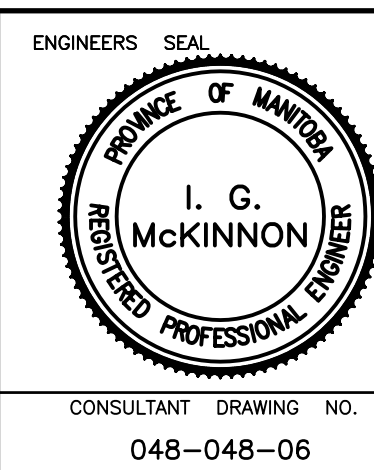
NOTE:
LOCATION OF UNDERGROUND STRUCTURES AS SHOWN ARE BASED ON THE BEST INFORMATION AVAILABLE BUT NO GUARANTEE IS GIVEN THAT ALL EXISTING UTILITIES ARE SHOWN OR THAT THE GIVEN LOCATIONS ARE EXACT. CONFIRMATION OF EXISTENCE AND EXACT LOCATION OF ALL SERVICES MUST BE OBTAINED FROM THE INDIVIDUAL UTILITIES BEFORE PROCEEDING WITH CONSTRUCTION.

BENCHMARK:
N.E. CORNER OF ELIZABETH RD. AND C.P.R. EMERSON SUBD. E. OF RUE ARCHBALD.,
TBLT. IN 7.6m CONC. PILE, 7.7m E. OF E. RAIL OF TRACKS AND 6.8m N. OF C.L.
OF PAVEMENT OF ELIZABETH RD.

NO.	REVISIONS	DATE	BY

SEG ENGINEERING INC.
200 TACHE AVENUE
WINNIPEG, MANITOBA
(204)-233-2113

DESIGNED BY: S.M./R.H.	CHECKED BY: S.M.
DRAWN BY: R.H.	APPROVED BY: I.McK.
HOR. SCALE: 1:250	RELEASED FOR CONSTRUCTION
VERT. SCALE: 1:10	
DATE: JUNE 2007	DATE:



THE CITY OF WINNIPEG
PUBLIC WORKS DEPARTMENT

2007 LOCAL IMPROVEMENTS
GUILBAULT/ARCHBALD LANE
LANE PAVEMENT
FROM MATCHLINE AT 2+40
TO LANE INTERSECTION AT STATION 3+38.748

CITY DRAWING NO. SHEET 3 OF 4
344-2007

APEGM
Certificate of Authorization
SEG Engineering Inc.
No. 252 Expiry: April 30, 2008

METRIC
WHOLE NUMBERS INDICATE MILLIMETRES
DECIMALIZED NUMBERS INDICATE METRES