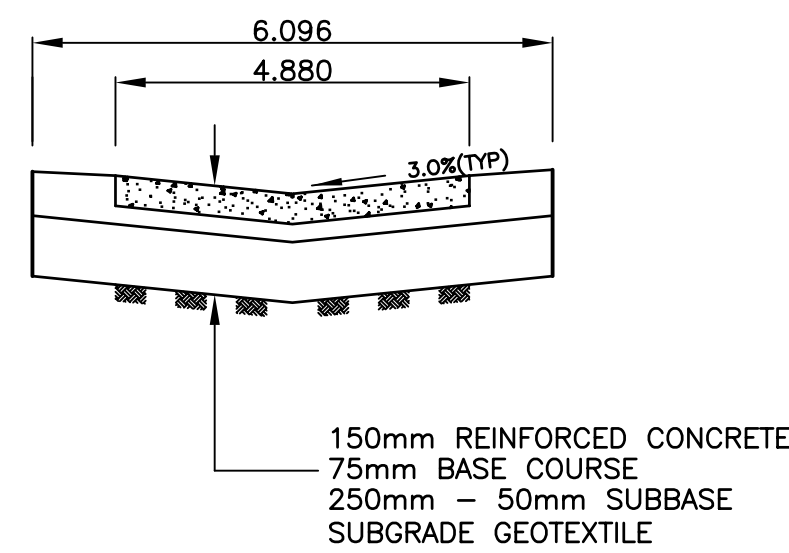
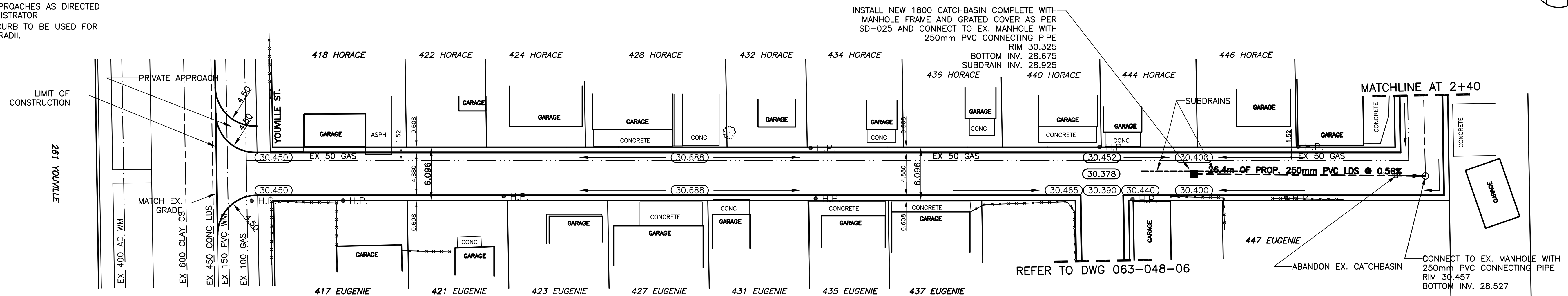
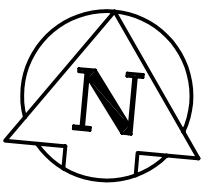
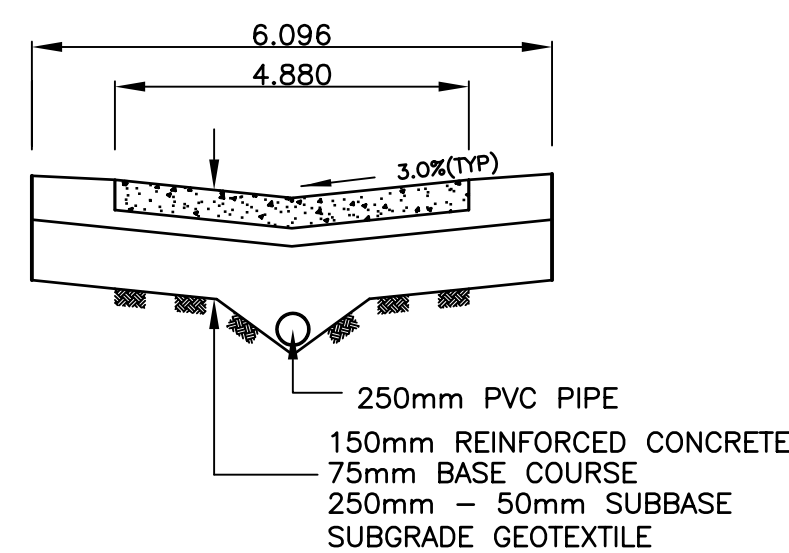


- NOTES:**
- ISOLATE EXISTING HYDRO POLES AS DIRECTED BY CONTRACT ADMINISTRATOR
 - RENEW EXISTING APPROACHES AS DIRECTED BY CONTRACT ADMINISTRATOR
 - MODIFIED BARRIER CURB TO BE USED FOR CURB RENEWAL AT RADII.

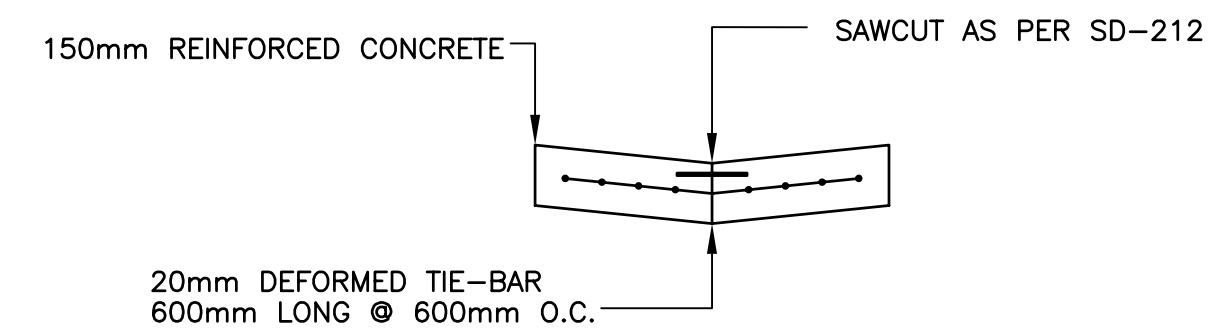
CHAINAGE ALONG CENTER OF ROW



TYPICAL LANE CROSS SECTION



TYPICAL LANE CROSS SECTION WITH SUBDRAIN



TYPICAL PAVEMENT CROSS SECTION
N.T.S.

BENCHMARK:
N.W. CORNER OF RUE DES MEURONS AND GOULET ST. TBLT. IN S. CONC. FOUNDATION OF FIRE HALL NO. 3, 0.5 m S. & 1.0 m BELOW BRICK OF N.W. CORNER OF BUILDING

INSTALL PVC SUB DRAINS BETWEEN STA. 1+99 AND 2+11

METRIC
WHOLE NUMBERS INDICATE MILLIMETRES
DECIMALIZED NUMBERS INDICATE METRES

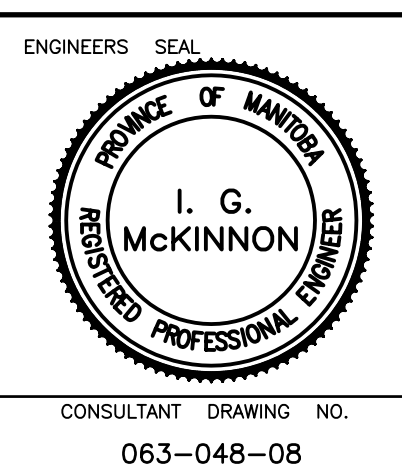
APEGM
Certificate of Authorization
SEG Engineering Inc.
No. 252 Expiry: April 30, 2008

EXISTING	LEGEND - PLAN	PROPOSED	EXISTING	LEGEND - PLAN	PROPOSED	EXISTING	LEGEND - PROFILE	PROPOSED
---	WATERMAIN	---	---	HYDRO	---	---	CENTER LINE	---
⊕	HYDRANT VALVE	⊕	---	M.T.S.	---	---	NORTH GUTTER LINE	---
---	LAND DRAINAGE SEWER	---	---	CONCRETE	---	---	SOUTH GUTTER LINE	---
---	WASTE WATER SEWER	---	---	ASPHALT	---	---	WATERMAIN	---
○	MANHOLE	⊕	---	PROPERTY LINE	---	---	VALVE	---
□	CATCH BASIN	⊕	---	SURVEY BAR	---	---	LAND DRAINAGE SEWER	---
△	CURB INLET	⊕	---	CURB STOP	---	---	WASTE WATER SEWER	---
---	TRAFFIC SIGNAL	---	---	C.B. LEAD	---	---	JUNCTIONS	---
---	STEAM HT.	---	---	SIDEWALK	---	---	CULVERT	---
---	GAS	---	---	FENCE LINE	---	---	ASPH./CONC. PAD	---
---		---	---	ELEVATIONS	---	---	GARAGE PAD	---

NO.	REVISIONS	DATE	BY

SEG ENGINEERING INC.
200 TACHE AVENUE
WINNIPEG, MANITOBA
(204)-233-2113

DESIGNED BY: S.M./R.H.
DRAWN BY: R.H.
CHECKED BY: S.M.
APPROVED BY: I.McK.
RELEASED FOR CONSTRUCTION: _____
DATE: JUNE 2007



THE CITY OF WINNIPEG
PUBLIC WORKS DEPARTMENT

2007 LOCAL IMPROVEMENTS
HORACE/EUGENIE LANE
LANE PAVEMENT
FROM YOUVILLE AVE.
TO MATCHLINE AT STATION 2+40

CITY DRAWING NO.
SHEET 1 OF 3
344-2007