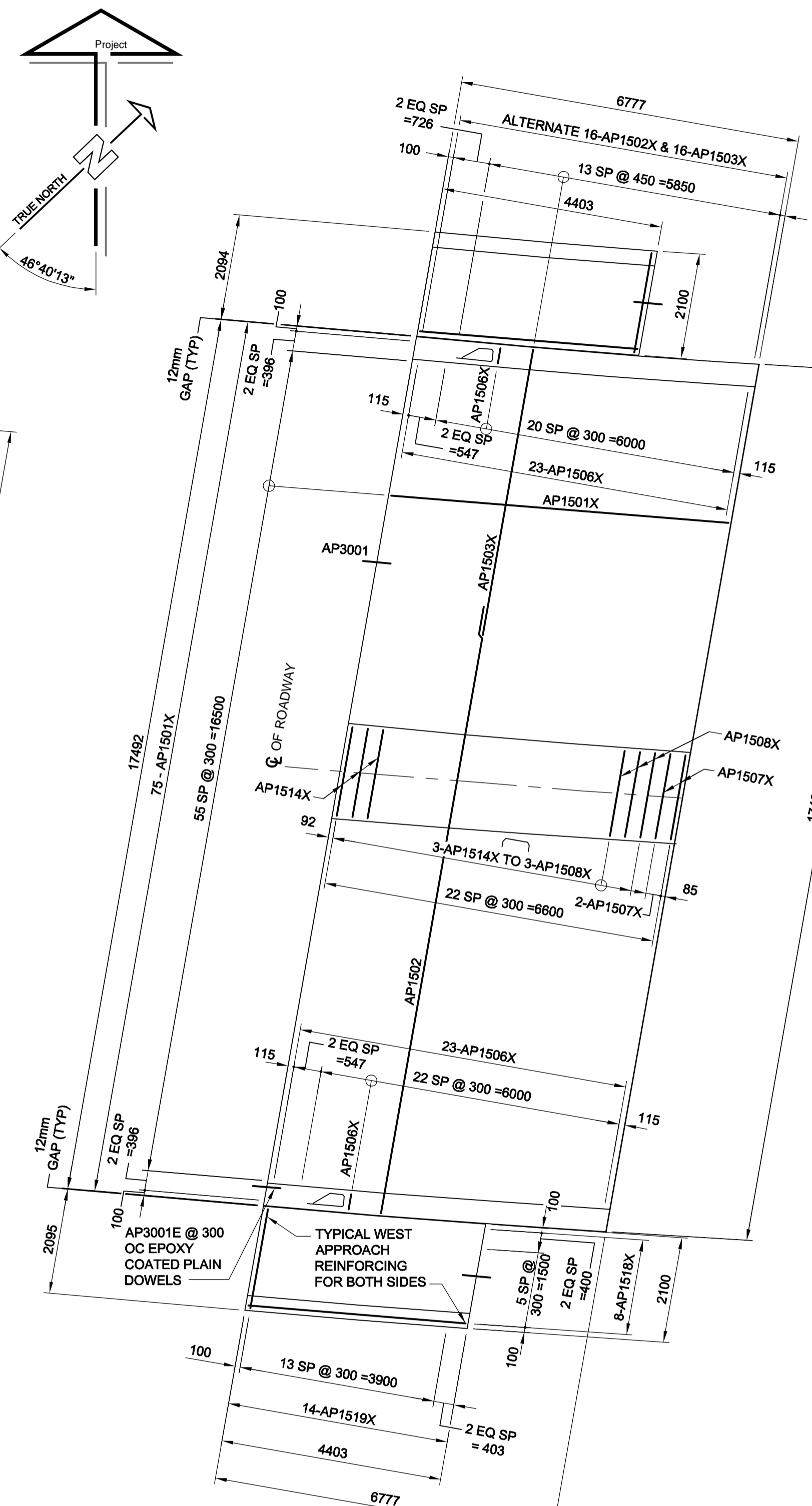
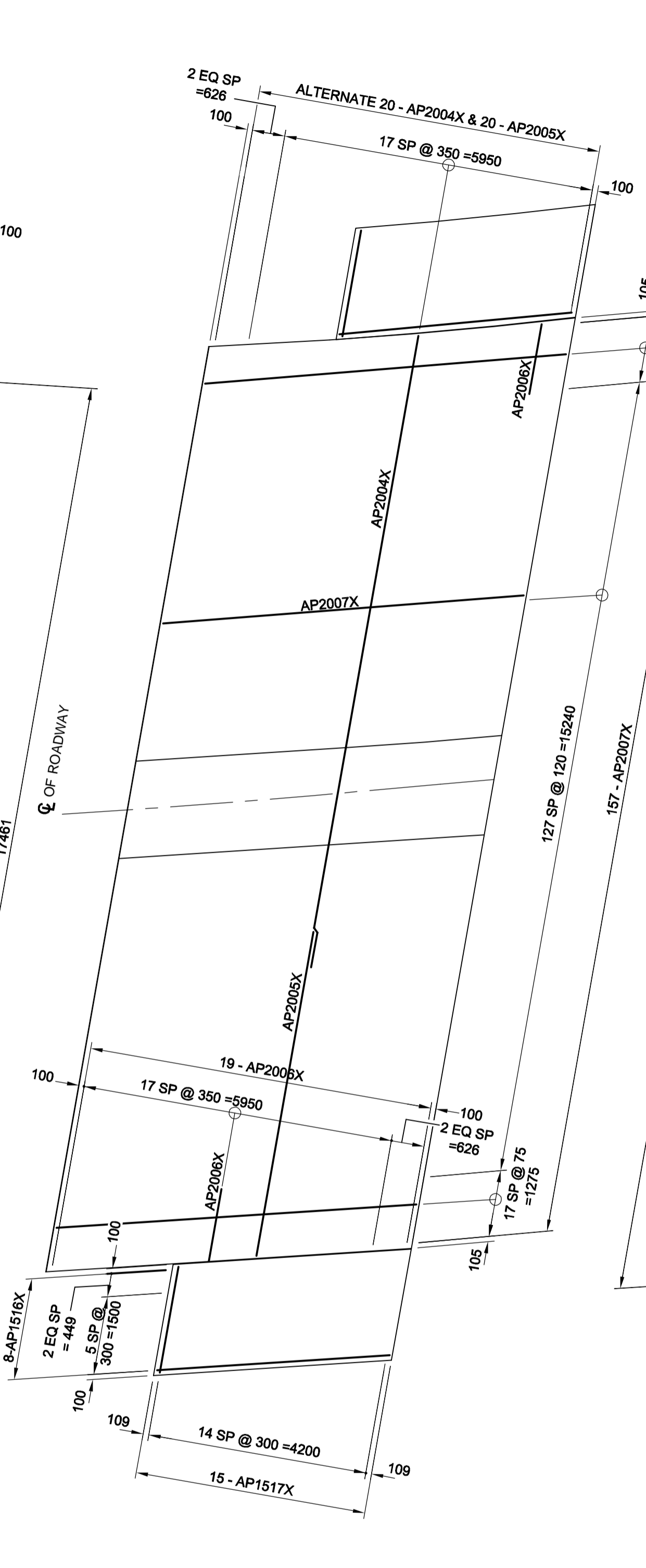
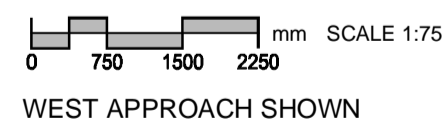


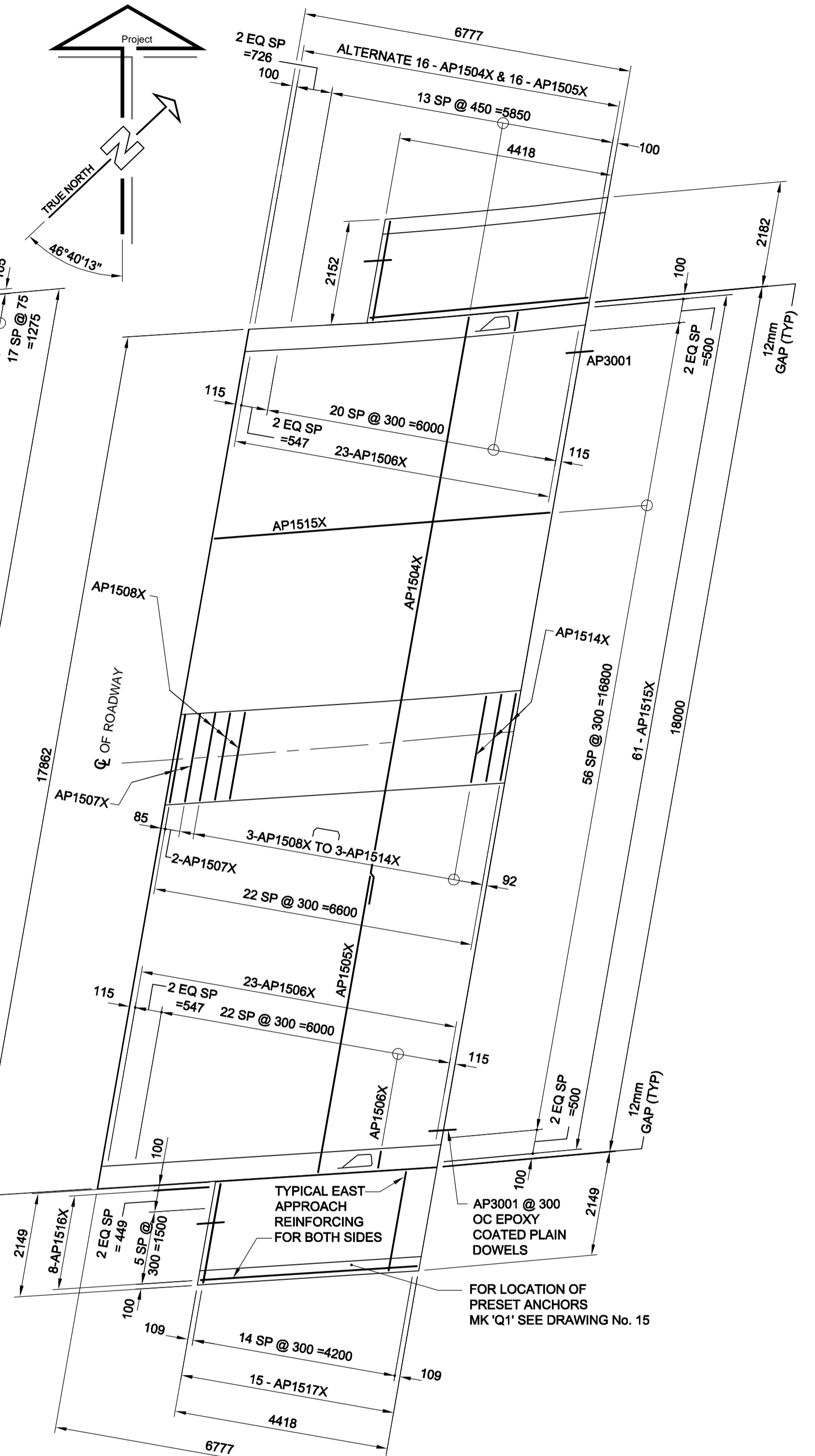
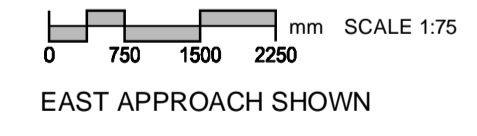
BOTTOM REINFORCING PLAN



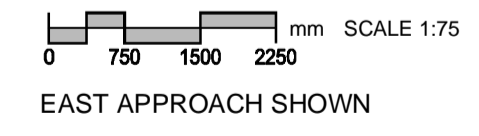
TOP REINFORCING PLAN



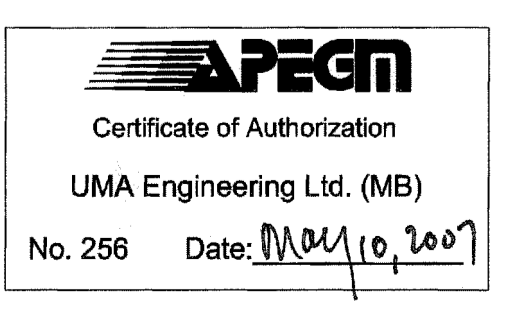
BOTTOM REINFORCING PLAN



TOP REINFORCING PLAN

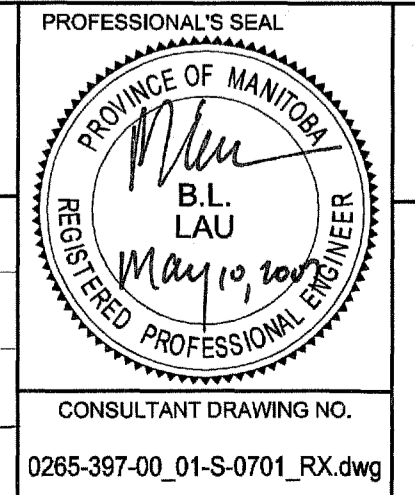


METRIC
WHOLE NUMBERS INDICATE MILLIMETRES
DECIMALIZED NUMBERS INDICATE METRES



BM 40-012	ELEV 238.149m
DESIGNED BY	BLL
CHECKED BY	SBB
DRAWN BY	CPK
APPROVED BY	Paul B.
HOR. SCALE	AS NOTED
VERT. SCALE	AS NOTED
ISSUED FOR CONSTRUCTION	07/05/10 DJH
NO. REVISIONS	YYMMDD BY

UMA AECOM © 2007 UMA ENGINEERING LTD. ALL RIGHTS RESERVED.	
DESIGNED BY	BLL
CHECKED BY	SBB
DRAWN BY	CPK
APPROVED BY	Paul B.
HOR. SCALE	AS NOTED
VERT. SCALE	AS NOTED
ISSUED FOR CONSTRUCTION	07/05/10 DJH
NO. REVISIONS	YYMMDD BY



THE CITY OF WINNIPEG
PUBLIC WORKS DEPARTMENT
TRANSPORTATION ENGINEERING DIVISION

HAMILTON AVENUE BRIDGE REHABILITATION
APPROACH SLAB CONCRETE AND REINFORCING DETAILS I

CITY DRAWING NUMBER: B133-07-17
SHEET 17 OF 30
DRAWING No. 17 REV 0

BID OPPORTUNITY No. 349-2007
CONSULTANT DRAWING NO. 0265-397-00_01-S-0701_RX.dwg