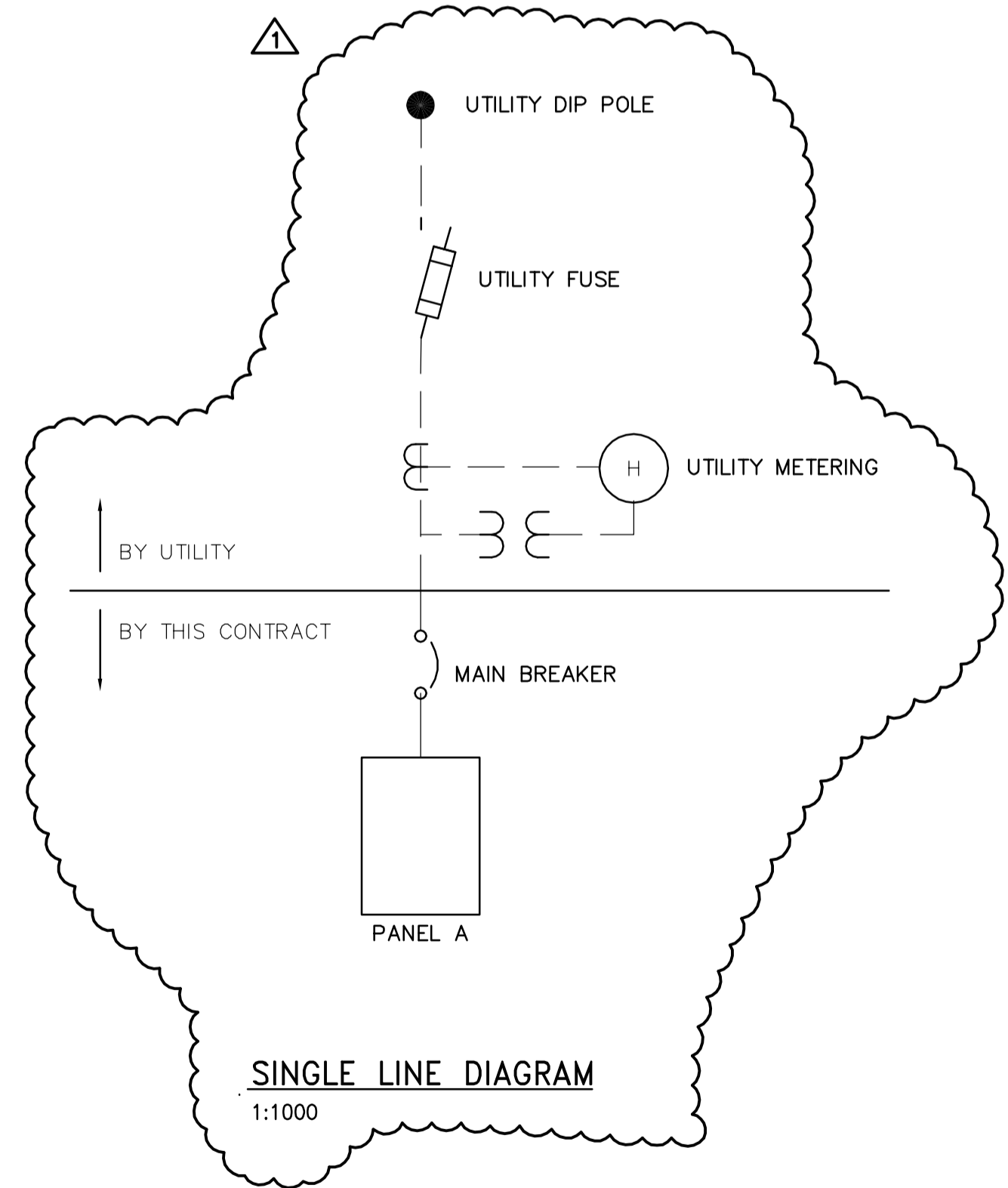
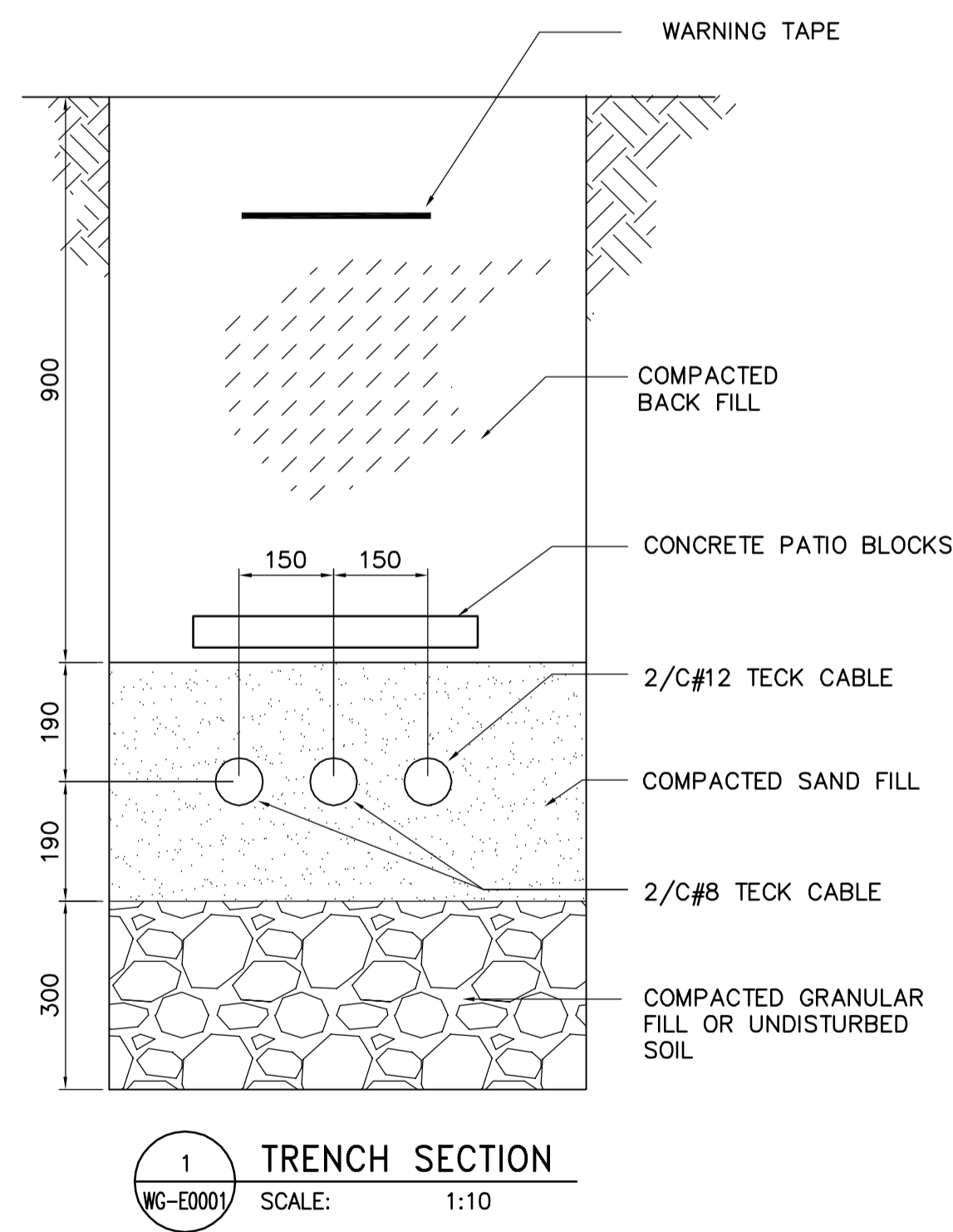


**LEGEND:**

- FIXTURE TYPE IDENTIFIER
- FLUORESCENT LUMINAIRE
- 250W MH, 120V POLE MOUNTED
- WALL MOUNTED FIXTURE
- SINGLE POLE SWITCH - 3 INDICATES 3-WAY SWITCH
- PHOTOCELL
- WALL MOUNTED EXIT LIGHT - ARROWS AS REQUIRED
- BATTERY PACK C/W HEADS AS INDICATED
- WALL MOUNTED EMERGENCY REMOTE HEADS
- DUPLEX RECEPTACLE
- SINGLE RECEPTACLE
- SPECIAL PURPOSE EQUIPMENT CONNECTION
- MOTOR/MECHANICAL LOAD
- DISCONNECT SWITCH
- DOOR CONTACT
- MOTION DETECTOR
- C.C.T.V. CAMERA
- TRANSIENT VOLTAGE SURGE SUPPRESSOR
- TELEPHONE OUTLET
- DATA OUTLET



 <b>APEGM</b> Certificate of Authorization Earth Tech Canada Inc. No. 730	B.M. ELEV.	 <b>Frederickson Cooper</b> ARCHITECTS	 <b>EarthTech</b> A Tyco International Ltd. Company	ENGINEER'S SEAL	 <b>THE CITY OF WINNIPEG</b> WATER AND WASTE DEPARTMENT SOLID WASTE SERVICES DIVISION BRADY RD. LANDFILL NEW ENTRANCE AND SCALE FACILITY ELECTRICAL SITE PLAN AND LEGEND	CITY FILE NUMBER SHEET OF CITY DRAWING NUMBER SWD-D-388
		DESIGNED BY: GSN	CHECKED BY: PS	ORIGINAL SIGNED BY: P. STRYK		
		DRAWN BY: ERC	APPROVED BY: TGS	2007/07/20		
		SCALE: ERC	RELEASED FOR CONSTRUCTION BY: V. JEANCART	CONSULTANT DRAWING NO. E1.01		
	NO. REVISIONS	DATE	BY	DATE		
	01	357-2007 ADDENDUM 1	07/07/31	ERC		
	00	ISSUED FOR TENDER	07/07/20	ERC		
	2006/08/31			2007/07/20		