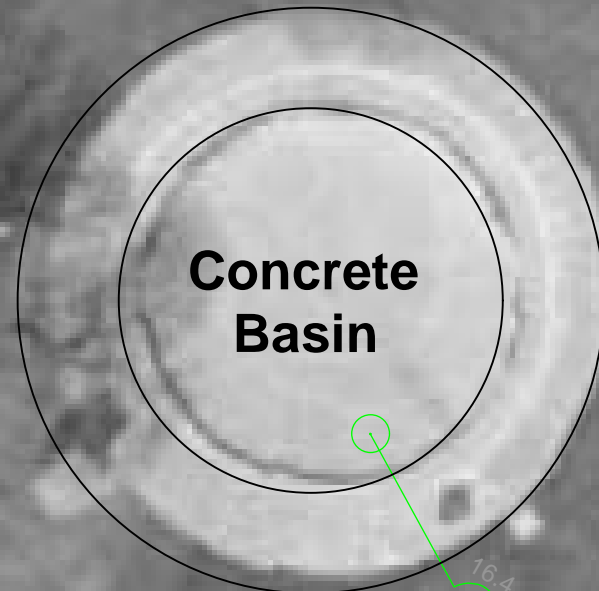




BACK LANE

27876

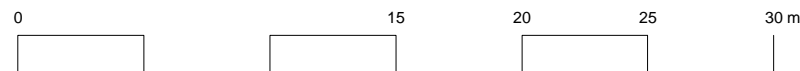
Playground



Concrete Basin

1.2 m High Chain Link Fence

Parking Lot



CONTRACTOR TO CONFIRM ALL DIMENSIONS AND REPORT ANY DISCREPANCIES TO CONTRACT ADMINISTRATOR PRIOR TO CONSTRUCTION. LOCATION OF UNDERGROUND STRUCTURES AS SHOWN ARE BASED ON THE BEST INFORMATION AVAILABLE BUT NO GUARANTEE IS GIVEN THAT ALL EXISTING UTILITIES ARE SHOWN OR THAT THE GIVEN LOCATIONS ARE EXACT. CONFIRMATION OF EXISTENCE AND EXACT LOCATION OF ALL SERVICES MUST BE OBTAINED FROM THE INDIVIDUAL UTILITIES BEFORE PROCEEDING WITH CONSTRUCTION.



THE CITY OF WINNIPEG
 Planning, Property and Development Department
 Planning and Land Use Division
 Unit 15 - 30 Fort Street, Winnipeg, MB, (R3C 4X5)

DESIGNED BY	CHECKED BY	MANAGER, PARK AND OPEN SPACES	DATE
DRAWN BY	APPROVED BY		
HORIZ. SCALE	1:300	MANAGER, PLANNING AND LAND USE DIVISION	DATE
VERT. SCALE			
DATE	February 2007		

DRAWING TITLE		DRAWING NO.
River Heights Community Center Spray Pad Development		R.16-H
SITE ADDRESS		BID OPPORTUNITY NO.
1370 Grosvenor Ave.		

Date: 2007/02/19
File name: River Heights Comm Center_BOpp1 v11.mcd