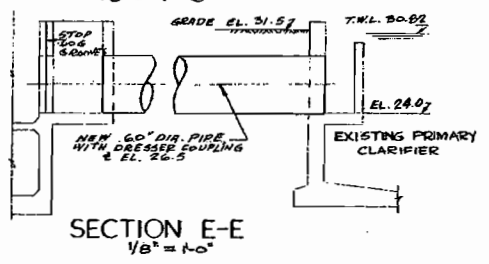
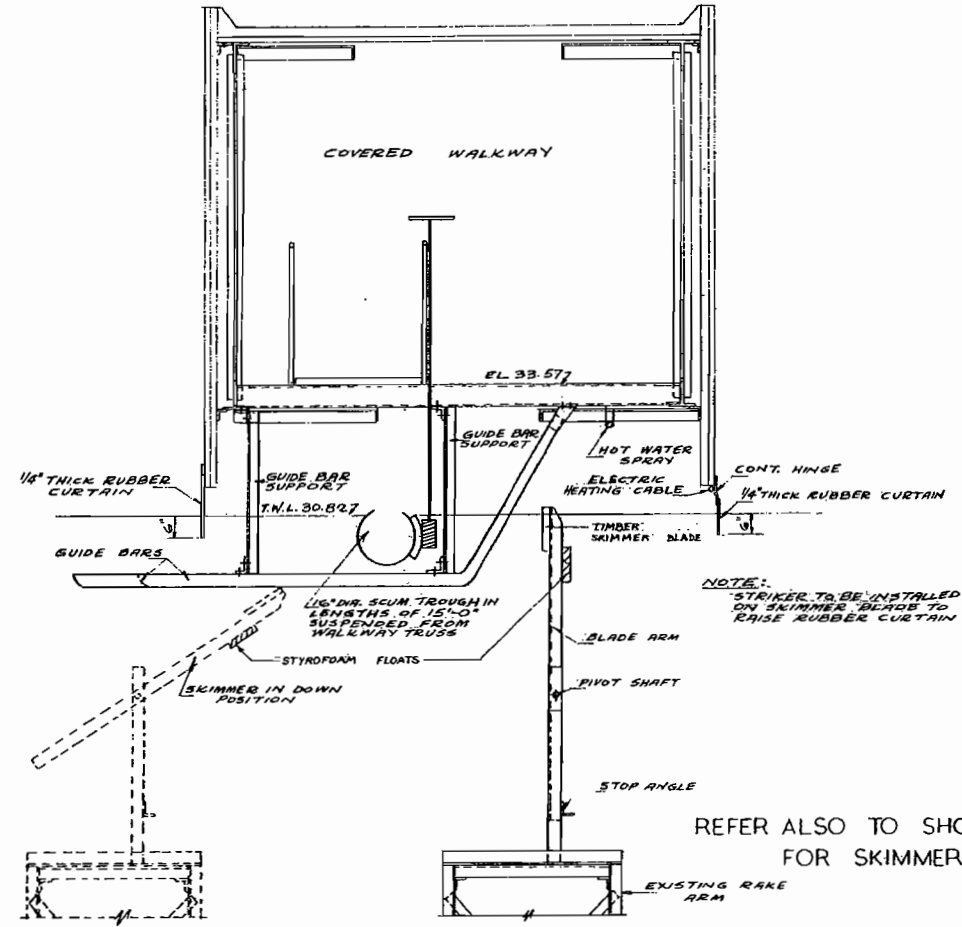


PART PLAN OF 115'-0" DIA TANK  
1/8" = 1'-0"

PART PLAN OF 145'-0" DIA TANK  
1/8" = 1'-0"

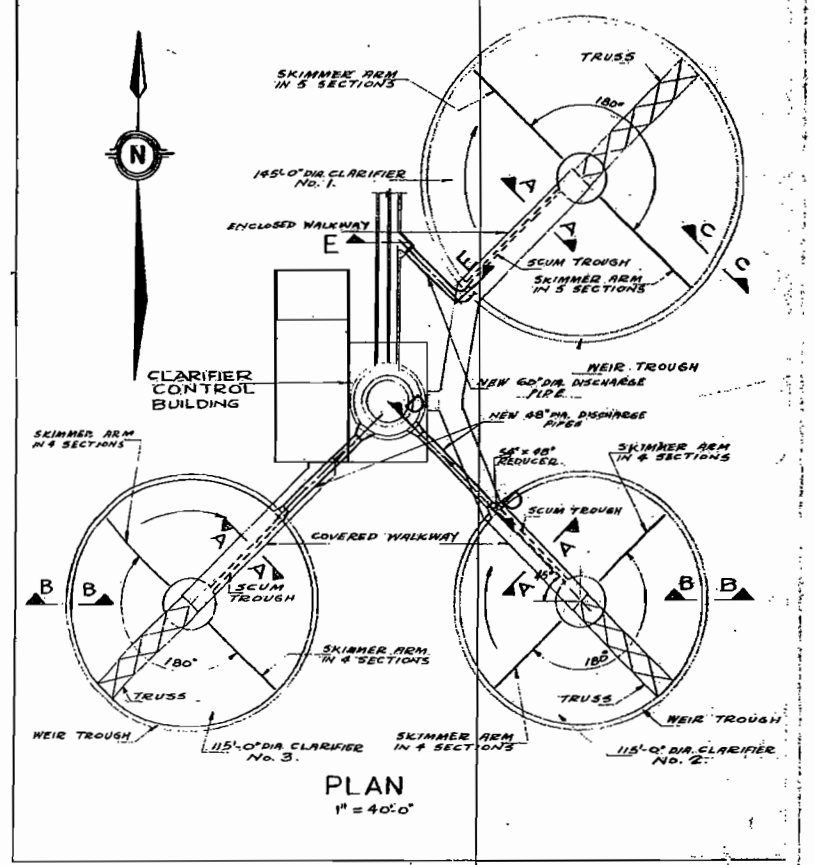


SECTION E-E  
1/8" = 1'-0"

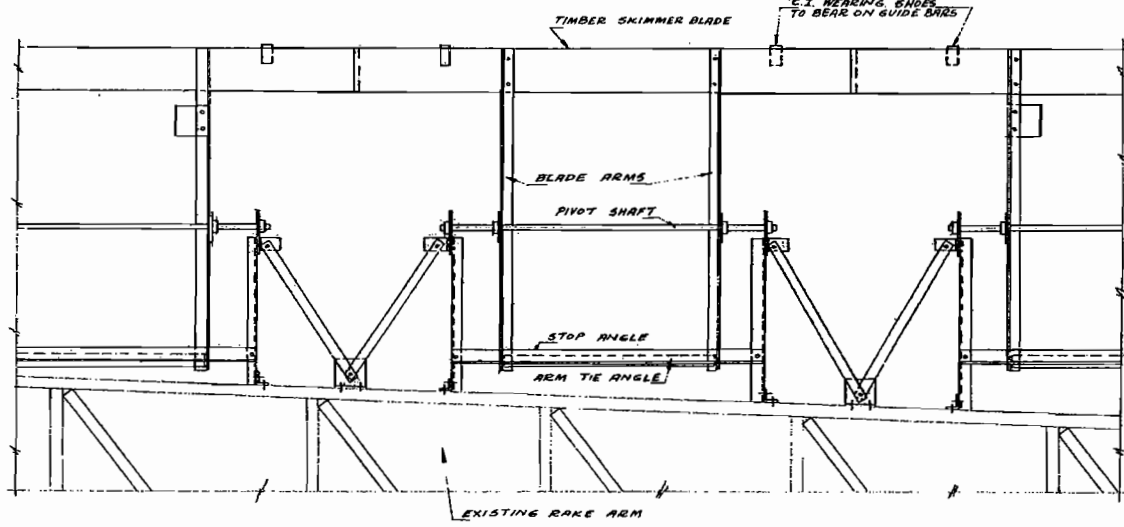


SECTION A-A  
1/2" = 1'-0"

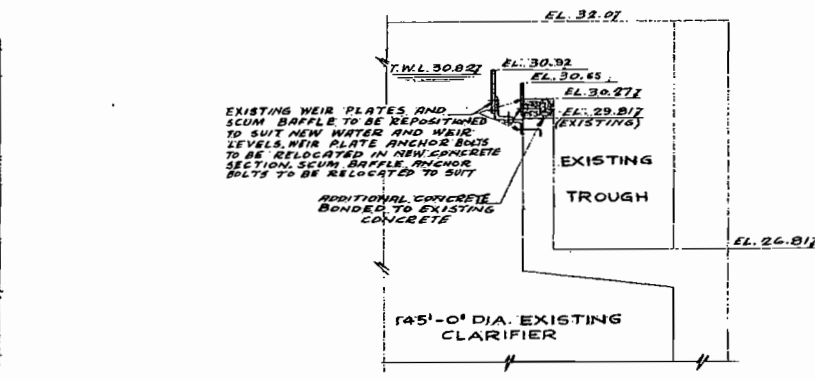
REFER ALSO TO SHOP DWG. 102-P-5 FOR SKIMMER DETAILS



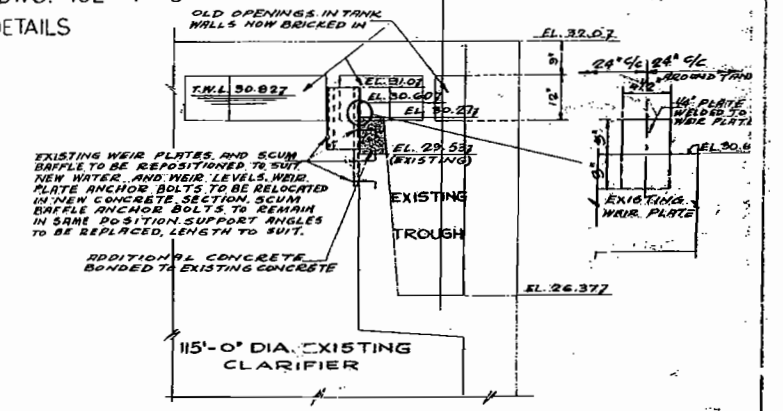
PLAN  
1" = 40'-0"



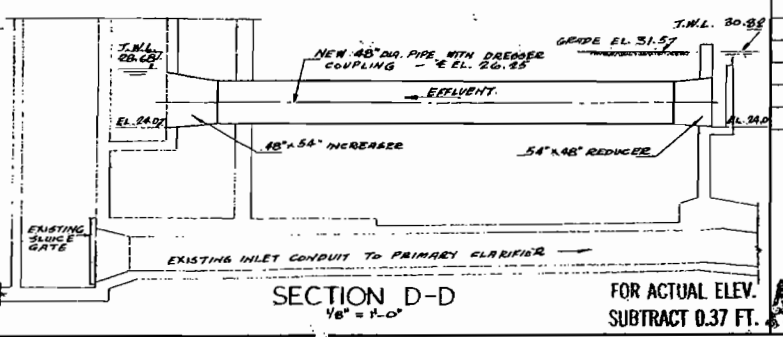
TYPICAL LONGITUDINAL SECTION  
1/2" = 1'-0"



SECTION C-C  
1/2" = 1'-0"



SECTION B-B  
1/2" = 1'-0"



SECTION D-D  
1/8" = 1'-0"

FOR ACTUAL ELEV. SUBTRACT 0.37 FT.

REVISIONS		
NO.	DATE	DETAIL

PROVIDE OF BANTICK REGISTERED ENGINEER  
J. W. MacLAREN

PROVIDE OF BANTICK REGISTERED ENGINEER  
J. L. GREER

THE METROPOLITAN CORPORATION OF GREATER WINNIPEG  
WATERWORKS AND WASTE DISPOSAL DIVISION

NORTH END SEWAGE TREATMENT PLANT

**CONTRACT A - CLARIFIER CONTROL BUILDING - MECHANICAL CLARIFIER MECHANISMS**

APPROVED: *J. W. MacLaren*  
JAMES F. MACLAREN LIMITED ENGINEERS TORONTO

APPROVED: *J. L. Greer*  
W. L. WARDROP ASSOCIATES (MANAGEMENT) LIMITED ENGINEERING CONSULTANTS WINNIPEG

DATE: MARCH 11, 1963  
SCALE: AS SHOWN  
DWG. NO. OF: 194 / 217  
NEP-94

AUG. 1966

AS BUILT

FILE # NR 10302

FILE 530-D-4632