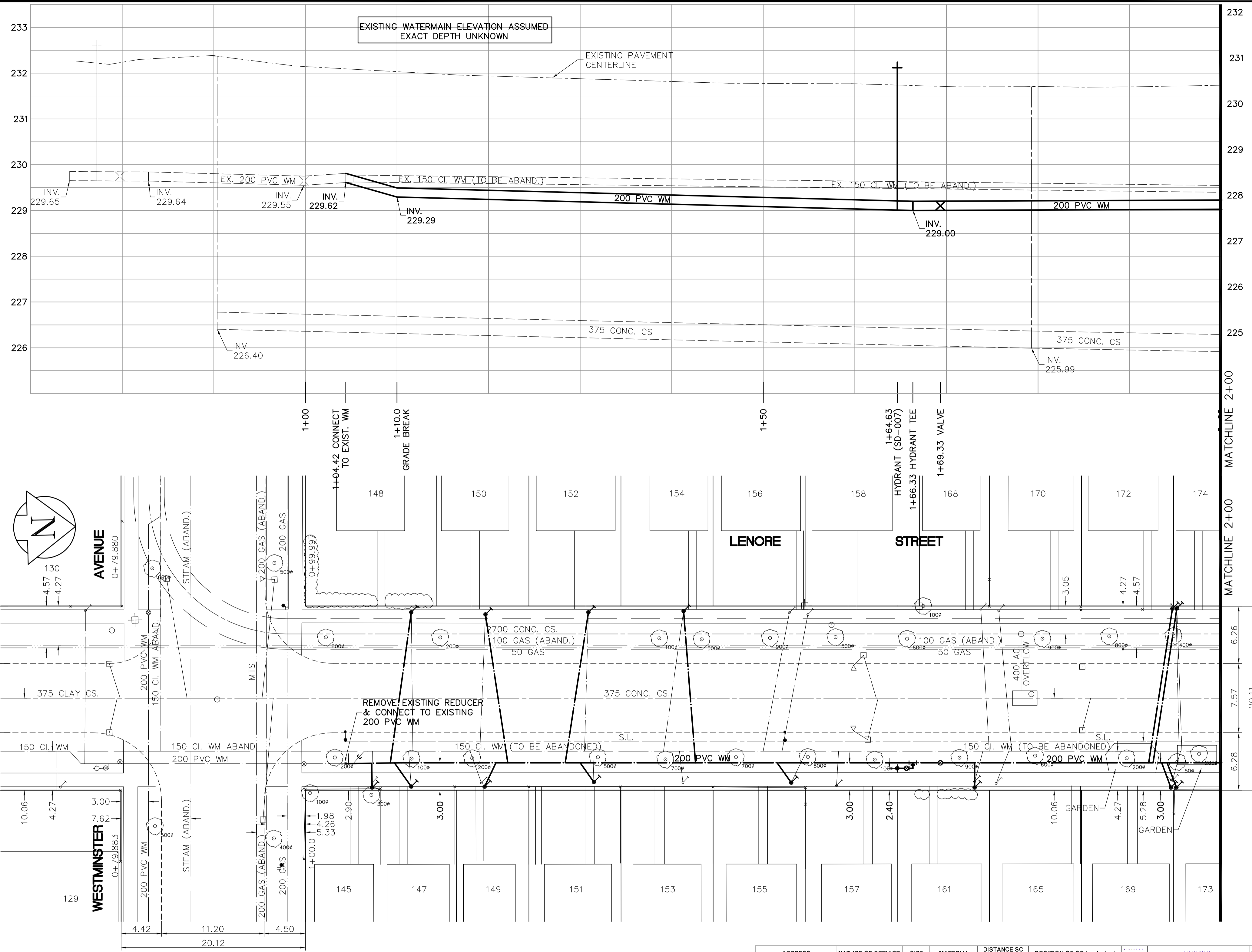
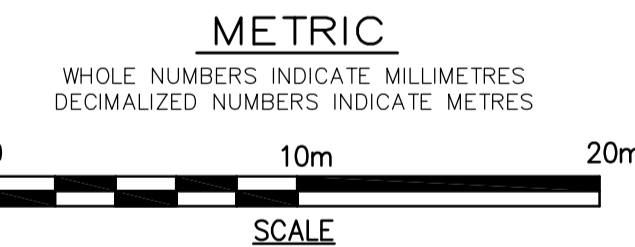


SHEET: COW-WM-A1 (11/2002) FILE NAME: L:\Users\1999000\199942\206-CAD\UID\ADDENDUM\_1\199942-C01.dwg LAYOUT NAME: layout1



- CONSTRUCTION NOTES**
1. EXPOSE WATERMAIN CONNECTIONS AND CONFIRM INVERTS PRIOR TO CONSTRUCTION.
  2. INSTALL WATERMAIN BY TRENCHLESS METHODS.
  3. ALL MATERIALS SHALL CONFORM TO THE CITY OF WINNIPEG STANDARD CONSTRUCTION SPECIFICATIONS.
  4. MINIMUM COVER TO TOP OF PROPOSED WATERMAIN SHALL BE 2.5m FROM STREET CENTERLINE.
  5. INSTALL ALL HYDRANTS WITH FLANGE ELEVATION 50mm- 150mm ABOVE FINISHED GRADE.
  6. REPLACE ALL EXISTING LEAD SERVICES FROM THE PROPOSED WATERMAIN TO PROPERTY LINE.
  7. NOTIFY ALL AFFECTED RESIDENTS AND BUSINESSES 24 HOURS IN ADVANCE OF ANY WATER SHUTDOWN OR DISRUPTION OF SERVICE.
  8. LOCATION OF WATER SERVICES SHOWN ON DRAWINGS ARE APPROXIMATE. THE CONTRACTOR SHALL FIELD LOCATE ALL WATER SERVICES PRIOR TO CONSTRUCTION.
  9. ALL VALVES SHALL BE RED TOP (COUNTER CLOCKWISE TO CLOSE).
  10. BACKFILL UNDER OR WITHIN 1.0m OF PAVEMENTS, INCLUDING SIDEWALKS SHALL BE CLASS 3 BACKFILL EXCEPT AS NOTED. BACKFILL IN BOULEVARDS SHALL BE CLASS 5 BACKFILL.



ADDRESS	NATURE OF SERVICE	SIZE	MATERIAL	DISTANCE SC TO PROPERTY	POSITION OF SC (curb stop)	POSITION OF CC (corp)	COMMENTS:
174 LENORE ST	RESIDENTIAL	19 mm	COPPER	0.5 m	Long: 65.4 m N of NL WESTMINSTER HOUSE Short: 0.3 m S of SL	Long: OPP of SC	FORMER DOUBLE W/ 172 NOW SINGLE RENEW TO PROPERTY
173 LENORE ST	RESIDENTIAL	16 mm	LEAD	0.5 m	Long: 55.1 m N of NL WESTMINSTER HOUSE Short: 1.4 m S of SL	Long: 0.3 m N of SC	DOUBLE W/ 169 SERV NOW UNCROSSED RENEW TO PROPERTY
172 LENORE ST	RESIDENTIAL	19 mm	COPPER	0.5 m	Long: 95.1 m N of NL WESTMINSTER HOUSE Short: 2.1 m N of NL	Short: 0.9 m N of SC	FORMER DOUBLE W/ 174 NOW SINGLE RENEW TO PROPERTY
170 LENORE ST	RESIDENTIAL	19 mm	COPPER	0.5 m	Long: 75.9 m N of NL WESTMINSTER HOUSE Short: 1.1 m S of SL	Short: 0.9 m N of SC	FORMER DOUBLE W/ 168
169 LENORE ST	RESIDENTIAL	16 mm	LEAD	0.3 m	Long: 95.1 m N of NL WESTMINSTER BLDG 169 Short: 0.3 m N of NL	Short: 0.3 m N of SC	FORMER DOUBLE WITH 173 RENEW TO PROPERTY
168 LENORE ST	RESIDENTIAL	19 mm	COPPER	0.3 m	Long: 72.8 m N of NL WESTMINSTER HOUSE Short: 1.8 m N of NL	Short: 1.8 m N of SC	
165 LENORE ST	RESIDENTIAL	19 mm	COPPER	0.5 m	Long: 37.5 m S of 1ST HYD HOUSE Short: 0.9 m S of SL	Long: 0.3 m S of SC	NEW CORP IN OLD CORP HOLE
161 LENORE ST	RESIDENTIAL	16 mm	LEAD	0.3 m	Long: 75.9 m N of NL WESTMINSTER HOUSE Short: 1.1 m S of SL	Long: 0.9 m N of SC	FORMER DOUBLE NOW SINGLE SIC RENEW TO PROPERTY
158 LENORE ST	RESIDENTIAL	19 mm	COPPER	0.8 m	Long: 54.1 m N of NL WESTMINSTER HOUSE Short: 0.3 m S of SL	Long: 4.1 m S of SC	DOUBLE WITH 156
157 LENORE ST	RESIDENTIAL	19 mm	COPPER	0.3 m	Long: 58.2 m N of NL WESTMINSTER HOUSE Short: 1.8 m N of SL	Long: S of SC	FORMER DOUBLE W/ 155

ADDRESS	NATURE OF SERVICE	SIZE	MATERIAL	DISTANCE SC TO PROPERTY	POSITION OF SC (curb stop)	POSITION OF CC (corp)	COMMENTS:
156 LENORE ST	RESIDENTIAL	19 mm	COPPER	0.7 m	Long: 52.3 m N of NL WESTMINSTER HOUSE Short: 1.2 m S of SL	Long: 2.4 m S of SC	DOUBLE W/ 158
155 LENORE ST	RESIDENTIAL	19 mm	COPPER	0.5 m	Long: 54.1 m N of NL WESTMINSTER HOUSE Short: 0.3 m S of SL	Long: 0.6 m N of SC	RENEW TO PROPERTY
154 LENORE ST	RESIDENTIAL	19 mm	COPPER	0.3 m	Long: 40.6 m N of NL WESTMINSTER HOUSE Short: 2.5 m S of NL	Short: 1.5 m S of SC	RENEW TO PROPERTY
153 LENORE ST	RESIDENTIAL	13 mm	COPPER	0.2 m	Long: 41.1 m N of NL WESTMINSTER BASEMENT Short: 1.8 m S of NL	Short: 0.3 m S of SC	
152 LENORE ST	RESIDENTIAL	19 mm	COPPER	0.5 m	Long: 30.5 m N of NL WESTMINSTER HOUSE Short: 3.0 m S of NL	Short: 0.3 m S of SC	RENEW TO PROPERTY
151 LENORE ST	RESIDENTIAL	19 mm	COPPER	0.5 m	Long: 32.0 m N of NL WESTMINSTER HOUSE Short: 15.6 m N of SL	Short: 0.6 m S of SC	RENEW TO PROPERTY
150 LENORE ST	RESIDENTIAL	19 mm	COPPER	0.7 m	Long: 19.2 m N of NL WESTMINSTER HOUSE Short: 2.7 m S of NL	Short: 0.8 m S of SC	RENEW TO PROPERTY
149 LENORE ST	RESIDENTIAL	16 mm	LEAD	0.3 m	Long: 19.2 m N of NL WESTMINSTER HOUSE Short: 1.8 m N of SL	Short: 1.2 m S of SC	RENEW TO PROPERTY
148 LENORE ST	RESIDENTIAL	19 mm	COPPER	0.5 m	Long: 11.7 m N of NL WESTMINSTER HOUSE Short: 0.3 m N of NL	Long: 0.3 m S of SC	RENEW TO PROPERTY
147 LENORE ST	RESIDENTIAL	19 mm	COPPER	0.3 m	Long: 11.6 m N of NL WESTMINSTER HOUSE Short: 2.6 m N of NL	Short: 0.3 m S of SC	RENEW TO PROPERTY
145 LENORE ST	RESIDENTIAL	13 mm	LEAD	0.8 m	Long: 7.6 m N of NL WESTMINSTER HOUSE Short: 1.8 m S of NL	Long: 0.3 m S of SC	RENEW TO PROPERTY

**LOCATION APPROVED UNDERGROUND STRUCTURES**

SUPV. U/G STRUCTURES DATE COMMITTEE

**NOTE:**  
LOCATION OF UNDERGROUND STRUCTURES AS SHOWN ARE BASED ON THE BEST INFORMATION AVAILABLE. BUT NO GUARANTEE IS GIVEN THAT ALL EXISTING UTILITIES ARE SHOWN OR THAT THE GIVEN LOCATIONS ARE EXACT. CONFIRMATION OF EXISTENCE AND EXACT LOCATION OF ALL SERVICES MUST BE OBTAINED FROM THE INDIVIDUAL UTILITIES BEFORE PROCEEDING WITH CONSTRUCTION.

150 mm W.M.	WATERMAIN	150 mm W.M.	HYDRO	150 mm W.M.	WATERMAIN
Hydrant Valve	HYDRANT VALVE	Telephone	TELEPHONE	Hydrant Valve	HYDRANT VALVE
300mm L.D.S.	LAND DRAINAGE SEWER	Concrete	CONCRETE	300mm L.D.S.	LAND DRAINAGE SEWER
250mm W.W.S.	WASTEWATER SEWER	Asphalt	ASPHALT	250mm W.W.S.	WASTE WATER SEWER
Manhole	MANHOLE	Property Line	PROPERTY LINE	Culvert	CULVERT
Catch Basin	CATCH BASIN	Survey Bar	SURVEY BAR	Gas	GAS
Curb Inlet	CURB INLET	Tree	TREE		
Junctions	JUNCTIONS	Anode	ANODE		
Culvert	CULVERT	Concrete Sidewalk	CONCRETE SIDEWALK		
Gas	GAS	Fence	FENCE		

**EARTH TECH**  
A tyco INTERNATIONAL LTD. COMPANY  
Earth Tech (Canada) Inc. Winnipeg, Manitoba 204-477-5381

DESIGNED BY: GSK, GDL  
CHECKED BY: GSK  
DRAWN BY: GDL  
APPROVED BY: KWF

HOR. SCALE: 1:250  
VERTICAL SCALE: 1:50

RELEASED FOR CONSTRUCTION BY: K. ZUREK

CONSULTANT DRAWING NO. 99942-C01

DATE: 2007/04/11  
DATE: 2007/05/31

**THE CITY OF WINNIPEG**  
Winnipeg WATER AND WASTE DEPARTMENT

**2007 WATERMAIN RENEWALS CONTRACT 6**

LENORE STREET  
WESTMINSTER AVENUE TO PORTAGE AVENUE  
WESTMINSTER AVENUE TO STA. 2+00

SHEET 1 OF 8  
CITY DRAWING NUMBER D-9171