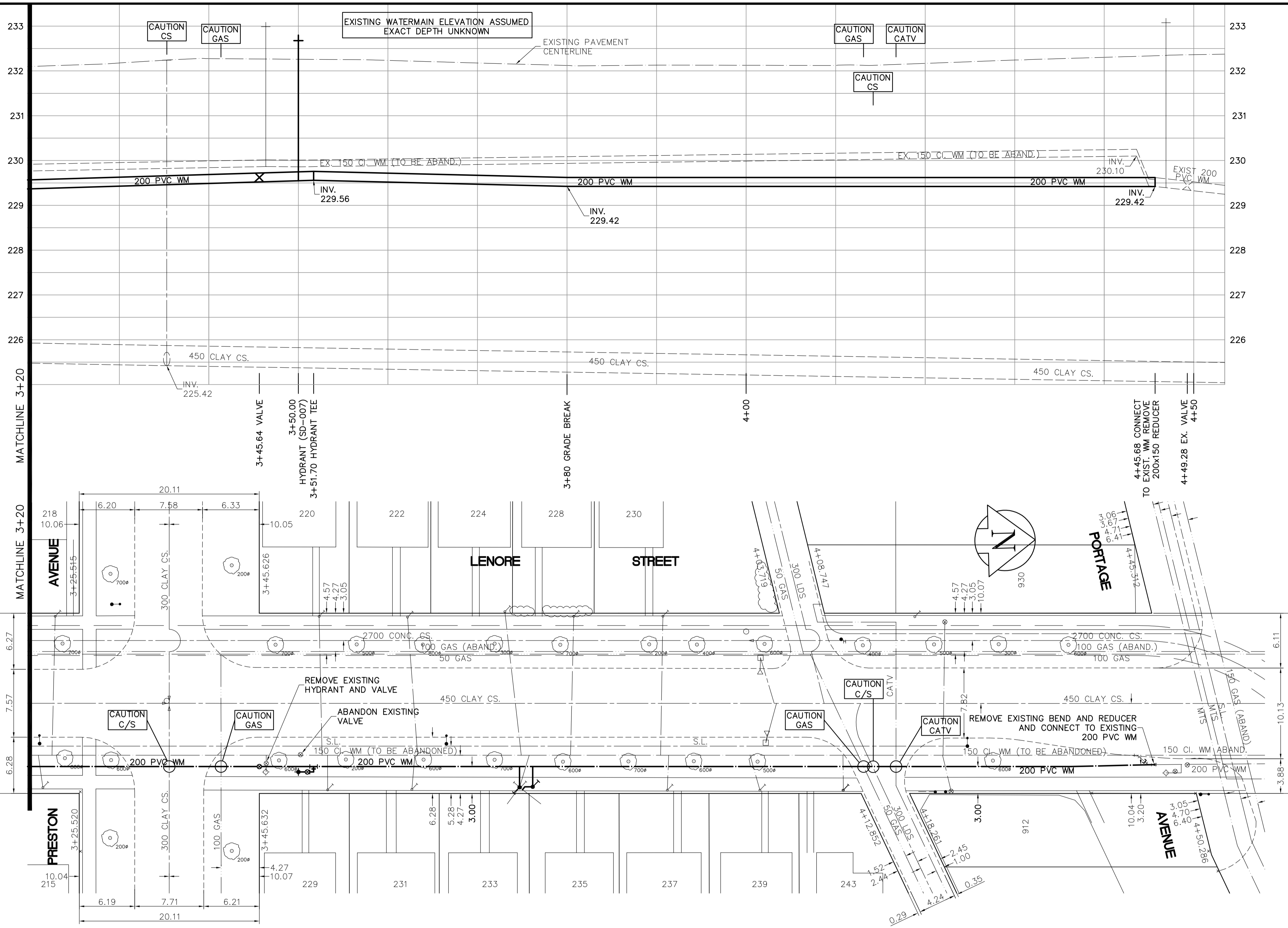
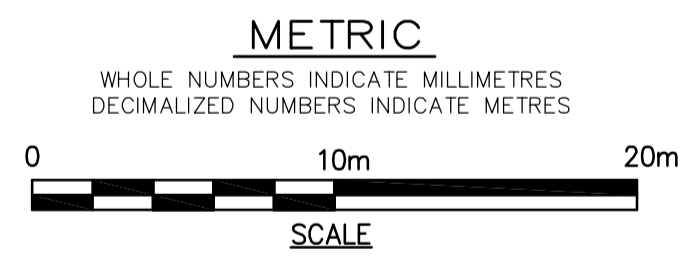


SHEET: CWM-WM-A1 (11/2002) FILE NAME: L:\wms\9994\9994\026-CAD\UID\Cwm\9994-C03.dwg LAYOUT NAME: C-03 D-9173 MAY 31, 2007 - 11:34am PLOTTED BY: gerald.losocco



- CONSTRUCTION NOTES**
1. EXPOSE WATERMAIN CONNECTIONS AND CONFIRM INVERTS PRIOR TO CONSTRUCTION.
 2. INSTALL WATERMAIN BY TRENCHLESS METHODS.
 3. ALL MATERIALS SHALL CONFORM TO THE CITY OF WINNIPEG STANDARD CONSTRUCTION SPECIFICATIONS.
 4. MINIMUM COVER TO TOP OF PROPOSED WATERMAIN SHALL BE 2.5m FROM STREET CENTERLINE.
 5. INSTALL ALL HYDRANTS WITH FLANGE ELEVATION 50mm - 150mm ABOVE FINISHED GRADE.
 6. REPLACE ALL EXISTING LEAD SERVICES FROM THE PROPOSED WATERMAIN TO PROPERTY LINE.
 7. NOTIFY ALL AFFECTED RESIDENTS AND BUSINESSES 24 HOURS IN ADVANCE OF ANY WATER SHUTDOWN OR DISRUPTION OF SERVICE.
 8. LOCATION OF WATER SERVICES SHOWN ON DRAWINGS ARE APPROXIMATE. THE CONTRACTOR SHALL FIELD LOCATE ALL WATER SERVICES PRIOR TO CONSTRUCTION.
 9. ALL VALVES SHALL BE RED TOP (COUNTER CLOCKWISE TO CLOSE).
 10. BACKFILL UNDER OR WITHIN 1.0m OF PAVEMENTS, INCLUDING SIDEWALKS SHALL BE CLASS 3 BACKFILL EXCEPT AS NOTED. BACKFILL IN BOULEVARDS SHALL BE CLASS 5 BACKFILL.



ADDRESS	NATURE OF SERVICE	SIZE	MATERIAL	DISTANCE SC TO PROPERTY	POSITION OF SC (curb stop)	POSITION OF CC (corp)	COMMENTS:
230 LENORE ST	RESIDENTIAL	19 mm	COPPER	0.3 m	Long 54.9 m S of SL Short 0.3 m S of INL	PORTAGE BASEMENT	CPLG TIE OF SC
229 LENORE ST	RESIDENTIAL	19 mm	COPPER	0.3 m	Long 7.6 m N of INL Short 0.9 m S of INL	PRESTON HOUSE	
228 LENORE ST	RESIDENTIAL	19 mm	COPPER	0.3 m	Long 64.9 m S of INL Short 2.1 m S of INL	PORTAGE HOUSE	
224 LENORE ST	RESIDENTIAL	19 mm	COPPER	0.3 m	Long 29.3 m N of INL Short 0.6 m S of INL	PRESTON HOUSE	L.O.P. REPAIRED LEAK @ SC WITH 1" OF 3/4" COPPER PIPE & COUPLING
222 LENORE ST	RESIDENTIAL	19 mm	COPPER	0.3 m	Long 17.7 m N of INL Short 2.4 m S of INL	PRESTON HOUSE	
220 LENORE ST	RESIDENTIAL	19 mm	COPPER	0.3 m	Long 7.0 m N of INL Short 1.8 m S of INL	PRESTON HOUSE	
218 LENORE ST	RESIDENTIAL	19 mm	COPPER	0.5 m	Long 3.0 m S of SL Short 1.4 m S of INL	PRESTON HOUSE	
215 LENORE ST	RESIDENTIAL	19 mm	COPPER	0.6 m	Long 6.7 m S of SL Short 4.0 m S of INL	PRESTON HOUSE	

ADDRESS	NATURE OF SERVICE	SIZE	MATERIAL	DISTANCE SC TO PROPERTY	POSITION OF SC (curb stop)	POSITION OF CC (corp)	COMMENTS:
930 PORTAGE AVE	COMMERCIAL	38 mm	COPPER	0.8 m	Long 23.3 m S of SL Short 5.2 m N of SL	PORTAGE BLDG	CPLG 18'E SC CPLG 38'E SC
912 PORTAGE AVE	COMMERCIAL	50 mm	COPPER	0.8 m	Long 24.4 m S of SL Short 4.7 m N of SL	PORTAGE BLDG	
243 LENORE ST	RESIDENTIAL	13 mm	COPPER	0.3 m	Long 39.0 m S of SL Short 3.0 m N of SL	PORTAGE HOUSE	3/4" TO 1/2" ADAPTER 10 FT W/F STOP
239 LENORE ST	RESIDENTIAL	13 mm	COPPER	0.3 m	Long 48.2 m S of SL Short 0.9 m S of SL	PORTAGE CENTRE OF BASEMENT	
237 LENORE ST	RESIDENTIAL	13 mm	COPPER	0.3 m	Long 45.7 m N of INL Short 0.9 m S of INL	PRESTON CENTRE OF BASEMENT	
235 LENORE ST	RESIDENTIAL	19 mm	COPPER	0.5 m	Long 0.6 m N of INL Short 0.6 m N of INL	OF 233	DOUBLE W/ 233 SC
233 LENORE ST	RESIDENTIAL	19 mm	COPPER	1.4 m	Long 0.3 m N of INL Short 0.3 m N of INL	OF 233	DOUBLE W/ 235 SC
231 LENORE ST	RESIDENTIAL	13 mm	COPPER	0.3 m	Long 17.4 m N of INL Short 2.7 m S of INL	PRESTON BASEMENT	

EXISTING	LEGEND - PLAN	PROPOSED	EXISTING	LEGEND - PROFILE	PROPOSED
150 mm W.M.	WATERMAIN	150 mm W.M.	HYDRANT	HYDRANT	
300mm L.D.S.	LAND DRAINAGE SEWER	300mm L.D.S.	VALVE	VALVE	
250mm W.W.S.	WASTEWATER SEWER	250mm W.W.S.	CONCRETE	CONCRETE	
	MANHOLE		ASPHALT	ASPHALT	
	CATCH BASIN		PROPERTY LINE	PROPERTY LINE	
	CURB INLET		SURVEY BAR	SURVEY BAR	
	JUNCTIONS		CURB STOP	CURB STOP	
	CULVERT		TREE	TREE	
	GAS		ANODE	ANODE	
			CONCRETE SIDEWALK	CONCRETE SIDEWALK	
			FENCE	FENCE	

LOCATION APPROVED UNDERGROUND STRUCTURES

SUPV. U/G STRUCTURES DATE COMMITTEE

NOTE:
LOCATION OF UNDERGROUND STRUCTURES AS SHOWN ARE BASED ON THE BEST INFORMATION AVAILABLE. BUT NO GUARANTEE IS GIVEN THAT ALL EXISTING UTILITIES ARE SHOWN OR THAT THE GIVEN LOCATIONS ARE EXACT. CONFIRMATION OF EXISTENCE AND EXACT LOCATION OF ALL SERVICES MUST BE OBTAINED FROM THE INDIVIDUAL UTILITIES BEFORE PROCEEDING WITH CONSTRUCTION.

NO.	REVISIONS	DATE	BY
B	ISSUED FOR TENDER	2007/05/31	GSK
A	ISSUED FOR REVIEW	2006/05/26	GSK

EARTH TECH
A tyco INTERNATIONAL LTD. COMPANY
Earth Tech (Canada) Inc. Winnipeg, Manitoba 204-477-5381

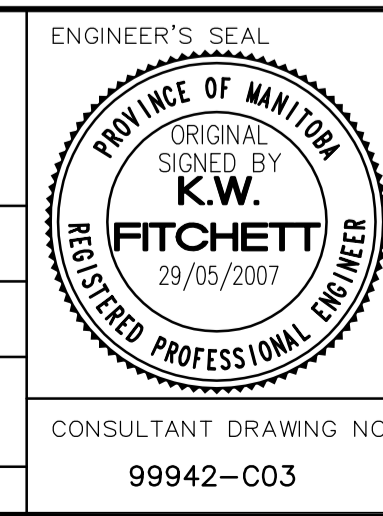
DESIGNED BY: GSK, GDL
CHECKED BY: GSK

DRAWN BY: GDL
APPROVED BY:

HOR. SCALE: 1:250
VERTICAL SCALE: 1:50

RELEASED FOR CONSTRUCTION BY: K. ZUREK

DATE: 2007/04/11
DATE: 2007/05/31



THE CITY OF WINNIPEG
Winnipeg WATER AND WASTE DEPARTMENT

2007 WATERMAIN RENEWALS CONTRACT 6

LENORE STREET
WESTMINSTER AVENUE TO PORTAGE AVENUE
STA. 3+20 TO PORTAGE AVENUE

SHEET OF 3 8
CITY DRAWING NUMBER D-9173

CONSULTANT DRAWING NO. 99942-C03