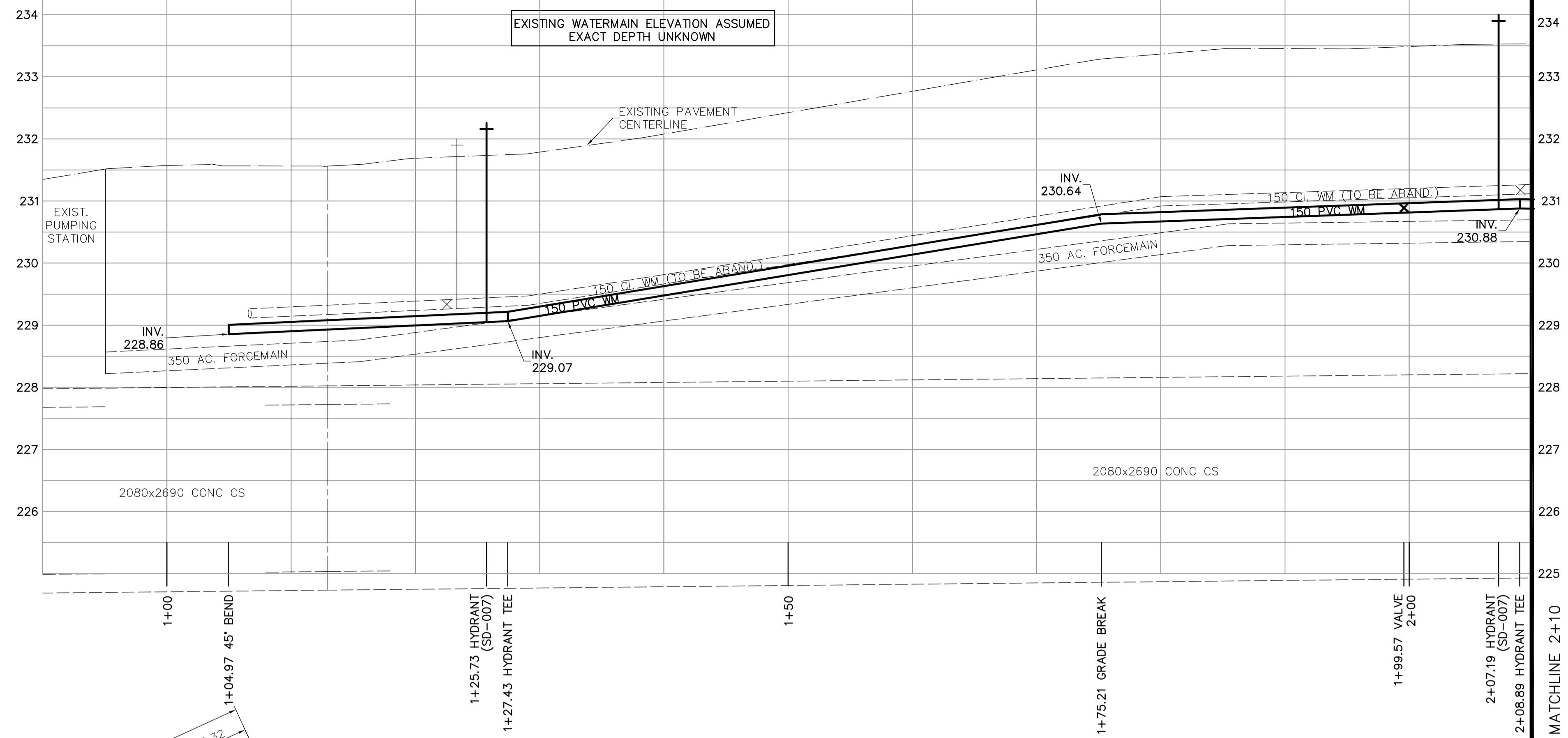
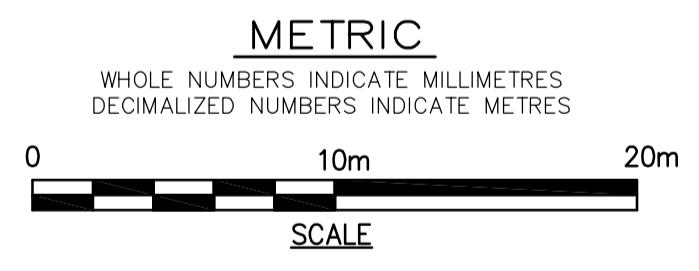
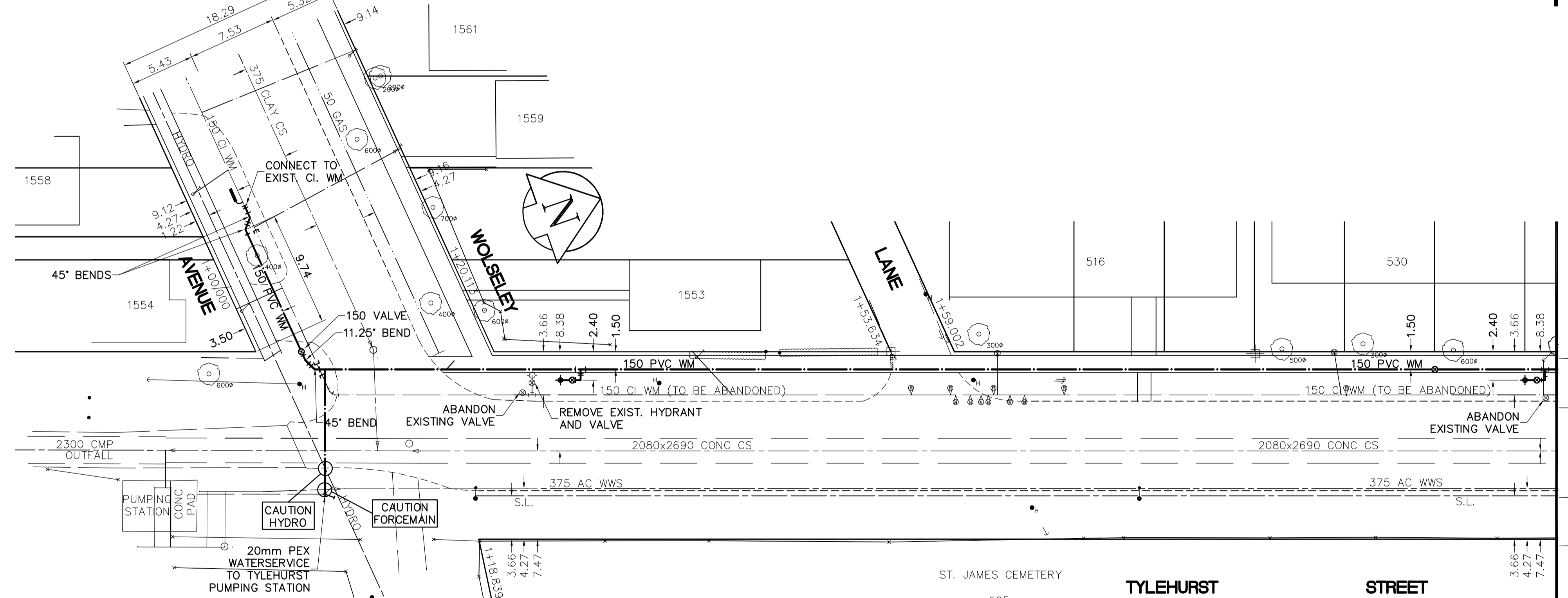


SHEET: COW-WM-A1 (11/2002) FILE NAME: L:\Work\9994\9994\200-CAD\UID\Cow\99942-C06.dwg LAYOUT NAME: Layout1 PLOTTED BY: gerald.loskocze May 31, 2007 - 11:33am



- CONSTRUCTION NOTES**
1. EXPOSE WATERMAIN CONNECTIONS AND CONFIRM INVERTS PRIOR TO CONSTRUCTION.
 2. INSTALL WATERMAIN BY TRENCHLESS METHODS.
 3. ALL MATERIALS SHALL CONFORM TO THE CITY OF WINNIPEG STANDARD CONSTRUCTION SPECIFICATIONS.
 4. MINIMUM COVER TO TOP OF PROPOSED WATERMAIN SHALL BE 2.5m FROM STREET CENTERLINE.
 5. INSTALL ALL HYDRANTS WITH FLANGE ELEVATION 50mm- 150mm ABOVE FINISHED GRADE.
 6. REPLACE ALL EXISTING LEAD SERVICES FROM THE PROPOSED WATERMAIN TO PROPERTY LINE.
 7. NOTIFY ALL AFFECTED RESIDENTS AND BUSINESSES 24 HOURS IN ADVANCE OF ANY WATER SHUTDOWN OR DISRUPTION OF SERVICE.
 8. LOCATION OF WATER SERVICES SHOWN ON DRAWINGS ARE APPROXIMATE. THE CONTRACTOR SHALL FIELD LOCATE ALL WATER SERVICES PRIOR TO CONSTRUCTION.
 9. ALL VALVES SHALL BE RED TOP (COUNTER CLOCKWISE TO CLOSE).
 10. BACKFILL UNDER OR WITHIN 1.0m OF PAVEMENTS, INCLUDING SIDEWALKS SHALL BE CLASS 3 BACKFILL EXCEPT AS NOTED. BACKFILL IN BOULEVARDS SHALL BE CLASS 5 BACKFILL.



ADDRESS	NATURE OF SERVICE	SIZE	MATERIAL	DISTANCE SC TO PROPERTY	POSITION OF SC (curb stop)	POSITION OF CC (corp)	COMMENTS
501 TYLERHURST ST	NOT IN USE	10 mm	LEAD	0.3 m	Long: 9.4 m S of NL WOLSELEY OF FENCE Short: 1.5 m S of NL TYLERHURST	Long: of of Short: of of	TYLERHURST PUMPING STATION RENEW TO PL W/ 20mm PEX
465 TYLERHURST ST	COMMERCIAL	10 mm	COPPER	0.3 m	Long: 13.4 m E of NL TYLERHURST Short: 13.1 m N of NL BRICK WALL	Long: of of Short: of of	
1559 WOLSELEY AVE	RESIDENTIAL	19 mm	COPPER	0.5 m	Long: 18.9 m N of NL TYLERHURST Short: 0.6 m N of EL HOUSE	Long: of of Short: 0.9 m E of SC	
1558 WOLSELEY AVE	RESIDENTIAL	19 mm	COPPER	0.3 m	Long: 14.6 m N of NL TYLERHURST Short: 2.7 m N of EL HOUSE	Long: of of Short: 0.3 m N of SC	
1554 WOLSELEY AVE	RESIDENTIAL	13 mm	COPPER	0.3 m	Long: 4.0 m N of NL TYLERHURST Short: 3.0 m N of EL HOUSE	Long: of of Short: OPP of SC	
1553 WOLSELEY AVE	RESIDENTIAL	19 mm	COPPER	0.3 m	Long: 16.8 m N of NL WOLSELEY Short: 3.5 m N of SL HOUSE	Long: of of Short: 0.6 m S of SC	SERVICED OFF TYLERHURST

ADDRESS	NATURE OF SERVICE	SIZE	MATERIAL	DISTANCE SC TO PROPERTY	POSITION OF SC (curb stop)	POSITION OF CC (corp)	COMMENTS
530 TYLERHURST ST	NOT IN USE	13 mm	LEAD	0.3 m	Long: 88.4 m N of NL WOLSELEY Short: 2.7 m S of SL OF HOUSE	Long: 1.5 m S of SC Short: of of	
522 TYLERHURST ST	RESIDENTIAL	38 mm	COPPER	0.3 m	Long: 70.7 m N of NL WOLSELEY Short: 5.2 m N of SL OF BUILDING	Long: of SC Short: 0.6 m N of SC	
520 TYLERHURST ST	NOT IN USE	13 mm	LEAD	0.3 m	Long: 69.5 m N of NL WOLSELEY Short: 0.3 m N of NL FRONT DOOR	Long: of SC Short: 2.4 m S of SC	
516 TYLERHURST ST	RESIDENTIAL	38 mm	COPPER	0.3 m	Long: 42.4 m N of NL WOLSELEY Short: 4.0 m N of SL OF BUILDING	Long: of SC Short: OPP of SC	CPLG 3 FROM MAIN
514 TYLERHURST ST	COMMERCIAL	13 mm	LEAD	0.8 m	Long: 41.8 m N of NL WOLSELEY Short: 2.6 m N of SL OF HOUSE	Long: of SC Short: 0.6 m N of SC	
509 TYLERHURST ST	NOT IN USE	19 mm	LEAD	1.8 m	Long: 9.8 m N of SL WOLSELEY Short: 1.4 m S of TST POST CEM FENCE	Long: of SC Short: 4.9 m S of SL	

EXISTING	LEGEND - PLAN	PROPOSED	EXISTING	LEGEND - PROFILE	PROPOSED
	WATERMAIN			HYDRO	
	VALVE			TELEPHONE	
	CONCRETE			ASPHALT	
	PROPERTY LINE			SURVEY BAR	
	CATCH BASIN			CURB STOP	
	CURB INLET			TREE	
	JUNCTIONS			ANODE	
	CULVERT			CONCRETE SIDEWALK	
	GAS			FENCE	

LOCATION APPROVED UNDERGROUND STRUCTURES

SUPV. U/G STRUCTURES DATE COMMITTEE

NOTE:
LOCATION OF UNDERGROUND STRUCTURES AS SHOWN ARE BASED ON THE BEST INFORMATION AVAILABLE. BUT NO GUARANTEE IS GIVEN THAT ALL EXISTING UTILITIES ARE SHOWN OR THAT THE GIVEN LOCATIONS ARE EXACT. CONFIRMATION OF EXISTENCE AND EXACT LOCATION OF ALL SERVICES MUST BE OBTAINED FROM THE INDIVIDUAL UTILITIES BEFORE PROCEEDING WITH CONSTRUCTION.

B.M. ELEV. 37-007 233.618
S.E. corner Portage Ave. & Tyhurst St. Brass plug in 8.5m Conc. pile, 2.35m N. of chainlink fence & 0.7m E. of same fence produced from the S. (enclosing St. James Anglican Cemetery) or 0.4m S. of S. edge & on line of W. edge of Conc. base of traffic light standard on S.E. Cor. Portage Ave. & Tyhurst St.

EARTH TECH
A tyco INTERNATIONAL LTD. COMPANY
Earth Tech (Canada) Inc. Winnipeg, Manitoba 204-477-5381

DESIGNED BY: GSK, GDL
CHECKED BY: GSK

DRAWN BY: GDL
APPROVED BY:

HOR. SCALE: 1:250
VERTICAL SCALE: 1:50

RELEASED FOR CONSTRUCTION BY: K. ZUREK

DATE: 2007/04/11
DATE: 2007/05/31



THE CITY OF WINNIPEG
Winnipeg WATER AND WASTE DEPARTMENT

2007 WATERMAIN RENEWALS CONTRACT 6

TYLERHURST STREET
WOLSELEY AVENUE TO PORTAGE AVENUE
WOLSELEY AVENUE TO STA. 2+10

SHEET 6 OF 8
CITY DRAWING NUMBER D-9176

CONSULTANT DRAWING NO. 99942-C06