

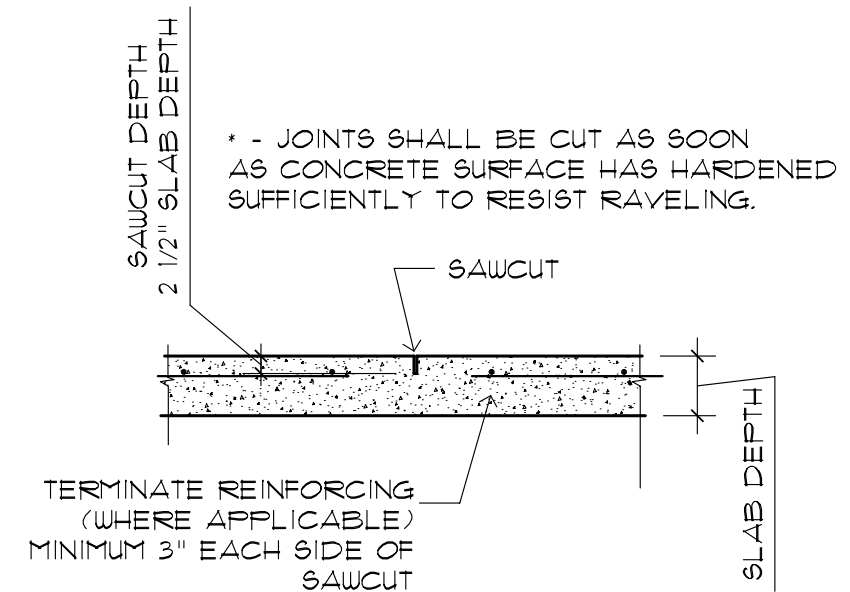
**PARTIAL MAIN FLOOR FRAMING PLAN**  
SCALE 1/16" = 1'-0"

**NOTES:**  
#1. SEE DWG. S1.2 FOR O.H. DOOR FRAMING

**APEGN**  
Certificate of Authorization  
Kowalchuk Consulting Engineers Ltd.  
No. 1777 Date: \_\_\_\_\_

- 1 48" WIDE - 6" VOID FORM
- 2 8" CONCRETE APRON SLAB ON MIN. 6" COMPACTED GRANULAR R/W 15M @ 18" EACH WAY TOP
- 3 SAWCUTS @ DOORWAYS AND AS SHOWN

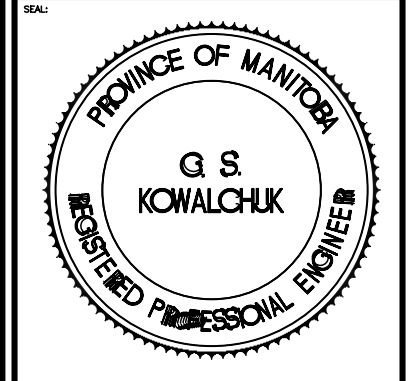
**NOTE:**  
PROVIDE NON METALLIC FLOOR HARDENER TO INTERIOR SLABS AT A RATE 8 kg/m<sup>2</sup>. ACCEPTABLE PRODUCTS STERNSON DIAMAG 1. PROVIDE SURFACE SEALER AFTER SLAB IS CURED. ALL PRODUCTS TO BE APPLIED IN ACCORDANCE TO MANUFACTURERS RECOMMENDATION



**A TYPICAL SAWCUT DETAIL**  
S-1.1 3/4" = 1'-0"

**DESIGN LOADS**  
LIVE LOAD = 250 psf  
OR CONCENTRATED LOAD OF 21,000 POUNDS

0	ISSUED FOR TENDER	MAY 11, 2007	CML
REV	DESCRIPTION	DATE	BY



THIS DRAWING MUST NOT BE SCALED.  
THE GENERAL CONTRACTOR SHALL VERIFY ALL DIMENSIONS, DATUMS AND LEVELS PRIOR TO COMMENCEMENT OF WORK AND IS HELD RESPONSIBLE FOR REPORTING ANY DISCREPANCY OR OMISSION TO NEIL COOPER ARCHITECT INC IMMEDIATELY.  
THIS DRAWING IS THE EXCLUSIVE PROPERTY OF NEIL COOPER ARCHITECT INC AND CAN BE REPRODUCED ONLY WITH THE PERMISSION OF NEIL COOPER ARCHITECT INC. IN WHICH CASE THE REPRODUCTION MUST BEAR THEIR NAME AS THE ARCHITECTURAL FIRM.

**DRAWING:**  
PARTIAL MAIN FLOOR FRAMING PLAN  
**PROJECT:**  
195 TECUMSEH  
O/H DOOR & CONCRETE SLAB REPLACEMENT  
WINNIPEG, MANITOBA

Neil Cooper Architect Inc.  
10-395 Berry Street, Winnipeg, Manitoba R3J 1N6

**Kowalchuk**  
Consulting Engineers Ltd.

DRAWN BY: DC	CHECKED BY: GSK	SHEET NO: <b>S1.1</b>	REV NO: <b>R0</b>
DATE: MAY, 09, 2007	SCALE: 1/16" = 1'-0"		
FILE: Projects\2007\07065\07065-S1.dwg			