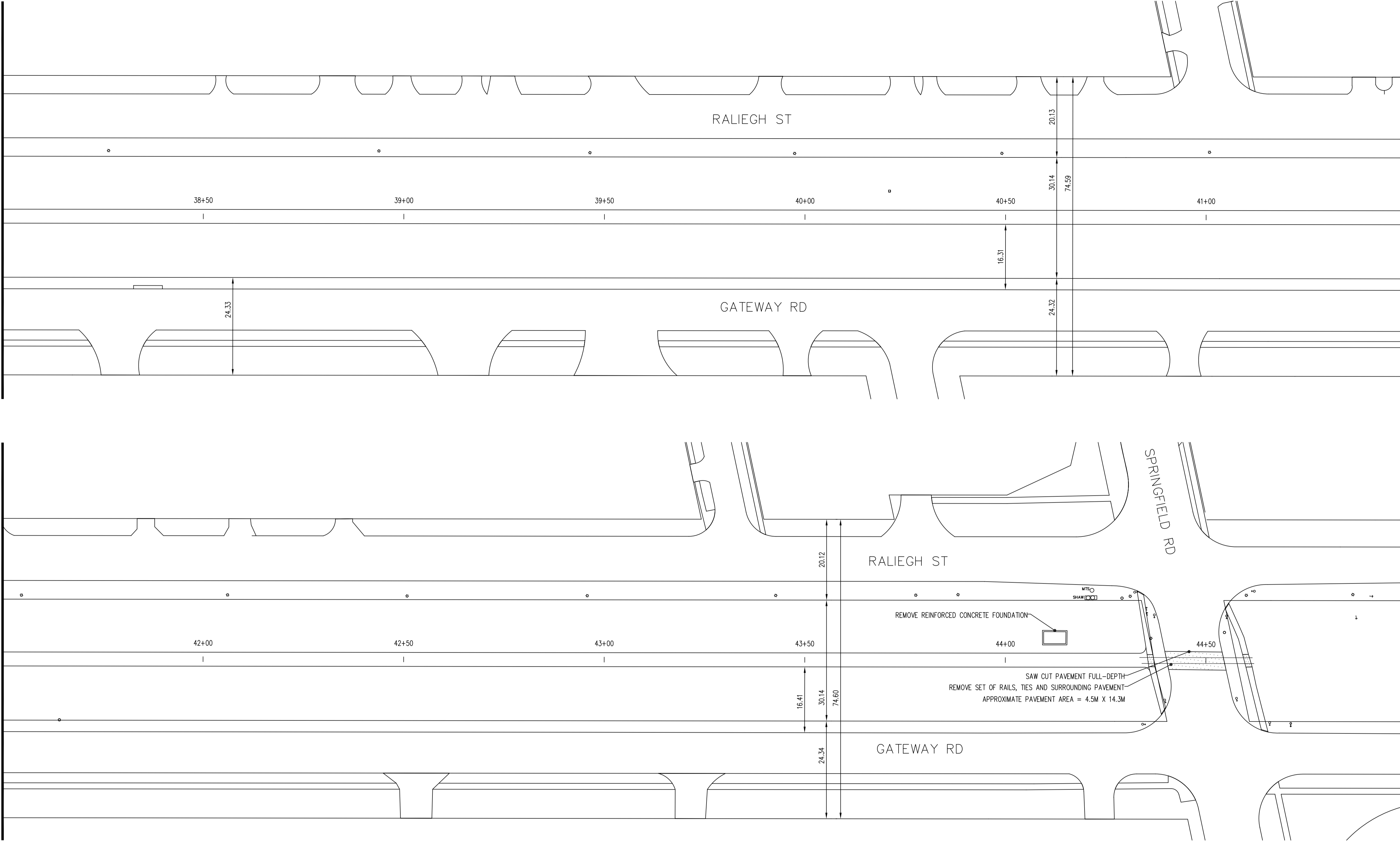


MATCHLINE STA 38+00

MATCHLINE STA 41+50

MATCHLINE STA 41+50



- CONSTRUCTION NOTES**
- 1) CURB REPLACEMENT AS DIRECTED BY THE CONTRACT ADMINISTRATOR
  - 2) ALL STREET RADIUS CURB UNDER 15M RADIUS SHALL BE REPLACED AS MODIFIED OR AS DIRECTED BY THE CONTRACT ADMINISTRATOR
  - 3) PAVEMENT REPAIRS SHOWN ARE ONLY A REPRESENTATIVE SAMPLE OF THE TENDERED QUANTITIES
  - 4) ASPHALT TIE-INS ON APPROACHES TO BE DETERMINED IN THE FIELD BY THE CONTRACT ADMINISTRATOR.
  - 5) ALL BULLNOSES TO HAVE SLOPED FACE.

**WARNING**

IF POWER EQUIPMENT OR EXPLOSIVES ARE TO BE USED FOR EXCAVATION ON THIS PROJECT THE CONTRACTOR MUST:

- 1) OBTAIN CLEARANCE FROM THE GAS UTILITY PRIOR TO EXCAVATION.
- 2) TAKE PRECAUTION TO AVOID DAMAGE TO GAS UTILITY INSTALLATIONS.

SEE PROVINCIAL REGULATION 210/72 FOR DETAILS

**METRIC**  
WHOLE NUMBERS INDICATE MILLIMETRES  
DECIMALIZED NUMBERS INDICATE METRES

BID OPPORTUNITY NO. 419-2007

150 mm WM	WATERMAIN	150 mm WM	HYDRO	GUY WIRE	LOCATION APPROVED
⊕	HYDRANT	⊕	MTS	O.L.S.	UNDERGROUND STRUCTURES
⊖	VALVE	⊖	GAS	BILLBOARD SIGN	
—●—	CHAIN LINK FENCE	—●—	ASPHALT PAVEMENT	BUSH	
—○—	WOOD BOLLARD	—○—	CURB RENEWAL	FOOT PATH	
—□—	CONCRETE SIDEWALK	—□—	ELEVATIONS		
○	MANHOLE	○	PROPERTY LINE		
□	CATCH BASIN	□	SURVEY BAR		
△	CURB INLET	△	GEODETIC BENCH MARK		
☆	HYDRO POLE	☆	RAMP CURB		
⊕	TRAFFIC SIGNAL POLE	⊕	GUARD RAIL		
EXISTING	LEGEND — PLAN	PROPOSED	EXISTING	LEGEND — PLAN	PROPOSED

**LOCATION APPROVED**  
UNDERGROUND STRUCTURES

NO. | REVISIONS | DATE | BY

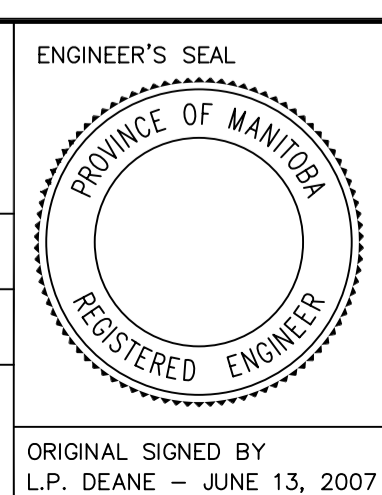
NOTE:  
LOCATION OF UNDERGROUND STRUCTURES AS SHOWN ARE BASED ON THE BEST INFORMATION AVAILABLE, BUT NO GUARANTEE IS GIVEN THAT ALL EXISTING UTILITIES ARE SHOWN OR THAT THE GIVEN LOCATIONS ARE EXACT. CONFIRMATION OF EXISTENCE AND EXACT LOCATION OF ALL SERVICES MUST BE OBTAINED FROM THE INDIVIDUAL UTILITIES BEFORE PROCEEDING WITH CONSTRUCTION.

B.M. ELEV.	GBM 12-058	230.554
DESIGNED BY	B.K.	CHECKED BY
DRAWN BY	R.M. / G.C.	APPROVED BY
HOR. SCALE:	1 : 500	
VERTICAL:	1 : 5	
DATE	2007/04/18	

**TRANSPORTATION ENGINEERING DIVISION**  
**TECHNOLOGY SERVICES BRANCH**  
106 - 1155 PACIFIC AVE

DESIGNED BY: B.K.  
CHECKED BY: G.C. / B.K.  
APPROVED BY: B.K.

HOR. SCALE: 1 : 500  
VERTICAL: 1 : 5  
DATE: 2007/04/18



**THE CITY OF WINNIPEG**  
PUBLIC WORKS DEPARTMENT

**MARCONI TRAIL**  
FROM HERBERT AVENUE TO SPRINGFIELD ROAD  
PEDESTRIAN CYCLE FACILITY AND ASSOCIATED WORKS  
FROM STA. 38+00 TO STA. 45+00

CITY DRAWING NUMBER SE-07-25  
SHEET 7 OF 7

7