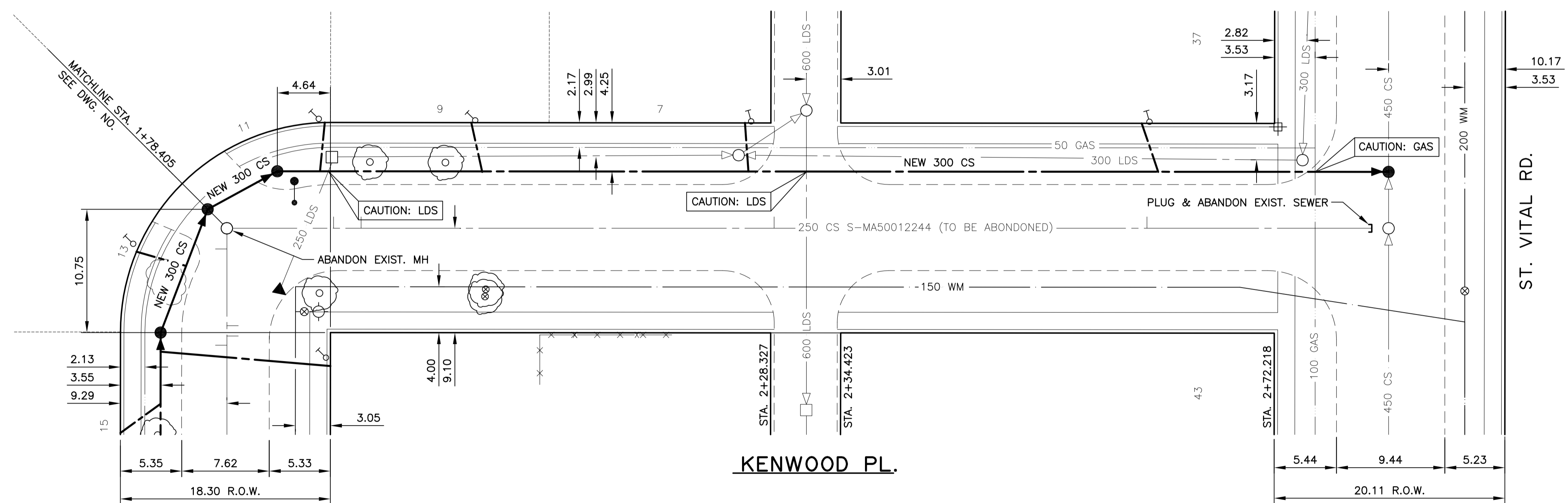


CONSTRUCTION NOTES:

1. ALL PVC PIPE SHALL HAVE CLASS B-TYPE 2 BEDDING AND ALL CONCRETE PIPE SHALL HAVE CLASS B-SAND BEDDING.
2. SEWER TO BE RENEWED BY TRENCHLESS METHODS.
3. CONFIRM THE LOCATION OF ALL SEWER SERVICES.
4. RENEW SEWER SERVICES TO PROPERTY LINE.
5. BACKFILL UNDER PAVEMENT, IN SIDEWALKS, & WITHIN 1.0 OF PAVEMENT TO BE CLASS 3.
6. BACKFILL IN BOULEVARD TO BE CLASS 5.
7. CATCHBASIN LEADS TO BE INSTALLED AT MIN. 1.0% SLOPE OR AS DIRECTED BY CONTRACT ADMINISTRATOR.
8. EXCAVATIONS TO BE LOCATED AWAY FROM EXISTING TREES

NOTE: CHAINAGES SHOWN ARE ALONG EAST PL KENWOOD PL.



SEWER SERVICE INFORMATION (S-MA50012244) *	
DISTANCE FROM MH AT KENWOOD (E LEG) (S-MH50009839)	
9.3 S	SERVICE CONNECTION E
11.7 S	SERVICE CONNECTION E
47.7 S	SERVICE CONNECTION E
80.2 S	SERVICE CONNECTION E

* - INFORMATION FROM SEWER VIDEO INSPECTION

EXISTING SEWER SERVICE LOCATION RECORDS		
ADDRESS	SIZE/TYPE	SERVICE LOCATION AT PL
NO RECORDS	INFO NOT AVAILABLE	INFO NOT AVAILABLE

* LOCATION OF SEWER SERVICE AT ? IS ASSUMED

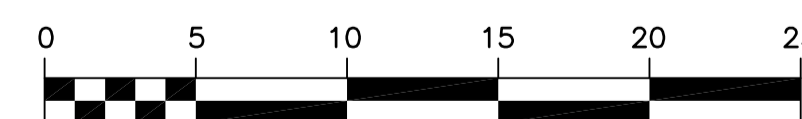
WARNING

IF POWER EQUIPMENT OR EXPLOSIVES ARE TO BE USED FOR EXCAVATION ON THIS PROJECT THE CONTRACTOR MUST:

1. NOTIFY THE GAS COMPANY OF THE PROPOSED LOCATION OF EXCAVATION.
2. TAKE PRECAUTION TO AVOID DAMAGE TO GAS COMPANY INSTALLATIONS SEE PROVINCIAL REGULATION 210/72 FOR DETAILS

METRIC

WHOLE NUMBERS INDICATE MILLIMETRES
DECIMALIZED NUMBERS INDICATE METRES



150 mm W.M.	150 mm W.M.	150 mm W.M.	150 mm W.M.	150 mm W.M.	150 mm W.M.	150 mm W.M.	150 mm W.M.	150 mm W.M.	150 mm W.M.
WATERMAIN	HYDRANT VALVE	CONCRETE	ASPHALT	PROPERTY LINE	SURVEY BAR	SERVICE VALVE	TREE	LIGHT STANDARD	FENCE
300 mm L.D.S.	LAND DRAINAGE SEWER	300 mm L.D.S.	LAND DRAINAGE SEWER	250 mm W.W.S.	250 mm W.W.S.	250 mm W.W.S.	250 mm W.W.S.	250 mm W.W.S.	250 mm W.W.S.
MANHOLE	CATCH BASIN	CURB INLET	JUNCTIONS	CULVERT	GAS	EXISTING	LEGEND-PLAN	PROPOSED	EXISTING
HYDRO	M.T.S.	CONCRETE	ASPHALT	PROPERTY LINE	SURVEY BAR	SERVICE VALVE	TREE	LIGHT STANDARD	FENCE
WATERMAIN	HYDRANT VALVE	CONCRETE	ASPHALT	PROPERTY LINE	SURVEY BAR	SERVICE VALVE	TREE	LIGHT STANDARD	FENCE
300 mm L.D.S.	LAND DRAINAGE SEWER	300 mm L.D.S.	LAND DRAINAGE SEWER	250 mm W.W.S.	250 mm W.W.S.	250 mm W.W.S.	250 mm W.W.S.	250 mm W.W.S.	250 mm W.W.S.
MANHOLE	CATCH BASIN	CURB INLET	JUNCTIONS	CULVERT	GAS	EXISTING	LEGEND-PROFILE	PROPOSED	EXISTING

UNDERGROUND STRUCTURES	B.M. ELEV.
SUPV. U/G STRUCTURES COMMITTEE	DATE
NOTE:	LOCATION OF UNDERGROUND STRUCTURES AS SHOWN ARE BASED ON THE BEST INFORMATION AVAILABLE, BUT NO GUARANTEE IS GIVEN THAT ALL EXISTING UTILITIES ARE SHOWN OR THAT THE GIVEN LOCATIONS ARE EXACT. CONFIRMATION OF EXISTENCE AND EXACT LOCATION OF ALL SERVICES MUST BE OBTAINED FROM THE INDIVIDUAL UTILITIES BEFORE PROCEEDING WITH CONSTRUCTION.

DESIGNED BY	CLP
DRAWN BY	SKB
CHECKED BY	SCC
APPROVED BY	
HOR. SCALE	1 : 250
VERTICAL	1 : 50
1 ISSUED FOR TENDER	06/28/07 SCC
NO. REVISIONS	DATE BY
	DATE JUNE 27, 2007

DILLON CONSULTING

RELEASED FOR CONSTRUCTION ORIGINAL SIGNED BY KAS ZUREK, P. Eng.

ENGINEER'S SEAL

PROVINCE OF MANITOBA

D.P. KRAHN

06/28/07

Member 4226

REGISTERED PROFESSIONAL ENGINEER

CONSULTANT PROJECT NO. 07-7471-1000

THE CITY OF WINNIPEG
WATER AND WASTE DEPARTMENT

2007 SEWER RENEWALS
KENWOOD PLACE
MH AT KENWOOD PL. (E LEG) TO
MH AT ST. VITAL RD.

CITY DRAWING NUMBER
06073

SHEET 5 OF 13

BID OPPORTUNITY
422-2007