

CONSTRUCTION NOTES:

1. ALL PVC PIPE SHALL HAVE CLASS B-TYPE 2 BEDDING AND ALL CONCRETE PIPE SHALL HAVE CLASS B-SAND BEDDING.
2. SEWER TO BE RENEWED BY TRENCHLESS METHODS.
3. CONFIRM THE LOCATION OF ALL SEWER SERVICES.
4. RENEW SEWER SERVICES TO PROPERTY LINE.
5. BACKFILL UNDER PAVEMENT, IN SIDEWALKS, & WITHIN 1.0 OF PAVEMENT TO BE CLASS 3.
6. BACKFILL IN BOULEVARD TO BE CLASS 5.
7. CATCHBASIN LEADS TO BE INSTALLED AT MIN. 1.0% SLOPE OR AS DIRECTED BY CONTRACT ADMINISTRATOR.

GENERAL NOTES

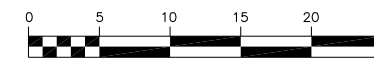
1. CONTRACTOR TO VERIFY LIMITS OF SEWER REPAIRS PRIOR TO EXCAVATION BY MEANS OF VIDEO INSPECTION.
2. PROVIDE VIDEO INSPECTION OF ALL SEWER SERVICES WITHIN LIMITS OF REPAIR IN PRESENCE OF CONTRACT ADMINISTRATOR TO DETERMINE IF SERVICE RENEWAL IS REQUIRED.

EXISTING SEWER SERVICE LOCATION RECORDS		
ADDRESS	SIZE/TYPE	SERVICE LOCATION AT PL
NO RECORDS	INFO NOT AVAILABLE	INFO NOT AVAILABLE

* LOCATION OF SEWER SERVICE AT ? IS ASSUMED

SEWER SERVICE INFORMATION (S-MA50017959) *	
DISTANCE FROM 1ST MH E OF ST. DAVID RD (S-MH50014473)	
89.7 E	SERVICE CONNECTION S
98.2 E	SERVICE CONNECTION S
107.0 E	SERVICE CONNECTION N
116.3 E	SERVICE CONNECTION N
126.9 E	SERVICE CONNECTION N
131.1 E	SERVICE CONNECTION N
136.9 E	SERVICE CONNECTION S

* - INFORMATION FROM SEWER VIDEO INSPECTION



WARNING

IF POWER EQUIPMENT OR EXPLOSIVES ARE TO BE USED FOR EXCAVATION ON THIS PROJECT THE CONTRACTOR MUST:

1. NOTIFY THE GAS COMPANY OF THE PROPOSED LOCATION OF EXCAVATION.
2. TAKE PRECAUTION TO AVOID DAMAGE TO GAS COMPANY INSTALLATIONS SEE PROVINCIAL REGULATION 210/72 FOR DETAILS

METRIC

WHOLE NUMBERS INDICATE MILLIMETRES
DECIMALIZED NUMBERS INDICATE METRES

150 mm W.M.	WATERMAIN	150 mm W.M.	HYDRO	150 mm W.M.	WATERMAIN	150 mm W.M.
	HYDRANT		M.T.S.		CONCRETE	
	LAND DRAINAGE SEWER		PROPERTY LINE		SURVEY BAR	
	CATCH BASIN		SERVICE VALVE		I.P.S.	
	JUNCTIONS		BUILDING			
	GAS					
EXISTING	LEGEND-PLAN	PROPOSED	EXISTING	LEGEND-PLAN	PROPOSED	EXISTING

UNDERGROUND STRUCTURES

SUPV. U/G STRUCTURES COMMITTEE DATE

NOTE:
LOCATION OF UNDERGROUND STRUCTURES AS SHOWN ARE BASED ON THE BEST INFORMATION AVAILABLE BUT NO GUARANTEE IS GIVEN THAT ALL EXISTING UTILITIES ARE SHOWN OR THAT THE GIVEN LOCATIONS ARE EXACT. CONFIRMATION OF EXISTENCE AND EXACT LOCATION OF ALL SERVICES MUST BE OBTAINED FROM THE INDIVIDUAL UTILITIES BEFORE PROCEEDING WITH CONSTRUCTION.

B.M. ELEV.	DESIGNED BY	DATE
	C.L.P.	
	DRAWN BY	A.J.P.
	CHECKED BY	S.C.C.
	APPROVED BY	
	HOR. SCALE	1:500
	VERTICAL	
1	ISSUED FOR TENDER	06/28/07
NO.	REVISIONS	DATE
		BY
		DATE
		JUNE 27, 2007

DILLON CONSULTING

RELEASED FOR CONSTRUCTION
ORIGINAL SIGNED BY
KAS ZUREK, P. Eng.

ENGINEER'S SEAL

PROVINCE OF MANITOBA
D.P. KRAHN
06/28/07
Member 4226

CONSULTANT PROJECT NO.
07-7471-1000

THE CITY OF WINNIPEG
WATER AND WASTE DEPARTMENT

2007 SEWER REPAIRS
HAVELOCK AVENUE
1ST MH W OF ST. GEORGE RD. TO
MH AT ST. GEORGE RD.

CITY DRAWING NUMBER
06078
SHEET 10 OF 13

BID OPPORTUNITY
422-2007