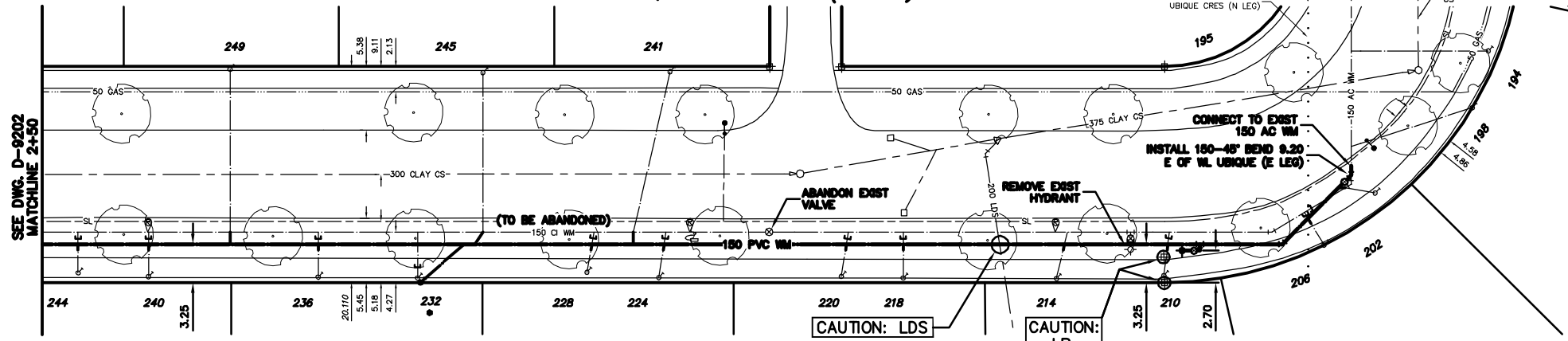


NOTE: CHAINAGES SHOWN ARE ALONG E. R. OF UBUIQUE CRES.

UBUIQUE CRESCENT (E LEG)



UBUIQUE CRES (N LEG)



- CONSTRUCTION NOTES**
1. EXPOSE EXISTING WATERMAIN & CONFIRM INVERTS PRIOR TO CONSTRUCTION.
 2. CONFIRM LOCATION OF ALL SERVICES IN THE FIELD.
 3. INSTALL WATERMAIN BY TRENCHLESS METHODS.
 4. TRENCHES AND EXCAVATIONS WITHIN 1 METRE OF A PAVED AREA INCLUDING SIDEWALKS SHALL BE CLASS 3 BACKFILL.
 5. ALL MATERIALS SHALL CONFORM TO THE CITY OF WINNIPEG STANDARD CONSTRUCTION SPECIFICATIONS.
 6. MINIMUM COVER TO TOP OF WATERMAIN SHALL BE 2.4 m.
 7. REPLACE ALL EXISTING LEAD SERVICES FROM PROPOSED WATERMAIN TO R.
 8. NOTIFY ALL AFFECTED RESIDENTS AND BUSINESSES 24 HOURS IN ADVANCE OF ANY WATER SHUTDOWNS OR DISRUPTION OF SERVICE.
 9. EXCAVATIONS TO BE LOCATED AWAY FROM EXISTING TREE'S.

WATER SERVICE INFORMATION

ADDRESS	SIZE STREET	SIZE PROP	SHORT & LONG MEASUREMENT	CORP LOCATION	REMARKS
249 UBUIQUE CRES	20	20	3.69 N/SHL	OPP S/C	REV. TAPPED
RESIDENTIAL	COPPER	COPPER	172.99 SSL DONCASTER		
245 UBUIQUE CRES	20	20	0.70 S/SHL	OPP S/C	REV. TAPPED
RESIDENTIAL	COPPER	COPPER	151.83 SSL DONCASTER		
244 UBUIQUE CRES	20	20	4.88 N/SHL	OPP S/C	
RESIDENTIAL	COPPER	COPPER	214.62 SSL DONCASTER		
241 UBUIQUE CRES	20	20	2.55 S/SHL	3.05 S/SC	REV. TAPPED
RESIDENTIAL	COPPER	COPPER	135.66 SSL DONCASTER		
240 UBUIQUE CRES	20	20	3.21 S/SHL	OPP S/C	
RESIDENTIAL	COPPER	COPPER	208.65 SSL DONCASTER		
236 UBUIQUE CRES	20	20	3.05 N/SHL	OPP S/C	
RESIDENTIAL	COPPER	COPPER	194.24 SSL DONCASTER		RENEW TO R W/ 20 COPPER
232 UBUIQUE CRES	20	20	0.98 S/SHL	OPP S/C	
RESIDENTIAL	COPPER	COPPER	185.79 SSL DONCASTER		
228 UBUIQUE CRES	20	20	5.49 N/SHL	0.6 N/SC	
RESIDENTIAL	COPPER	COPPER	171.42 SSL DONCASTER		
224 UBUIQUE CRES	20	20	2.40 S/SHL	0.6 N/SC	
RESIDENTIAL	COPPER	COPPER	163.31 SSL DONCASTER		

WATER SERVICE INFORMATION

ADDRESS	SIZE STREET	SIZE PROP	SHORT & LONG MEASUREMENT	CORP LOCATION	REMARKS
220 UBUIQUE CRES	20	20	5.55 N/SHL	0.6 N/SC	
RESIDENTIAL	COPPER	COPPER	149.81 SSL DONCASTER		
218 UBUIQUE CRES	20	20	3.15 S/SHL	OPP S/C	
RESIDENTIAL	COPPER	COPPER	144.64 SSL DONCASTER		
214 UBUIQUE CRES	20	20	3.31 N/SHL	0.9 N/SC	
RESIDENTIAL	COPPER	COPPER	131.56 SSL DONCASTER		
210 UBUIQUE CRES	20	20	3.81 S/SHL	0.45 N/SC	
RESIDENTIAL	COPPER	COPPER	122.41 SSL DONCASTER		
206 UBUIQUE CRES	20	20	6.91 E/SHL	1.68 S/SC	
RESIDENTIAL	COPPER	COPPER	108.36 SSL DONCASTER		
202 UBUIQUE CRES	20	20	1.05 E/SHL	0.45 W/SC	
RESIDENTIAL	COPPER	COPPER	102.18 SSL DONCASTER		
198 UBUIQUE CRES	20	20	5.20 W/SHL	3.30 E/SC	
RESIDENTIAL	COPPER	COPPER	90.99 EEL DONCASTER		
195 UBUIQUE CRES	20	20	6.30 W/SHL	OPP S/C	SERVICED FROM N LEG
RESIDENTIAL	COPPER	COPPER	77.02 EEL DONCASTER		
194 UBUIQUE CRES	20	20	3.45 E/SHL	OPP S/C	
RESIDENTIAL	COPPER	COPPER	85.99 EEL DONCASTER		

*SERVICES TO BE RENEWED TO R ALL OTHERS TO BE RECONNECTED

200 WM	WATERMAIN	200 WM	SL, HYDRO	150 WM	WATERMAIN	150 WM	LOCATION APPROVED
⊕	HYDRANT	⊕	MTS	⊕	HYDRANT	⊕	UNDERGROUND STRUCTURES
⊙	VALVE	⊙	TRAFFIC SIGNALS	⊙	VALVE	⊙	
525 LDS	LAND DRAINAGE SEWER	525 LDS	GAS	50 GAS	300 LDS	300 LDS	
375 WWS	WASTEWATER SEWER	375 WWS	SURVEY BAR	250 WWS	250 WWS	250 WWS	
○	MANHOLE	○	FENCE	×	○	○	
□	CATCH BASIN	□	POLE - HYDRO, MTS	⊘	□	□	
▽	CURB INLET	▽	CURB STOP	⊙	▽	▽	
∇	REDUCER	∇	GUY ANCHOR	⊙	∇	∇	
X	COUPLER	X	LIGHT STANDARD	⊙	X	X	
⊕	ANODE	⊕	TREE	⊙	⊕	⊕	
EXISTING	LEGEND-PLAN	PROPOSED	EXISTING	LEGEND-PLAN	PROPOSED	EXISTING	LEGEND-PROFILE

NO.	REVISIONS	DATE	BY

CITY OF WINNIPEG
WATER AND WASTE
ENGINEERING DIVISION

DESIGNED BY: NC
 CHECKED BY: TW
 DRAWN BY: CJH
 APPROVED BY: KZ

HOR. SCALE: 1:250
 VERTICAL: 1:50

RELEASED FOR CONSTRUCTION

DATE: 2007 06 15

ENGINEER'S SEAL

ORIGINAL SIGNED
BY K.R.
ZUREK
07/06/15

BID OPPORTUNITY: 426-2007
 FILENAME: D-9203.dwg
 PLOT DATE: 2007 06 14

THE CITY OF WINNIPEG
WATER AND WASTE DEPARTMENT

2007 WATERMAIN RENEWALS

UBUIQUE CRESCENT (E LEG)
150.0 N OF PUBLIC LANE TO
UBUIQUE CRESCENT (N LEG)

SHEET **10** OF **10**
 CITY DRAWING NUMBER
D-9203

METRIC
 WHOLE NUMBERS INDICATE MILLIMETRES
 DECIMALIZED NUMBERS INDICATE METRES

NOTE: ALL VALUES TO BE INSTALLED COUNTERCLOCKWISE TO CLOSE

WARNING

IF POWER EQUIPMENT OR EXPLOSIVES ARE TO BE USED FOR EXCAVATION ON THIS PROJECT THE CONTRACTOR MUST:

- 1) NOTIFY THE GAS COMPANY OF THE PROPOSED LOCATION OF EXCAVATION.
- 2) TAKE PRECAUTION TO AVOID DAMAGE TO GAS COMPANY INSTALLATIONS.

SEE PROVINCIAL REGULATION 210/72 FOR DETAILS