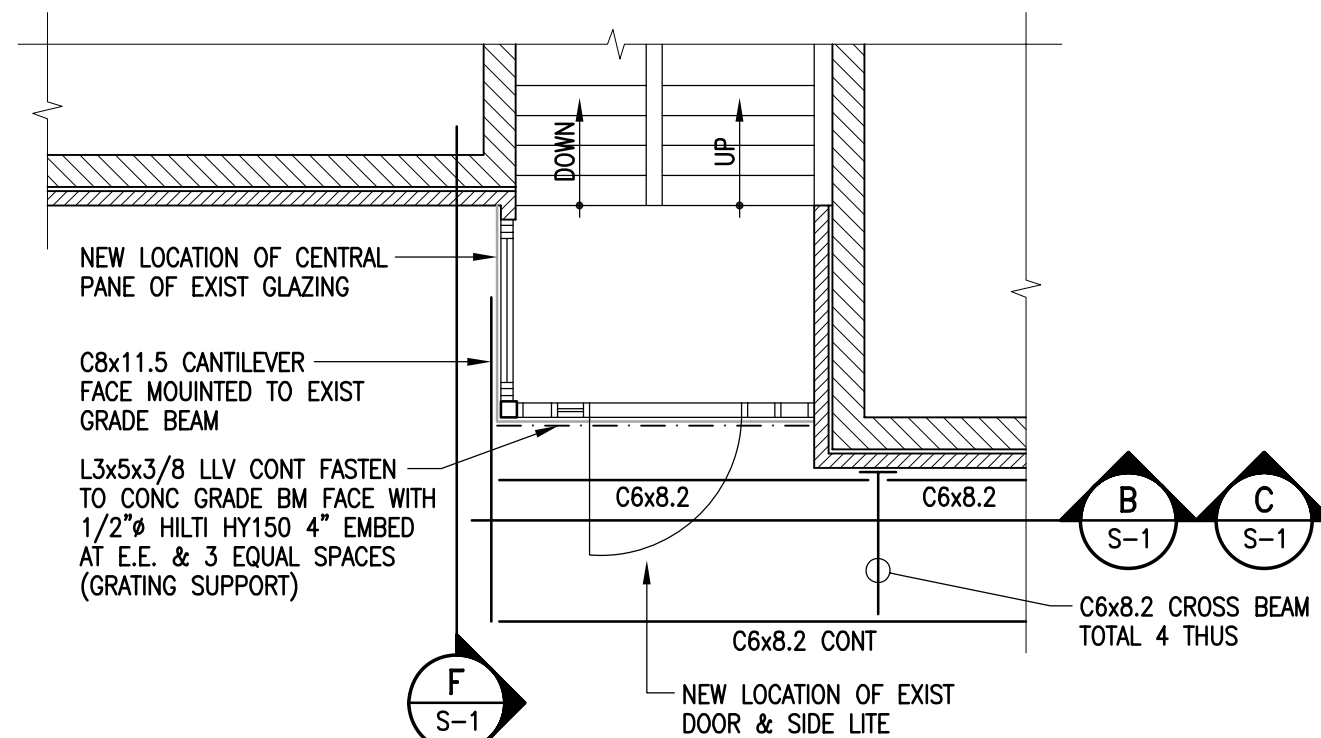
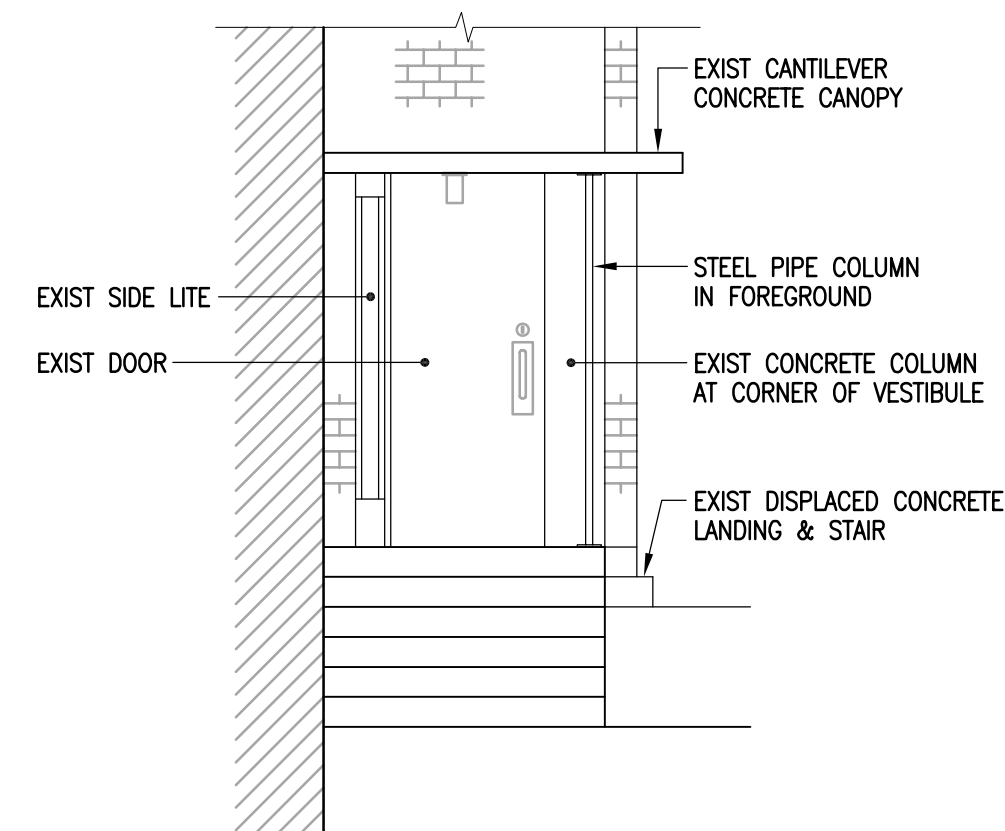


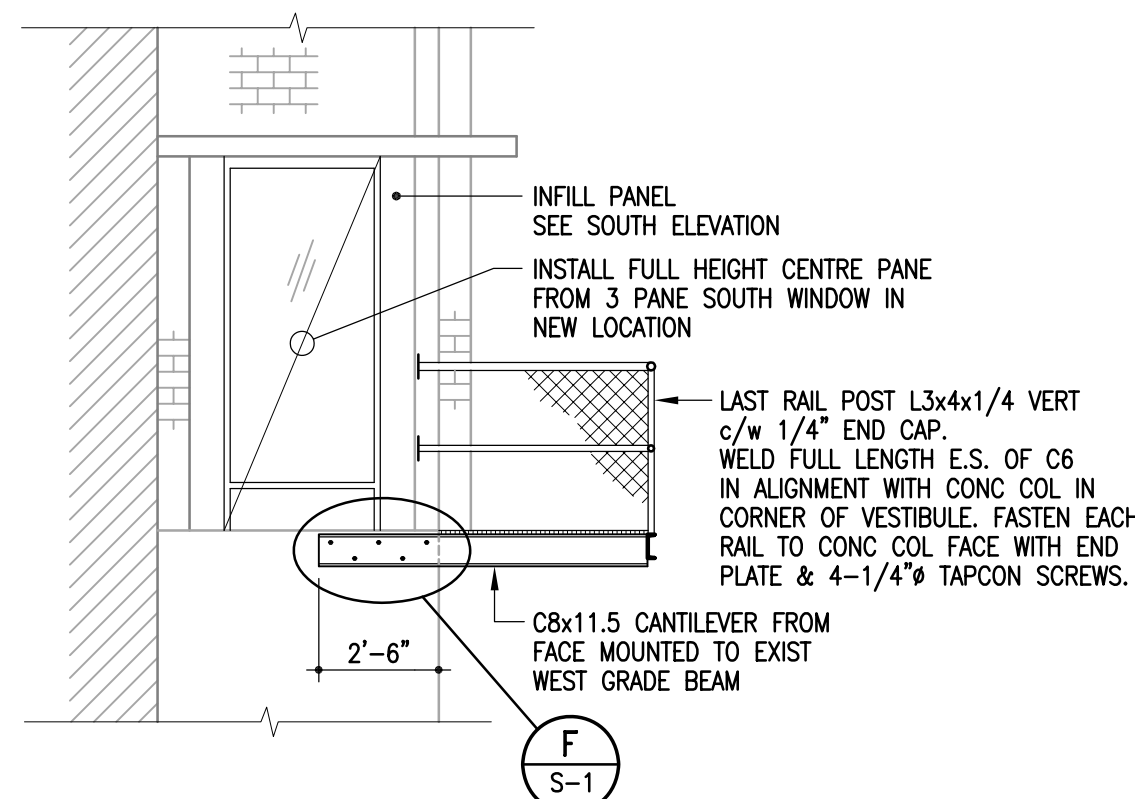
PARTIAL EXISTING FLOOR PLAN
1/4" = 1'-0"



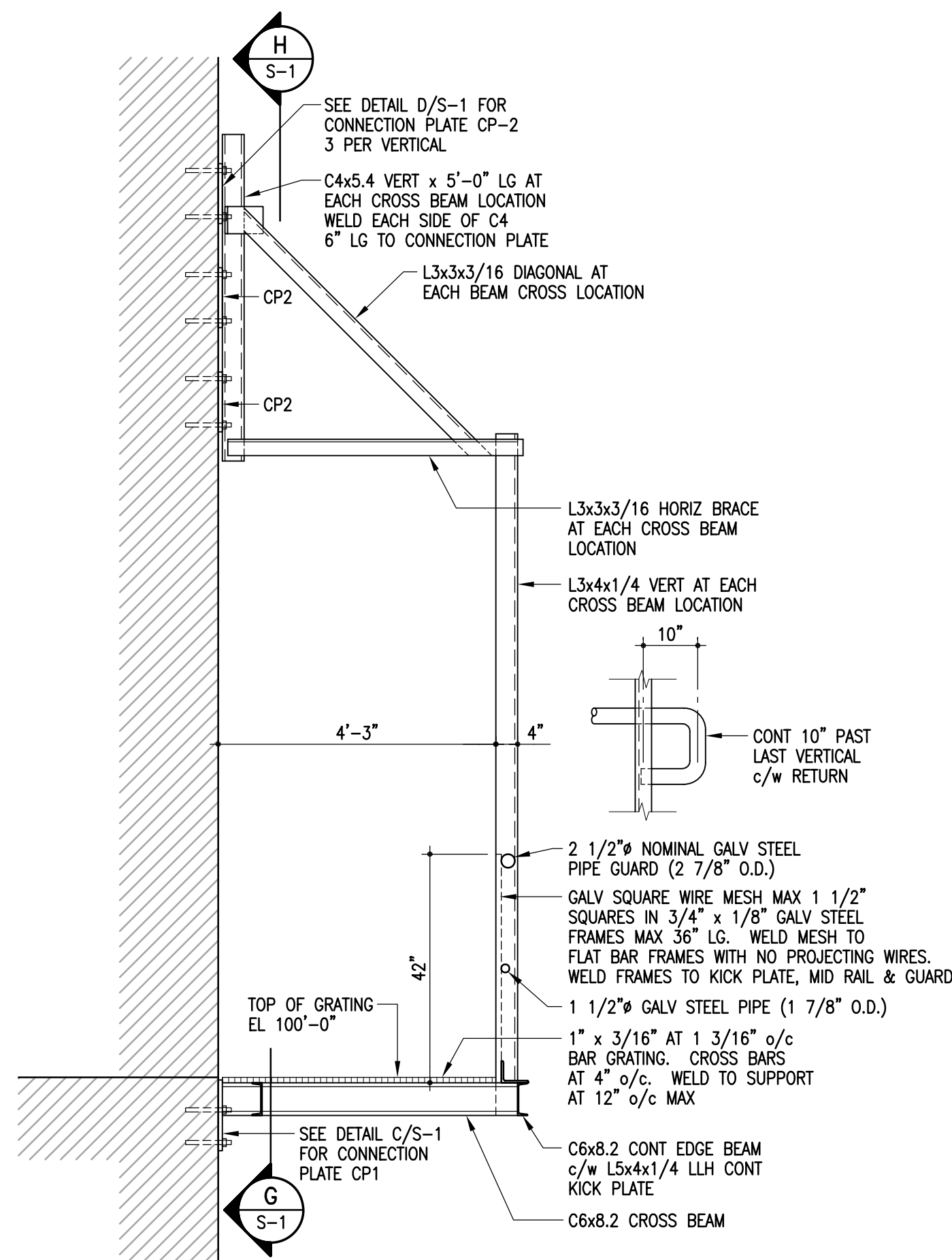
PARTIAL MODIFIED FLOOR PLAN
1/4" = 1'-0"



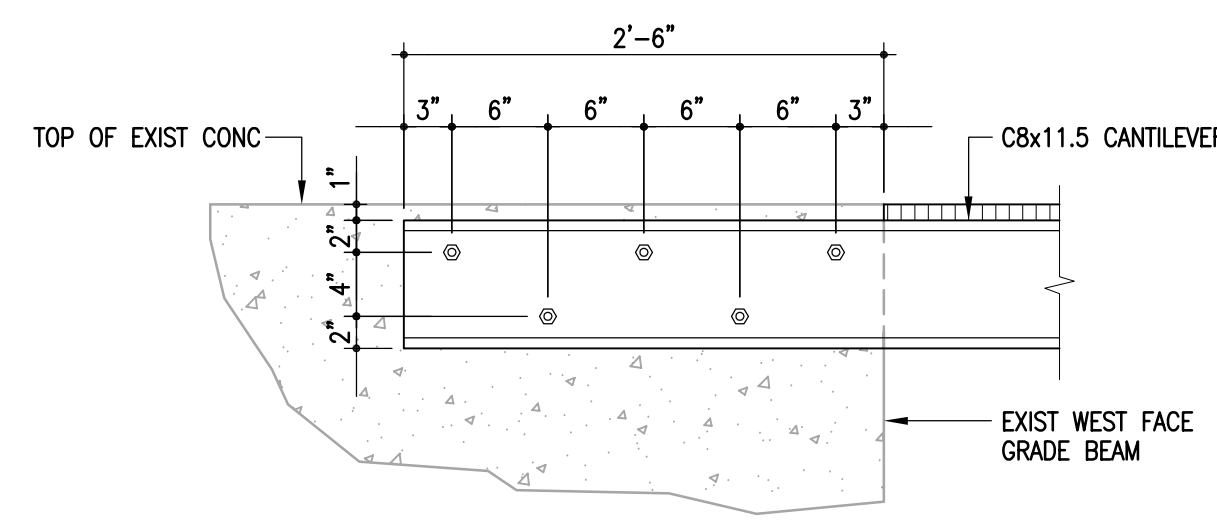
D PARTIAL WEST ELEVATION—EXISTING CONDITION
S-1 1/4" = 1'-0"



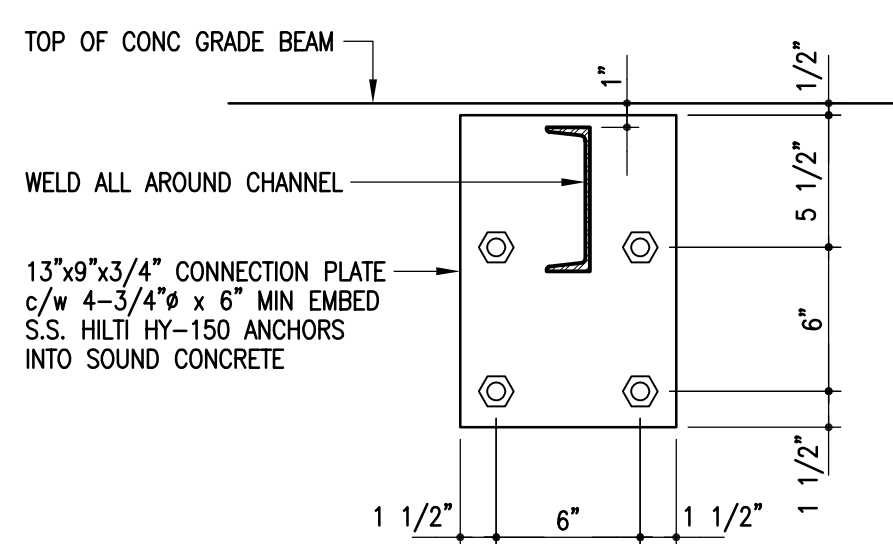
E PARTIAL WEST ELEVATION—MODIFIED CONDITION
S-1 1/4" = 1'-0"



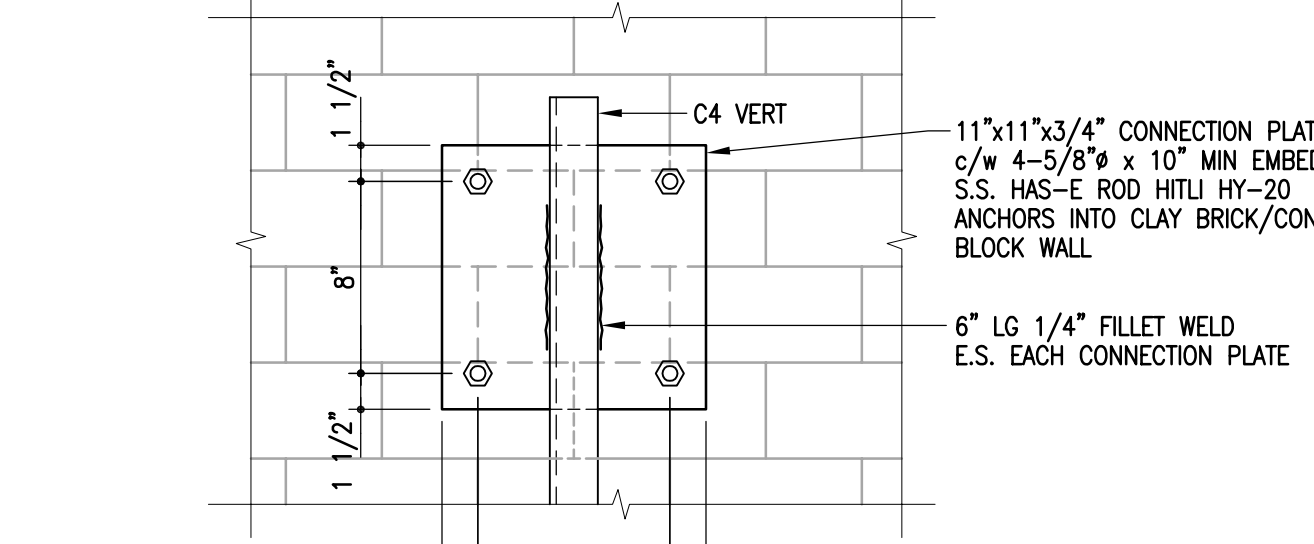
1 SECTION
S-1 1/2" = 1'-0"



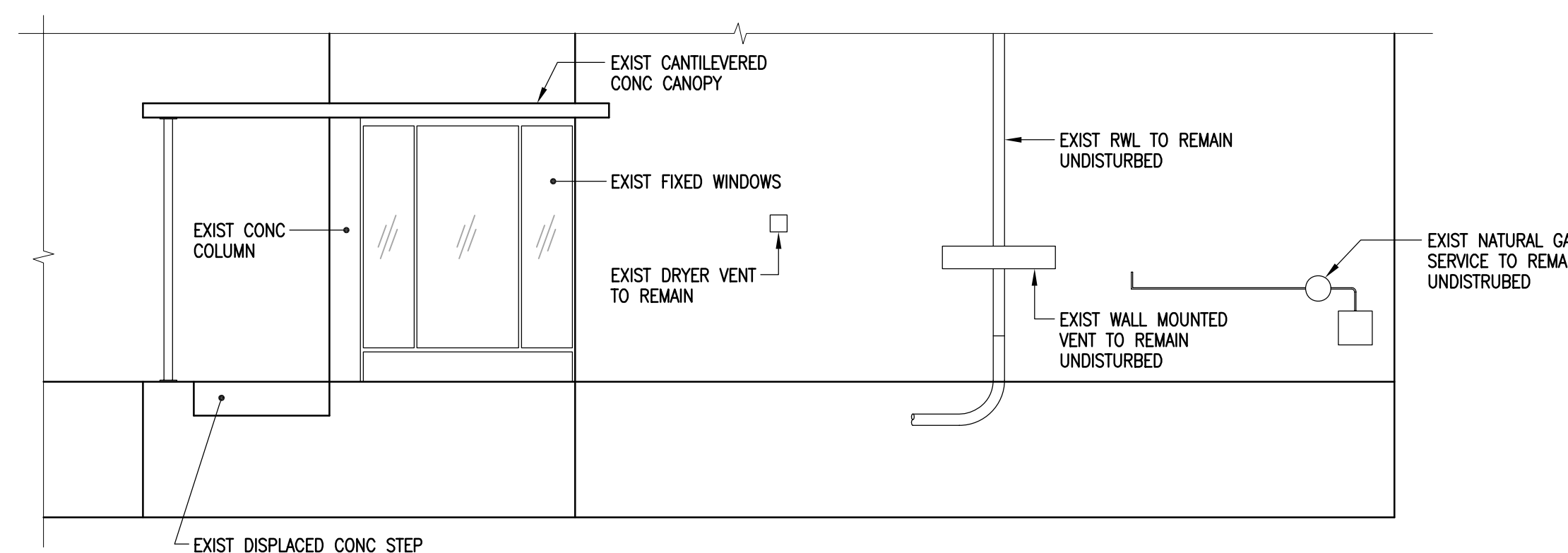
F DETAIL
S-1 1" = 1'-0"



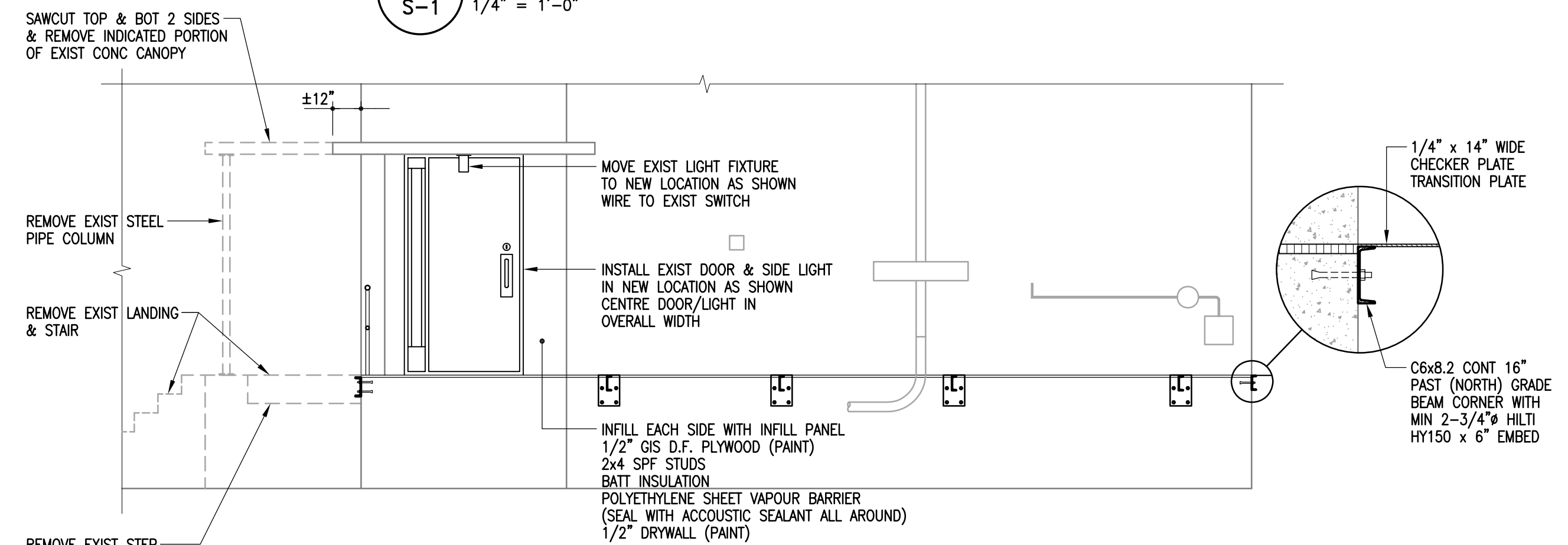
G CONNECTION PLATE DETAIL CP1
S-1 1 1/2" = 1'-0"



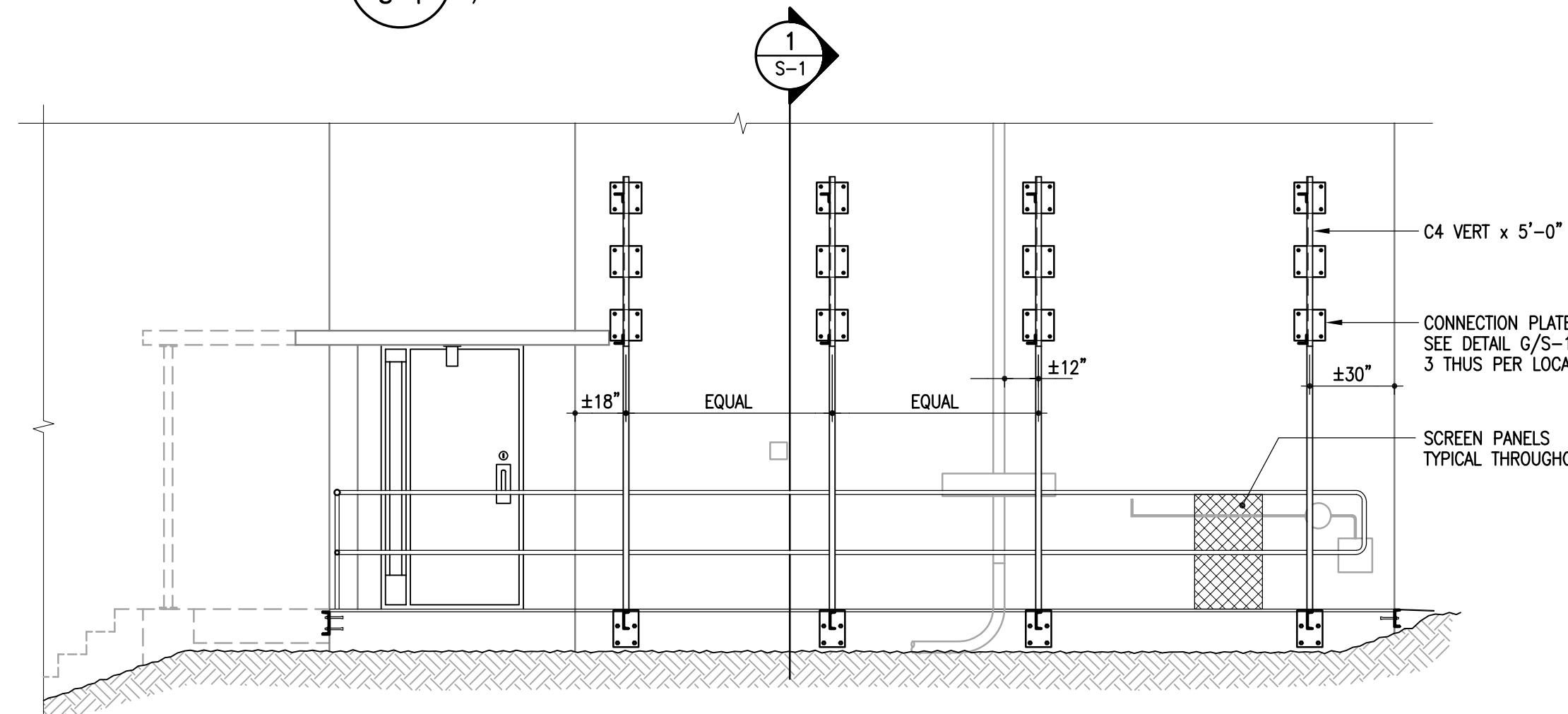
H CONNECTION PLATE DETAIL CP2
S-1 1 1/2" = 1'-0"



A PARTIAL EXISTING SOUTH ELEVATION
S-1 1/4" = 1'-0"



B PARTIAL MODIFIED SOUTH ELEVATION
S-1 1/4" = 1'-0"



C PARTIAL MODIFIED SOUTH ELEVATION (WALKWAY STRUCTURE)
S-1 1/4" = 1'-0"
DESIGN LIVE LOAD = 100 psf

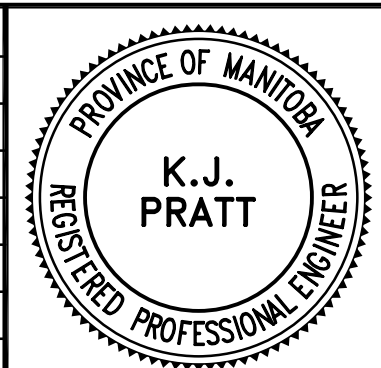
SCOPE OF WORK

- THE WORK SHALL INCLUDE ALL COMPONENTS AS INDICATED ON THE DRAWINGS, INCLUDING BUT NOT LIMITED TO:
1. PROVIDE CONTINUOUS EMERGENCY EXIT THROUGH THIS LOCATION. PROVIDE TEMPORARY RAMP AND HAND RAIL SUITABLE FOR PUBLIC USE.
 2. SITE MEASURE ALL RELEVANT DIMENSIONS PRIOR TO INITIATING DEMOLITION AND CONSTRUCTION. ADVISE CONTRACT ADMINISTRATOR OF ANY DISCREPANCIES.
 3. DEMOLISH AND REMOVE FROM SITE EXISTING CONCRETE LANDING, STAIRS AND STEP.
 4. REMOVE INDICATED PORTION OF CANTILEVERED CONCRETE CANOPY. SAWCUT TOP AND BOTTOM TO DELINEATE EDGES. DO NOT DAMAGE CONSTRUCTION THAT IS TO REMAIN. MOVE AND REWIRE CANOPY LIGHT FIXTURE AS INDICATED.
 5. REMOVE EXISTING DOOR AND SIDE LITE INCLUDING PERIMETER FRAME WITHOUT DAMAGE. INSTALL IN NEW LOCATION. FASTEN AND SEAL ALL AROUND.
 6. REMOVE EXISTING THREE PANE FIXED GLAZING INCLUDING PERIMETER FRAME WITHOUT DAMAGE. MODIFY FRAME TO HAVE ONLY LARGE CENTRE PANE. INSTALL IN NEW LOCATION AS SHOWN.
 7. PROVIDE INFILL WALL PANELS AS INDICATED. PRIME AND PAINT (2 COATS) EACH FACE.
 8. INSTALL NEW STEEL GRATING WALKWAY INCLUDING ALL STRUCTURAL STEEL SUPPORTS AND RAIL.

GENERAL NOTES

1. DO NOT SCALE DRAWINGS. SITE MEASURE ALL RELEVANT COMPONENTS PRIOR TO PROCEEDING WITH THE WORK. NO EXTRAS WILL BE GRANTED FOR INCORRECTLY MEASURED WORK. REPORT ANY DISCREPANCIES TO CONTRACT ADMINISTRATOR PRIOR TO PROCEEDING.
2. DO NOT UTILIZE ANY HEAVY EQUIPMENT NOR STORE MATERIALS ON THE GROUND WEST (RIVER SIDE) OF THE VESTIBULE.
3. STRUCTURAL STEEL TO CONFORM TO CSA CAN-40.21, "STRUCTURAL QUALITY STEELS" AND CSA 40.20 "GENERAL REQUIREMENTS FOR ROLLED OR WELDED STRUCTURAL QUALITY STEEL".
4. ALL ROLLED OR STEEL STRUCTURAL SECTIONS SHALL BE G40.21-50W. ALL HOLLOW STRUCTURAL SECTIONS TO BE G40.21-50W CLASS C. ALL ANGLES, CHANNELS AND PLATES SHALL BE G40.21-44W.
5. FABRICATION AND ERECTION OF STRUCTURAL STEEL SHALL BE PERFORMED IN ACCORDANCE WITH CAN3-S16.1-M84, "STEEL STRUCTURES FOR BUILDINGS".
6. ALL WELDING SHALL CONFORM TO THE LATEST EDITION OF CSA W59, "WELDED STEEL CONSTRUCTION". FABRICATORS SHALL BE PROPERLY CERTIFIED IN ACCORDANCE WITH CSA W47.1, "CERTIFICATION OF COMPANIES FOR FUSION WELDING OF STEEL STRUCTURES".
7. ALL BOLTED CONNECTIONS TO USE A325 HIGH STRENGTH BOLTS. MINIMUM CONNECTION SHALL CONSIST OF 2 BOLTS.
8. ALL STRUCTURAL STEEL IS TO BE HOT-DIP GALVANIZED. ALL FASTENERS OF NEW STRUCTURE (HILTS) TO EXISTING CONCRETE/MASONRY TO BE STAINLESS STEEL OR GALVANIZED.
9. STRUCTURAL STEEL SUPPLIER IS TO SUBMIT ENGINEERING DRAWINGS BEARING THE SEAL OF A REGISTERED ENGINEER COVERING THE DESIGN OF CONNECTIONS, TO THE CONTRACT ADMINISTRATOR FOR REVIEW PRIOR TO FABRICATION. DESIGN LOADS AS PER MBC.

The General Contractor shall check & verify all dimensions and shall report any errors or omissions to the contract administrator.



Project		2 CARRIÈRE AVENUE WINNIPEG, MANITOBA BID OPPORTUNITY 427-2007		Sheet No. S-1
Drawing Title		REAR EXIT MODIFICATIONS		
Design	Drawn	Checked	Scale	Date
KJP	TW	KJP	AS NOTED	MAR 26/07
File		2006-988		