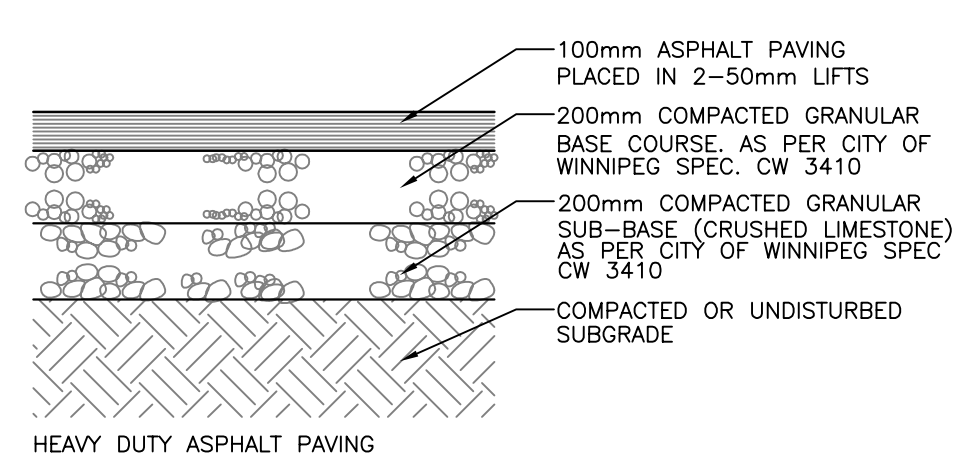
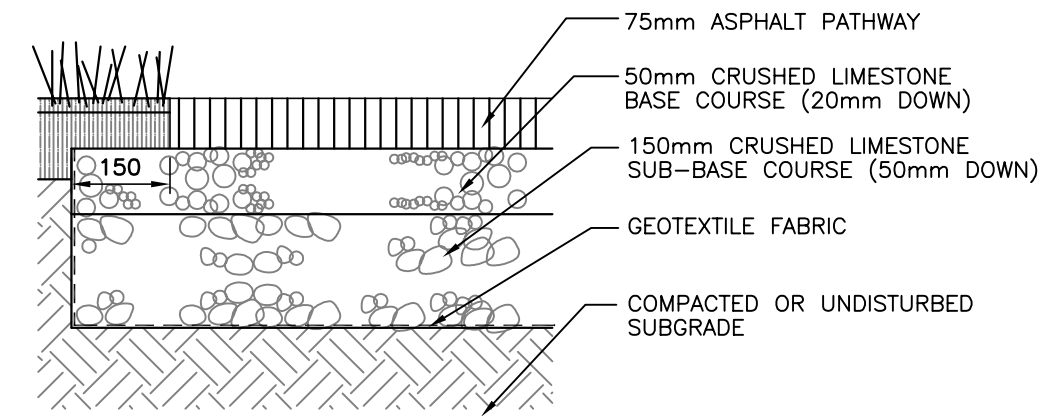


NOTE:  
JOINTS AS PER CITY OF WINNIPEG SPECIFICATIONS.

**1 CONCRETE SIDEWALK**  
L1 N.T.S.

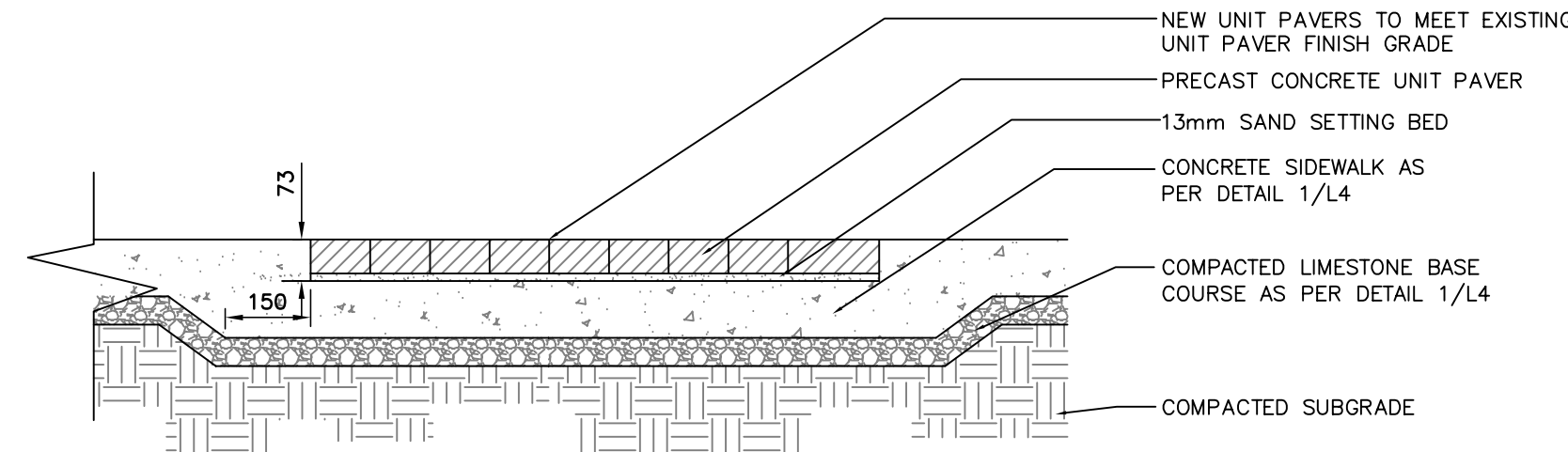


**2 ASPHALT PAVING**  
L1 N.T.S.

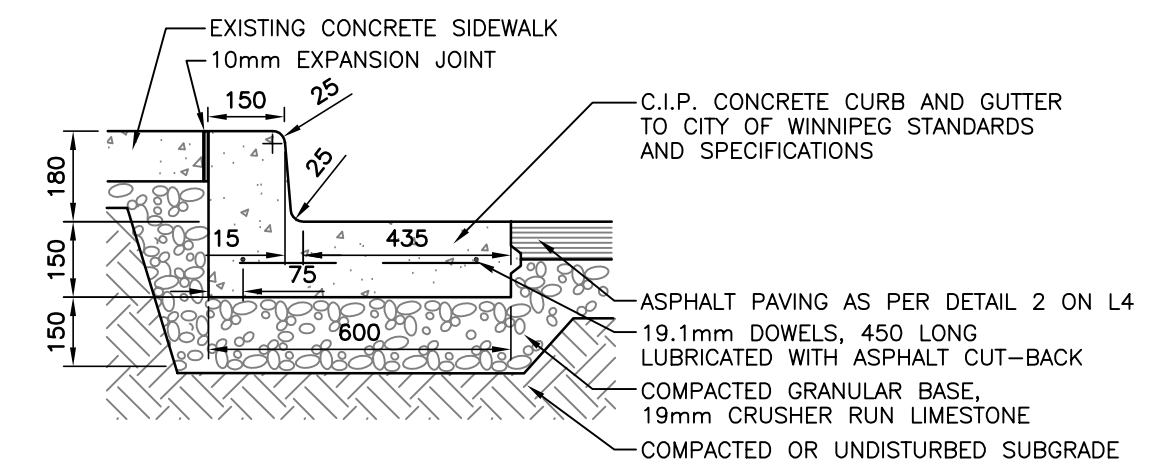


NOTE:  
CONTRACTOR TO PERFORM TEST ROLL ON EXISTING SUBGRADE TO DETERMINE SOIL LOAD BEARING CAPABILITIES. WHERE SUBGRADE IS UNSUITABLE REMOVE AND REPLACE WITH ACCEPTABLE MATERIAL TO CITY OF WINNIPEG STANDARDS.

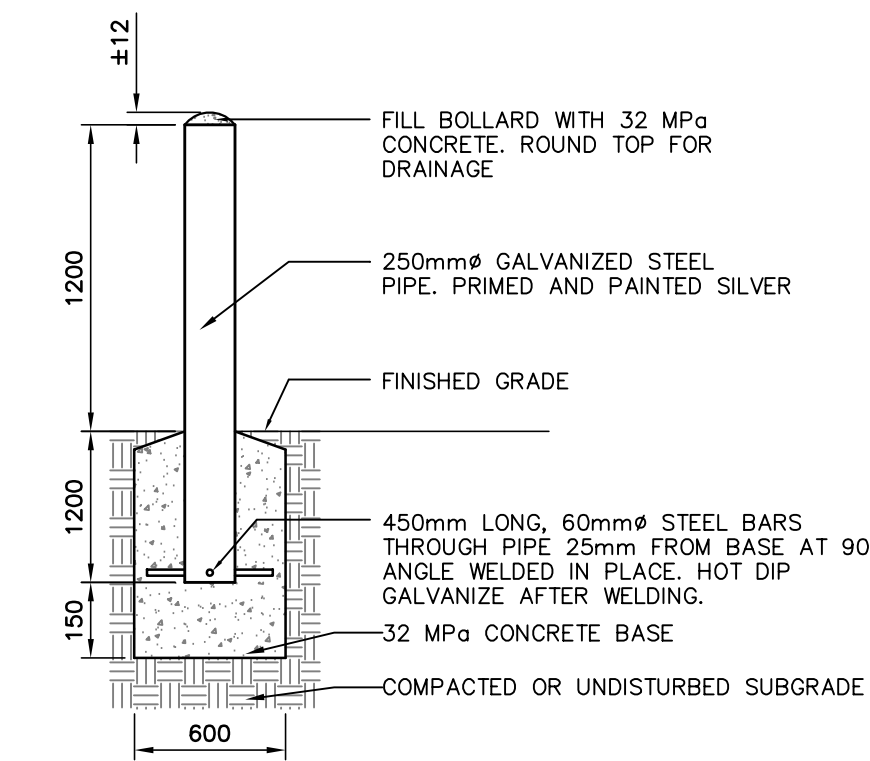
**3 ASPHALT PATHWAY**  
L1 N.T.S.



**4 CONCRETE SIDEWALK WITH UNIT PAVER INSERT**  
L1 N.T.S.

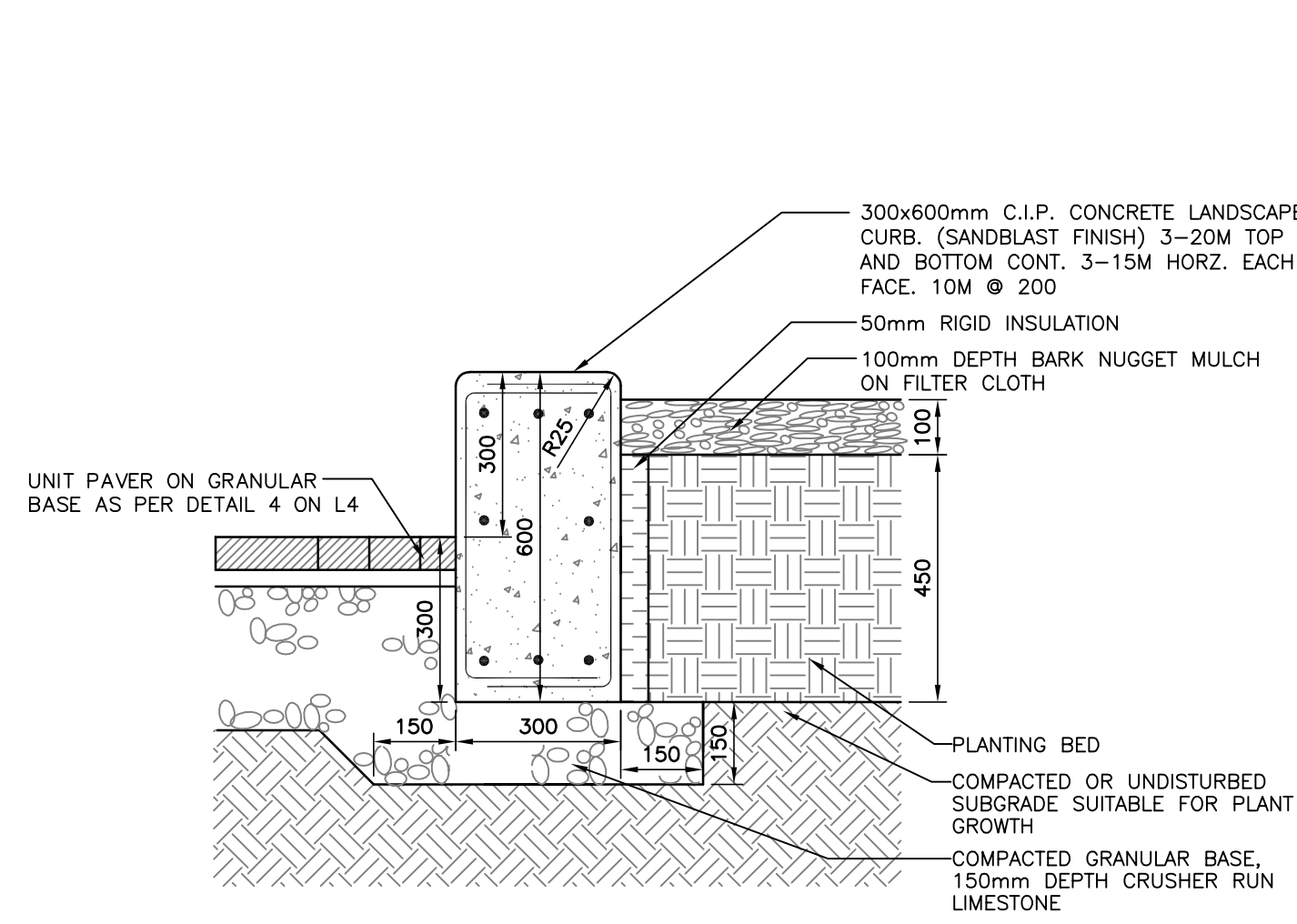


**5 CURB AND GUTTER**  
L1 N.T.S.

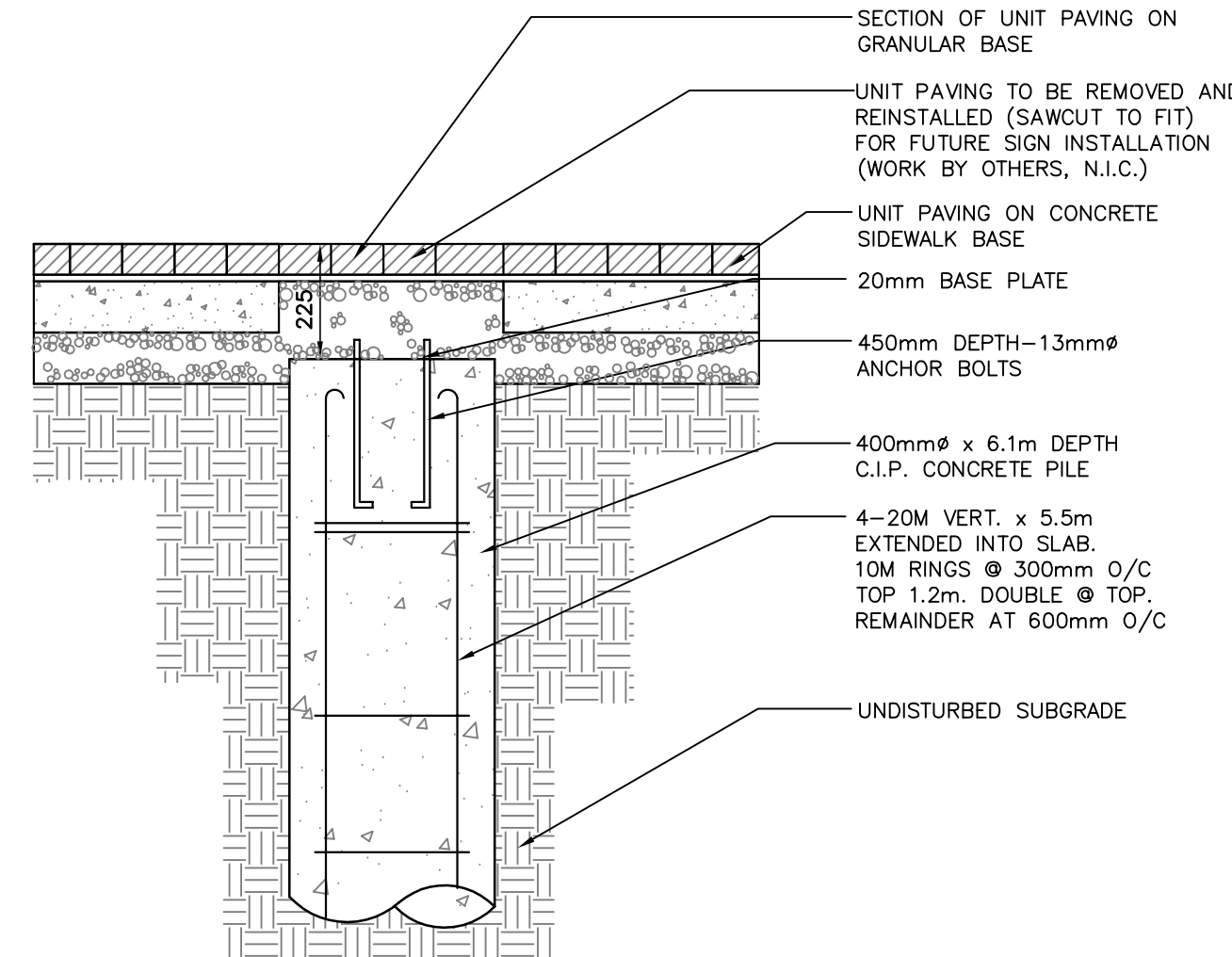


NOTE:  
LOCATIONS OF BOLLARDS WITH SIGNAGE NOTED ON PLANS CO-ORDINATE WITH TRAFFIC SERVICES AS REQUIRED. POST TO BE SUPPLIED BY TRAFFIC SERVICES, INSTALLED BY CONTRACTOR (PRICE INCIDENTAL). SIGN SUPPLIED AND INSTALLED BY TRAFFIC SERVICES.

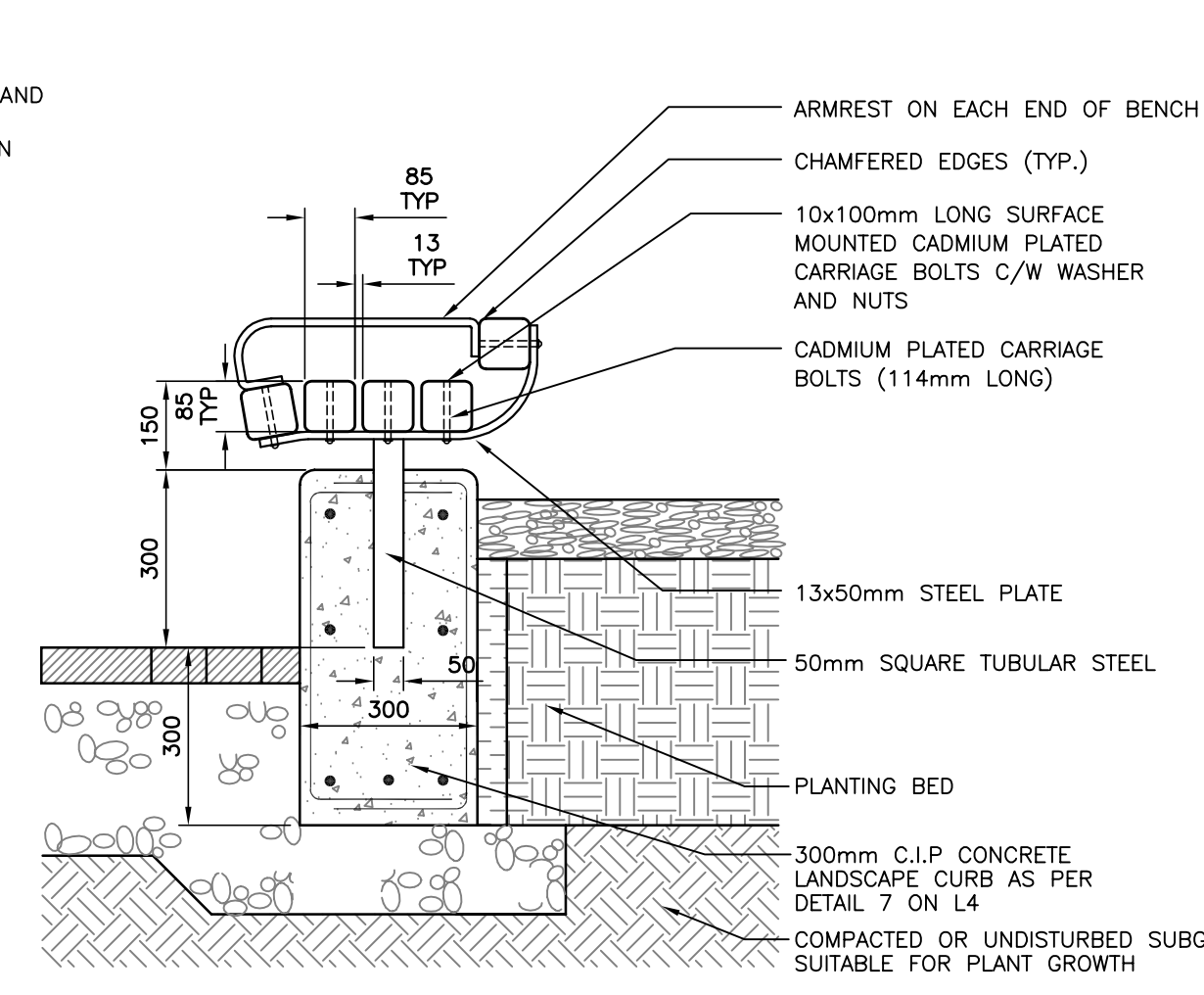
**6 CONCRETE FILLED STEEL BOLLARD**  
L1 N.T.S.



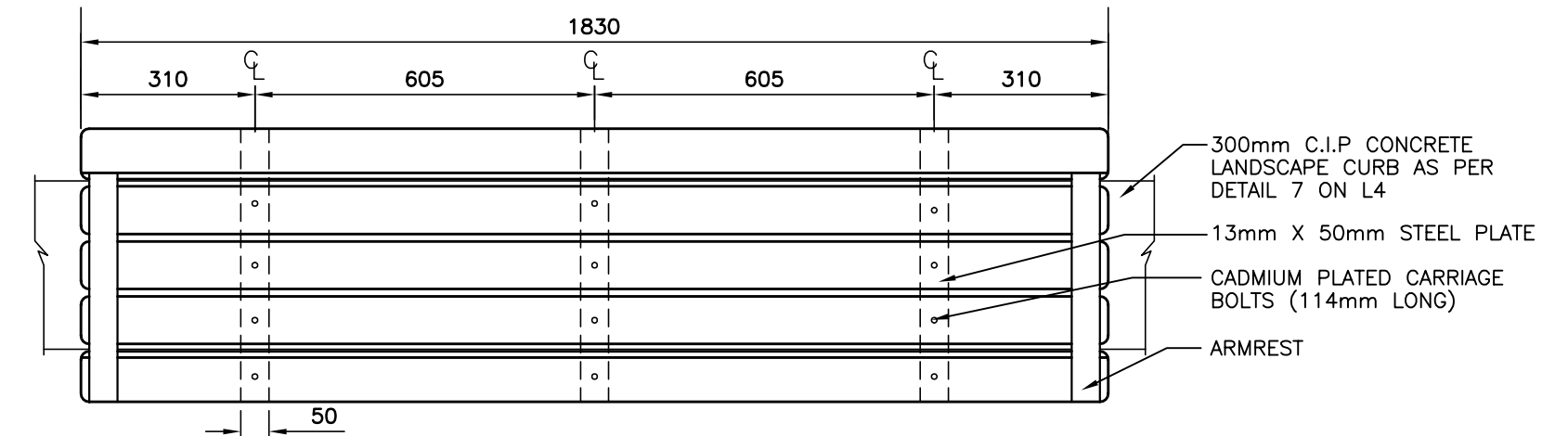
**7 CIP CONCRETE LANDSCAPE CURB**  
L1 N.T.S.



**8 CIP CONCRETE PILE**  
L1 N.T.S.

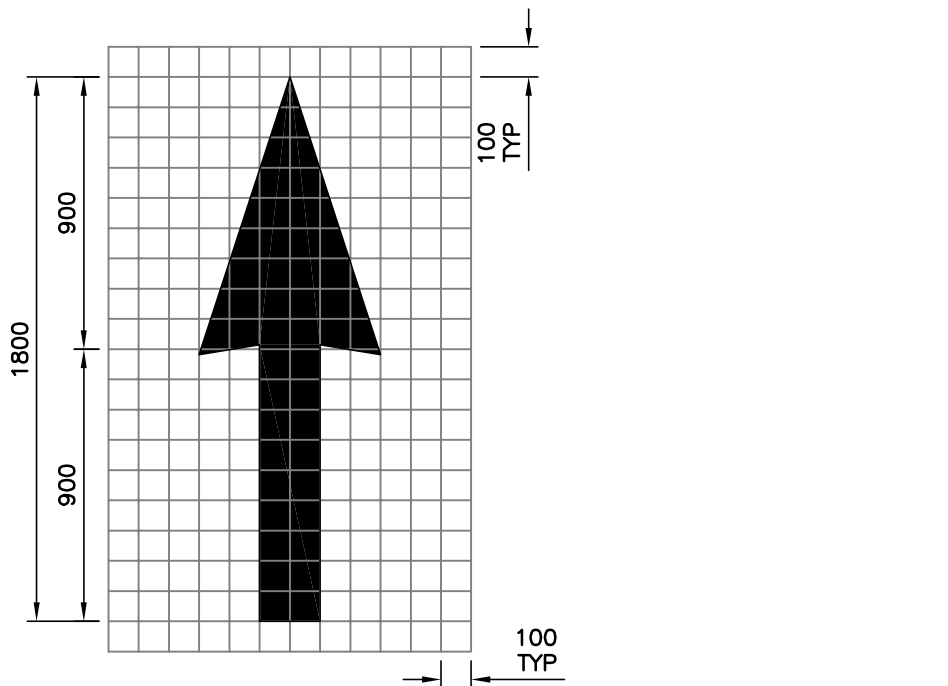


**9 TACHE STYLE RECYCLED PLASTIC TIMBER BENCH WITH MODIFIED BACK AND ARMREST**  
L1 N.T.S.

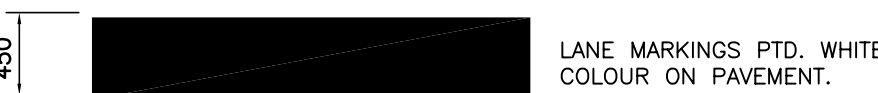


PLAN VIEW

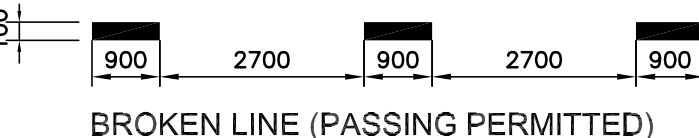
NOTES:  
RECYCLED PLASTIC TIMBER  
ALL METAL COMPONENTS SHALL BE GALVANIZED STEEL, ACID WASHED, PRIMED AND PAINTED SILVER.  
REFER ALSO TO SPECIFICATIONS



TRAFFIC ARROWS PAINTED WHITE COLOUR ON PAVEMENT.  
TYPICAL TRAFFIC ARROWS

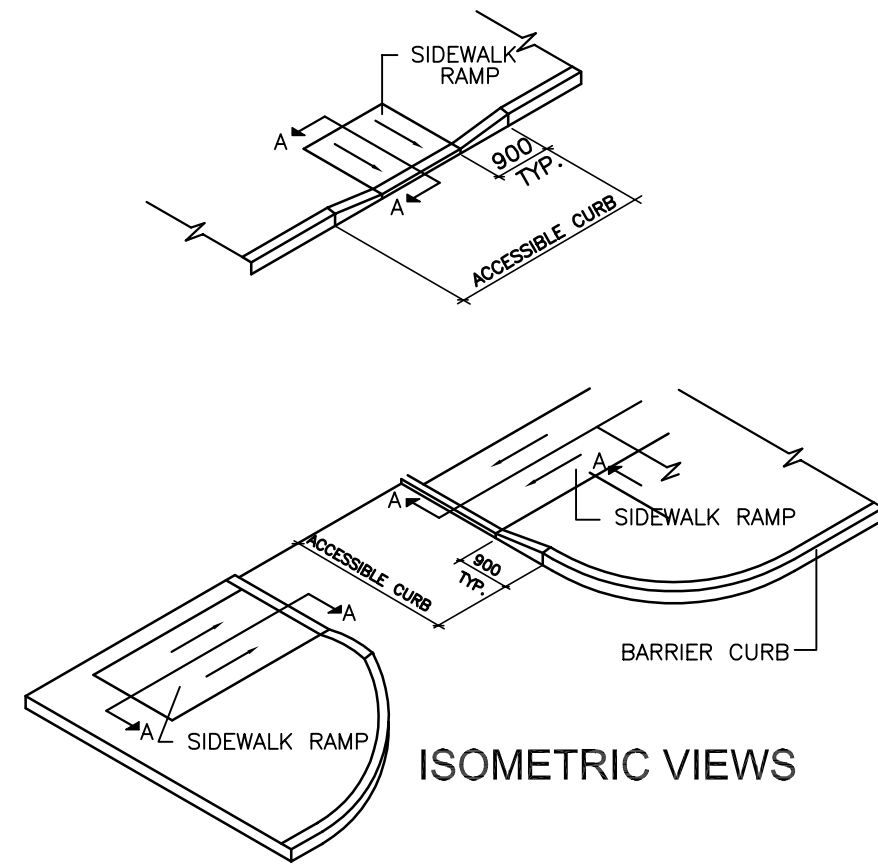


STOP LINE  
SOLID BARRIER LINE (PASSING NOT PERMITTED)

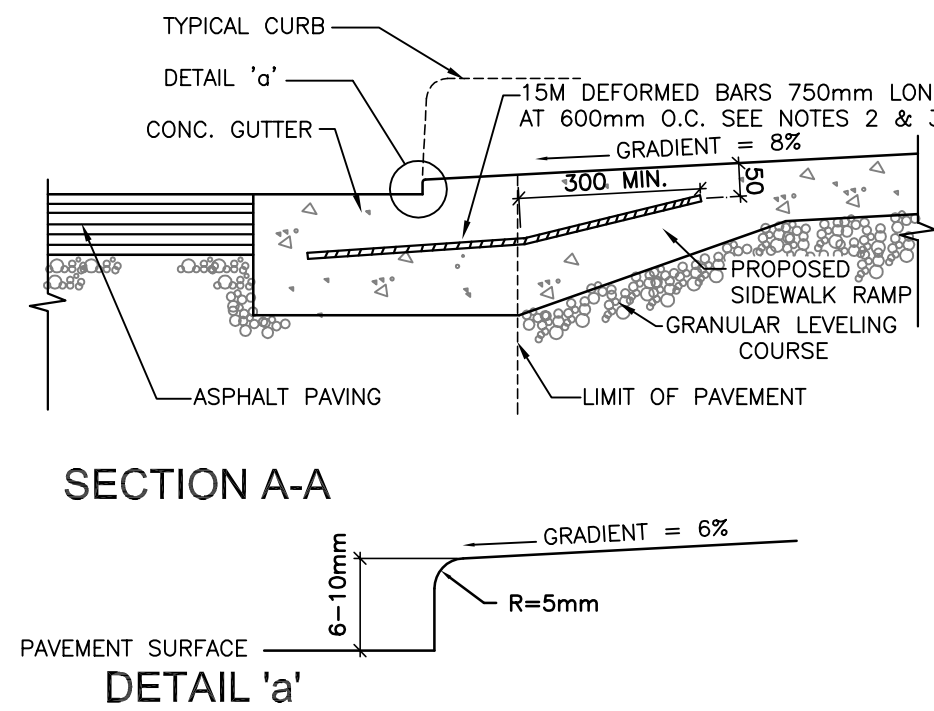


BROKEN LINE (PASSING PERMITTED)

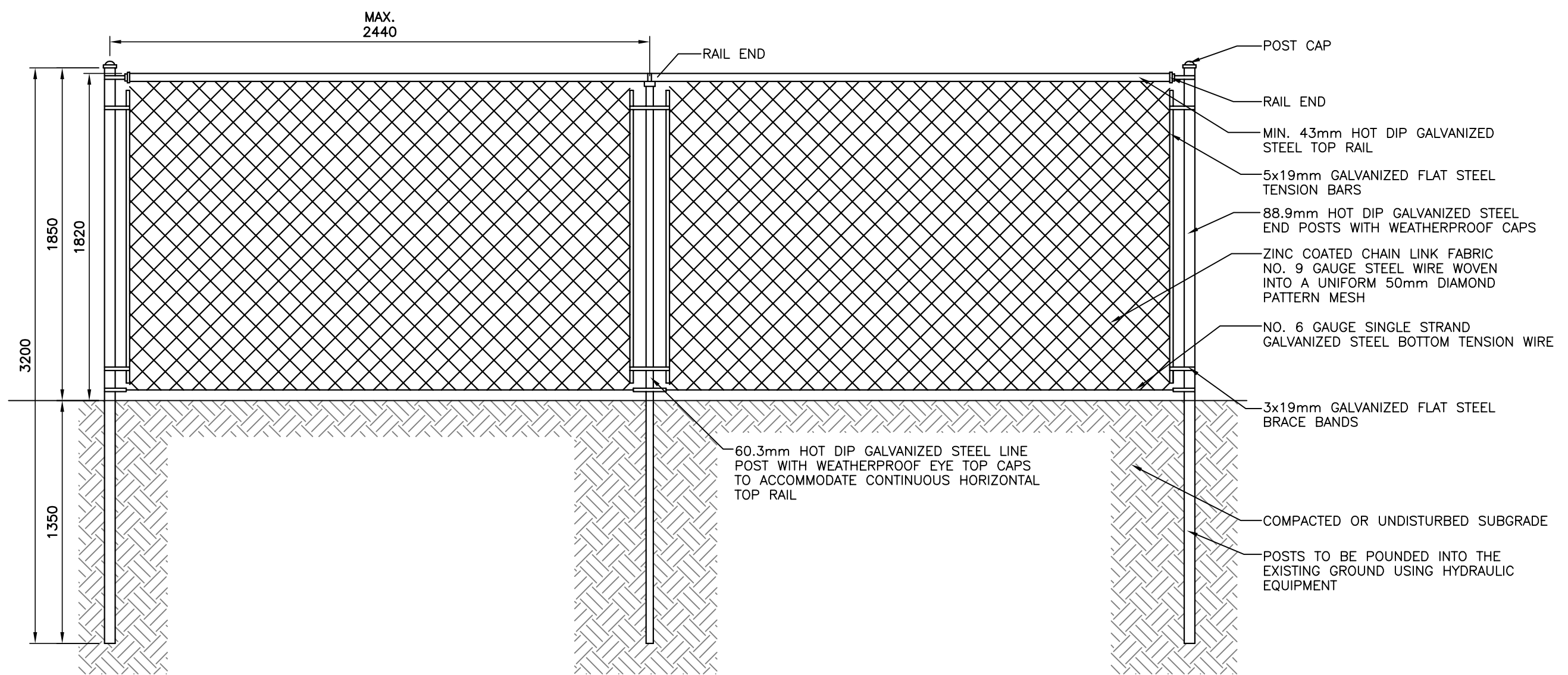
**10 TYPICAL LANE MARKINGS**  
L1 N.T.S.



**11 SIDEWALK RAMPS**  
L1 N.T.S.



NOTES  
1) SIDEWALK RAMP SURFACE SHALL BE AS INDICATED ON PLAN DRAWINGS  
2) 15M TIE BARS SHALL BE PLACED PRIOR TO THE PLACING OF ANY CONCRETE. TIE BARS SHALL BE BENT AS REQUIRED AND PLACED SO AS TO ENSURE A MINIMUM CONCRETE COVER OF 40mm  
3) 15M TIE BARS SHALL BE DEFORMED AND CONFORM TO CSA STANDARD G30.12 GRADE 300, UNLESS THE BARS ARE TO BE BENT AND LATER STRAIGHTENED IN THE FIELD. IN WHICH CASE THEY SHALL CONFORM TO ASTM A307 GRADE A BOLT STEEL (227.53 MPa YIELD STRESS)  
4) MAXIMUM SLOPE OF FLARED SIDES SHALL BE 1:10 REFER TO CSA B651, ARTICLE 4.4.4.2  
5) SIDEWALK RAMPS SHALL CONFORM TO CITY OF WINNIPEG ACCESSIBILITY STANDARDS

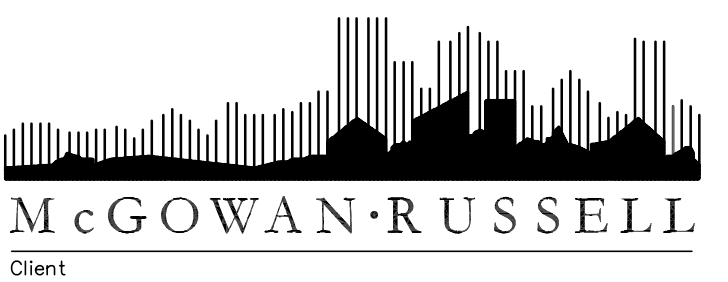


1.82m HT. CHAIN LINK FENCING AND FOUNDATIONS TO CITY OF WINNIPEG STANDARDS AND SPECIFICATIONS. CONTRACTOR TO CONFIRM WIDTH ON SITE PRIOR TO MANUFACTURE.  
FENCE FABRIC TO BE LEVEL. ADJUST GAP BETWEEN FENCE AND GRADE TO ACHIEVE LEVEL FABRIC. MINIMUM GAP IS 75mm, MAX GAP IS 150mm. IF CHANGE IN GRADE IS MORE THAN 150mm, CONTRACTOR TO STEP FABRIC.

**12 1.82m HT. CHAIN LINK FENCE**  
L1 N.T.S.

ISSUED FOR TENDER	26/06/07	AH
ISSUED FOR CITY REVIEW	07/06/07	AH
No.	Revisions	Date
Date	Scale	By
01-06-07	N.T.S.	
Designed By	Drawn By	Checked By
AH	PR	AH

D:\HIROTASTAMP.bmp



CITY OF WINNIPEG  
Project Title  
**WINSMART ACTIVE TRANSPORTATION PATHWAY**

Sheet Title  
**DETAILS**

Project No. 07-018  
Drawing No. L4