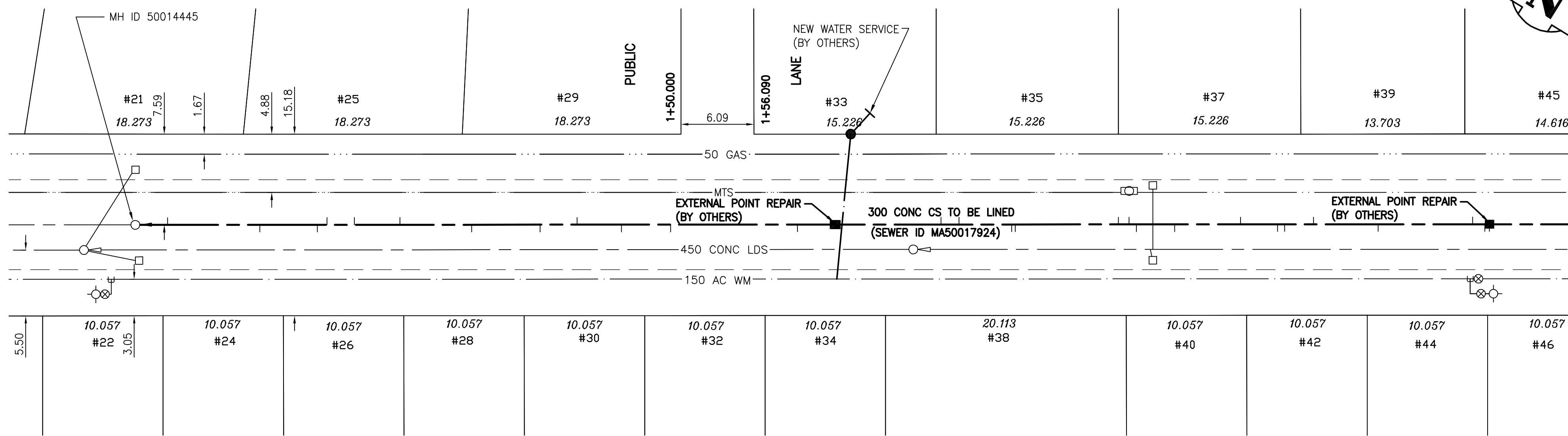


Sewer Junction Information (MA50017924)				
3RD MH WEST OF FITZPATRICK (MHID 50014446) to 4TH MH WEST OF FITZPATRICK (MHID 50014445)				
Distance from 3RD MH WEST OF FITZPATRICK (MH 50014446) *	Station	Direction	Size	Material
1.6	WEST 150 MM DIA.	SOUTH	CNI	LIVE
11.2	WEST 150 MM DIA.	SOUTH	JN	CAPPED
11.6	WEST 150 MM DIA.	SOUTH	CX	LIVE - HOLE
12.6	WEST 150 MM DIA.	NORTH	JN	LIVE
20.5	WEST 150 MM DIA.	SOUTH	JN	LIVE
25.9	WEST 150 MM DIA.	NORTH	JN	LIVE
28.3	WEST 150 MM DIA.	SOUTH	CN	LIVE
28.9	WEST 150 MM DIA.	SOUTH	JN	CAPPED
32.0	WEST 150 MM DIA.	NORTH	JN	LIVE
33.7	WEST 150 MM DIA.	SOUTH	CXI	HOLE IN SERV.
37.5	WEST 150 MM DIA.	SOUTH	CNI	LIVE
40.7	WEST 150 MM DIA.	SOUTH	JN	CAPPED
41.3	WEST 150 MM DIA.	NORTH	CXI	LIVE
42.2	WEST 150 MM DIA.	NORTH	JN	CAPPED
50.8	WEST 150 MM DIA.	SOUTH	JN	CAPPED
51.1	WEST 150 MM DIA.	SOUTH	CN	LIVE
55.5	WEST 150 MM DIA.	NORTH	JN	CAPPED
57.0	WEST 150 MM DIA.	NORTH	CXI	LIVE
69.0	WEST 150 MM DIA.	SOUTH	CXI	LIVE
79.6	WEST 150 MM DIA.	SOUTH	JN	LIVE
83.7	WEST 150 MM DIA.	SOUTH	CX	LIVE
87.4	WEST 150 MM DIA.	NORTH	CXI	LIVE
90.5	WEST 150 MM DIA.	SOUTH	JN	CAPPED
96.2	WEST 150 MM DIA.	SOUTH	CN	LIVE
102.2	WEST 150 MM DIA.	NORTH	CXI	LIVE
106.0	WEST 150 MM DIA.	NORTH	CN	CAPPED
108.3	WEST 150 MM DIA.	NORTH	CXI	LIVE
109.1	WEST 150 MM DIA.	SOUTH	JN	CAPPED
113.9	WEST 150 MM DIA.	SOUTH	CN	LIVE
121.6	WEST 150 MM DIA.	NORTH	CXI	LIVE

* Information from Sewer Video Inspection



SEWER SERVICE INFORMATION

ADDRESS	SIZE	PROPERTY LINE LOCATION
21 HINDLEY AVE RESIDENTIAL	150 mm	NO INFO AVAILABLE
22 HINDLEY AVE RESIDENTIAL	150 mm	NO INFO AVAILABLE
24 HINDLEY AVE RESIDENTIAL	150 mm	NO INFO AVAILABLE
25 HINDLEY AVE RESIDENTIAL	150 mm	NO INFO AVAILABLE
26 HINDLEY AVE RESIDENTIAL	150 mm	NO INFO AVAILABLE
28 HINDLEY AVE RESIDENTIAL	150 mm	NO INFO AVAILABLE
29 HINDLEY AVE RESIDENTIAL	150 mm	NO INFO AVAILABLE
30 HINDLEY AVE RESIDENTIAL	150 mm	NO INFO AVAILABLE
32 HINDLEY AVE RESIDENTIAL	150 mm	NO INFO AVAILABLE
33 HINDLEY AVE RESIDENTIAL	150 mm	NO INFO AVAILABLE
34 HINDLEY AVE RESIDENTIAL	150 mm	NO INFO AVAILABLE
35 HINDLEY AVE RESIDENTIAL	150 mm	NO INFO AVAILABLE
37 HINDLEY AVE RESIDENTIAL	150 mm	NO INFO AVAILABLE
38 HINDLEY AVE RESIDENTIAL	150 mm	NO INFO AVAILABLE
39 HINDLEY AVE RESIDENTIAL	150 mm	NO INFO AVAILABLE
40 HINDLEY AVE RESIDENTIAL	150 mm	NO INFO AVAILABLE
42 HINDLEY AVE RESIDENTIAL	150 mm	NO INFO AVAILABLE
44 HINDLEY AVE RESIDENTIAL	150 mm	NO INFO AVAILABLE
45 HINDLEY AVE RESIDENTIAL	150 mm	NO INFO AVAILABLE
46 HINDLEY AVE RESIDENTIAL	150 mm	NO INFO AVAILABLE

MATCH LINE 2+25 FOR CONTINUATION SEE DRAWING 06027

WARNING

IF POWER EQUIPMENT OR EXPLOSIVES ARE TO BE USED FOR EXCAVATION ON THIS PROJECT THE CONTRACTOR MUST:
 1) NOTIFY THE GAS COMPANY OF THE PROPOSED LOCATION OF EXCAVATION.
 2) TAKE PRECAUTION TO AVOID DAMAGE TO GAS COMPANY INSTALLATIONS.
 SEE PROVINCIAL REGULATION 140/92 FOR DETAILS

METRIC

WHOLE NUMBERS INDICATE MILLIMETRES
 DECIMALIZED NUMBERS INDICATE METRES

NOTE:
STATIONS ALONG N P OF HINDLEY AVE.

BENCH MARK: 84R746- N.W. Cor. Worthington Ave. & Fitzpatrick Rd., Tblt. on top of 0.05m dia. x 2.4m iron pipe, 3m S. of N.L. of Worthington Ave. & 2.1m E. of W.L. of Fitzpatrick Rd.

BID OPPORTUNITY 449-2007



Certificate of Authorization
 Stantec Consulting Ltd.
 No. 1301 Expiry: April 30, 2008

EXISTING	LEGEND-PLAN	PROPOSED	EXISTING	LEGEND-PLAN	PROPOSED	EXISTING	LEGEND-PROFILE	PROPOSED
150 WM	WATERMAIN	150 WM	HYDRO	HYDRO	150 WM	WATERMAIN	150 WM	WATERMAIN
300 LDS	LAND DRAINAGE SEWER	300 LDS	M.T.S.	M.T.S.	300 LDS	LAND DRAINAGE SEWER	300 LDS	LAND DRAINAGE SEWER
250 WWS	WASTE WATER SEWER	250 WWS	CONCRETE	CONCRETE	250 WWS	WASTE WATER SEWER	250 WWS	WASTE WATER SEWER
MANHOLE	MANHOLE	MANHOLE	ASPHALT	ASPHALT	MANHOLE	MANHOLE	MANHOLE	MANHOLE
CATCH BASIN	CATCH BASIN	CATCH BASIN	SIDEWALK	SIDEWALK	CATCH BASIN	CATCH BASIN	CATCH BASIN	CATCH BASIN
CURB INLET	CURB INLET	CURB INLET	PROPERTY LINE	PROPERTY LINE	CURB INLET	CURB INLET	CURB INLET	CURB INLET
JUNCTIONS	JUNCTIONS	JUNCTIONS	SURVEY BAR	SURVEY BAR	JUNCTIONS	JUNCTIONS	JUNCTIONS	JUNCTIONS
CULVERT	CULVERT	CULVERT	DITCH	DITCH	CULVERT	CULVERT	CULVERT	CULVERT
GAS	GAS	GAS	ELEVATION	ELEVATION	GAS	GAS	GAS	GAS
LEGEND-PLAN	LEGEND-PLAN	PROPOSED	SIDEWALK RAMP	SIDEWALK RAMP	LEGEND-PLAN	LEGEND-PLAN	PROPOSED	PROPOSED

LOCATION APPROVED UNDERGROUND STRUCTURES		DATE	
SUPV. U/G STRUCTURES COMMITTEE	DATE	SUPV. U/G STRUCTURES COMMITTEE	DATE

NOTE:
 LOCATION OF UNDERGROUND STRUCTURES AS SHOWN ARE BASED ON THE BEST INFORMATION AVAILABLE. BUT NO GUARANTEE IS GIVEN THAT ALL EXISTING UTILITIES ARE SHOWN OR THAT THE GIVEN LOCATIONS ARE EXACT. CONFIRMATION OF EXISTENCE AND EXACT LOCATION OF ALL SERVICES MUST BE OBTAINED FROM THE INDIVIDUAL UTILITIES BEFORE PROCEEDING WITH CONSTRUCTION.

Stantec Consulting Ltd. 905 Waverley Street, Winnipeg, Manitoba Tel 204-489-5900 Fax 204-453-9012		ENGINEER'S SEAL ORIGINAL SEALED BY H.A. KATZ P. ENG. 07.07.17
DESIGNED BY: J.K.H. CHECKED BY: W.B. DRAWN BY: J.K.H. APPROVED BY: H.A.K.	HOR. SCALE: 1:250 VERTICAL: 1:50	RELEASED FOR CONSTRUCTION: DATE:
NO. REVISIONS: DATE: BY:	DATE: 07.04.30	CONSULTANT DRAWING NO. C-202

 THE CITY OF WINNIPEG WATER AND WASTE DEPARTMENT		SHEET 2 OF 19 CAD FILE DRAWING NUMBER 09720C-202685.dwg CITY DRAWING NUMBER 06026
HINDLEY AVENUE 4TH MH W OF FITZPATRICK RD TO 3RD MH W OF FITZPATRICK RD STA 0+97 TO STA. 2+25 2007 SEWER RENEWALS BY CIPP LINING		