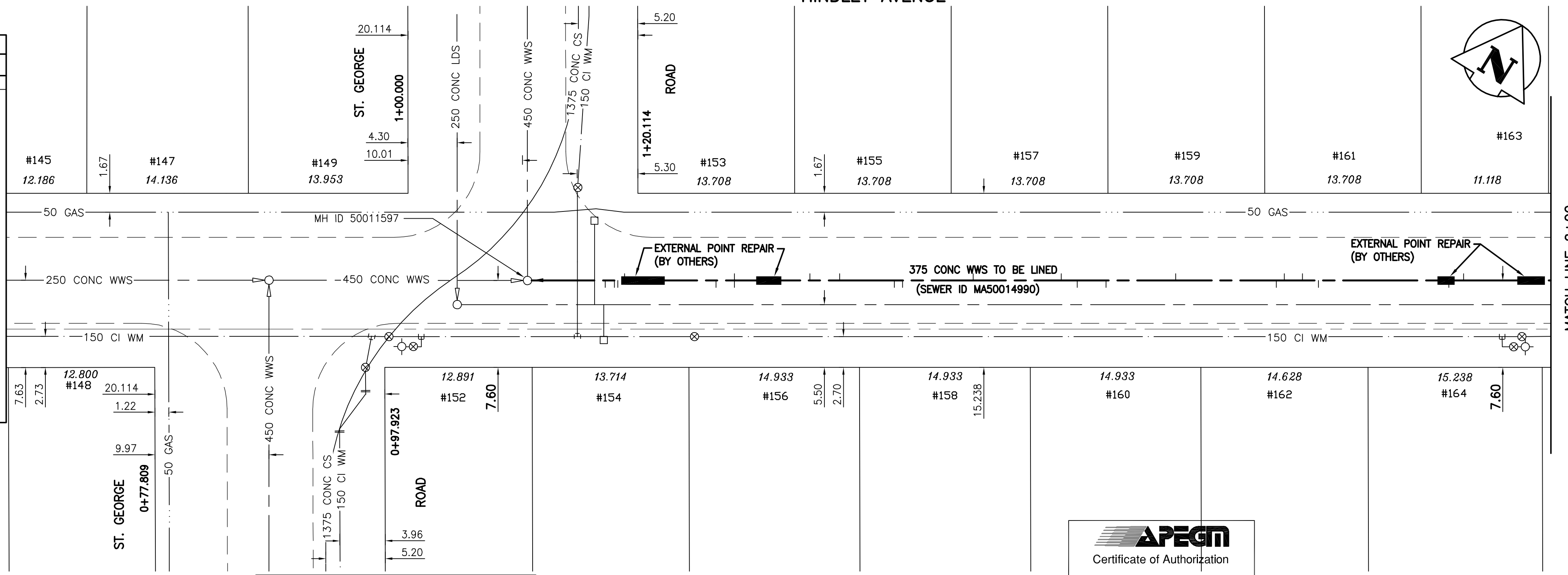


235.0 234.0 233.0 232.0 231.0 230.0 229.0 228.0 227.0 226.0 225.0 224.0

1+00 1+25 1+50 1+75 2+00

MATCH LINE

HINDLEY AVENUE



SEWER SERVICE INFORMATION

ADDRESS	SIZE	PROPERTY LINE LOCATION
152 HINDLEY AVE RESIDENTIAL	150 mm	NO INFO AVAILABLE
153 HINDLEY AVE RESIDENTIAL	150 mm	NO INFO AVAILABLE
154 HINDLEY AVE RESIDENTIAL	150 mm	2.1 m E of W HL
155 HINDLEY AVE RESIDENTIAL	150 mm	NO INFO AVAILABLE
156 HINDLEY AVE RESIDENTIAL	150 mm	NO INFO AVAILABLE
157 HINDLEY AVE RESIDENTIAL	150 mm	NO INFO AVAILABLE
158 HINDLEY AVE RESIDENTIAL	150 mm	NO INFO AVAILABLE
159 HINDLEY AVE RESIDENTIAL	150 mm	NO INFO AVAILABLE
160 HINDLEY AVE RESIDENTIAL	150 mm	NO INFO AVAILABLE
161 HINDLEY AVE RESIDENTIAL	150 mm	4.6 m W of E HL
162 HINDLEY AVE RESIDENTIAL	150 mm	NO INFO AVAILABLE
163 HINDLEY AVE RESIDENTIAL	150 mm	2.1 m E of W HL
164 HINDLEY AVE RESIDENTIAL	150 mm	NO INFO AVAILABLE

MATCH LINE 2+00 FOR CONTINUATION SEE DRAWING 06029

SEWER JUNCTION INFORMATION (MA50014990)

2ND MH WEST OF ST. ANNE'S RD (MHID 50011601) TO MH AT ST. GEORGE RD (MHID 50011597)

DISTANCE FROM 2ND MH WEST OF ST. ANNE'S RD (MH 50011601) \*

3.0 WEST 150 MM DIA. NORTH CNI LIVE
15.1 WEST 150 MM DIA. NORTH CNI LIVE
15.9 WEST 150 MM DIA. NORTH CN
20.8 WEST 150 MM DIA. SOUTH CNI LIVE
22.3 WEST 150 MM DIA. NORTH JN LIVE
31.5 WEST 150 MM DIA. NORTH CNI LIVE
32.8 WEST 150 MM DIA. SOUTH CNI LIVE
44.2 WEST 150 MM DIA. SOUTH JN
45.6 WEST 150 MM DIA. NORTH CN
47.3 WEST 150 MM DIA. NORTH JN CAPPED
47.9 WEST 150 MM DIA. SOUTH CNI LIVE
56.5 WEST 150 MM DIA. NORTH CNI LIVE
62.7 WEST 150 MM DIA. SOUTH JN CAPPED
65.1 WEST 150 MM DIA. SOUTH CN LIVE
66.6 WEST 150 MM DIA. NORTH JN CAPPED
74.3 WEST 150 MM DIA. NORTH CNI LIVE
80.5 WEST 150 MM DIA. SOUTH JN CAPPED
81.2 WEST 150 MM DIA. SOUTH CNI LIVE
85.9 WEST 150 MM DIA. NORTH JN CAPPED
88.6 WEST 150 MM DIA. NORTH CNI LIVE
95.3 WEST 150 MM DIA. NORTH JN CAPPED
95.3 WEST 150 MM DIA. SOUTH CN
96.8 WEST 150 MM DIA. SOUTH JN CAPPED
104.8 WEST 150 MM DIA. NORTH CNI LIVE
105.4 WEST 150 MM DIA. SOUTH JN CAPPED
105.8 WEST 150 MM DIA. SOUTH CNI CAPPED
106.5 WEST 150 MM DIA. SOUTH CNI

WARNING

IF POWER EQUIPMENT OR EXPLOSIVES ARE TO BE USED FOR EXCAVATION ON THIS PROJECT THE CONTRACTOR MUST:

- 1) NOTIFY THE GAS COMPANY OF THE PROPOSED LOCATION OF EXCAVATION.
- 2) TAKE PRECAUTION TO AVOID DAMAGE TO GAS COMPANY INSTALLATIONS.

SEE PROVINCIAL REGULATION 140/92 FOR DETAILS

METRIC

WHOLE NUMBERS INDICATE MILLIMETRES  
DECIMALIZED NUMBERS INDICATE METRES

NOTE: STATIONS ALONG N E OF HINDLEY AVE.

BENCH MARK: 74M514 - Tblt. in E. Conc. foundation of new portion of Manitoba Telephone System Bldg., No. 460 St. Anne's Rd., 1.7m S. of N.E. Cor. of Bldg.

**APEGM**  
Certificate of Authorization  
Stantec Consulting Ltd.  
No. 1301 Expiry: April 30, 2008

BID OPPORTUNITY 449-2007

150 WM	WATERMAIN	150 WM	HYDRO	150 WM	WATERMAIN	150 WM	WATERMAIN	150 WM	WATERMAIN
+	HYDRANT	+	M.T.S.	+	HYDRANT, VALVE	+	HYDRANT, VALVE	+	HYDRANT, VALVE
o	VALVE	o	CONCRETE	o	LAND DRAINAGE SEWER	o	LAND DRAINAGE SEWER	o	LAND DRAINAGE SEWER
---	LAND DRAINAGE SEWER	---	ASPHALT	---	WASTE WATER SEWER	---	WASTE WATER SEWER	---	WASTE WATER SEWER
---	WASTE WATER SEWER	---	SIDEWALK	---	PROFILE	---	PROFILE	---	PROFILE
o	MANHOLE	o	PROPERTY LINE	o	NORTH OR WEST GUTTER	o	NORTH OR WEST GUTTER	o	NORTH OR WEST GUTTER
□	CATCH BASIN	□	SURVEY BAR	□	SOUTH OR EAST GUTTER	□	SOUTH OR EAST GUTTER	□	SOUTH OR EAST GUTTER
▽	CURB INLET	▽	DITCH	▽	NORTH OR WEST DITCH	▽	NORTH OR WEST DITCH	▽	NORTH OR WEST DITCH
+	JUNCTIONS	+	ELEVATION	+	SOUTH OR EAST DITCH	+	SOUTH OR EAST DITCH	+	SOUTH OR EAST DITCH
---	CULVERT	---	SIDEWALK RAMP	---	NORTH OR WEST DITCH	---	NORTH OR WEST DITCH	---	NORTH OR WEST DITCH
---	GAS	---		---	SOUTH OR EAST DITCH	---	SOUTH OR EAST DITCH	---	SOUTH OR EAST DITCH
---	EXISTING	---	LEGEND-PLAN	---	LEGEND-PROFILE	---	LEGEND-PROFILE	---	LEGEND-PROFILE
---	LEGEND-PLAN	---	PROPOSED	---	PROPOSED	---	PROPOSED	---	PROPOSED

LOCATION APPROVED UNDERGROUND STRUCTURES

SUPV. U/G STRUCTURES COMMITTEE DATE

NOTE: LOCATION OF UNDERGROUND STRUCTURES AS SHOWN ARE BASED ON THE BEST INFORMATION AVAILABLE BUT NO GUARANTEE IS GIVEN THAT ALL EXISTING UTILITIES ARE SHOWN OR THAT THE GIVEN LOCATIONS ARE EXACT. CONFIRMATION OF EXISTENCE AND EXACT LOCATION OF ALL SERVICES MUST BE OBTAINED FROM THE INDIVIDUAL UTILITIES BEFORE PROCEEDING WITH CONSTRUCTION.

B.M. 62-001  
ELEV. 232.121m

NO.	REVISIONS	DATE	BY

**Stantec Consulting Ltd.**  
905 Waverley Street, Winnipeg, Manitoba  
Tel 204-489-5900 Fax 204-453-9012

DESIGNED BY: J.K.H. CHECKED BY: W.B.  
DRAWN BY: J.K.H. APPROVED BY: H.A.K.  
HOR. SCALE: 1:250  
VERTICAL: 1:50  
RELEASED FOR CONSTRUCTION: \_\_\_\_\_  
DATE: 07.05.09

ENGINEER'S SEAL

ORIGINAL SEALED BY  
H.A. KATZ  
P. ENG.  
07.07.17

CONSULTANT DRAWING NO.  
C-204

**THE CITY OF WINNIPEG**  
WATER AND WASTE DEPARTMENT  
ENGINEERING DIVISION

**HINDLEY AVENUE**  
MH AT ST. GEORGE RD (E LEG) TO  
2ND MH W OF ST. ANNE'S RD  
STA 1+0 TO STA. 2+00  
2007 SEWER RENEWALS BY CIPP LINING

SHEET 4 OF 19  
CAD FILE DRAWING NUMBER  
09720C-202685.dwg  
CITY DRAWING NUMBER  
06028