

SEWER SERVICE INFORMATION

ADDRESS	SIZE	PROPERTY LINE LOCATION
186 HINDLEY AVE RESIDENTIAL	NO INFO AVAILABLE	1.8 m E of W HL
187 HINDLEY AVE RESIDENTIAL	NO INFO AVAILABLE	NO INFO AVAILABLE
188 HINDLEY AVE RESIDENTIAL	NO INFO AVAILABLE	NO INFO AVAILABLE
189 HINDLEY AVE RESIDENTIAL	NO INFO AVAILABLE	NO INFO AVAILABLE
190 HINDLEY AVE RESIDENTIAL	NO INFO AVAILABLE	NO INFO AVAILABLE
191/193 HINDLEY AVE RESIDENTIAL	NO INFO AVAILABLE	NO INFO AVAILABLE
196 HINDLEY AVE RESIDENTIAL	NO INFO AVAILABLE	NO INFO AVAILABLE
200 HINDLEY AVE RESIDENTIAL	NO INFO AVAILABLE	NO INFO AVAILABLE
160 HINDLEY AVE RESIDENTIAL	NO INFO AVAILABLE	NO INFO AVAILABLE
161 HINDLEY AVE RESIDENTIAL	NO INFO AVAILABLE	NO INFO AVAILABLE
162 HINDLEY AVE RESIDENTIAL	NO INFO AVAILABLE	NO INFO AVAILABLE
163 HINDLEY AVE RESIDENTIAL	NO INFO AVAILABLE	NO INFO AVAILABLE
164 HINDLEY AVE RESIDENTIAL	NO INFO AVAILABLE	NO INFO AVAILABLE

SEWER JUNCTION INFORMATION (MA50014491)
 MH AT ST. ANNE'S RD (MHID 50011602) TO
 1ST MH WEST OF ST. ANNE'S RD (MHID 50011600)

DISTANCE FROM MH AT ST. ANNE'S RD (MH 50011602) *	SIZE	DIRECTION	TYPE	STATUS
20.5	WEST 150 MM DIA.	NORTH	CX	LIVE BROKEN
32.2	WEST 150 MM DIA.	SOUTH	CN	LIVE
36.1	WEST 150 MM DIA.	NORTH	CNI	LIVE
38.5	WEST 150 MM DIA.	SOUTH	JN	CAPPED
40.8	WEST 150 MM DIA.	SOUTH	CNI	LIVE
53.3	WEST 150 MM DIA.	SOUTH	CNI	LIVE
54.1	WEST 150 MM DIA.	SOUTH	JN	CAPPED
59.1	WEST 150 MM DIA.	NORTH	CNI	LIVE
65.8	WEST 150 MM DIA.	SOUTH	JN	LIVE
82.1	WEST 150 MM DIA.	SOUTH	JN	LIVE
82.3	WEST 150 MM DIA.	NORTH	CNI	LIVE
83.8	WEST 150 MM DIA.	NORTH	JN	CAPPED
94.7	WEST 150 MM DIA.	NORTH	CNI	LIVE
100.8	WEST 150 MM DIA.	SOUTH	JN	CAPPED
103.1	WEST 150 MM DIA.	SOUTH	CNI	LIVE

* Information from Sewer Video Inspection

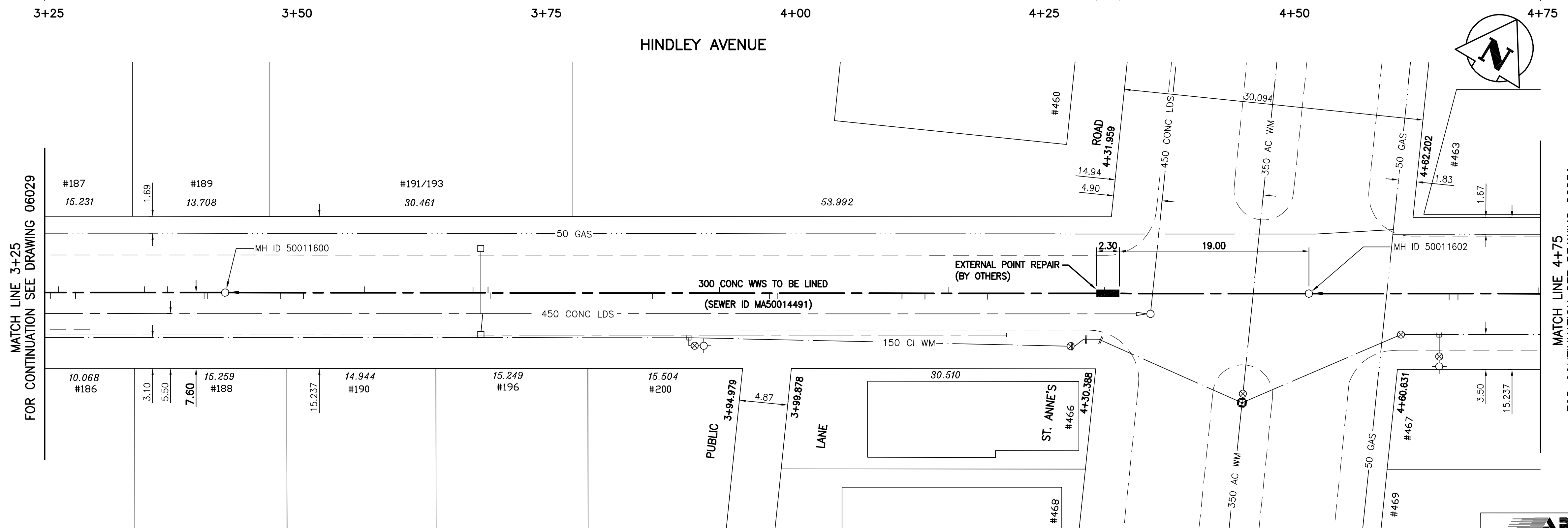
WARNING

IF POWER EQUIPMENT OR EXPLOSIVES ARE TO BE USED FOR EXCAVATION ON THIS PROJECT THE CONTRACTOR MUST:
 1) NOTIFY THE GAS COMPANY OF THE PROPOSED LOCATION OF EXCAVATION.
 2) TAKE PRECAUTION TO AVOID DAMAGE TO GAS COMPANY INSTALLATIONS.
 SEE PROVINCIAL REGULATION 140/92 FOR DETAILS

METRIC

WHOLE NUMBERS INDICATE MILLIMETRES
 DECIMALIZED NUMBERS INDICATE METRES

NOTE:
 STATIONS ALONG N P OF HINDLEY AVE.



BENCH MARK: 74M514 - Tblt. in E. Conc. foundation of new portion of Manitoba Telephone System Bldg., No. 460 St. Anne's Rd., 1.7m S. of N.E. Cor. of Bldg.

BID OPPORTUNITY 449-2007



150 WM	WATERMAIN	150 WM	HYDRO	150 WM	WATERMAIN	150 WM
⊕	HYDRANT	⊕	M.T.S.	⊕	HYDRANT, VALVE	⊕
⊙	VALVE	⊙	CONCRETE	⊙	LAND DRAINAGE SEWER	⊙
---	LAND DRAINAGE SEWER	---	ASPHALT	---	WASTE WATER SEWER	---
---	WASTE WATER SEWER	---	SIDEWALK	---	Q PROFILE	---
○	MANHOLE	○	PROPERTY LINE	□	NORTH OR WEST GUTTER	---
□	CATCH BASIN	□	SURVEY BAR	+	SOUTH OR EAST GUTTER	---
▽	CURB INLET	▽	DITCH	◇	NORTH OR WEST P	---
+	JUNCTIONS	+	ELEVATION	○	SOUTH OR EAST P	---
---	CULVERT	---	SIDEWALK RAMP	△	NORTH OR WEST DITCH	---
---	GAS	---		▽	SOUTH OR EAST DITCH	---
---	EXISTING	---	LEGEND-PLAN	---	LEGEND-PROFILE	---
---	LEGEND-PLAN	---	PROPOSED	---	PROPOSED	---

LOCATION APPROVED UNDERGROUND STRUCTURES
 SUPV. U/G STRUCTURES COMMITTEE DATE
 NOTE:
 LOCATION OF UNDERGROUND STRUCTURES AS SHOWN ARE BASED ON THE BEST INFORMATION AVAILABLE BUT NO GUARANTEE IS GIVEN THAT ALL EXISTING UTILITIES ARE SHOWN OR THAT THE GIVEN LOCATIONS ARE EXACT. CONFIRMATION OF EXISTENCE AND EXACT LOCATION OF ALL SERVICES MUST BE OBTAINED FROM THE INDIVIDUAL UTILITIES BEFORE PROCEEDING WITH CONSTRUCTION.

NO.	REVISIONS	DATE	BY

Stantec Consulting Ltd.
 905 Waverly Street, Winnipeg, Manitoba
 Tel 204-489-5900 Fax 204-453-9012

DESIGNED BY: J.K.H.	CHECKED BY: W.B.
DRAWN BY: J.K.H.	APPROVED BY: H.A.K.
HOR. SCALE: 1:250	RELEASED FOR CONSTRUCTION: DATE
VERTICAL: 1:50	DATE: 07.05.09

ENGINEER'S SEAL
 ORIGINAL SEALED BY H.A. KATZ P. ENG. 07.07.17
 CONSULTANT DRAWING NO. C-206

THE CITY OF WINNIPEG
 WATER AND WASTE DEPARTMENT
 ENGINEERING DIVISION

HINDLEY AVENUE
 1ST MH W OF ST. ANNE'S RD TO
 MH AT ST. ANNE'S RD
 STA 3+25 TO STA. 4+75

2007 SEWER RENEWALS BY CIPP LINING

SHEET 6 OF 19
 CAD FILE DRAWING NUMBER 09720C-202685.dwg
 CITY DRAWING NUMBER 06030