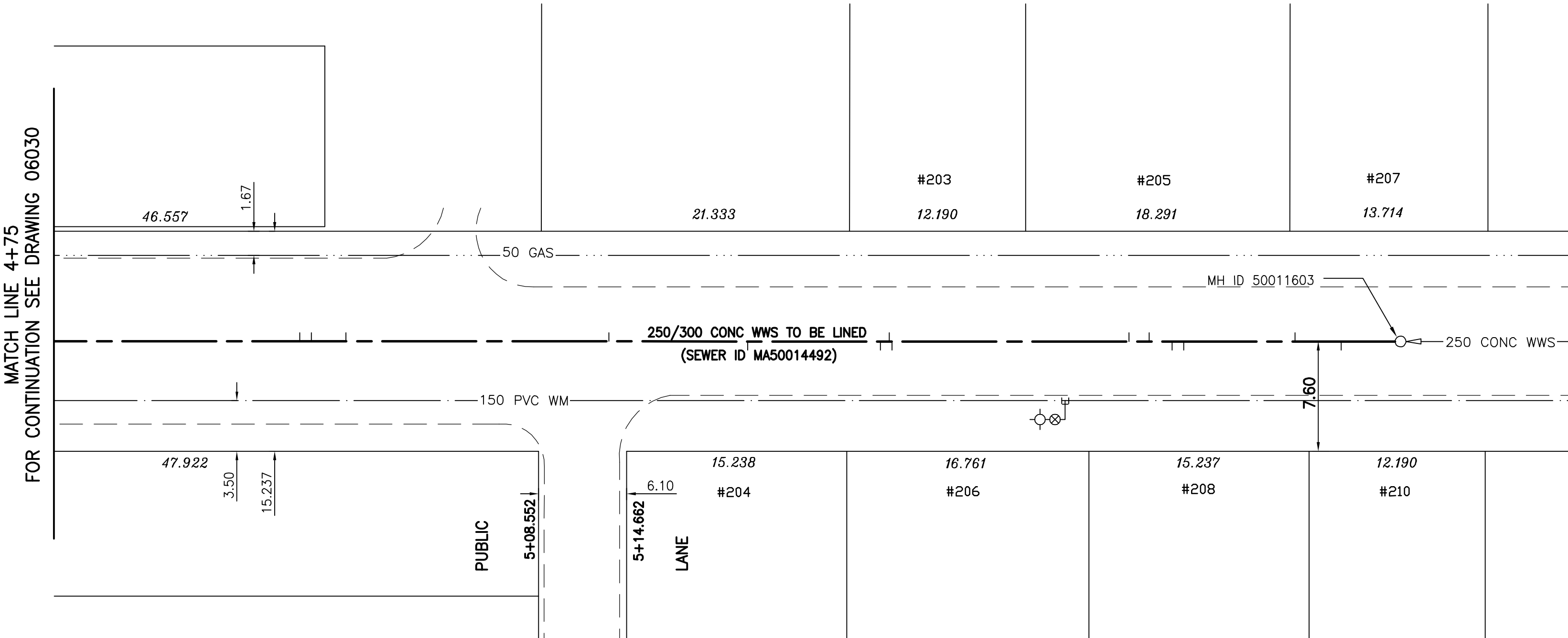


4+75 5+00 5+25 5+50 5+75 6+00

HINDLEY AVENUE



SEWER JUNCTION INFORMATION (MA50014492)			
1ST MH EAST OF ST. ANNE'S RD (MHID 50011603) TO MH AT ST. ANNE'S RD (MHID 50011602)			
DISTANCE FROM 1ST MH EAST ST. ANNE'S RD (MH 50011603) *			
4.1	WEST	150 MM DIA.	SOUTH JN
7.3	WEST	150 MM DIA.	NORTH JN LIVE
15.0	WEST	150 MM DIA.	SOUTH JN CAPPED
15.8	WEST	150 MM DIA.	SOUTH CNI LIVE
17.4	WEST	150 MM DIA.	NORTH CN
18.8	WEST	150 MM DIA.	NORTH JN CAPPED
35.2	WEST	150 MM DIA.	SOUTH JN
35.4	WEST	150 MM DIA.	NORTH JN LIVE
36.0	WEST	150 MM DIA.	SOUTH CN LIVE
45.2	WEST	150 MM DIA.	SOUTH CN LIVE
54.8	WEST	150 MM DIA.	NORTH CNI LIVE
73.0	WEST	150 MM DIA.	NORTH CNI LIVE
75.4	WEST	150 MM DIA.	NORTH JN CAPPED
76.2	WEST	150 MM DIA.	NORTH CNI LIVE
93.4	WEST	150 MM DIA.	NORTH JN
101.5	WEST	150 MM DIA.	SOUTH CN LIVE
102.4	WEST	150 MM DIA.	SOUTH JN CAPPED

SEWER SERVICE INFORMATION		
ADDRESS	SIZE	PROPERTY LINE LOCATION
203 HINDLEY AVE RESIDENTIAL	150 mm	NO INFO AVAILABLE
204 HINDLEY AVE RESIDENTIAL	150 mm	NO INFO AVAILABLE
205 HINDLEY AVE RESIDENTIAL	150 mm	NO INFO AVAILABLE
206 HINDLEY AVE RESIDENTIAL	150 mm	NO INFO AVAILABLE
207 HINDLEY AVE RESIDENTIAL	150 mm	4.9 m E of W HL
208 HINDLEY AVE RESIDENTIAL	150 mm	NO INFO AVAILABLE
210 HINDLEY AVE RESIDENTIAL	150 mm	NO INFO AVAILABLE

* Information from Sewer Video Inspection

WARNING

IF POWER EQUIPMENT OR EXPLOSIVES ARE TO BE USED FOR EXCAVATION ON THIS PROJECT THE CONTRACTOR MUST:
 1) NOTIFY THE GAS COMPANY OF THE PROPOSED LOCATION OF EXCAVATION.
 2) TAKE PRECAUTION TO AVOID DAMAGE TO GAS COMPANY INSTALLATIONS.
 SEE PROVINCIAL REGULATION 140/92 FOR DETAILS

METRIC

WHOLE NUMBERS INDICATE MILLIMETRES
 DECIMALIZED NUMBERS INDICATE METRES

NOTE:
STATIONS ALONG N E OF HINDLEY AVE.

BENCH MARK: 74M514 - Tblt. in E. Conc. foundation of new portion of Manitoba Telephone System Bldg., No. 460 St. Anne's Rd., 1.7m S. of N.E. Cor. of Bldg.

BID OPPORTUNITY 449-2007



150 WM	WATERMAIN	150 WM	HYDRO	150 WM	WATERMAIN	150 WM	HYDRO	150 WM	WATERMAIN	150 WM	HYDRO
+	HYDRANT	+	M.T.S.	+	HYDRANT, VALVE	+	M.T.S.	+	HYDRANT, VALVE	+	M.T.S.
o	VALVE	o	CONCRETE	o	LAND DRAINAGE SEWER	o	CONCRETE	o	LAND DRAINAGE SEWER	o	CONCRETE
---	LAND DRAINAGE SEWER	---	ASPHALT	---	WASTE WATER SEWER	---	ASPHALT	---	WASTE WATER SEWER	---	ASPHALT
---	WASTE WATER SEWER	---	SIDEWALK	---	PROFILE	---	SIDEWALK	---	PROFILE	---	SIDEWALK
o	MANHOLE	o	PROPERTY LINE	o	NORTH OR WEST GUTTER	o	PROPERTY LINE	o	NORTH OR WEST GUTTER	o	PROPERTY LINE
□	CATCH BASIN	□	SURVEY BAR	□	SOUTH OR EAST GUTTER	□	SURVEY BAR	□	SOUTH OR EAST GUTTER	□	SURVEY BAR
▽	CURB INLET	▽	DITCH	▽	NORTH OR WEST DITCH	▽	DITCH	▽	NORTH OR WEST DITCH	▽	DITCH
+	JUNCTIONS	+	ELEVATION	+	SOUTH OR EAST DITCH	+	ELEVATION	+	SOUTH OR EAST DITCH	+	ELEVATION
---	CULVERT	---	SIDEWALK RAMP	---	NORTH OR WEST DITCH	---	SIDEWALK RAMP	---	NORTH OR WEST DITCH	---	SIDEWALK RAMP
---	GAS	---		---	SOUTH OR EAST DITCH	---		---	SOUTH OR EAST DITCH	---	
---	EXISTING	---	LEGEND-PLAN	---	PROPOSED	---	EXISTING	---	LEGEND-PROFILE	---	PROPOSED

LOCATION APPROVED UNDERGROUND STRUCTURES

SUPV. U/G STRUCTURES COMMITTEE DATE

NOTE:
LOCATION OF UNDERGROUND STRUCTURES AS SHOWN ARE BASED ON THE BEST INFORMATION AVAILABLE BUT NO GUARANTEE IS GIVEN THAT ALL EXISTING UTILITIES ARE SHOWN OR THAT THE GIVEN LOCATIONS ARE EXACT. CONFIRMATION OF EXISTENCE AND EXACT LOCATION OF ALL SERVICES MUST BE OBTAINED FROM THE INDIVIDUAL UTILITIES BEFORE PROCEEDING WITH CONSTRUCTION.

NO.	REVISIONS	DATE	BY

Stantec Consulting Ltd.
 905 Waverly Street, Winnipeg, Manitoba
 Tel 204-489-5900 Fax 204-453-9012

DESIGNED BY: J.K.H. CHECKED BY: W.B.
 DRAWN BY: J.K.H. APPROVED BY: H.A.K.

HOR. SCALE: 1:250
 VERTICAL: 1:50

RELEASED FOR CONSTRUCTION: _____
 DATE: _____

ENGINEER'S SEAL

ORIGINAL SEALED BY H.A. KATZ P. ENG. 07.07.17

CONSULTANT DRAWING NO. C-207

THE CITY OF WINNIPEG
 WATER AND WASTE DEPARTMENT
 ENGINEERING DIVISION

HINDLEY AVENUE
 MH AT ST. ANNE'S RD TO 1ST MH E OF ST. ANNE'S RD
 STA 4+75 TO STA. 5+68

2007 SEWER RENEWALS BY CIPP LINING

SHEET 7 OF 19
 CAD FILE DRAWING NUMBER 09720C-202685.dwg
 CITY DRAWING NUMBER 06031