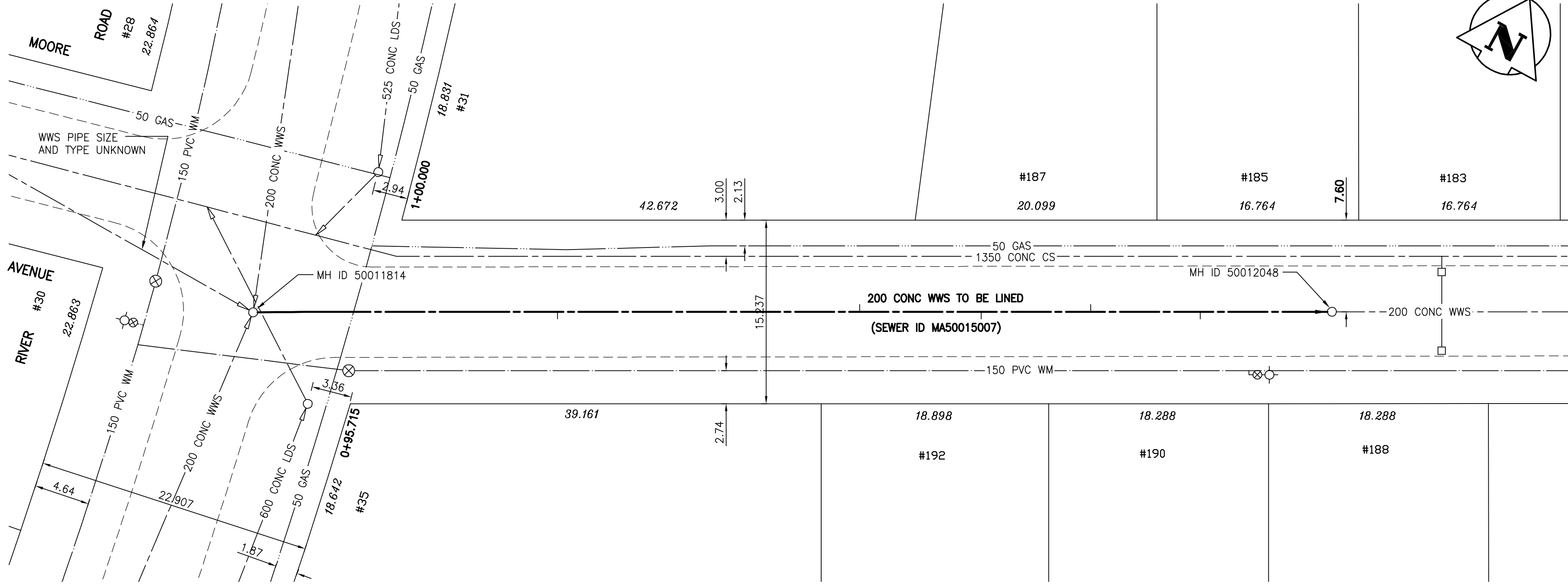


MOORE AVENUE



SEWER SERVICE INFORMATION

ADDRESS	SIZE	PROPERTY LINE LOCATION
31 RIVER RD RESIDENTIAL	NO INFO AVAILABLE	NO INFO AVAILABLE
35 RIVER RD RESIDENTIAL	NO INFO AVAILABLE	NO INFO AVAILABLE
192 MOORE AVE RESIDENTIAL	150 mm	NO INFO AVAILABLE
190 MOORE AVE RESIDENTIAL	150 mm	NO INFO AVAILABLE
188 MOORE AVE RESIDENTIAL	150 mm	NO INFO AVAILABLE
187 MOORE AVE RESIDENTIAL	150 mm	NO INFO AVAILABLE
185 MOORE AVE RESIDENTIAL	150 mm	NO INFO AVAILABLE
183 MOORE AVE RESIDENTIAL	150 mm	NO INFO AVAILABLE

SEWER JUNCTION INFORMATION (MA50015007)

MH AT RIVER ROAD (MHID 50011814) TO 1ST MH EAST OF RIVER ROAD (MHID 50012048)			
DISTANCE FROM MH AT RIVER ROAD (MH 50011814) *			
25.3	EAST	150 MM DIA.	SOUTH JN LIVE
50.4	EAST	150 MM DIA.	NORTH JN LIVE
60.5	EAST	150 MM DIA.	SOUTH JN LIVE
69.6	EAST	150 MM DIA.	NORTH JN LIVE
78.7	EAST	150 MM DIA.	SOUTH JN LIVE

\* Information from Sewer Video Inspection

**WARNING**  
 IF POWER EQUIPMENT OR EXPLOSIVES ARE TO BE USED FOR EXCAVATION ON THIS PROJECT THE CONTRACTOR MUST:  
 1) NOTIFY THE GAS COMPANY OF THE PROPOSED LOCATION OF EXCAVATION.  
 2) TAKE PRECAUTION TO AVOID DAMAGE TO GAS COMPANY INSTALLATIONS.  
 SEE PROVINCIAL REGULATION 140/92 FOR DETAILS

**METRIC**  
 WHOLE NUMBERS INDICATE MILLIMETRES  
 DECIMALIZED NUMBERS INDICATE METRES

**NOTE:**  
 STATIONS ALONG N P OF MOORE AVE.

BENCH MARK: 84R724 - N.W. Cor. Moore Ave. & Flynn St., Tblt. on top of 0.05 m dia. x 2.4 m iron pipe, 7.9 m N. of C.L. asphalt Pav't. on Moore Ave. & 7.1 m W. of C.L. asphalt Pav't. on Flynn St.

BID OPPORTUNITY 449-2007



150 WM	WATERMAIN	150 WM	HYDRO	150 WM	WATERMAIN	150 WM	HYDRO	150 WM	WATERMAIN	150 WM	HYDRO
+	HYDRANT	+	M.T.S.	+	HYDRANT, VALVE	+	M.T.S.	+	HYDRANT, VALVE	+	M.T.S.
o	VALVE	o	CONCRETE	o	LAND DRAINAGE SEWER	o	CONCRETE	o	LAND DRAINAGE SEWER	o	CONCRETE
---	LAND DRAINAGE SEWER	---	ASPHALT	---	WASTE WATER SEWER	---	ASPHALT	---	WASTE WATER SEWER	---	ASPHALT
---	WASTE WATER SEWER	---	SIDEWALK	---	PROPERTY LINE	---	SIDEWALK	---	PROPERTY LINE	---	SIDEWALK
o	MANHOLE	o	SURVEY BAR	o	NORTH OR WEST GUTTER	o	SURVEY BAR	o	NORTH OR WEST GUTTER	o	SURVEY BAR
□	CATCH BASIN	□	DITCH	□	SOUTH OR EAST GUTTER	□	DITCH	□	SOUTH OR EAST GUTTER	□	DITCH
▽	CURB INLET	▽	ELEVATION	▽	NORTH OR WEST P	▽	ELEVATION	▽	NORTH OR WEST P	▽	ELEVATION
+	JUNCTIONS	+	SIDEWALK RAMP	+	SOUTH OR EAST P	+	SIDEWALK RAMP	+	SOUTH OR EAST P	+	SIDEWALK RAMP
---	CULVERT	---	---	---	NORTH OR WEST DITCH	---	---	---	NORTH OR WEST DITCH	---	---
---	GAS	---	---	---	SOUTH OR EAST DITCH	---	---	---	SOUTH OR EAST DITCH	---	---
---	EXISTING	---	LEGEND-PLAN	---	LEGEND-PROFILE	---	LEGEND-PLAN	---	LEGEND-PROFILE	---	LEGEND-PLAN
---	PROPOSED	---	PROPOSED	---	PROPOSED	---	PROPOSED	---	PROPOSED	---	PROPOSED

**LOCATION APPROVED UNDERGROUND STRUCTURES**

SUPV. U/G STRUCTURES COMMITTEE DATE

**NOTE:**  
 LOCATION OF UNDERGROUND STRUCTURES AS SHOWN ARE BASED ON THE BEST INFORMATION AVAILABLE BUT NO GUARANTEE IS GIVEN THAT ALL EXISTING UTILITIES ARE SHOWN OR THAT THE GIVEN LOCATIONS ARE EXACT. CONFIRMATION OF EXISTENCE AND EXACT LOCATION OF ALL SERVICES MUST BE OBTAINED FROM THE INDIVIDUAL UTILITIES BEFORE PROCEEDING WITH CONSTRUCTION.

NO.	REVISIONS	DATE	BY

**Stantec Consulting Ltd.**  
 905 Waverley Street, Winnipeg, Manitoba  
 Tel 204-489-5900 Fax 204-453-9012

DESIGNED BY: J.K.H. CHECKED BY: W.B.  
 DRAWN BY: J.K.H. APPROVED BY: H.A.K.

HOR. SCALE: 1:250  
 VERTICAL: 1:50

RELEASED FOR CONSTRUCTION: \_\_\_\_\_  
 DATE: \_\_\_\_\_

ENGINEER'S SEAL  
 ORIGINAL SEALED BY H.A. KATZ P. ENG. 07.07.17  
 CONSULTANT DRAWING NO. C-209

**THE CITY OF WINNIPEG**  
 WATER AND WASTE DEPARTMENT  
 ENGINEERING DIVISION

**MOORE AVENUE**  
 MH AT RIVER RD TO 1ST MH E OF RIVER RD  
 STA 0+88 TO STA. 1+77

2007 SEWER RENEWALS BY CIPP LINING

SHEET 9 OF 19  
 CAD FILE DRAWING NUMBER 09720C-209685.dwg  
 CITY DRAWING NUMBER 06033