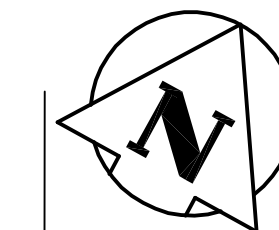


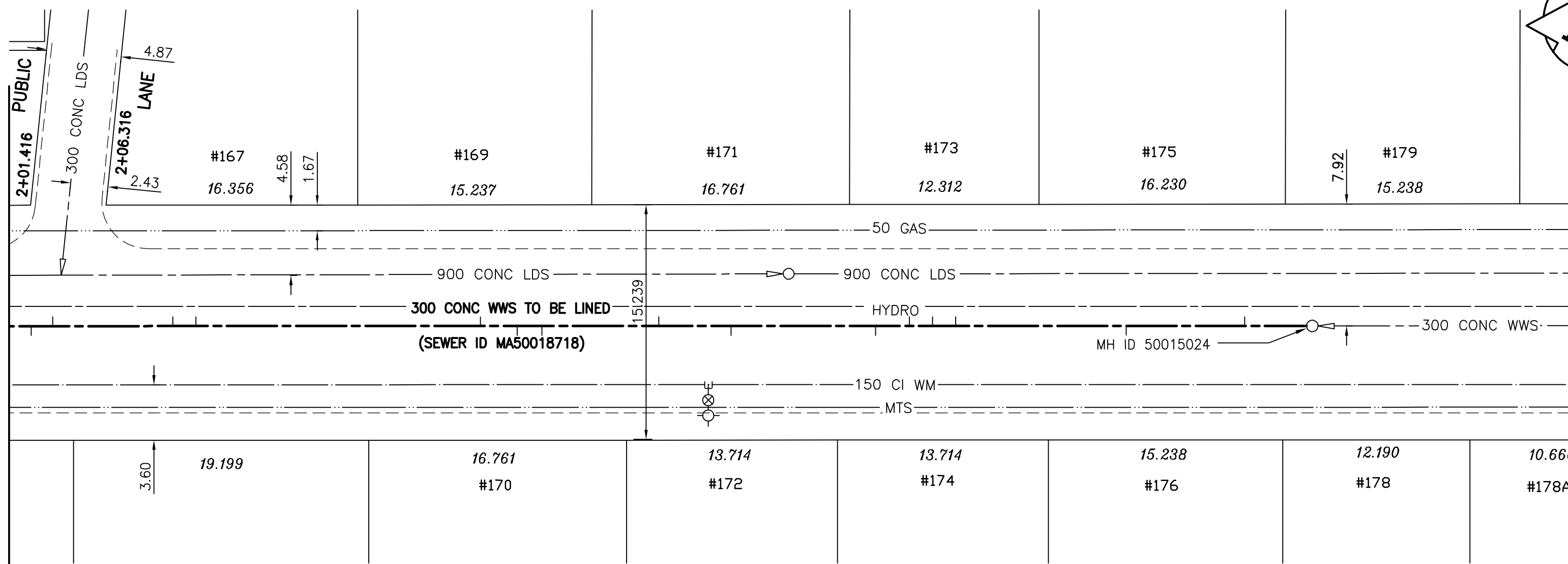
SADLER AVENUE



SEWER JUNCTION INFORMATION (MA50018718)					
1ST MH EAST OF ST. ANNE'S ROAD (MHID 50015024)					
MH AT ST. ANNE'S ROAD (MHID 50015025)					
DISTANCE FROM MH AT ST. ANNE'S ROAD (MH 50015024) *					
4.4	WEST	150 MM DIA.	NORTH	CNI	LIVE BROKEN
12.1	WEST	150 MM DIA.	SOUTH	CNI	LIVE
23.2	WEST	150 MM DIA.	NORTH	CNI	
24.7	WEST	150 MM DIA.	NORTH	CNI	
26.2	WEST	150 MM DIA.	NORTH	CNI	CAPPED
28.4	WEST	150 MM DIA.	SOUTH	CNI	
37.8	WEST	150 MM DIA.	SOUTH	CNI	LIVE
42.5	WEST	150 MM DIA.	NORTH	JN	LIVE
50.1	WEST	150 MM DIA.	SOUTH	CNI	LIVE
51.7	WEST	150 MM DIA.	SOUTH	JN	
54.1	WEST	150 MM DIA.	NORTH	CNI	LIVE
72.6	WEST	150 MM DIA.	NORTH	CNI	LIVE
74.1	WEST	150 MM DIA.	NORTH	JN	CAPPED
81.9	WEST	200 MM DIA.	NORTH	JN	LIVE
83.3	WEST	150 MM DIA.	SOUTH	CNI	LIVE

* Information from Sewer Video Inspection

MATCH LINE 2+00 FOR CONTINUATION SEE DRAWING 06036



SEWER SERVICE INFORMATION

ADDRESS	SIZE	PROPERTY LINE LOCATION
167 SADLER AVE RESIDENTIAL	150 mm	NO INFO AVAILABLE
169 SADLER AVE RESIDENTIAL	150 mm	NO INFO AVAILABLE
170 SADLER AVE RESIDENTIAL	150 mm	NO INFO AVAILABLE
171 SADLER AVE RESIDENTIAL	150 mm	NO INFO AVAILABLE
172 SADLER AVE RESIDENTIAL	150 mm	NO INFO AVAILABLE
173 SADLER AVE RESIDENTIAL	150 mm	NO INFO AVAILABLE
174 SADLER AVE RESIDENTIAL	150 mm	NO INFO AVAILABLE
175 SADLER AVE RESIDENTIAL	150 mm	NO INFO AVAILABLE
176 SADLER AVE RESIDENTIAL	150 mm	NO INFO AVAILABLE
178 SADLER AVE RESIDENTIAL	150 mm	NO INFO AVAILABLE
179 SADLER AVE RESIDENTIAL	150 mm	NO INFO AVAILABLE

WARNING

IF POWER EQUIPMENT OR EXPLOSIVES ARE TO BE USED FOR EXCAVATION ON THIS PROJECT THE CONTRACTOR MUST:
 1) NOTIFY THE GAS COMPANY OF THE PROPOSED LOCATION OF EXCAVATION.
 2) TAKE PRECAUTION TO AVOID DAMAGE TO GAS COMPANY INSTALLATIONS.
 SEE PROVINCIAL REGULATION 140/92 FOR DETAILS

METRIC

WHOLE NUMBERS INDICATE MILLIMETRES
 DECIMALIZED NUMBERS INDICATE METRES

NOTE:
STATIONS ALONG N P OF SADLER AVE.

BENCH MARK: 74M514 - Tblt. in E. Conc. foundation of new portion of Manitoba Telephone System Bldg., No. 460 St. Anne's Rd., 1.7m S. of N.E. Cor. of Bldg.



BID OPPORTUNITY 449-2007

150 WM	WATERMAIN	150 WM	HYDRO	150 WM	WATERMAIN	150 WM	HYDRANT, VALVE
+	HYDRANT	+	M.T.S.	+	HYDRANT, VALVE	+	+
o	VALVE	o	CONCRETE	o	LAND DRAINAGE SEWER	o	+
---	LAND DRAINAGE SEWER	---	ASPHALT	---	WASTE WATER SEWER	---	---
---	WASTE WATER SEWER	---	SIDEWALK	---	Q PROFILE	---	---
o	MANHOLE	o	PROPERTY LINE	o	NORTH OR WEST GUTTER	o	---
□	CATCH BASIN	□	SURVEY BAR	□	SOUTH OR EAST GUTTER	□	---
▽	CURB INLET	▽	DITCH	▽	NORTH OR WEST P	▽	---
+	JUNCTIONS	+	ELEVATION	+	SOUTH OR EAST P	+	---
---	CULVERT	---	SIDEWALK RAMP	---	NORTH OR WEST DITCH	---	---
---	GAS	---		---	SOUTH OR EAST DITCH	---	---
---	EXISTING	---	LEGEND-PLAN	---	LEGEND-PROFILE	---	---
---	LEGEND-PLAN	---	PROPOSED	---	PROPOSED	---	---

LOCATION APPROVED UNDERGROUND STRUCTURES	
SUPV. U/G STRUCTURES COMMITTEE	DATE
NOTE: LOCATION OF UNDERGROUND STRUCTURES AS SHOWN ARE BASED ON THE BEST INFORMATION AVAILABLE BUT NO GUARANTEE IS GIVEN THAT ALL EXISTING UTILITIES ARE SHOWN OR THAT THE GIVEN LOCATIONS ARE EXACT. CONFIRMATION OF EXISTENCE AND EXACT LOCATION OF ALL SERVICES MUST BE OBTAINED FROM THE INDIVIDUAL UTILITIES BEFORE PROCEEDING WITH CONSTRUCTION.	

NO.	REVISIONS	DATE	BY

Stantec Consulting Ltd.	
DESIGNED BY: J.K.H.	CHECKED BY: W.B.
DRAWN BY: J.K.H.	APPROVED BY: H.A.K.
HOR. SCALE: 1:250	RELEASED FOR CONSTRUCTION:
VERTICAL: 1:50	DATE: 07.05.09

ENGINEER'S SEAL	
ORIGINAL SEALED BY: H.A. KATZ	P. ENG. 07.07.17
CONSULTANT DRAWING NO. C-213	

THE CITY OF WINNIPEG
 WATER AND WASTE DEPARTMENT
 ENGINEERING DIVISION

SADLER AVENUE
 MH AT ST. ANNE'S RD TO
 1ST MH E OF ST. ANNE'S RD
 STA 2+00 TO STA. 2+87

2007 SEWER RENEWALS BY CIPP LINING

SHEET 13 OF 19
 CAD FILE DRAWING NUMBER 09720C-212685.dwg
 CITY DRAWING NUMBER 06037

X:\112\dwg\11209720\win\09720C-212685.dwg
 2007-07-17 11:34:48 By: h.katz