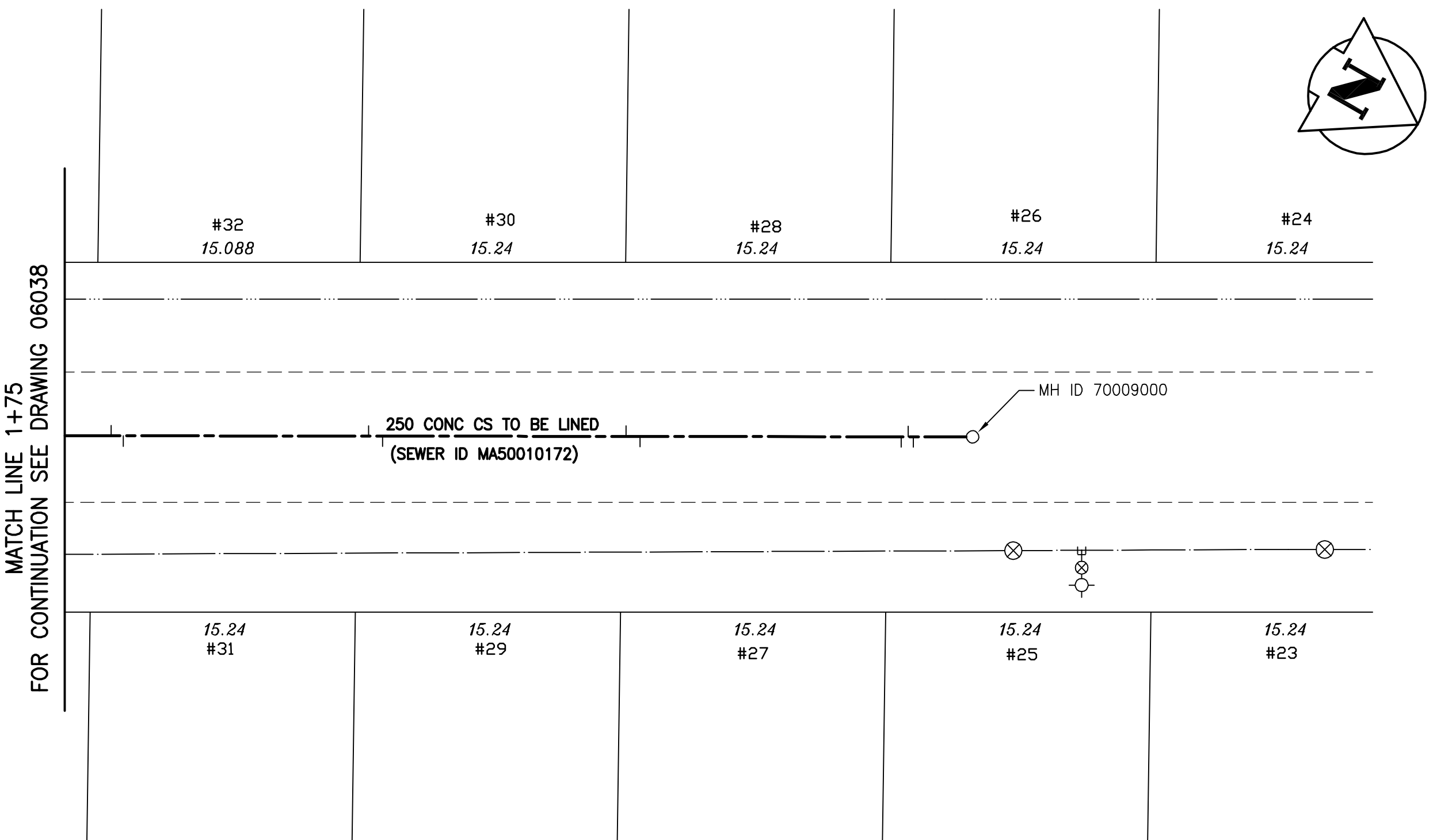


ST. ANDREW ROAD



SEWER JUNCTION INFORMATION (MA50010172)						
1ST MH NORTH OF HULL AVE. (MHID 70009000) TO MH AT HULL AVENUE (MHID 50008308)						
DISTANCE FROM 1ST MH NORTH OF HULL AVENUE (MH 70009000) *						
3.4	SOUTH	150 MM DIA.	EAST	JN	LIVE	
3.7	SOUTH	150 MM DIA.	WEST	CNI	LIVE	
4.1	SOUTH	150 MM DIA.	WEST	JN	CAPPED	
19.1	SOUTH	150 MM DIA.	EAST	JN	LIVE	
19.9	SOUTH	150 MM DIA.	WEST	JN	LIVE	
33.9	SOUTH	150 MM DIA.	EAST	JN	LIVE	
34.7	SOUTH	150 MM DIA.	WEST	JN	LIVE	
48.8	SOUTH	150 MM DIA.	EAST	JN	LIVE	
49.5	SOUTH	150 MM DIA.	WEST	JN	LIVE	

* Information from Sewer Video Inspection

SEWER SERVICE INFORMATION		
ADDRESS	SIZE	PROPERTY LINE LOCATION
23 ST. ANDREW RD RESIDENTIAL	150 mm	NO INFO AVAILABLE
24 ST. ANDREW RD RESIDENTIAL	150 mm	NO INFO AVAILABLE
25 ST. ANDREW RD RESIDENTIAL	150 mm	NO INFO AVAILABLE
26 ST. ANDREW RD RESIDENTIAL	150 mm	NO INFO AVAILABLE
27 ST. ANDREW RD RESIDENTIAL	150 mm	NO INFO AVAILABLE
28 ST. ANDREW RD RESIDENTIAL	150 mm	NO INFO AVAILABLE
29 ST. ANDREW RD RESIDENTIAL	150 mm	1.2 m S of S HL
30 ST. ANDREW RD RESIDENTIAL	150 mm	0.8 m N of S HL
31 ST. ANDREW RD RESIDENTIAL	150 mm	3.4 m S of S HL
32 ST. ANDREW RD RESIDENTIAL	150 mm	NO INFO AVAILABLE

WARNING
 IF POWER EQUIPMENT OR EXPLOSIVES ARE TO BE USED FOR EXCAVATION ON THIS PROJECT THE CONTRACTOR MUST:
 1) NOTIFY THE GAS COMPANY OF THE PROPOSED LOCATION OF EXCAVATION.
 2) TAKE PRECAUTION TO AVOID DAMAGE TO GAS COMPANY INSTALLATIONS.
 SEE PROVINCIAL REGULATION 140/92 FOR DETAILS

METRIC
 WHOLE NUMBERS INDICATE MILLIMETRES
 DECIMALIZED NUMBERS INDICATE METRES

NOTE:
 STATIONS ALONG W. R. OF ST. ANDREW RD.

BENCH MARK: 84R735 - N.E. Cor. of Hull Ave. & St. George Rd., Tblt. on top of 0.05 m dia. x 2.4 m iron pipe, 4.3 m S. of N.L. of Hull Ave. & 0.3 m W. of E.L. of St. George Rd.

BID OPPORTUNITY 449-2007



150 WM	WATERMAIN	150 WM	HYDRO	150 WM	WATERMAIN	150 WM	HYDRO
⊕	HYDRANT	⊕	M.T.S.	⊕	HYDRANT, VALVE	⊕	M.T.S.
⊙	VALVE	⊙	CONCRETE	⊙	LAND DRAINAGE SEWER	⊙	CONCRETE
---	LAND DRAINAGE SEWER	---	ASPHALT	---	WASTE WATER SEWER	---	ASPHALT
---	WASTE WATER SEWER	---	SIDEWALK	---	PROPERTY LINE	---	SIDEWALK
○	MANHOLE	○	PROPERTY LINE	○	NORTH OR WEST GUTTER	○	PROPERTY LINE
□	CATCH BASIN	□	SURVEY BAR	□	SOUTH OR EAST GUTTER	□	SURVEY BAR
▽	CURB INLET	▽	DITCH	▽	NORTH OR WEST DITCH	▽	DITCH
+	JUNCTIONS	+	ELEVATION	+	SOUTH OR EAST DITCH	+	ELEVATION
---	CULVERT	---	SIDEWALK RAMP	---	NORTH OR WEST DITCH	---	SIDEWALK RAMP
---	GAS	---	EXISTING	---	SOUTH OR EAST DITCH	---	EXISTING
---	EXISTING	---	LEGEND-PLAN	---	LEGEND-PROFILE	---	LEGEND-PLAN
---	PROPOSED	---	PROPOSED	---	PROPOSED	---	PROPOSED

LOCATION APPROVED UNDERGROUND STRUCTURES
 SUPV. U/G STRUCTURES COMMITTEE DATE
 NOTE:
 LOCATION OF UNDERGROUND STRUCTURES AS SHOWN ARE BASED ON THE BEST INFORMATION AVAILABLE BUT NO GUARANTEE IS GIVEN THAT ALL EXISTING UTILITIES ARE SHOWN OR THAT THE GIVEN LOCATIONS ARE EXACT. CONFIRMATION OF EXISTENCE AND EXACT LOCATION OF ALL SERVICES MUST BE OBTAINED FROM THE INDIVIDUAL UTILITIES BEFORE PROCEEDING WITH CONSTRUCTION.

NO.	REVISIONS	DATE	BY

Stantec Consulting Ltd.
 905 Waverley Street, Winnipeg, Manitoba
 Tel 204-489-5900 Fax 204-453-9012

DESIGNED BY: J.K.H.	CHECKED BY: W.B.
DRAWN BY: J.K.H.	APPROVED BY: H.A.K.
HOR. SCALE: 1:250	RELEASED FOR CONSTRUCTION:
VERTICAL: 1:50	DATE: 07.05.09

ENGINEER'S SEAL
 ORIGINAL SEALED BY H.A. KATZ P. ENG. 07.07.17
 CONSULTANT DRAWING NO. C-215

THE CITY OF WINNIPEG
 WATER AND WASTE DEPARTMENT
 ENGINEERING DIVISION

ST. ANDREW ROAD
MH AT HULL AVE TO
1ST MH N OF HULL AVE
 STA 1+75 TO STA. 2+27
 2007 SEWER RENEWALS BY CIPP LINING

SHEET 15 OF 19
 CAD FILE DRAWING NUMBER 09720C-214685.dwg
 CITY DRAWING NUMBER 06039