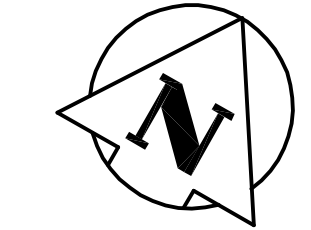


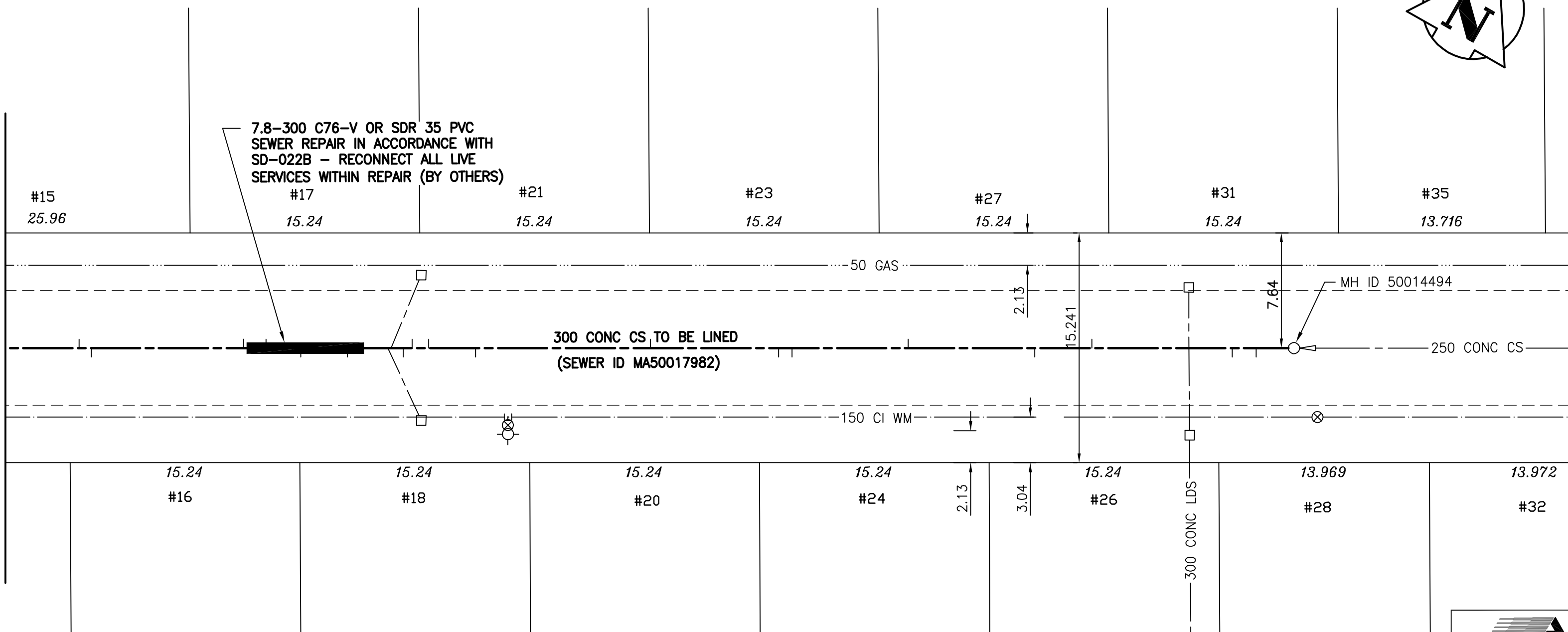
THORNDALE AVENUE



| SEWER JUNCTION INFORMATION (MA50017982) | | | | |
|--|------|-------------|-------|-----|
| 1ST MH EAST OF ST. MARY'S ROAD (MHID 50014494) TO MH AT ST. MARY'S (MHID 50009789) | | | | |
| DISTANCE FROM 1ST MH EAST OF ST. MARY'S ROAD (MH 50014494) * | | | | |
| 2.5 | WEST | 150 MM DIA. | SOUTH | CN |
| 4.1 | WEST | 150 MM DIA. | SOUTH | JN |
| 13.4 | WEST | 150 MM DIA. | NORTH | JN |
| 17.2 | WEST | 150 MM DIA. | SOUTH | JN |
| 25.6 | WEST | 150 MM DIA. | NORTH | JN |
| 33.3 | WEST | 150 MM DIA. | SOUTH | CN |
| 34.2 | WEST | 150 MM DIA. | SOUTH | JX |
| 42.7 | WEST | 150 MM DIA. | NORTH | CN |
| 54.3 | WEST | 150 MM DIA. | SOUTH | JN |
| 57.4 | WEST | 150 MM DIA. | NORTH | JN |
| 58.5 | WEST | 150 MM DIA. | NORTH | CNI |
| 59.1 | WEST | 150 MM DIA. | SOUTH | CNI |
| 62.8 | WEST | 150 MM DIA. | SOUTH | CXI |
| 65.9 | WEST | 150 MM DIA. | SOUTH | JX |
| 68.2 | WEST | 150 MM DIA. | NORTH | JX |
| 69.7 | WEST | 150 MM DIA. | NORTH | CX |
| 79.8 | WEST | 150 MM DIA. | SOUTH | JX |
| 80.6 | WEST | 150 MM DIA. | NORTH | JN |

* Information from Sewer Video Inspection

MATCH LINE 1+50 FOR CONTINUATION SEE DRAWING 06040



SEWER SERVICE INFORMATION

| ADDRESS | SIZE | PROPERTY LINE LOCATION |
|------------------------------|--------|------------------------|
| 15 THORNDALE AVE RESIDENTIAL | 150 mm | 3.2 m W of E HL |
| 16 THORNDALE AVE RESIDENTIAL | 150 mm | 0.3 m E of W HL |
| 17 THORNDALE AVE RESIDENTIAL | 150 mm | 1.7 m E of W HL |
| 18 THORNDALE AVE RESIDENTIAL | 150 mm | NO INFO AVAILABLE |
| 20 THORNDALE AVE RESIDENTIAL | 150 mm | NO INFO AVAILABLE |
| 21 THORNDALE AVE RESIDENTIAL | 150 mm | 1.7 m E of W HL |
| 23 THORNDALE AVE RESIDENTIAL | 150 mm | 0.3 m W of W HL |
| 24 THORNDALE AVE RESIDENTIAL | 150 mm | 0.8 m E of W HL |
| 26 THORNDALE AVE RESIDENTIAL | 150 mm | 2.4 m W of W HL |
| 27 THORNDALE AVE RESIDENTIAL | 150 mm | 1.4 m E of W HL |
| 28 THORNDALE AVE RESIDENTIAL | 150 mm | NO INFO AVAILABLE |
| 31 THORNDALE AVE RESIDENTIAL | 150 mm | 3.4 m E of W HL |

WARNING

IF POWER EQUIPMENT OR EXPLOSIVES ARE TO BE USED FOR EXCAVATION ON THIS PROJECT THE CONTRACTOR MUST:
 1) NOTIFY THE GAS COMPANY OF THE PROPOSED LOCATION OF EXCAVATION.
 2) TAKE PRECAUTION TO AVOID DAMAGE TO GAS COMPANY INSTALLATIONS.
 SEE PROVINCIAL REGULATION 140/92 FOR DETAILS

METRIC

WHOLE NUMBERS INDICATE MILLIMETRES
 DECIMALIZED NUMBERS INDICATE METRES

NOTE: STATIONS ALONG N P OF THORNDALE AVE.

BENCH MARK: 84R733 - N.E. Cor. of St. Mary's Rd. & Thorndale Ave., 1tbl. on top of 0.05 m dia. x 2.4 m iron pipe, 2.7 m S. of N.L. of Thorndale Ave. & on E.L. of St. Mary's Rd.

APEGM
 Certificate of Authorization
 Stantec Consulting Ltd.
 No. 1301 Expiry: April 30, 2008

BID OPPORTUNITY 449-2007

| 150 WM | WATERMAIN | 150 WM | HYDRO | 150 WM | WATERMAIN | 150 WM | HYDRO | 150 WM | WATERMAIN | 150 WM | HYDRO |
|--------|---------------------|--------|---------------|--------|----------------------|--------|---------------|--------|----------------------|--------|---------------|
| + | HYDRANT | + | M.T.S. | + | HYDRANT, VALVE | + | M.T.S. | + | HYDRANT, VALVE | + | M.T.S. |
| o | VALVE | o | CONCRETE | o | LAND DRAINAGE SEWER | o | CONCRETE | o | LAND DRAINAGE SEWER | o | CONCRETE |
| --- | LAND DRAINAGE SEWER | --- | ASPHALT | --- | WASTE WATER SEWER | --- | ASPHALT | --- | WASTE WATER SEWER | --- | ASPHALT |
| --- | WASTE WATER SEWER | --- | SIDEWALK | --- | PROFILE | --- | SIDEWALK | --- | PROFILE | --- | SIDEWALK |
| o | MANHOLE | o | PROPERTY LINE | o | NORTH OR WEST GUTTER | o | PROPERTY LINE | o | NORTH OR WEST GUTTER | o | PROPERTY LINE |
| □ | CATCH BASIN | □ | SURVEY BAR | □ | SOUTH OR EAST GUTTER | □ | SURVEY BAR | □ | SOUTH OR EAST GUTTER | □ | SURVEY BAR |
| ▽ | CURB INLET | ▽ | DITCH | ▽ | NORTH OR WEST P | ▽ | DITCH | ▽ | NORTH OR WEST P | ▽ | DITCH |
| + | JUNCTIONS | + | ELEVATION | + | SOUTH OR EAST P | + | ELEVATION | + | SOUTH OR EAST P | + | ELEVATION |
| --- | CULVERT | --- | SIDEWALK RAMP | --- | NORTH OR WEST DITCH | --- | SIDEWALK RAMP | --- | NORTH OR WEST DITCH | --- | SIDEWALK RAMP |
| --- | GAS | --- | SIDEWALK RAMP | --- | SOUTH OR EAST DITCH | --- | SIDEWALK RAMP | --- | SOUTH OR EAST DITCH | --- | SIDEWALK RAMP |
| --- | EXISTING | --- | LEGEND-PLAN | --- | LEGEND-PROFILE | --- | LEGEND-PLAN | --- | LEGEND-PROFILE | --- | LEGEND-PLAN |
| --- | PROPOSED | --- | EXISTING | --- | PROPOSED | --- | EXISTING | --- | PROPOSED | --- | EXISTING |

LOCATION APPROVED UNDERGROUND STRUCTURES

NOTE: LOCATION OF UNDERGROUND STRUCTURES AS SHOWN ARE BASED ON THE BEST INFORMATION AVAILABLE BUT NO GUARANTEE IS GIVEN THAT ALL EXISTING UTILITIES ARE SHOWN OR THAT THE GIVEN LOCATIONS ARE EXACT. CONFIRMATION OF EXISTENCE AND EXACT LOCATION OF ALL SERVICES MUST BE OBTAINED FROM THE INDIVIDUAL UTILITIES BEFORE PROCEEDING WITH CONSTRUCTION.

| NO. | REVISIONS | DATE | BY |
|-----|-----------|------|----|
| | | | |

Stantec Consulting Ltd.
 905 Waverley Street, Winnipeg, Manitoba
 Tel 204-489-5900 Fax 204-453-9012

DESIGNED BY: J.K.H. CHECKED BY: W.B.
 DRAWN BY: J.K.H. APPROVED BY: H.A.K.
 HOR. SCALE: 1:250
 VERTICAL: 1:50
 RELEASED FOR CONSTRUCTION: _____
 DATE: 07.05.09

ENGINEER'S SEAL
 ORIGINAL SEALED BY H.A. KATZ P. ENG. 07.07.17
 CONSULTANT DRAWING NO. C-217

THE CITY OF WINNIPEG
 WATER AND WASTE DEPARTMENT
 ENGINEERING DIVISION

THORNDALE AVENUE
 MH AT ST. MARY'S RD TO
 1ST MH E OF ST. MARY'S RD
 STA 1+50 TO STA. 2+36
 2007 SEWER RENEWALS BY CIPP LINING

SHEET 17 OF 19
 CAD FILE DRAWING NUMBER 09720C-216685.dwg
 CITY DRAWING NUMBER 06041