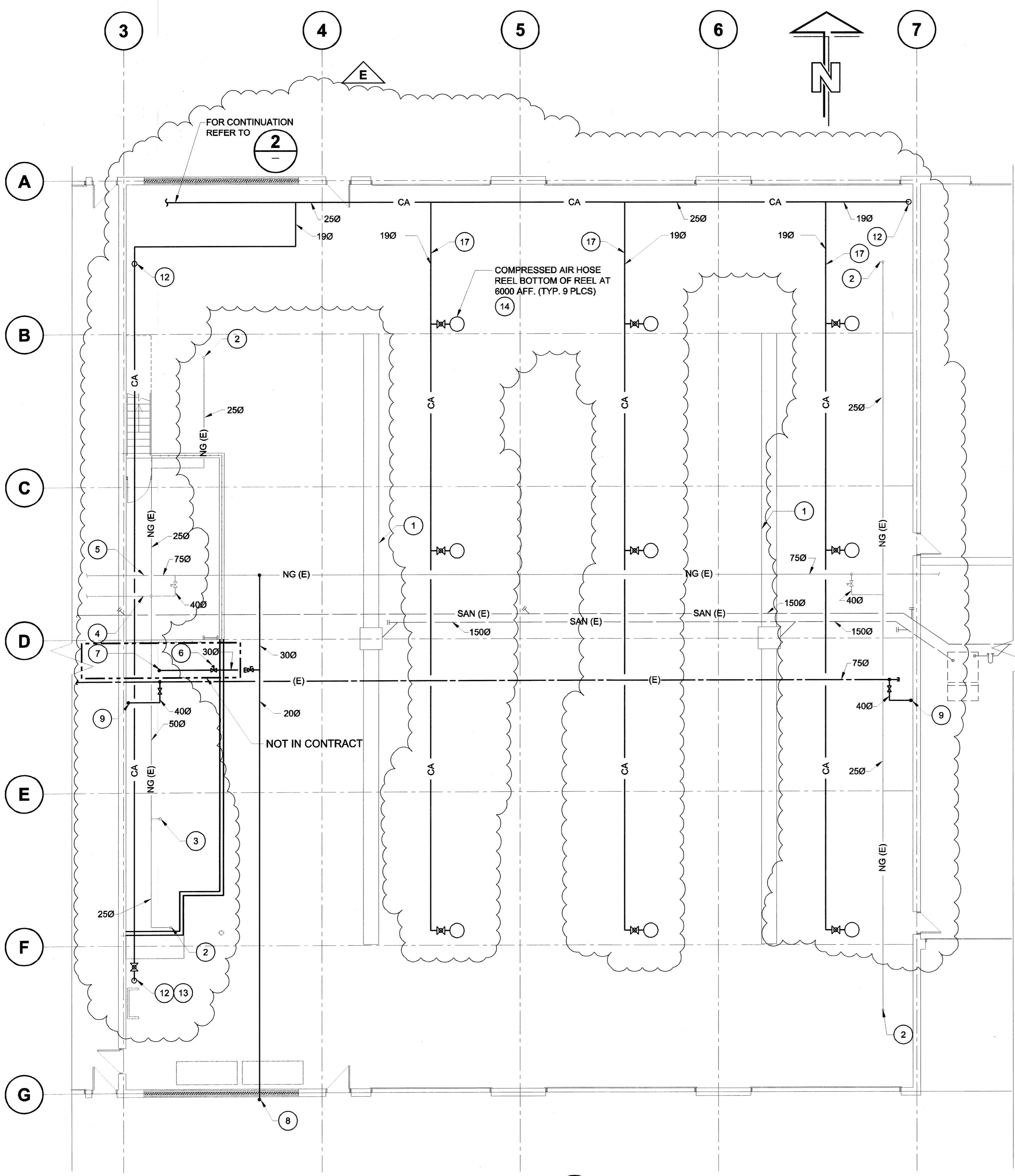
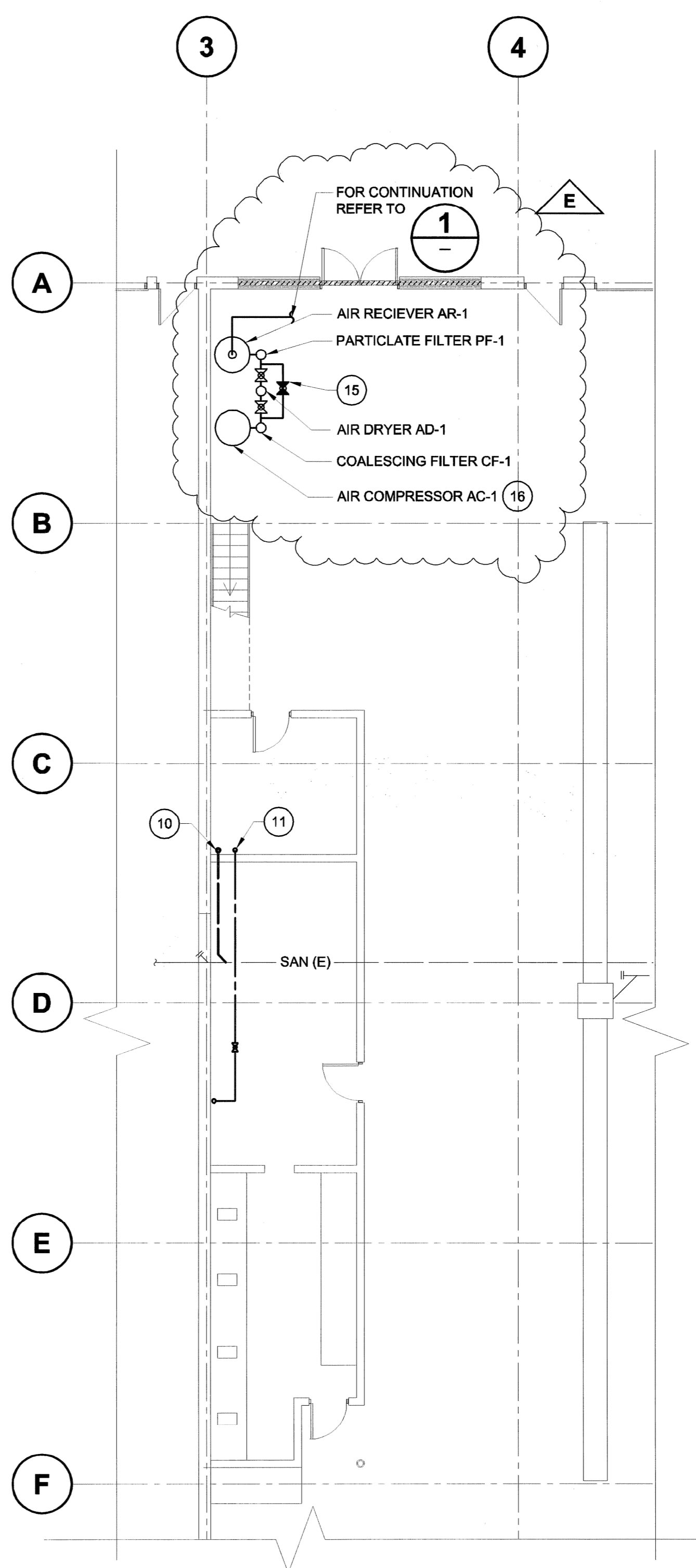


FILE NAME: 0265-395-02_01-14-07_005_RV.dwg
 DATE: 2007.06.05
 DESCRIPTION: DEMOLITION - MAIN FLOOR GARAGE
 PROJECT No.: 0265-395-02
 ADDRESS: 1539 Waverley Street, Winnipeg, MB.



PLAN 1
 SCALE 1:100
 GARAGE PLUMBING PLAN



PLAN 2
 SCALE 1:100
 GARAGE PLUMBING PART PLAN

- NOTES :
- EXISTING TRENCH DRAIN AND GRIT INTERCEPTOR.
 - EXISTING GAS SERVICE TO EXISTING UNIT HEATER. 150 MBH INPUT.
 - EXISTING GAS SERVICE TO EXISTING MAKE-UP AIR UNIT. 990 MBH INPUT.
 - EXISTING 300 GAS SERVICE TO TWO EXISTING UNIT HEATERS. 300 MBH INPUT TOTAL.
 - EXISTING 650 36 kPa GAS SERVICE TO REMAINDER OF FACILITY. 2500 MBH INPUT.
 - NEW GAS PRV SIZED FOR 3,208 MBH. GAS RELIEF TO BE VENTED UP THROUGH ROOF.
 - CONNECT 650 GAS SERVICE TO NEW MUA-1.
 - RUN NEW 200 GAS SERVICE DOWN TO NEW MUA-3. PROVIDE A NEW GAS PRV TO SERVICE THE NEW 400 MBH LOAD.
 - 400 DOMESTIC COLD WATER SERVICE DOWN TO HOSE VALVE AT LOW LEVEL.
 - PROVIDE NEW 1000 BURIED SANITARY SERVICE AND CONNECT INTO EXISTING 1500 SERVICE.
 - PROVIDE NEW 250 DOMESTIC COLD WATER SERVICE AND CONNECT INTO EXISTING 400 DOMESTIC COLD WATER.
 - 190 COMPRESSED AIR DROP WITH 190 BALL VALVE, TEE, QUICK DISCONNECT, DRIP LEG DRAIN VALVE AND CAP.
 - PROVIDE 0-207 kPa (0-30 PSIG) REGULATOR WITH PRESSURE GAUGE AND QUICK DISCONNECT.
 - EACH REEL TO BE INSTALLED WITH 23 METERS (75 FEET) OF HOSE AND QUICK DISCONNECT. USE FLEXIBLE CONNECTION BETWEEN PIPELINE AND REEL.
 - PROVIDE 250 DRYER BYPASS FOR OPERATION WHEN OUTSIDE TEMPERATURE IS ABOVE FREEZING.
 - SET COMPRESSOR REGULATOR TO 758 kPa (110 PSIG). START/STOP AT 620 kPa / 758 kPa (90 PSIG/110 PSIG).
 - LOCATE COMPRESSED AIR PIPING ADJACENT TO LIGHT FIXTURES AND ABOVE LEVEL OF OTHER EXISTING PIPING.
- DESIGN NOTES:
- COMPRESSED AIR FOR VEHICLE AIR BRAKE PRE-CHARGING. ESTIMATED VEHICLE RESERVOIR: ≤ 0.1 CU METER (3.6 CU. FT.) MIN. REQUIRED PRESSURE 550 kPa (80 PSIG).
 - ESTIMATED USAGE RATE: 0.48 SCM (17 SCF) / VEHICLE WITH 1 MINUTE FILLTIME. RESERVOIR SIZED FOR 207 kPa (30 PSIG) DROP WITH 32 1/2 (88 CFM) DRAW DOWN DURING ONE MINUTE.

UMA AECOM

© 2007 UMA ENGINEERING LTD. ALL RIGHTS RESERVED.

NO.	REVISION/DESCRIPTION	BY	DATE
E	ISSUED FOR ADDENDUM No. 1	ALS	07/11/14
D	ISSUED FOR TENDER	ALS	07/11/10
C	ISSUED FOR FINAL REVIEW	ALS	07/11/10
B	ISSUED FOR 100% REVIEW	ALS	07/09/12
A	ISSUED FOR CLIENT REVIEW	ALS	07/08/12

SEALS

DRAWN BY	R.P.	CHECKED BY	APPROVED
DATE	2007.05.09	USER APPROVAL	

CITY OF WINNIPEG
 PLANNING, PROPERTY &
 DEVELOPMENT DEPARTMENT
 CIVIC ACCOMMODATIONS DIVISION
 300 - 65 GARRY ST. R3C 4K4

PROJECT
 CONSTRUCTION OF OFFICE/GARAGE
 RENOVATIONS AND STORAGE BUILDING
 AT 1539 WAVERLEY STREET
 1539 Waverley Street, Winnipeg, MB.

SHEET TITLE
 MECHANICAL
 NEW CONSTRUCTION - PLUMBING
 MAIN FLOOR GARAGE

SCALE	PROJECT NO.	SHEET NO.
AS NOTED	0265-395-02	GAR - M1.1

DRAWING SHEET SIZE: A1 (841mm x 594mm) PLOT 1:1

AS	CC			
DRN	CHK	DES	ENG	IDR
UMA AECOM REVIEW				