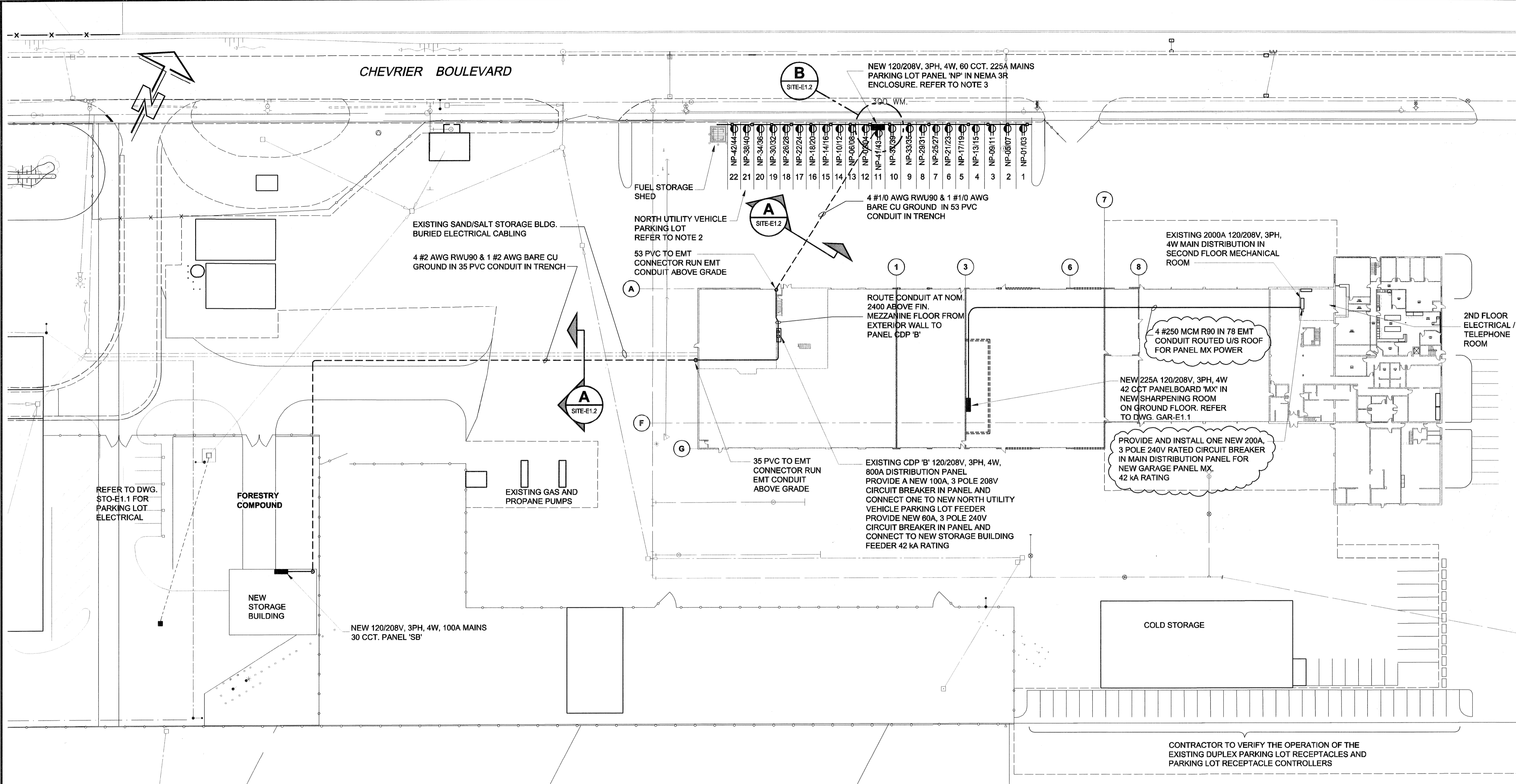
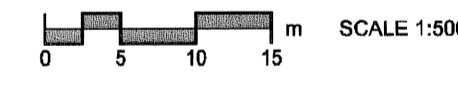


FILE NAME: E-0001.DWG
 DATE: YEAR.MM.DD
 DESCRIPTION: SITE PLAN
 PROJECT No: XXXX-XXX-XX
 ADDRESS: 1539 Waverley Street, Winnipeg, MB



- NOTES:
1. LOCATION OF UNDERGROUND STRUCTURES AS SHOWN ARE BASED ON THE BEST INFORMATION AVAILABLE. NO GUARANTEE IS GIVEN THAT ALL EXISTING UNDERGROUND STRUCTURES ARE SHOWN OR THAT THE GIVEN LOCATIONS ARE EXACT. CONFIRMATION OF EXISTING AND EXACT LOCATION OF ALL SERVICES MUST BE OBTAINED FROM THE INDIVIDUAL UTILITIES BEFORE PROCEEDING WITH CONSTRUCTION. ELECTRONICALLY SWEEP AREAS TO BE TRENCHED BEFORE EXCAVATING.
 2. PARKING SPACE TO ALLOW 2 "STACKED" VEHICLES PER STALL.
 3. FOR BRANCH CIRCUITS ALL CONDUIT TO INCLUDE MIN. #12 AWG INSULATED GROUND FROM PANEL GROUND BUS TO GROUND LUG OF EACH WIRING DEVICE.

SITE PLAN



LEGEND

- | | | | | | |
|-------|---|---|---------------------------------|----|----------------------------|
| — | SURFACE MOUNTED CONDUIT | ⊕ | SINGLE RECEPTACLE | C | MOUNTED ABOVE COUNTER |
| - - - | CONDUIT IN TRENCH | ⊕ | SPLIT FED DUPLEX RECEPTACLE | D | DEMOLISH |
| □ | DISTRIBUTION PANEL | ⊕ | HARD WIRE CONNECTION | E | EXISTING TO REMAIN |
| ⬭ | FLUORESCENT LUMINAIRE, TYPE 1 | ⊕ | MAGNETIC STARTER | ER | EXISTING REUSED/RE-FED |
| ⊙ | CEILING MOUNTED LUMINAIRE, TYPE 1 | ⊕ | MOTOR AND DISCONNECT SWITCH | NL | NON-SWITCHED NIGHT LIGHT |
| ⊙ | WALL MOUNTED LUMINAIRE, TYPE 1 | ⊕ | DISCONNECT SWITCH | R | RELOCATED LOCATION OF ITEM |
| EXIT | EXIT SIGN | ⊕ | PULL STATION | WP | WEATHER PROOF |
| ⊕ | SINGLE EMERGENCY LIGHTING HEAD | ⊕ | HORN | | |
| ⊕ | DOUBLE EMERGENCY LIGHTING HEADS | ⊕ | BELL | | |
| ⊕ | DOUBLE EMERGENCY LIGHTING HEADS WITH BATTERY BANK | ⊕ | SMOKE DETECTOR | | |
| ⊕ | LIGHTING SWITCH LINE VOLTAGE | ⊕ | HEAT DETECTOR | | |
| 3 | THREE WAY | ⊕ | END OF LINE RESISTOR | | |
| T | TOGGLE LIT IN OFF POSITION | ⊕ | DUCT SMOKE DETECTOR | | |
| ⊕ | PHOTOCELL | ⊕ | FIXED TEMPERATURE HEAT DETECTOR | | |
| ⊕ | DUPLEX RECEPTACLE | ⊕ | RATE OF RISE HEAT DETECTOR | | |
| ⊕ | GFI: GROUND FAULT INTERRUPT | ⊕ | DATA OUTLET | | |
| ⊕ | NEW POWER POLE | ⊕ | VOICE OUTLET | | |
| | | ⊕ | VOICE/DATA COMBINATION OUTLET | | |

E	ISSUED FOR ADDENDUM No.1	SCK	07/17/14
D	ISSUED FOR TENDER	SCK	07/11/10
C	ISSUED FOR FINAL REVIEW	SCK	07/18/10
B	ISSUED FOR 100% REVIEW	SCK	07/08/12
A	ISSUED FOR CLIENT REVIEW	QL	07/08/11
NO.	REVISION/DESCRIPTION	BY	DATE

SEALS

DRAWN BY	SCK	CHECKED BY	APPROVED
DATE	2007.05.08	USER APPROVAL	

CITY OF WINNIPEG
 PLANNING, PROPERTY &
 DEVELOPMENT DEPARTMENT
 CIVIC ACCOMMODATIONS DIVISION
 300 - 65 GARRY ST. R3C 4K4

PROJECT
 CONSTRUCTION OF OFFICE/GARAGE
 RENOVATIONS & STORAGE BUILDING
 AT 1539 WAVERLEY STREET
 1539 Waverley Street, Winnipeg, MB.

SHEET TITLE
 ELECTRICAL
 SITE PLAN - STORAGE BUILDING
 PARKING LOT RECEPTACLES

SCALE 1:500 PROJECT NO. 0265-395-02 SHEET NO. SITE-E1.1

DRN	CHK	DES	ENG	IDR

UMA REVIEW