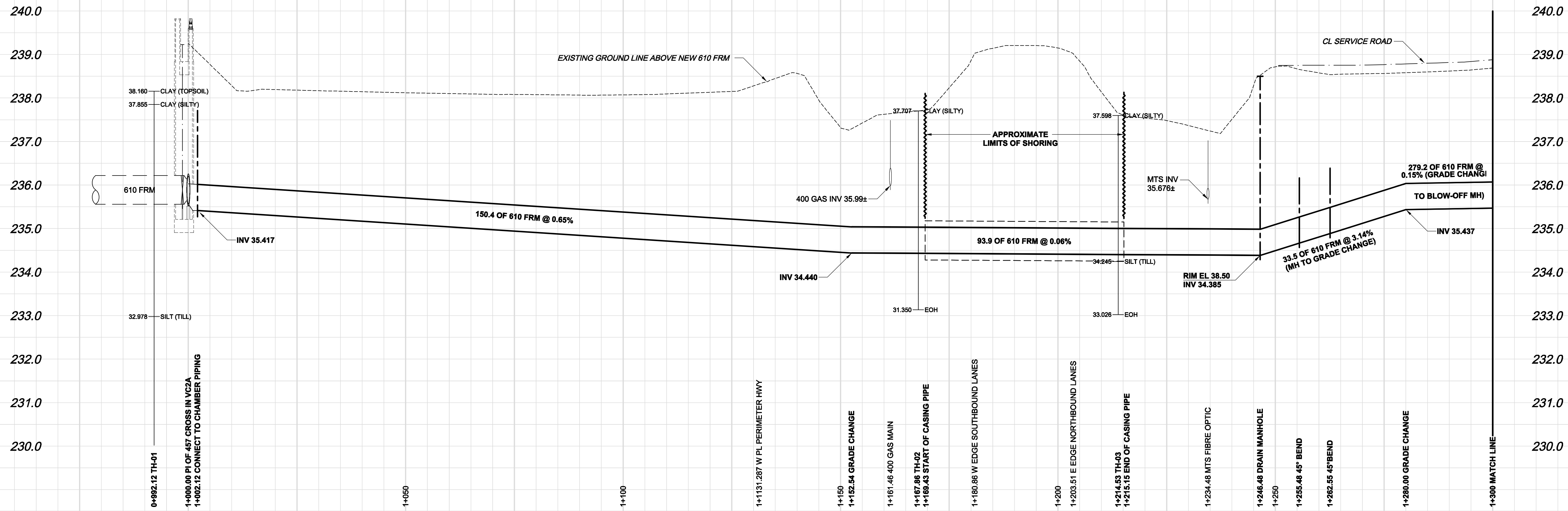


D SIZE 22" x 34" (559mm x 864mm)

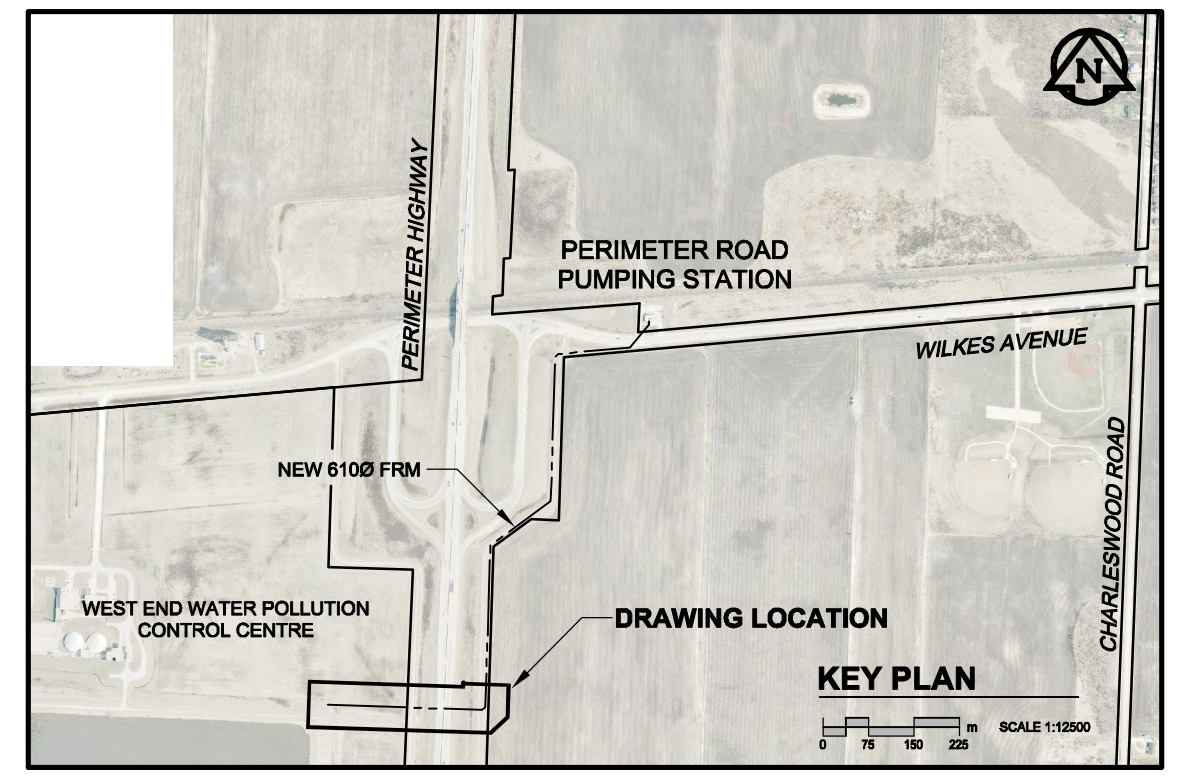
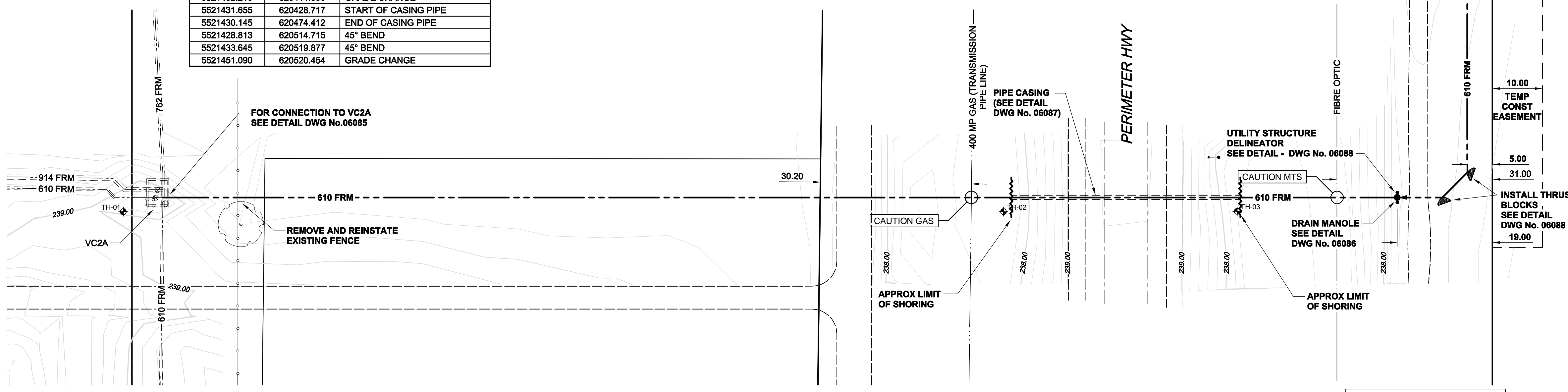
PLOT: 07/07/06 2:24:13 PM

UMA AECOM REVIEW DRAFT CHK KMB
UMA FILE NAME: D265-202-01_01-C-1001_RX.dwg Saved By: lbrard



CHAINAGE ALONG ϵ 610 FRM

NORTHING	EASTING	DESCRIPTION
5521437.252	620259.379	PI OF 457 CROSS IN VC2A
5521437.182	620261.498	CONNECT TO CHAMBER PIPING
5521432.213	620411.836	GRADE CHANGE
5521431.655	620428.717	START OF CASING PIPE
5521430.145	620474.412	END OF CASING PIPE
5521428.813	620514.715	45° BEND
5521433.645	620519.877	45° BEND
5521451.090	620520.454	GRADE CHANGE



WARNING
IF POWER EQUIPMENT OR EXPLOSIVES ARE TO BE USED FOR EXCAVATION ON THIS PROJECT, THE CONTRACTOR MUST:
1) NOTIFY THE GAS COMPANY OF THE PROPOSED LOCATION OF EXCAVATION.
2) TAKE PRECAUTION TO AVOID DAMAGE TO GAS COMPANY INSTALLATIONS.
SEE PROVINCIAL REGULATION 140/92 FOR DETAILS

EXISTING	LEGEND - PLAN	NEW	EXISTING	LEGEND - PLAN	NEW	EXISTING	LEGEND - PROFILE	NEW	EXISTING	LEGEND - PROFILE	NEW
150 WM	WATERMAIN	150 WM	150 WM	WATERMAIN	150 WM	150 WM	WATERMAIN	150 WM	150 WM	WATERMAIN	150 WM
300 LDS	LAND DRAINAGE SEWER	300 LDS	300 LDS	LAND DRAINAGE SEWER	300 LDS	300 LDS	LAND DRAINAGE SEWER	300 LDS	300 LDS	LAND DRAINAGE SEWER	300 LDS
250 WWS	WASTE WATER SEWER	250 WWS	250 WWS	WASTE WATER SEWER	250 WWS	250 WWS	WASTE WATER SEWER	250 WWS	250 WWS	WASTE WATER SEWER	250 WWS
○	MANHOLE	●	○	MANHOLE	●	○	MANHOLE	●	○	MANHOLE	●
□	CATCH BASIN	■	□	CATCH BASIN	■	□	CATCH BASIN	■	□	CATCH BASIN	■
△	CURB INLET	▲	△	CURB INLET	▲	△	CURB INLET	▲	△	CURB INLET	▲
▭	CULVERT	▭	▭	CULVERT	▭	▭	CULVERT	▭	▭	CULVERT	▭
—	PIPE ABANDONMENTS	—	—	PIPE ABANDONMENTS	—	—	PIPE ABANDONMENTS	—	—	PIPE ABANDONMENTS	—
+	SURVEY BAR	+	+	SURVEY BAR	+	+	SURVEY BAR	+	+	SURVEY BAR	+
—	LEGEND - PLAN	—	—	LEGEND - PLAN	—	—	LEGEND - PLAN	—	—	LEGEND - PLAN	—
—	LEGEND - PROFILE	—	—	LEGEND - PROFILE	—	—	LEGEND - PROFILE	—	—	LEGEND - PROFILE	—

LOCATION APPROVED
UNDERGROUND STRUCTURES
SUPR. U/G STRUCTURES DATE COMMITTEE
NOTE:
LOCATION OF UNDERGROUND STRUCTURES AS SHOWN ARE BASED ON THE BEST INFORMATION AVAILABLE, BUT NO GUARANTEE IS GIVEN THAT ALL EXISTING UTILITIES ARE SHOWN OR THAT THE GIVEN LOCATIONS ARE EXACT. CONFIRMATION OF EXISTENCE AND EXACT LOCATION OF ALL SERVICES MUST BE OBTAINED FROM THE INDIVIDUAL UTILITIES BEFORE PROCEEDING WITH CONSTRUCTION.

NO.	ISSUED FOR CONSTRUCTION	DATE	BY
0	ISSUED FOR CONSTRUCTION	07/07/06	KMB
	REVISIONS	YYMMDD	BY

DESIGNED BY	EDT	CHECKED BY	MGM
DRAWN BY	ADL	APPROVED BY	CCM
HOR. SCALE	1:500	RELEASED FOR CONSTRUCTION	C. Carroll
VERT. SCALE	1:50	DATE	July 6/07
DATE	2007/07/06	DATE	July 6/07

PROFESSIONAL'S SEAL
ORIGINAL SEALED BY:
E.D.J. TOUPIN
July 6, 2007
CONSULTANT DRAWING NO. 01
D265-202-01

UMA AECOM
© 2006 UMA ENGINEERING LTD. ALL RIGHTS RESERVED.

THE CITY OF WINNIPEG
WATER AND WASTE DEPARTMENT
PERIMETER ROAD PUMPING STATION UPGRADES
CONTRACT A
FORCEMAIN TWINNING

SHEET 1 OF 8
CITY DRAWING NUMBER
06081
REV 0

BID OPPORTUNITY NO. 481-2007
VC2A
TO MATCHLINE 1+300