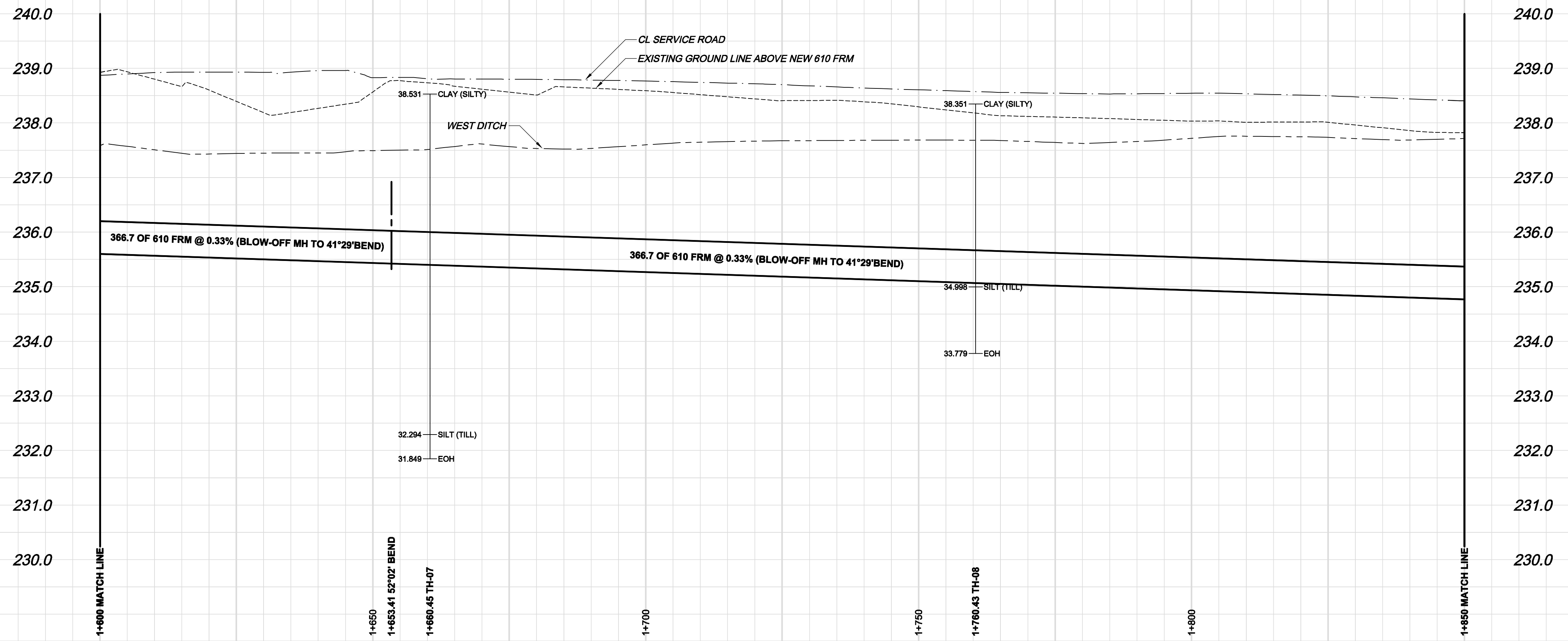


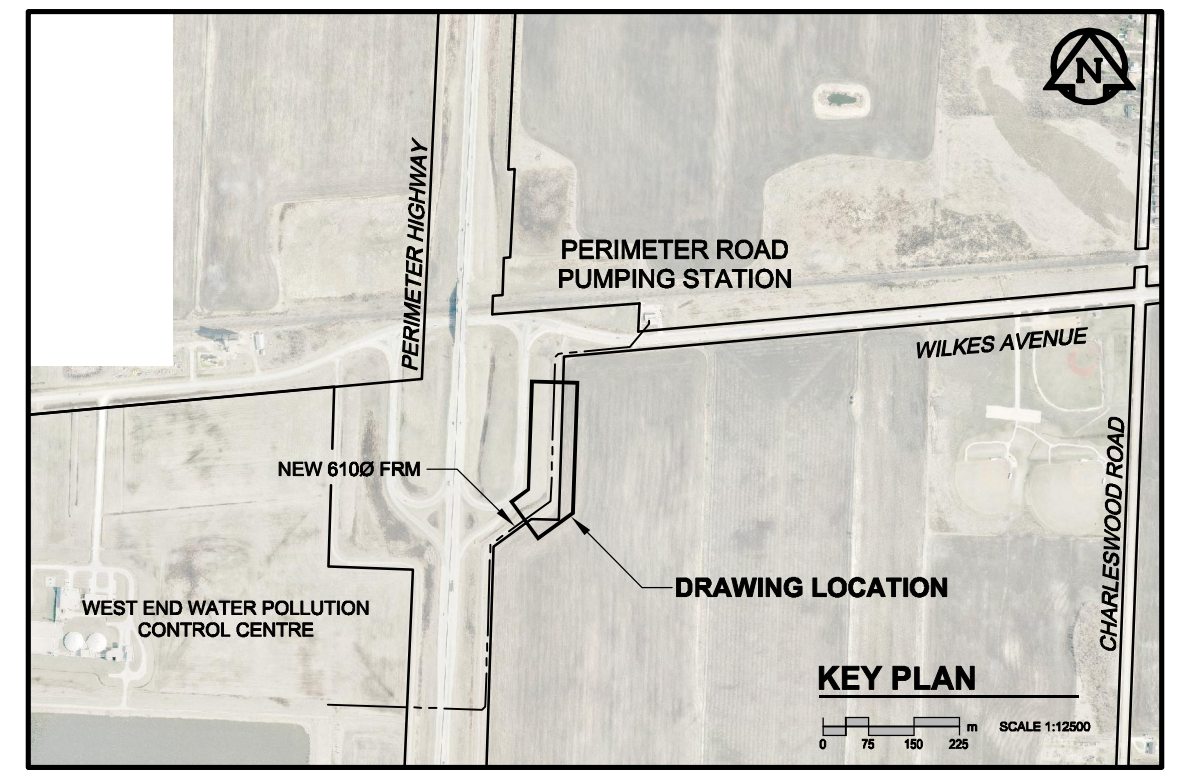
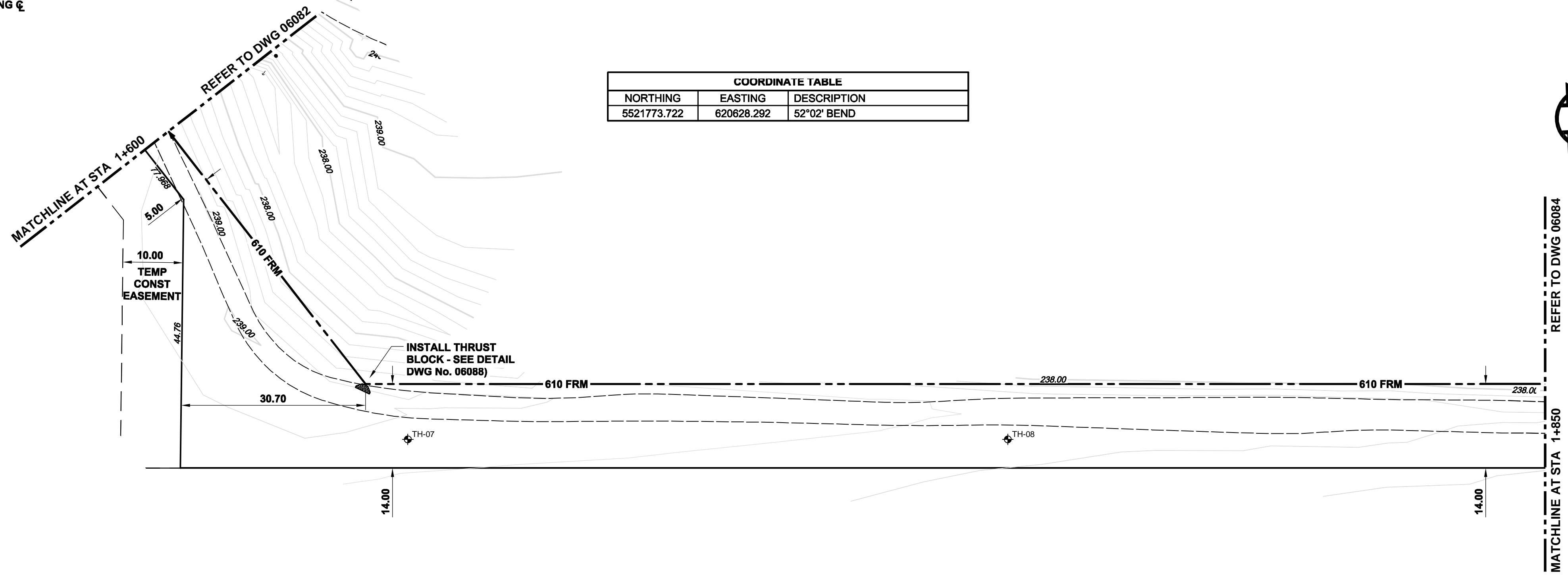
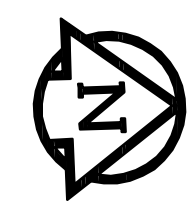
D SIZE 22" x 34" (559mm x 864mm)

PLOT: 07/07/06 2:29:46 PM

UMA/AECOM REVIEW DRAFT CHK KMB  
UMA FILE NAME: D265-202-01\_01-CC-1003\_PX.dwg Saved By: lberard



COORDINATE TABLE		
NORTHING	EASTING	DESCRIPTION
5521773.722	620628.292	52°02' BEND



**WARNING**  
IF POWER EQUIPMENT OR EXPLOSIVES ARE TO BE USED FOR EXCAVATION ON THIS PROJECT, THE CONTRACTOR MUST:  
1) NOTIFY THE GAS COMPANY OF THE PROPOSED LOCATION OF EXCAVATION.  
2) TAKE PRECAUTION TO AVOID DAMAGE TO GAS COMPANY INSTALLATIONS.  
SEE PROVINCIAL REGULATION 140/92 FOR DETAILS

**APEGM**  
Certificate of Authorization  
UMA Engineering Ltd. (MB)  
No. 256 Date: July 6, 2007

**METRIC**  
WHOLE NUMBERS INDICATE MILLIMETRES  
DECIMALIZED NUMBERS INDICATE METRES

BID OPPORTUNITY NO. 481-2007

EXISTING	LEGEND - PLAN	NEW	EXISTING	LEGEND - PLAN	NEW	EXISTING	LEGEND - PROFILE	NEW
150 WM	WATERMAIN	150 WM	150 WM	WATERMAIN	150 WM	150 WM	WATERMAIN	150 WM
300 LDS	LAND DRAINAGE SEWER	300 LDS	300 LDS	LAND DRAINAGE SEWER	300 LDS	300 LDS	LAND DRAINAGE SEWER	300 LDS
250 WWS	WASTE WATER SEWER	250 WWS	250 WWS	WASTE WATER SEWER	250 WWS	250 WWS	WASTE WATER SEWER	250 WWS
○	MANHOLE	●	○	MANHOLE	●	○	MANHOLE	●
□	CATCH BASIN	■	□	CATCH BASIN	■	□	CATCH BASIN	■
△	CURB INLET	▲	△	CURB INLET	▲	△	CURB INLET	▲
▭	CULVERT	▭	▭	CULVERT	▭	▭	CULVERT	▭
—	PIPE ABANDONMENTS	—	—	PIPE ABANDONMENTS	—	—	PIPE ABANDONMENTS	—
+	SURVEY BAR	+	+	SURVEY BAR	+	+	SURVEY BAR	+
○	HYDRANT	○	○	HYDRANT	○	○	HYDRANT	○
+	VALVE	+	+	VALVE	+	+	VALVE	+
—	REDUCER	—	—	REDUCER	—	—	REDUCER	—
—	COUPLING	—	—	COUPLING	—	—	COUPLING	—
○	ANODE	○	○	ANODE	○	○	ANODE	○
○	HYDRO	○	○	HYDRO	○	○	HYDRO	○
—	MTS	—	—	MTS	—	—	MTS	—
—	GAS	—	—	GAS	—	—	GAS	—
—	TESTHOLE	—	—	TESTHOLE	—	—	TESTHOLE	—
—	LAMP STANDARD	—	—	LAMP STANDARD	—	—	LAMP STANDARD	—
—	TREE	—	—	TREE	—	—	TREE	—

**LOCATION APPROVED**  
UNDERGROUND STRUCTURES  
SUPR. U/G STRUCTURES DATE COMMITTEE  
**NOTE:**  
LOCATION OF UNDERGROUND STRUCTURES AS SHOWN ARE BASED ON THE BEST INFORMATION AVAILABLE, BUT NO GUARANTEE IS GIVEN THAT ALL EXISTING UTILITIES ARE SHOWN OR THAT THE GIVEN LOCATIONS ARE EXACT. CONFIRMATION OF EXISTENCE AND EXACT LOCATION OF ALL SERVICES MUST BE OBTAINED FROM THE INDIVIDUAL UTILITIES BEFORE PROCEEDING WITH CONSTRUCTION.

NO.	REVISIONS	YYMMDD	BY
0	ISSUED FOR CONSTRUCTION	07/06/22	WJd

DESIGNED BY	EDT	CHECKED BY	MGM
DRAWN BY	ADL	APPROVED BY	CCM
HOR. SCALE	AS NOTED	RELEASED FOR CONSTRUCTION	C. Carroll
VERT. SCALE	N/A	DATE	July 6/07
DATE	2007/07/06	CONSULTANT DRAWING NO.	03

PROFESSIONAL'S SEAL  
*ORIGINAL SEALED BY:*  
E.D.J. TOUPIN  
July 6, 2007  
D265-202-01

**THE CITY OF WINNIPEG**  
**WATER AND WASTE DEPARTMENT**  
**PERIMETER ROAD PUMPING STATION UPGRADES**  
**CONTRACT A**  
**FORCEMAIN TWINNING**

Winnipeg

MATCHLINE 1+600  
TO MATCHLINE 1+850

SHEET 3 OF 8  
CITY DRAWING NUMBER  
**06083**  
REV 0