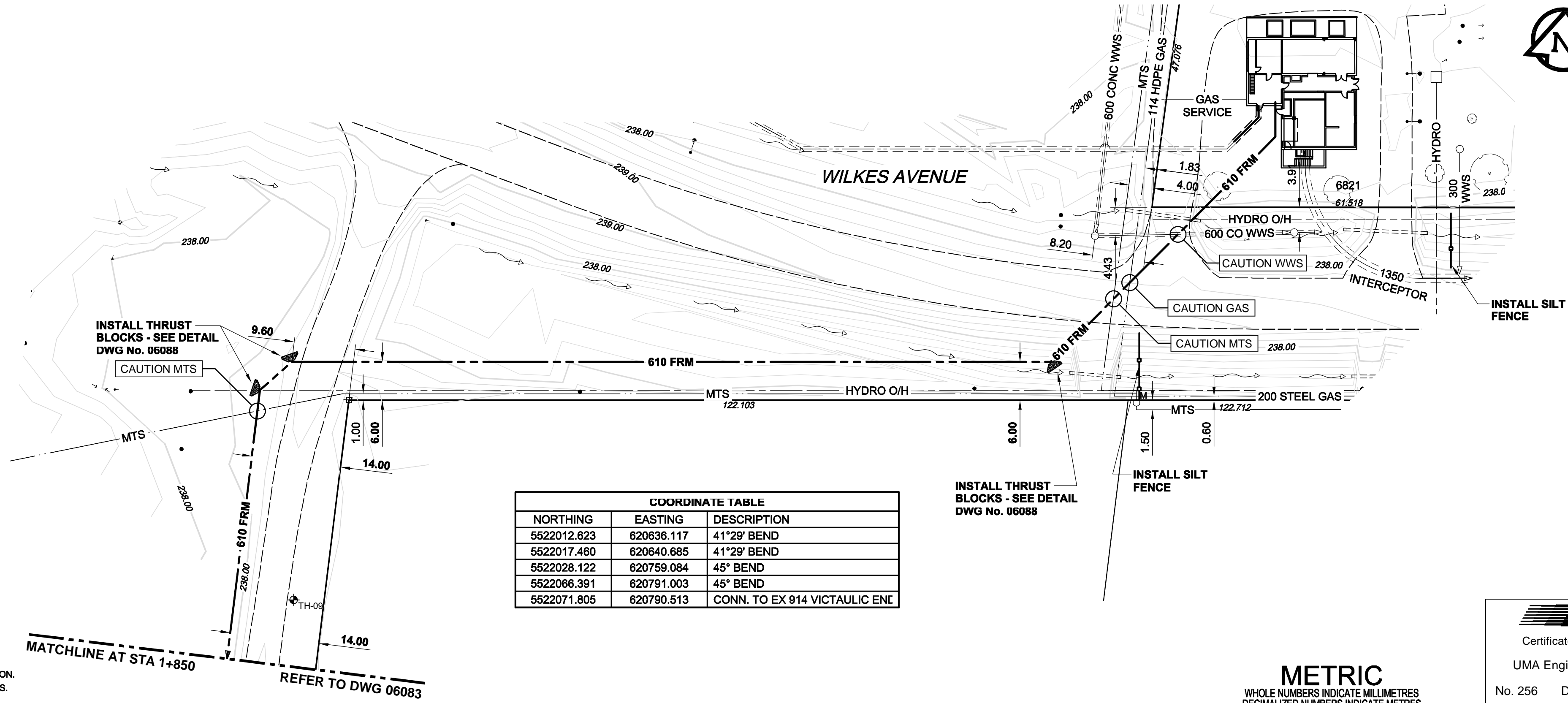


CHAINAGE ALONG & 610 FRM



COORDINATE TABLE		
NORTHING	EASTING	DESCRIPTION
5522012.623	620636.117	41°29' BEND
5522017.460	620640.685	41°29' BEND
5522028.122	620759.084	45° BEND
5522066.391	620791.003	45° BEND
5522071.805	620790.513	CONN. TO EX 914 VICTAULIC ENI

WARNING
 IF POWER EQUIPMENT OR EXPLOSIVES ARE TO BE USED FOR EXCAVATION ON THIS PROJECT, THE CONTRACTOR MUST:
 1) NOTIFY THE GAS COMPANY OF THE PROPOSED LOCATION OF EXCAVATION.
 2) TAKE PRECAUTION TO AVOID DAMAGE TO GAS COMPANY INSTALLATIONS.
 SEE PROVINCIAL REGULATION 140/92 FOR DETAILS

MATCHLINE AT STA 1+850
 REFER TO DWG 06083

EXISTING	LEGEND - PLAN	NEW	EXISTING	LEGEND - PROFILE	NEW	EXISTING	LEGEND - PROFILE	NEW
150 WM	WATERMAIN	150 WM	150 WM	WATERMAIN	150 WM	300 LDS	LAND DRAINAGE SEWER	300 LDS
300 LDS	LAND DRAINAGE SEWER	300 LDS	250 WWS	WASTE WATER SEWER	250 WWS	MANHOLE	CATCH BASIN	CURB INLET
250 WWS	WASTE WATER SEWER	250 WWS	MANHOLE	CATCH BASIN	CURB INLET	CULVERT	PIPE ABANDONMENTS	SURVEY BAR
150 WM	HYDRANT VALVE	150 WM	150 WM	HYDRANT VALVE	150 WM	150 WM	HYDRANT VALVE	150 WM
150 WM	REDUCER COUPLING	150 WM	150 WM	ANODE	HYDRO	MTS	GAS	TESTHOLE
150 WM	ANODE	HYDRO	MTS	GAS	TESTHOLE	LAMP STANDARD	TREE	
150 WM	PAVEMENT CROWN	N/W PROPERTY LINE	S/E PROPERTY LINE	N/W GUTTER	S/E GUTTER			

LOCATION APPROVED
 UNDERGROUND STRUCTURES
 SUPR. U/G STRUCTURES DATE COMMITTEE
 NOTE:
 LOCATION OF UNDERGROUND STRUCTURES AS SHOWN ARE BASED ON THE BEST INFORMATION AVAILABLE. BUT NO GUARANTEE IS GIVEN THAT ALL EXISTING UTILITIES ARE SHOWN OR THAT THE GIVEN LOCATIONS ARE EXACT. CONFIRMATION OF EXISTENCE AND EXACT LOCATION OF ALL SERVICES MUST BE OBTAINED FROM THE INDIVIDUAL UTILITIES BEFORE PROCEEDING WITH CONSTRUCTION.

NO.	ISSUED FOR CONSTRUCTION	DATE	BY
0	ISSUED FOR CONSTRUCTION	07/06/22	WJd
	REVISIONS	YYMMDD	

DESIGNED BY	EDT	CHECKED BY	MGM
DRAWN BY	ADL	APPROVED BY	CCM
HOR. SCALE	AS NOTED	RELEASED FOR CONSTRUCTION	C. Carroll
VERT. SCALE	N/A	DATE	July 6/07
DATE	2007/07/06		

APEN
 Certificate of Authorization
 UMA Engineering Ltd. (MB)
 No. 256 Date: July 6, 2007

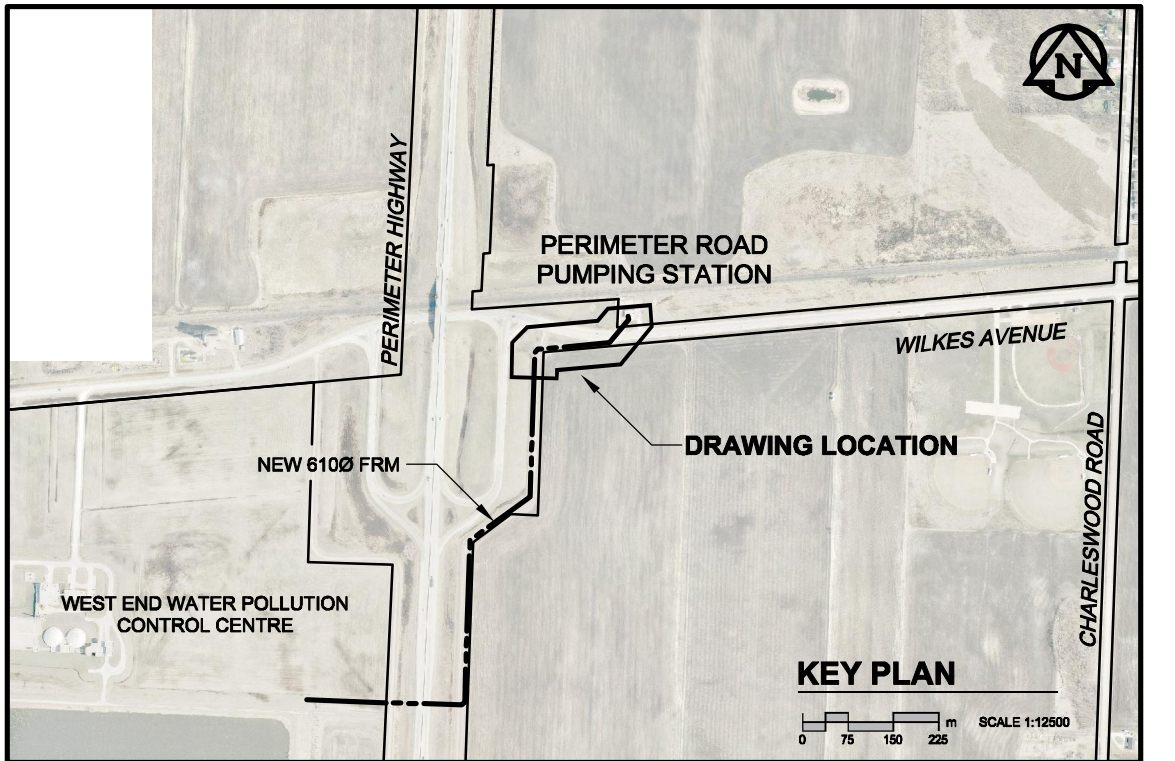
THE CITY OF WINNIPEG
WATER AND WASTE DEPARTMENT
PERIMETER ROAD PUMPING STATION UPGRADES CONTRACT A
FORCEMAIN TWINNING

PROFESSIONAL'S SEAL
 ORIGINAL SEALED BY:
 E.D.J. TOUPIN
 July 6, 2007

CONSULTANT DRAWING NO. 04
 D265-202-01

MATCHLINE 1+850
 TO PERIMETER ROAD PUMPING STATION

SHEET 4 OF 8
 CITY DRAWING NUMBER
06084
 REV 0



BID OPPORTUNITY NO. 481-2007