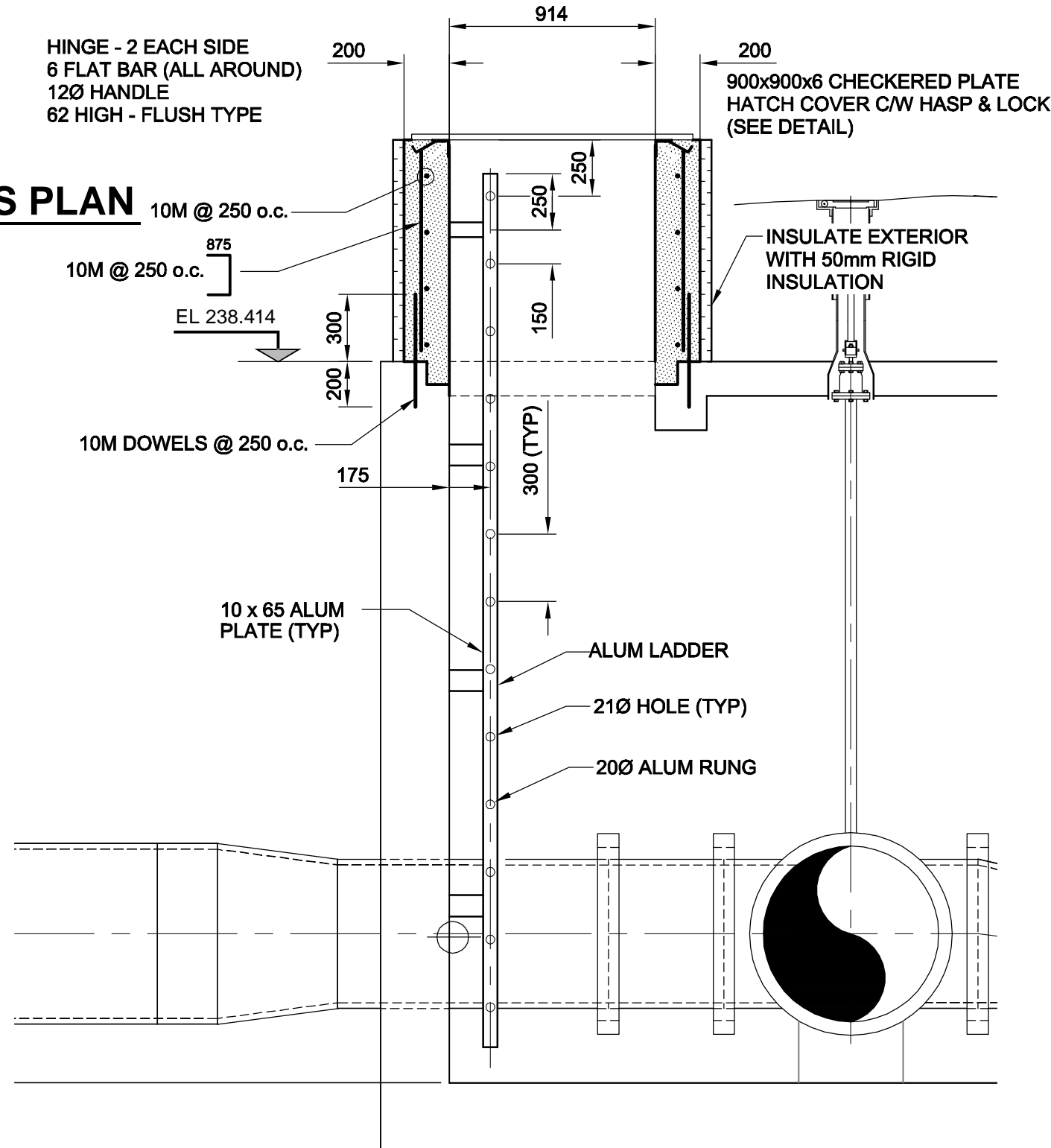


VALVE CHAMBER VC2A REMOVALS PLAN

SCALE 1:25
 0 0.25 0.5 0.75 m

ITEM	DESCRIPTION	NUMBER	LENGTH	SPECIALS	
1	610 D CONCRETE COATED STEEL SPOOL VIC44 x VIC44	1	513		REMOVE AND SALVAGE
2	610 x 610 x 610 CONCRETE COATED STEEL TEE VIC44 x VIC44 x VIC44	1	1128 x 723		TO REMAIN - RECOAT
3	610 MCAVITY GATE VALVE VIC44 x VIC44	1	515		TO REMAIN - RECOAT
4	610 JENKINS CHECK VALVE VIC44 x VIC44	1	980		TO REMAIN - RECOAT AND REMOVE FLAP
5	610 x 457 CONCRETE COATED STEEL ECCENTRIC REDUCER VIC44 x FL	1	542		TO REMAIN
6	457 DEZURIK WAFFER KNIFE GATE VALVE	1	93		REMOVE AND SALVAGE
7	457 X 457 X 457 AWWA C110 TEE FL x PE x FL	1	838 x 435	PE 495 OD	REMOVE AND SALVAGE
8	457 AWWA C110 SPOOL FL x PE	1	230		REMOVE AND SALVAGE
9	457 DEZURIK PLUG VALVE	1	545		REMOVE AND SALVAGE
10	610 x 457 AWWA C110 CONCENTRIC REDUCER FL x FL	1	610		TO REMAIN
11	610 MUELLER GATE VALVE AWWA C300	1	648		TO REMAIN
12	610 CI SPOOL FL x PE	1	413		TO REMAIN
13	610 VIC 44 COUPLING	3			TO REMAIN - RECOAT
14	610 VIC51 PE COUPLING	1		PE OD 655	
15	457 VIC 51 PE COUPLING	1		PE 495 OD	
16	75 NIPPLE & GATE VALVE	1			REMOVE AND SALVAGE
17	75 NIPPLE, ELBOW & GATE VALVE	1			REMOVE AND SALVAGE

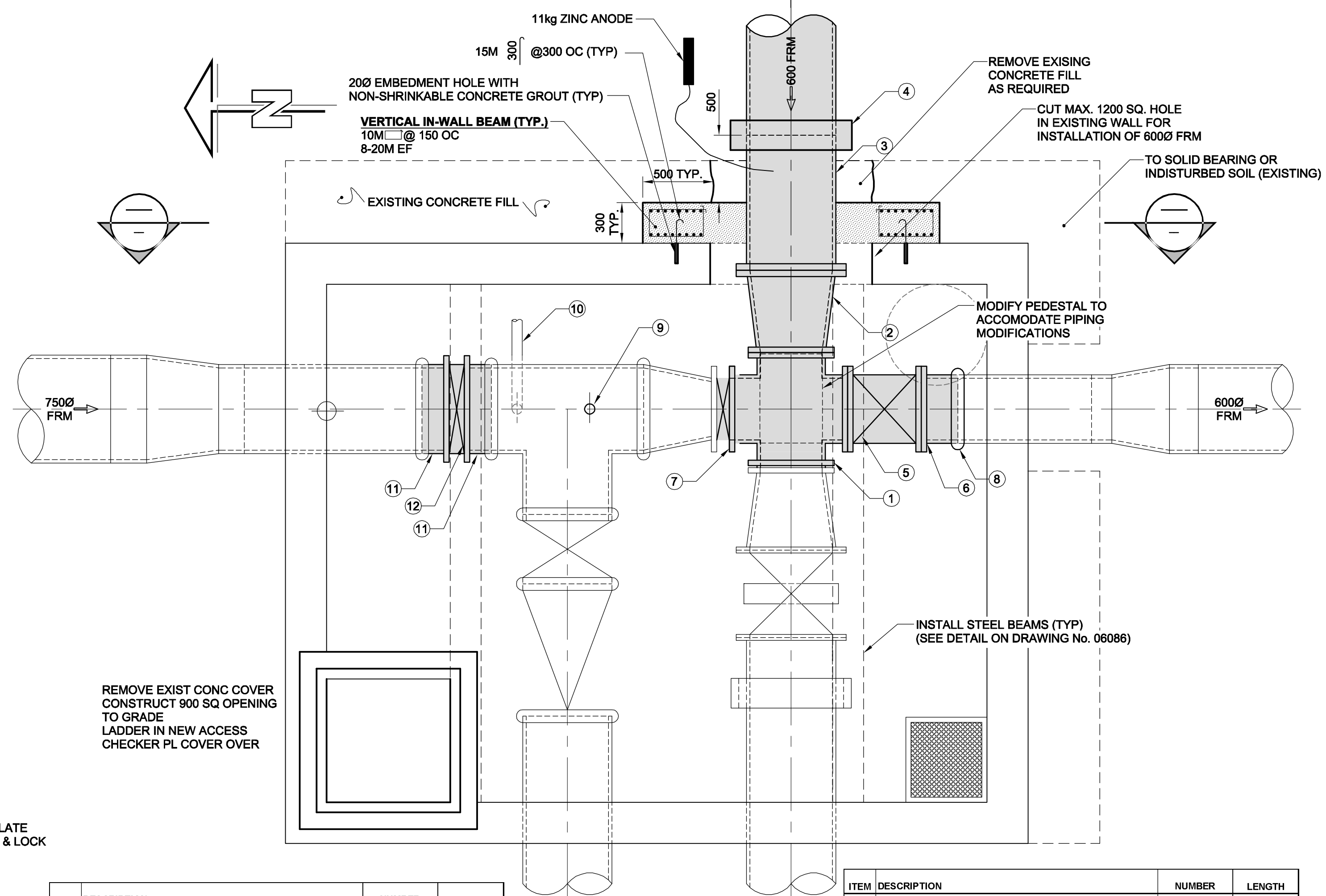
FL = FLANGE
 PE = PLAIN END
 VIC44 = VICTAULIC SHOULDER COUPLING STYLE 44



SECTION

SCALE 1:25
 0 0.25 0.5 0.75 H=1:25
 0 0.25 0.5 0.75 V=1:25

EXISTING VALVE CHAMBER VC2A
 NEW ACCESS HATCH CONSTRUCTION



ITEM	DESCRIPTION	NUMBER	LENGTH
1	457 AWWA C110 CROSS FL x FL x FL x FL	1	838 x 838
2	457 x 610 AWWA C110 TOP TANGENT REDUCER	1	610
3	610 AWWA C110 WALL PIECE FL x PE FOR PVC & PCC PIPE	1	
4	610 AWWA WALL PIECE FL x FL FOR PE PIPE	1	
5	610 SLEEVE COUPLER FOR PVC & PCC PIPE	1	
6	610 FLANGED CONNECTION FOR PE PIPE	1	
7	457 AWWA C151 GATE VALVE	1	542
8	457 SPOOL PIECE	1	TO SUIT
9	457 WAFFER KNIFE GATE VALVE	1	93
10	610 BOLTED SLEEVE COUPLER	1	

ITEM	DESCRIPTION	NUMBER	LENGTH
9	75 SCHEDULE 80 STEEL NIPPLE (THREADED)	1	
	75 STEEL FLANGE C1125 (THREADED)	1	
	75 CAST BRONZE OR BRASS FLANGE (THREADED)	1	
	75 CAST BRONZE OR BRASS NIPPLE (THREADED)	1	
	75 CAST BRONZE BALL VALVE (THREADED)	1	
10	75 SCHEDULE 80 STEEL NIPPLE (THREADED)	1	
	75 SCHEDULE 80 STEEL 90 ELBOW (THREADED)	1	
	75 SCHEDULE 80 STEEL NIPPLE (THREADED)	1	
	75 STEEL FLANGE C1125 (THREADED) w/ ISOLATION KIT	1	
	75 CAST BRONZE OR BRASS FLANGE (THREADED)	1	
	75 CAST BRONZE OR BRASS NIPPLE (THREADED)	1	
	75 BRONZE BALL VALVE (THREADED)	1	
11	600 SPOOL FL x VIC44	2	
	600 WAFFER KNIFE GATE VALVE, C/W OFFSET MANUAL	1	
12	ACTUATOR	1	

NOTE: REMAINDER OF REINFORCING WALL STEEL NOT SHOWN FOR CLARITY

VALVE CHAMBER VC2A STRUCTURAL AND PIPING MODIFICATIONS

SCALE 1:25
 0 0.25 0.5 0.75 m

LOCATION APPROVED UNDERGROUND STRUCTURES

SUPR. U/G STRUCTURES COMMITTEE DATE
 NOTE: LOCATION OF UNDERGROUND STRUCTURES AS SHOWN ARE BASED ON THE BEST INFORMATION AVAILABLE. BUT NO GUARANTEE IS GIVEN THAT ALL EXISTING UTILITIES ARE SHOWN OR THAT THE GIVEN LOCATIONS ARE EXACT. CONFIRMATION OF EXISTENCE AND EXACT LOCATION OF ALL SERVICES MUST BE OBTAINED FROM THE INDIVIDUAL UTILITIES BEFORE PROCEEDING WITH CONSTRUCTION.

NO.	ISSUED FOR CONSTRUCTION	DATE	BY
0	ISSUED FOR CONSTRUCTION	07/07/06	KMB
	REVISIONS	YYMMDD	BY

DESIGNED BY	CHECKED BY	APPROVED BY	RELEASED FOR CONSTRUCTION
EDT / GEB	SBB / MGM	CCM	C. Carroll
DRAWN BY	ADL		
HOR. SCALE	AS NOTED		
VERT. SCALE	N/A		
DATE	2007/07/06	DATE	July 6/07

APEGM
 Certificate of Authorization
 UMA Engineering Ltd. (MB)
 No. 256 Date: July 6, 2007

THE CITY OF WINNIPEG WATER AND WASTE DEPARTMENT
PERIMETER ROAD PUMPING STATION UPGRADES CONTRACT A
FORCEMAIN TWINNING
 VALVE CHAMBER - VC2A SECTIONS AND DETAILS

SHEET 5 OF 8
 CITY DRAWING NUMBER 06085
 REV 0

PROFESSIONAL'S SEAL
 ORIGINAL SEALED BY: E.D.J. TOUPIN July 6, 2007
 CONSULTANT DRAWING NO. 05 D265-202-01

BID OPPORTUNITY NO. 481-2007