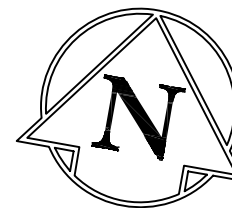


PORTAGE

AVE.



0.61 S.

TRAFFIC SIGNAL POLE TO BE RELOCATED BY OTHERS

PLANING OF PAVEMENT

CONSTRUCT PAVEMENT WIDENING

ADJUST EXISTING MANHOLE

REMOVE EXISTING GUTTER INLET

ADJUST EXISTING CATCH BASIN

INSTALL NEW CATCH PIT AS PER SD-023

RENEW EXISTING SIDEWALK

CONSTRUCT NEW 100 mm CONCRETE SIDEWALK

R 18.0-9.0-18.0  
0.50 OFFSET

BEDSON ST.

- CONSTRUCTION NOTES**
- 1) CURB REPLACEMENT AS DIRECTED BY THE CONTRACT ADMINISTRATOR
  - 2) ALL STREET RADIUS CURB UNDER 15M RADIUS SHALL BE REPLACED AS MODIFIED OR AS DIRECTED BY THE CONTRACT ADMINISTRATOR
  - 3) PAVEMENT REPAIRS SHOWN ARE ONLY A REPRESENTATIVE SAMPLE OF THE TENDERED QUANTITIES
  - 4) ASPHALT TIE-INS TO BE DETERMINED IN THE FIELD BY THE CONTRACT ADMINISTRATOR.
  - 5) SIDEWALK REPLACEMENT AS DIRECTED BY THE CONTRACT ADMINISTRATOR.
  - 6) BOULEVARD REPLACEMENT AS DIRECTED BY THE CONTRACT ADMINISTRATOR.

**WARNING**

IF POWER EQUIPMENT OR EXPLOSIVES ARE TO BE USED FOR EXCAVATION ON THIS PROJECT THE CONTRACTOR MUST:

- 1) OBTAIN CLEARANCE FROM THE GAS UTILITY PRIOR TO EXCAVATION.
- 2) TAKE PRECAUTION TO AVOID DAMAGE TO GAS UTILITY INSTALLATIONS.

SEE PROVINCIAL REGULATION 210/72 FOR DETAILS

METRIC  
WHOLE NUMBERS INDICATE MILLIMETRES  
DECIMALIZED NUMBERS INDICATE METRES

BID OPPORTUNITY NO. 491-2007

150 WM	WATERMAIN	150 WM	HYDRO	150 WM	WATERMAIN	150 WM	WATERMAIN	150 WM	WATERMAIN
300 LDS	LAND DRAINAGE SEWER	300 LDS	CONCRETE	300 LDS	SEWER	300 LDS	SEWER	300 LDS	SEWER
250 CS	COMBINED SEWER	250 CS	LIMIT OF ASPHALT	250 CS	SEWER	250 CS	SEWER	250 CS	SEWER
MANHOLE	MANHOLE	MANHOLE	CURB RENEWAL	MANHOLE	SEWER	MANHOLE	SEWER	MANHOLE	SEWER
CATCH BASIN	CATCH BASIN	CATCH BASIN	ASPHALT	CATCH BASIN	SEWER	CATCH BASIN	SEWER	CATCH BASIN	SEWER
CURB INLET	CURB INLET	CURB INLET	ELEVATIONS	CURB INLET	SEWER	CURB INLET	SEWER	CURB INLET	SEWER
WOOD POLES	WOOD POLES	WOOD POLES	PROPERTY LINE	WOOD POLES	SEWER	WOOD POLES	SEWER	WOOD POLES	SEWER
LAMP STANDARD	LAMP STANDARD	LAMP STANDARD	SURVEY BAR	LAMP STANDARD	SEWER	LAMP STANDARD	SEWER	LAMP STANDARD	SEWER
GAS	GAS	GAS	CURB STOP	GAS	SEWER	GAS	SEWER	GAS	SEWER
EXISTING	LEGEND - PLAN	PROPOSED	RAMP CURB	EXISTING	LEGEND - PROFILE	PROPOSED	EXISTING	LEGEND - PROFILE	PROPOSED

LOCATION APPROVED  
UNDERGROUND STRUCTURES

SUPR. U/G STRUCTURES DATE COMMITTEE

NOTE:  
LOCATION OF UNDERGROUND STRUCTURES AS SHOWN ARE BASED ON THE BEST INFORMATION AVAILABLE. BUT NO GUARANTEE IS GIVEN THAT ALL EXISTING UTILITIES ARE SHOWN OR THAT THE GIVEN LOCATIONS ARE EXACT. CONFIRMATION OF EXISTENCE AND EXACT LOCATION OF ALL SERVICES MUST BE OBTAINED FROM THE INDIVIDUAL UTILITIES BEFORE PROCEEDING WITH CONSTRUCTION.

NO.	REVISIONS	DATE	BY

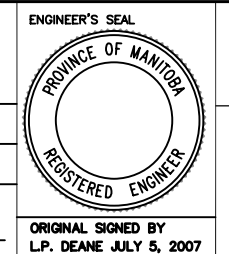
TRANSPORTATION ENGINEERING DIVISION  
TECHNOLOGY SERVICES BRANCH  
106 - 1155 PACIFIC AVE

DESIGNED BY D.B.T. / G.C. CHECKED BY D.K.

DRAWN BY D.B.T. / G.C. APPROVED BY K.T.

SCALE: 1 : 250

DATE 2007/05/11



**THE CITY OF WINNIPEG**  
PUBLIC WORKS DEPARTMENT

Winnipeg

BEDSON STREET AT PORTAGE AVENUE

INTERSECTION ROADWAY IMPROVEMENTS

CITY DRAWING NUMBER SE-07-38  
SHEET 1 OF 1

1