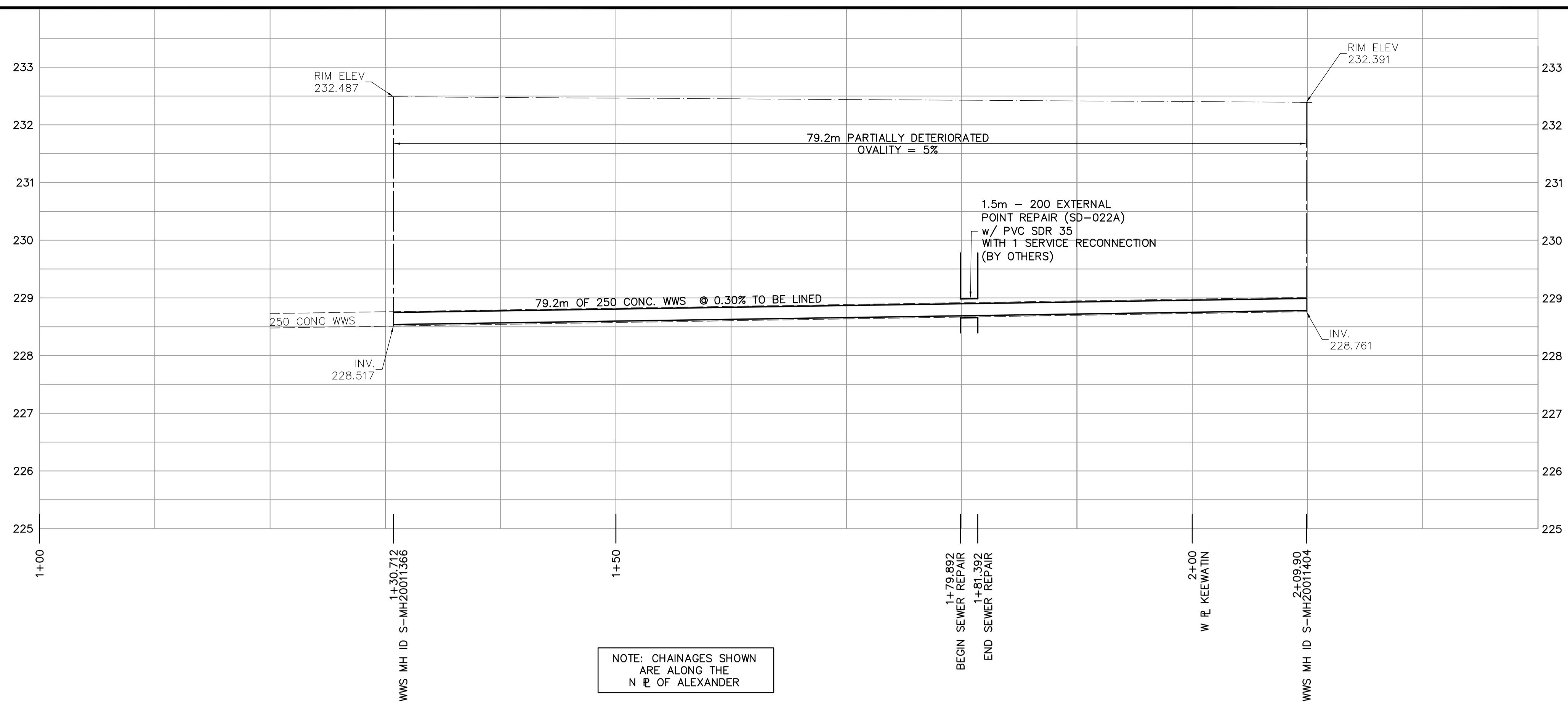
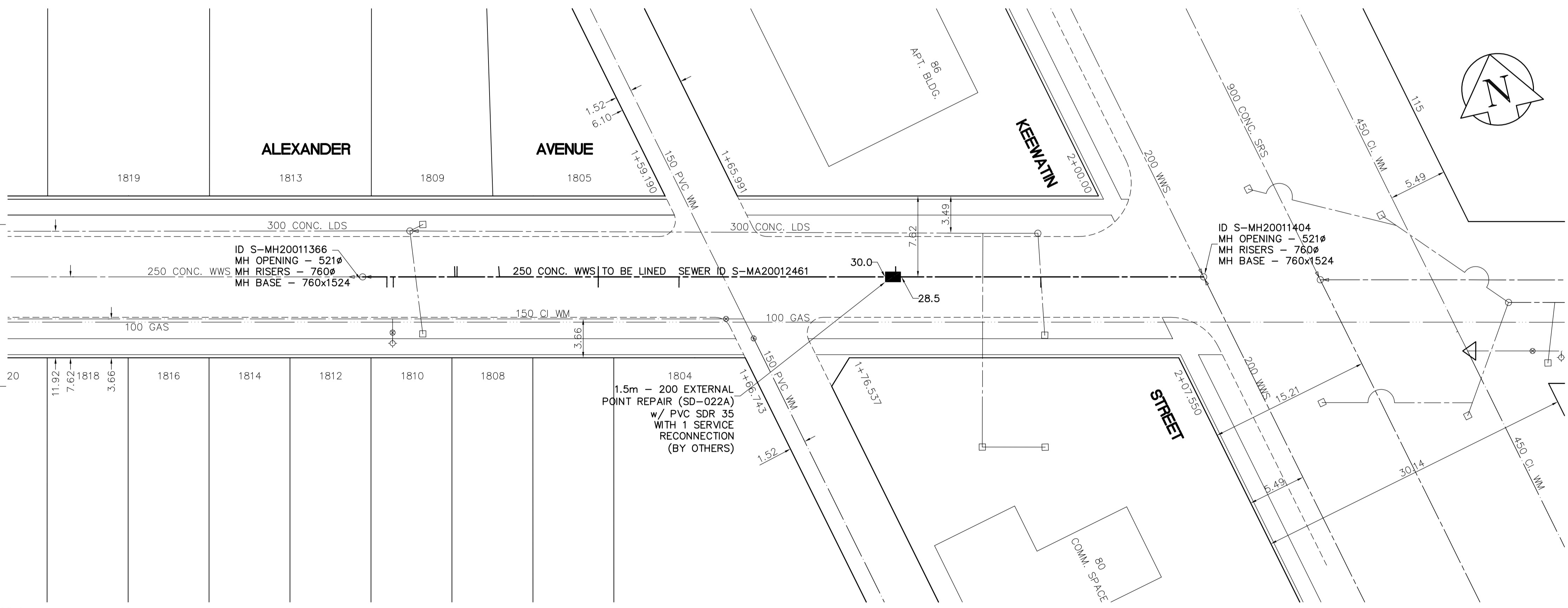


SHEET: COW-WW-A1 (11/2002)  
 FILE NAME: L:\Users\1999000\9994\3206-CAD\UID\Comm\9994-COW-ALEXANDER.rvt  
 PLOTTED BY: ead/etms  
 LAYOUT NAME: C-04 D-0004  
 JUN 20, 2007 - 11:25am



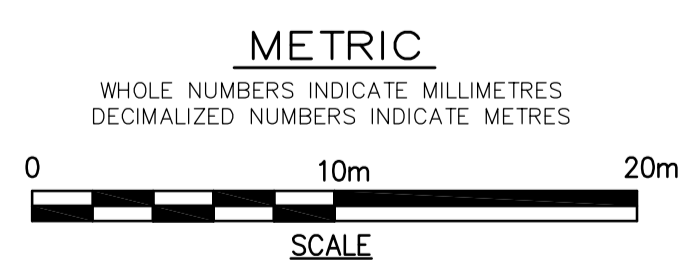
NOTE: CHAINAGES SHOWN ARE ALONG THE N E OF ALEXANDER

SEWER JUNCTION INFORMATION FROM VIDEO INSPECTION S-MA20012461	
DISTANCE FROM S-MH2001404	
3.1m WEST	100mm CONNECTION SOUTH
16.3m WEST	100mm INTRUDING CONNECTION SOUTH
16.3m WEST	150mm CONNECTION SOUTH - CB LEAD/CONNECTION TO LDS
29.0m WEST	225mm CONNECTION NORTH - DEFECTIVE CONNECTION
49.4m WEST	100mm CONNECTION SOUTH
57.0m WEST	150mm CONNECTION NORTH - DEFECTIVE CONNECTION
57.0m WEST	100mm CONNECTION SOUTH
66.3m WEST	100mm CONNECTION NORTH
70.3m WEST	150mm CONNECTION NORTH
70.5m WEST	100mm INTRUDING CONNECTION
76.3m WEST	100mm CONNECTION SOUTH
76.3m WEST	100mm CONNECTION SOUTH



LEGEND  
 52.0 MEASUREMENT TO REPAIR FROM REFERENCE MH SHOWN THUS... 0.0  
 - - - - - TO BE LINED

**APEGM**  
 Certificate of Authorization  
 Earth Tech Canada Inc.  
 No. 730 Expiry: April 30, 2008



EXISTING	LEGEND - PLAN	PROPOSED	EXISTING	LEGEND - PLAN	PROPOSED	EXISTING	LEGEND - PROFILE	PROPOSED
	WATERMAIN			WATERMAIN			WATERMAIN	
	HYDRANT			HYDRO TELEPHONE			WATERMAIN	
	VALVE			CONCRETE			WATERMAIN	
	LAND DRAINAGE SEWER			ASPHALT			LAND DRAINAGE SEWER	
	WASTEWATER SEWER			PROPERTY LINE			WASTE WATER SEWER	
	MANHOLE			SURVEY BAR			PROFILE	
	CATCH BASIN			CURB STOP				
	CURB INLET			TREE				
	JUNCTIONS			ANODE				
	CULVERT			CONCRETE SIDEWALK				
	GAS			FENCE				

LOCATION APPROVED UNDERGROUND STRUCTURES  
 SUPV. U/G STRUCTURES DATE COMMITTEE  
 NOTE:  
 LOCATION OF UNDERGROUND STRUCTURES AS SHOWN ARE BASED ON THE BEST INFORMATION AVAILABLE. BUT NO GUARANTEE IS GIVEN THAT ALL EXISTING UTILITIES ARE SHOWN OR THAT THE GIVEN LOCATIONS ARE EXACT. CONFIRMATION OF EXISTENCE AND EXACT LOCATION OF ALL SERVICES MUST BE OBTAINED FROM THE INDIVIDUAL UTILITIES BEFORE PROCEEDING WITH CONSTRUCTION.

NO.	REVISIONS	DATE	BY
B	ISSUED FOR TENDER	2007/07/19	DA
A	ISSUED FOR REVIEW	2007/07/17	PL

**EARTH TECH**  
 A tyco INTERNATIONAL LTD. COMPANY  
 Earth Tech (Canada) Inc. Winnipeg, Manitoba 204-477-5381

DESIGNED BY	PL	CHECKED BY	GSK
DRAWN BY	GDL	APPROVED BY	
HOR. SCALE:	1:250	RELEASED FOR CONSTRUCTION BY:	K. ZUREK
VERTICAL SCALE:	1:50	DATE	2007/04/11
DATE	2007/04/11	DATE	2007/07/19

ENGINEER'S SEAL  
 PROVINCE OF MANITOBA  
 ORIGINAL SIGNED BY  
**K.W. FITCHETT**  
 2007/07/19  
 REGISTERED PROFESSIONAL ENGINEER  
 CONSULTANT DRAWING NO. 99943-C01

**THE CITY OF WINNIPEG**  
 Winnipeg WATER AND WASTE DEPARTMENT

**2007 SEWER RENEWALS BY CIPP LINING**

ALEXANDER AVENUE  
 M.H. AT KEEWATIN STREET TO 1ST  
 M.H. W OF KEEWATIN STREET

SHEET OF 12  
 CITY DRAWING NUMBER 06057